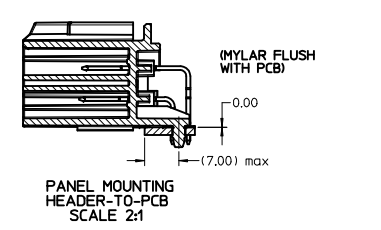
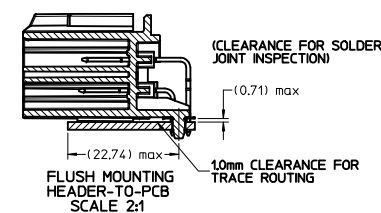
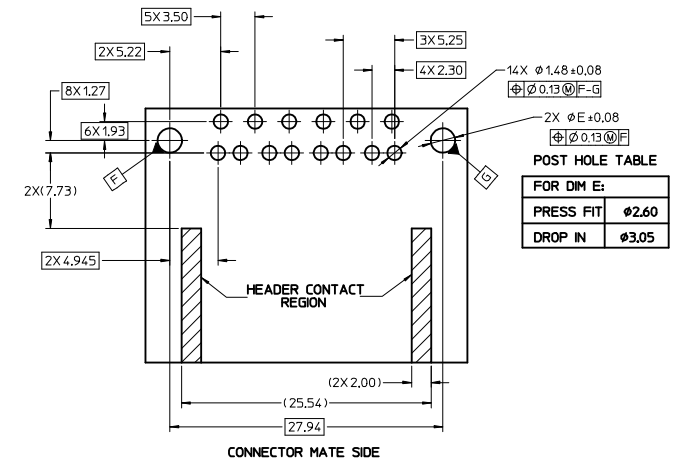


MATERIAL NUMBER			CKT SIZE	DESCRIPTION	POL	COLOR
TUBE PACK	TRAY PACK	ALT TRAY				
34696-9100	34696-0100	TBD	10	POWER STAC RIGHT ANGLE HEADER ASSEMBLY	A	BLACK
34696-9101	34696-0101	34696-9104	10	POWER STAC RIGHT ANGLE HEADER ASSEMBLY	B	GREY
34696-9102	34696-0102	TBD	10	POWER STAC RIGHT ANGLE HEADER ASSEMBLY	C	BROWN



- NOTES: VALID UNLESS OTHERWISE SPECIFIED  
1. GENERAL:
- CONNECTOR HEADER MUST BE VALIDATED TO THE FOLLOWING FUNCTIONAL REQUIREMENTS:  
PIN RETENTION - USCAR-2 REV 4  
SOLDERABILITY - SMES-152
  - APPLICATION REQUIREMENTS (REFERENCE ONLY) FOR:  
SEE APPLICATION SPECIFICATION - AS-34690-000  
SEE PRODUCT SPECIFICATION - PS-31372-100  
MATES WITH: SD-31372-900
  - PACKAGING SPECIFICATION PER MOLEX DRAWING PK-31300-892 (TRAY)
  - PACKAGING SPECIFICATION PER MOLEX DRAWING PK-31301-063 (TUBE)
  - PACKAGING SPECIFICATION PER MOLEX DRAWING PK-31300-894 (ALT TRAY)
2. DESIGN: MATERIALS:
- SHROUD (PLASTIC HOUSING):  
RESIN - SPS 30%GF
  - 150mm BLADES:  
BASE MATERIAL: C19400  
PLATING TYPE: AS NOTED
  - 2.80mm BLADES:  
BASE MATERIAL: C19400  
PLATING TYPE: AS NOTED
3. PLATING REQUIREMENTS:
- UNDERPLATING - OVERALL NICKEL
  - OVERPLATING - OVERALL TIN

### RECOMMENDED PCB LAYOUT



<b>ADDED POL C</b> ELEC NO: UAU2016-1356 DRAWN: FISCHER01 2016/03/09 CHKD: APPR: RBAUMAN DATE: 2016/03/10	QUALITY SYMBOLS ▽=0 ▽=0	GENERAL TOLERANCES (UNLESS SPECIFIED) <table border="1"> <thead> <tr> <th></th> <th>mm</th> <th>INCH</th> </tr> </thead> <tbody> <tr> <td>4 PLACES</td> <td>±.005</td> <td>±.0005</td> </tr> <tr> <td>3 PLACES</td> <td>±.008</td> <td>±.0008</td> </tr> <tr> <td>2 PLACES</td> <td>±.013</td> <td>±.0013</td> </tr> <tr> <td>1 PLACE</td> <td>±.025</td> <td>±.0025</td> </tr> </tbody> </table>		mm	INCH	4 PLACES	±.005	±.0005	3 PLACES	±.008	±.0008	2 PLACES	±.013	±.0013	1 PLACE	±.025	±.0025	DIMENSION STYLE <b>MM ONLY</b>	SCALE <b>4:1</b>	DESIGN UNITS <b>METRIC</b>	THIRD ANGLE PROJECTION
		mm	INCH																		
4 PLACES	±.005	±.0005																			
3 PLACES	±.008	±.0008																			
2 PLACES	±.013	±.0013																			
1 PLACE	±.025	±.0025																			
DRAFT WHERE APPLICABLE MUST REMAIN WITHIN DIMENSIONS	DIMENSION STYLE <b>MM ONLY</b>	DIMENSION STYLE <b>MM ONLY</b>	DIMENSION STYLE <b>MM ONLY</b>	DIMENSION STYLE <b>MM ONLY</b>	DIMENSION STYLE <b>MM ONLY</b>	DIMENSION STYLE <b>MM ONLY</b>															