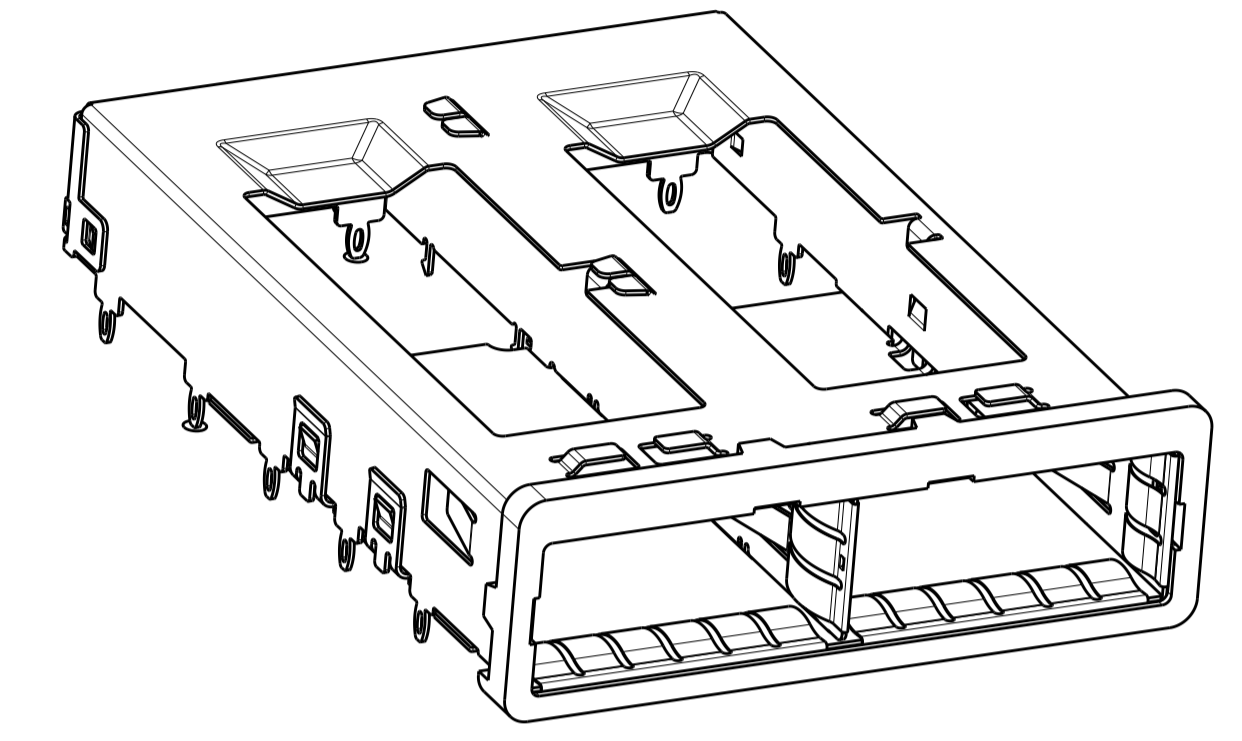
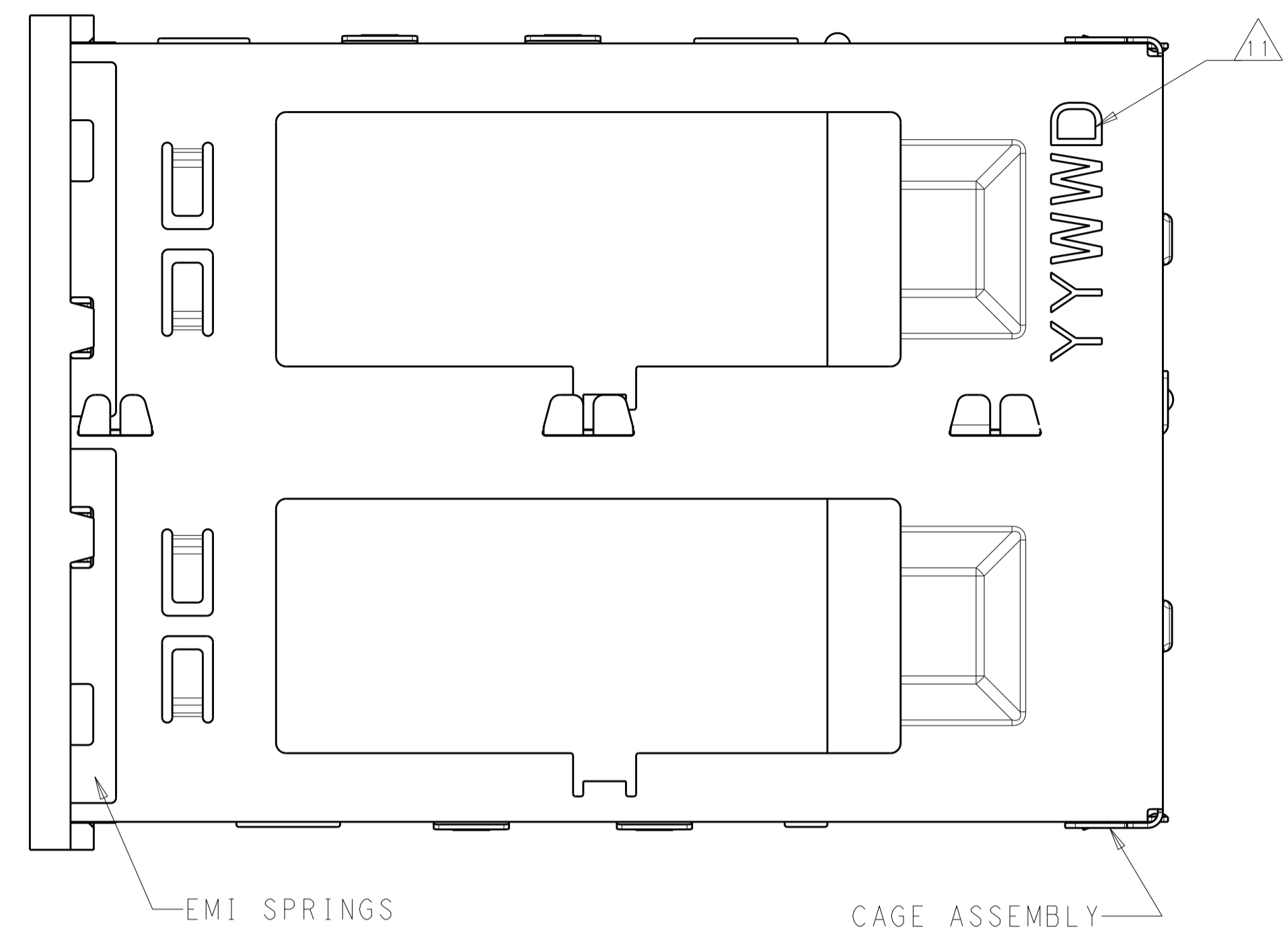
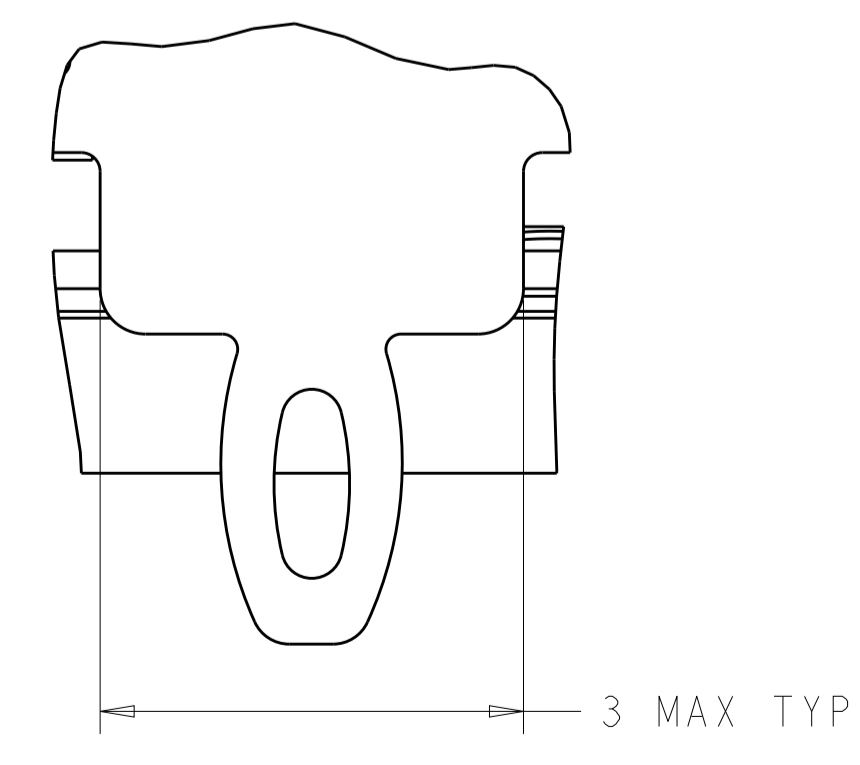
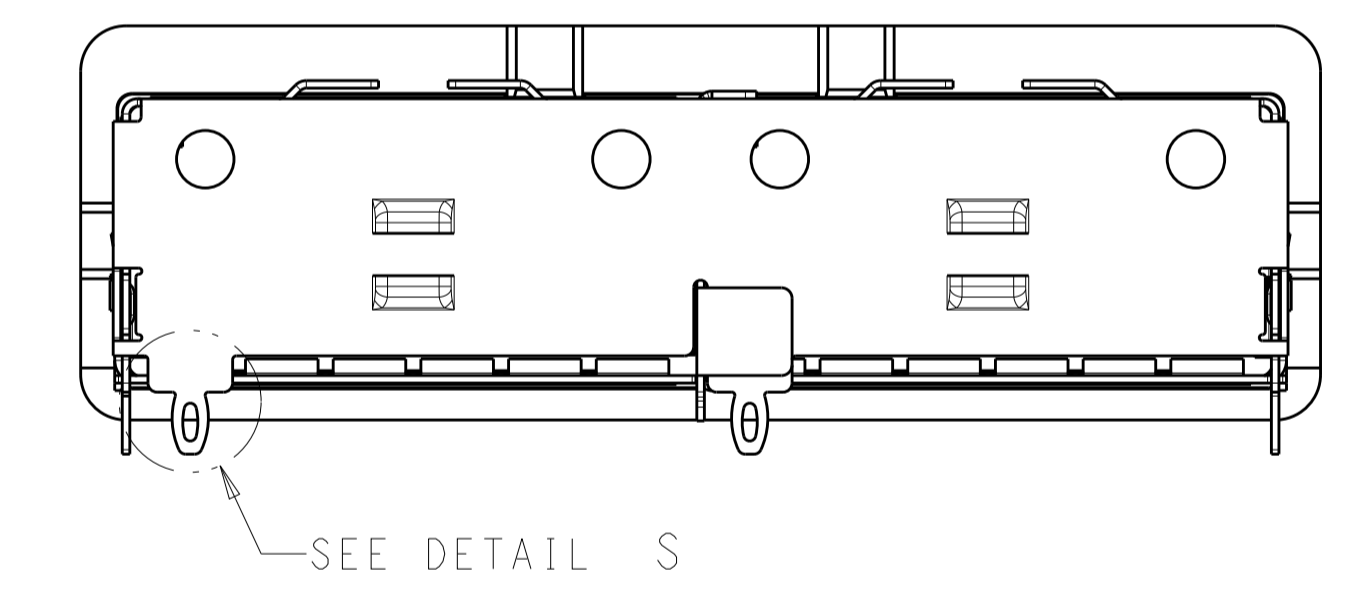
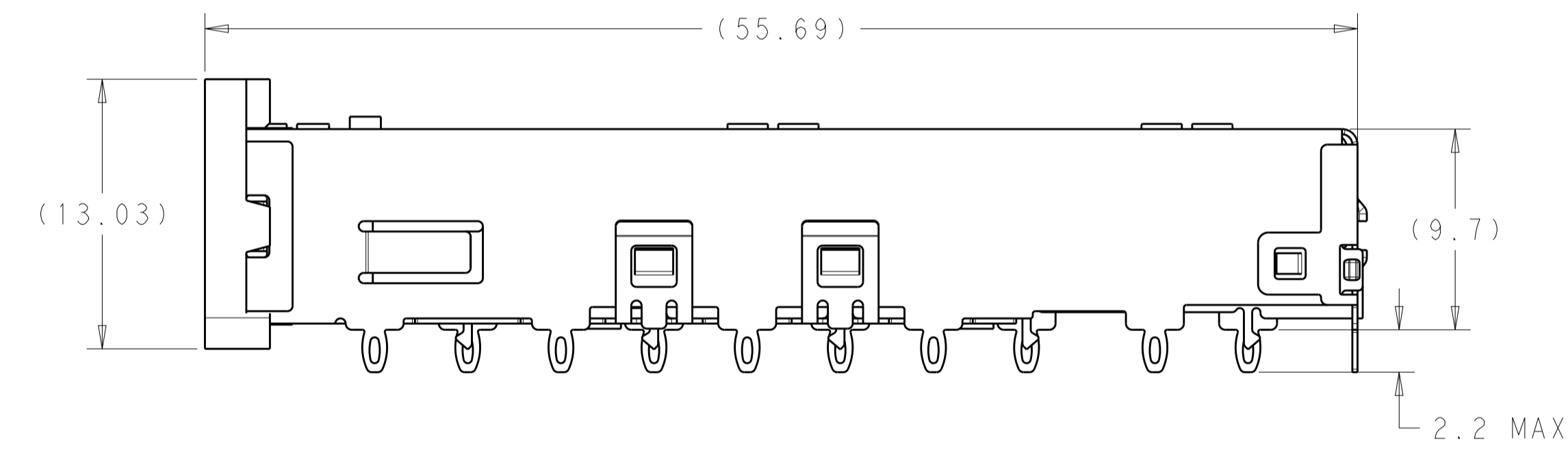
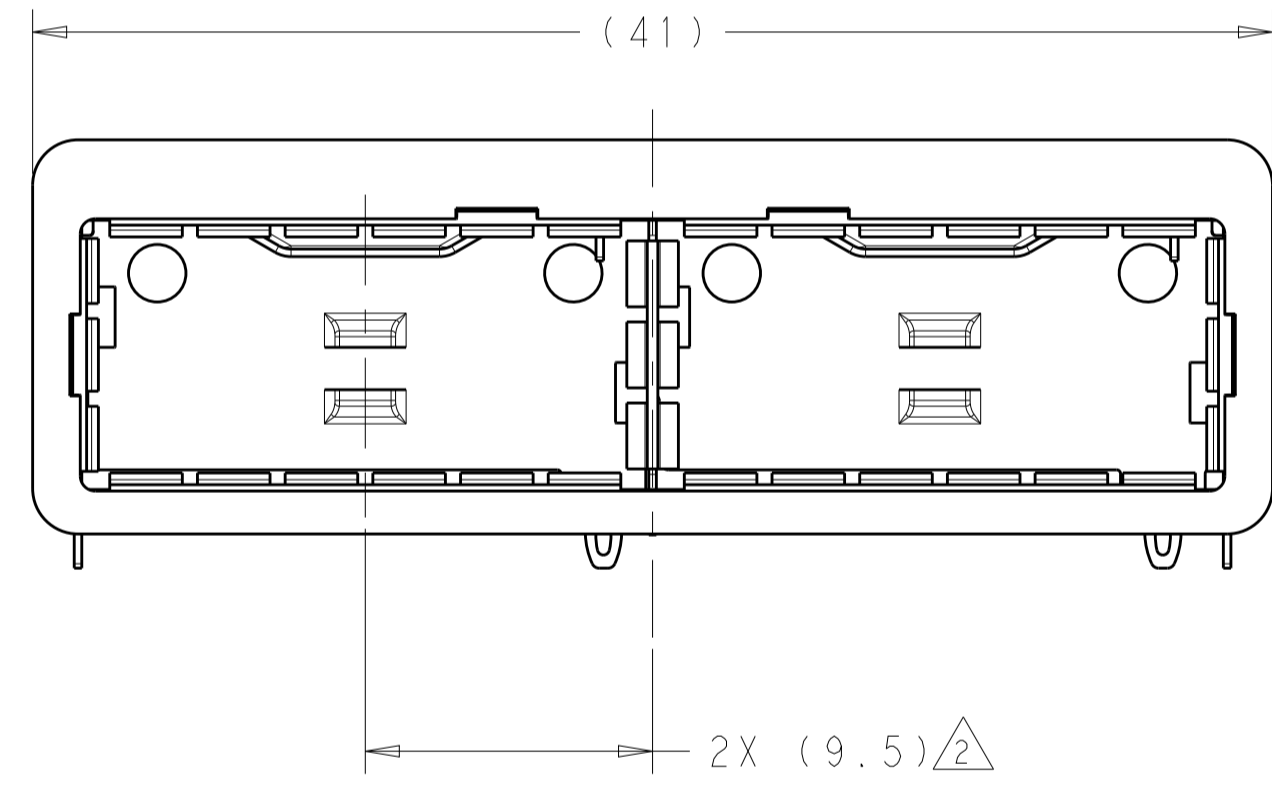


LOC	DIST	REVISIONS			
P	LTN	DESCRIPTION	DATE	DWN	APVD
A		RELEASED ECO-14-003627	11APR2014	LAW	EB
B		REVISED PER ECO-15-012666	07DEC2015	JY	SH
C		REVISED PER ECO-16-002221	18FEB2016	KD	SH

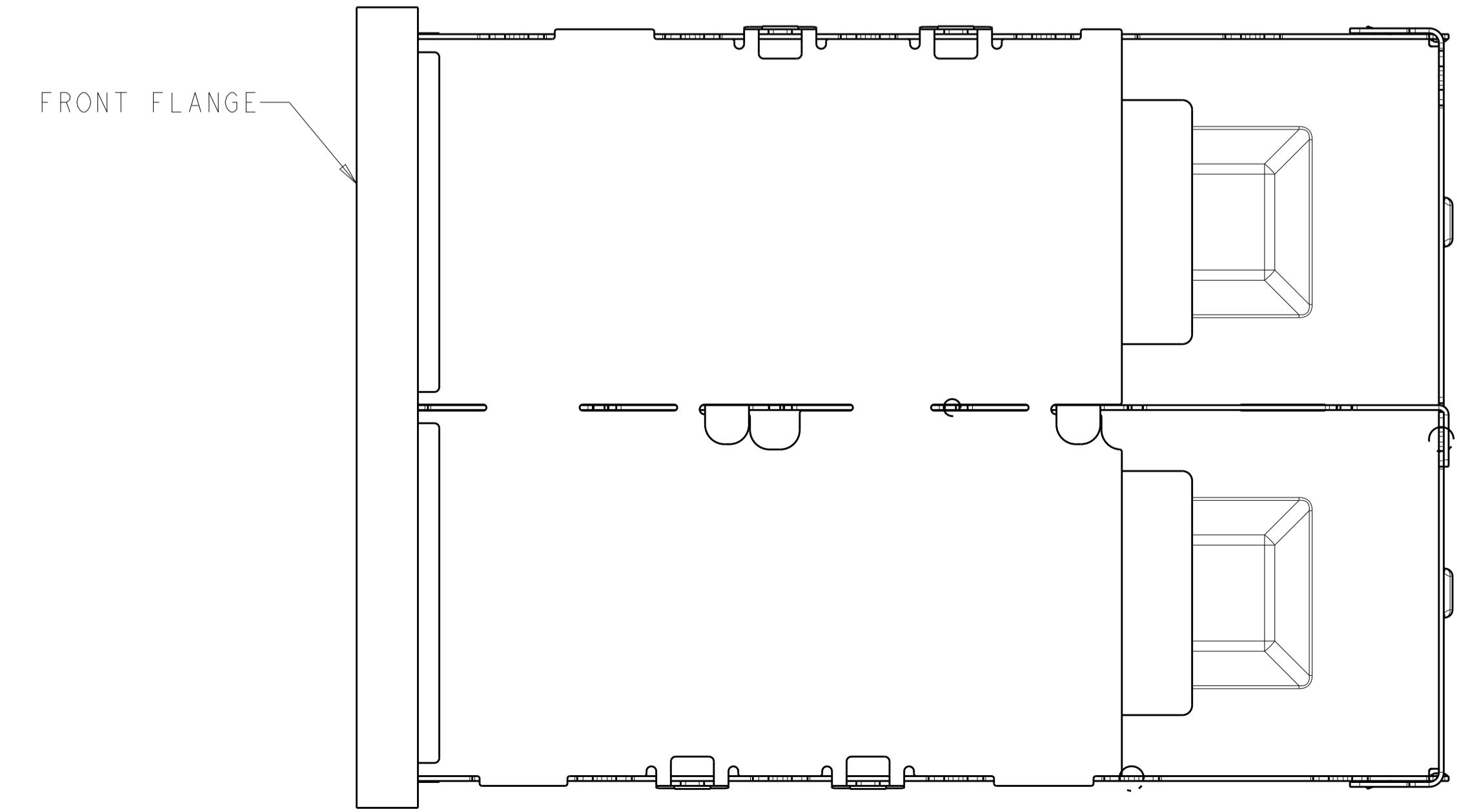
- △ SURFACE TRACES PERMITTED WITHIN THIS AREA EXCEPT WHERE CAGE STANDOFFS, SHOWN IN DETAIL S, CONTACT PC BOARD.
- △ PITCH BETWEEN PORTS OF ONE 1X2 CAGE ASSEMBLY.
- △ SPACING BETWEEN CAGES ON THE SAME PC BOARD, TO BE SPECIFIED BY CUSTOMER, MUST COMPLY WITH MINIMUM DIMENSIONS SHOWN.
- △ REFERENCE APPLICATION SPEC 114-XXXX FOR RECOMMENDED DRILL HOLE DIAMETER AND PLATING THICKNESS.
- △ UNPLATED THRU HOLE.
- △ DATUMS AND BASIC DIMENSIONS ESTABLISHED BY CUSTOMER.
- △ DATUM A IS TOP SURFACE OF PC BOARD.
- △ DIMENSION C IS THE NOMINAL THICKNESS OF CUSTOMER SUPPLIED PC BOARD.
- △ MINIMUM PC BOARD THICKNESS:  
 SINGLE SIDED = 1.45mm  
 DOUBLE SIDED = 2.2mm
- △ MATES WITH QSPF MSA COMPATIBLE TRANSCEIVER.
- △ BASELINE FOR THESE DIMENSIONS IS THE CENTER OF COMPLIANT PIN HOLE.
- △ DATE CODE (YYWWD) MARKED APPROXIMATELY AS SHOWN.
- △ REFERENCE APP SPEC 114-XXXX FOR GASKET THICKNESS CALCULATION.
- △ MATERIAL:  
 CAGE ASSEMBLY: NICKEL SILVER, 0.25 THICK  
 EMI SPRINGS: COPPER ALLOY  
 FRONT FLANGE: ZINC ALLOY
- △ FINISH:  
 EMI SPRINGS: 2µm MINIMUM TIN  
 FRONT FLANGE: 3µm MINIMUM TIN OVER 1.27µm MINIMUM NICKEL OVER 5.08µm MINIMUM COPPER.



ISOMETRIC VIEW  
 SCALE 5:2



DETAIL S  
 SCALE 20:1

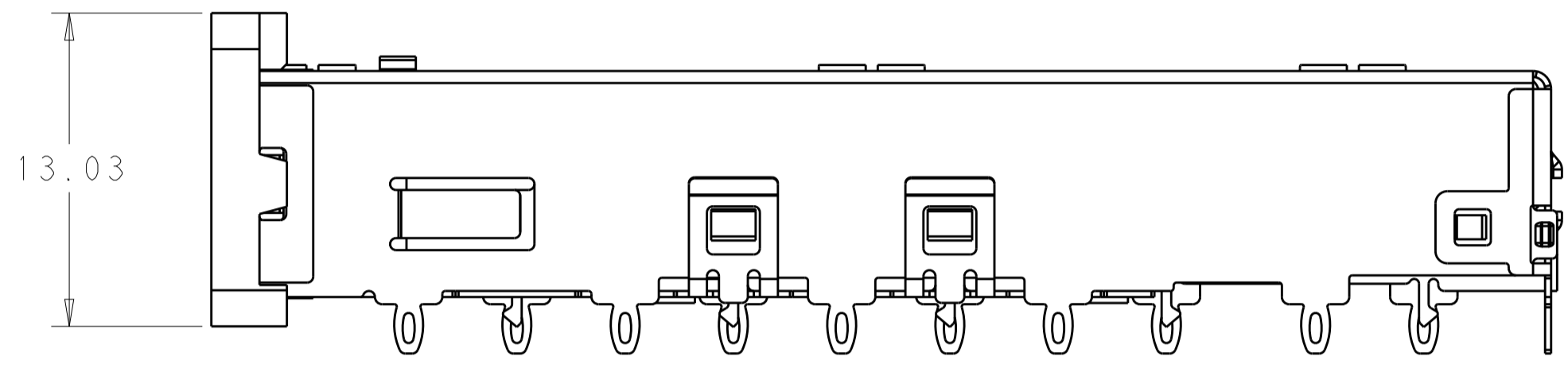


2227104-5
2227104-1
PART NUMBER

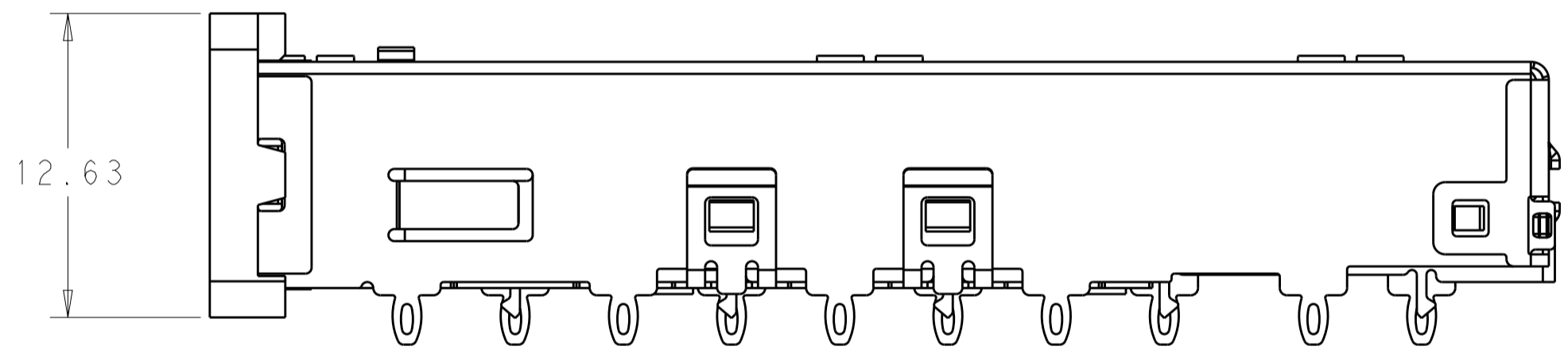
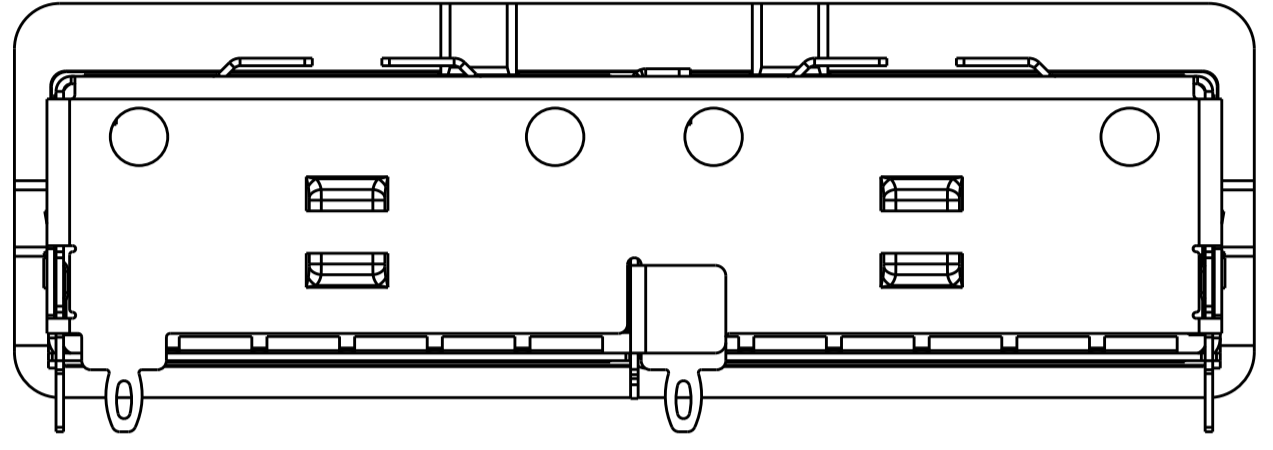
THIS DRAWING IS A CONTROLLED DOCUMENT. DIMENSIONING AND TOLERANCING PER ASME Y14.5M-2009.		DWN: C. VALENTINE 22FEB2013 CHK: E. BRIANT 22FEB2013 APVD: E. BRIANT 22FEB2013	NAME: 1X2 CAGE ASSEMBLY, BEHIND BEZEL, QSPF28	RESTRICTED TO: -
DIMENSIONS: mm	TOLERANCES UNLESS OTHERWISE SPECIFIED:	PRODUCT SPEC: 108-19428	SIZE: A1	Customer Drawing
0 PLC ±0.5	1 PLC ±0.13	APPLICATION SPEC: 114-32023	CAGE CODE: 00779	SCALE: 4:1
2 PLC ±0.13	3 PLC ±0.013	WEIGHT: -	DRAWING NO: 2227104	SHEET 1 OF 5
4 PLC ±0.001	ANGLES ±0.001	FINISH: 1.3, 1.4	REV: C	

THIS DRAWING IS UNPUBLISHED. RELEASED FOR PUBLICATION 20  
 © COPYRIGHT 20 BY - ALL RIGHTS RESERVED.

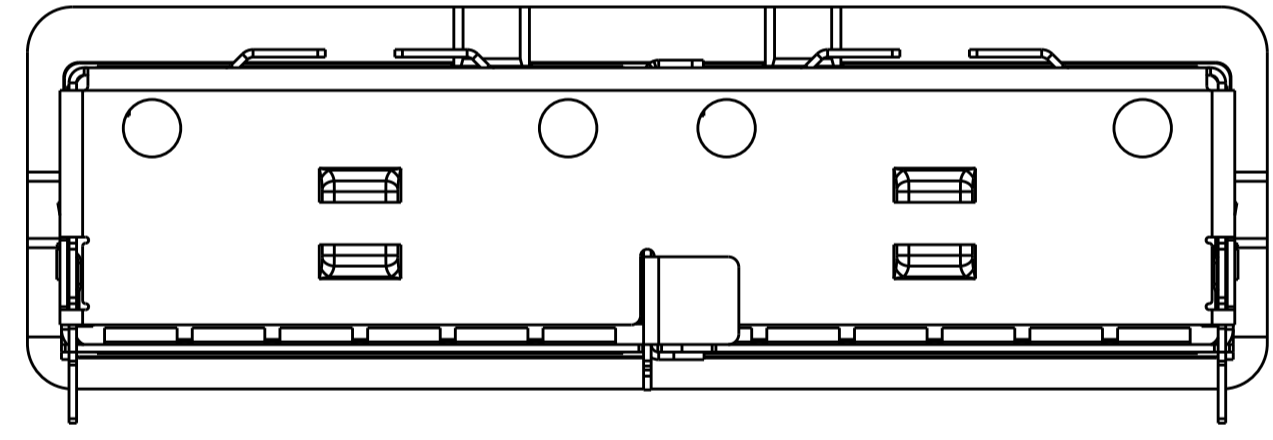
LOC		DIST		REVISIONS			
P	LTN	DESCRIPTION	DATE	DWN	APVD		



2227104-1  
SCALE 4:1



2227104-5  
SCALE 4:1

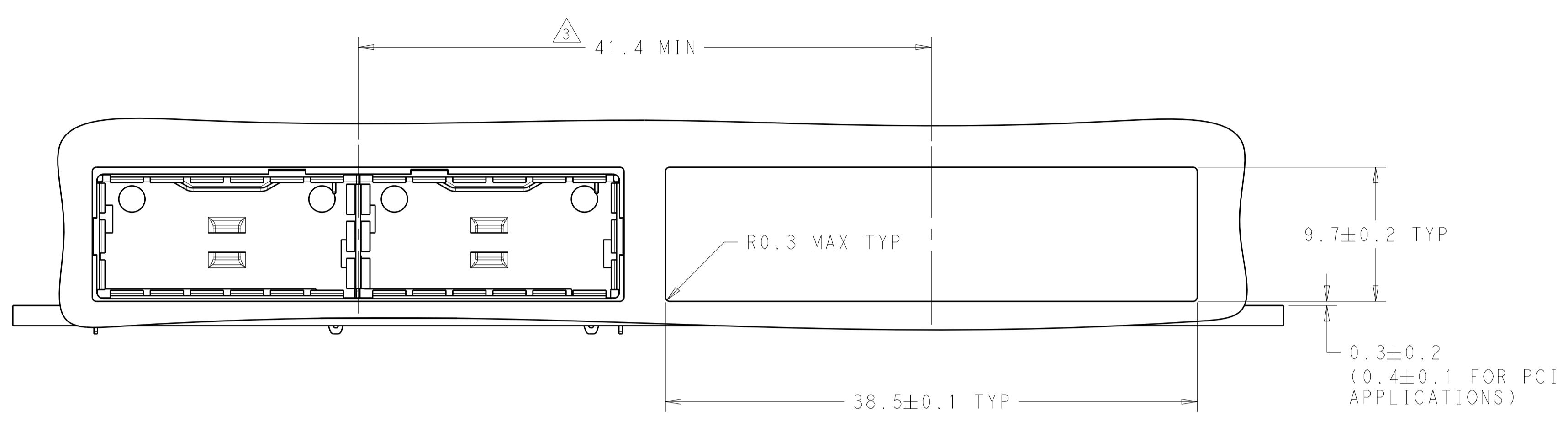


THIS DRAWING IS A CONTROLLED DOCUMENT. DIMENSIONING AND TOLERANCING PER ASME Y14.5M-2009		DWN C. VALENTINE 22FEB2013	TE Connectivity NAME 1X2 CAGE ASSEMBLY, BEHIND BEZEL, QSFP28
DIMENSIONS: mm		CHK E. BRIANT 22FEB2013	
TOLERANCES UNLESS OTHERWISE SPECIFIED:		APVD E. BRIANT 22FEB2013	PRODUCT SPEC 108-19428
0 PLC ±. 1 PLC ±0.5 2 PLC ±0.13 3 PLC ±0.013 4 PLC ±0.001 ANGLES ±.		APPLICATION SPEC 114-32023	SIZE A100779
MATERIAL FINISH		WEIGHT	RESTRICTED TO
		Customer Drawing	SCALE 4:1 SHEET 2 OF 5 REV C

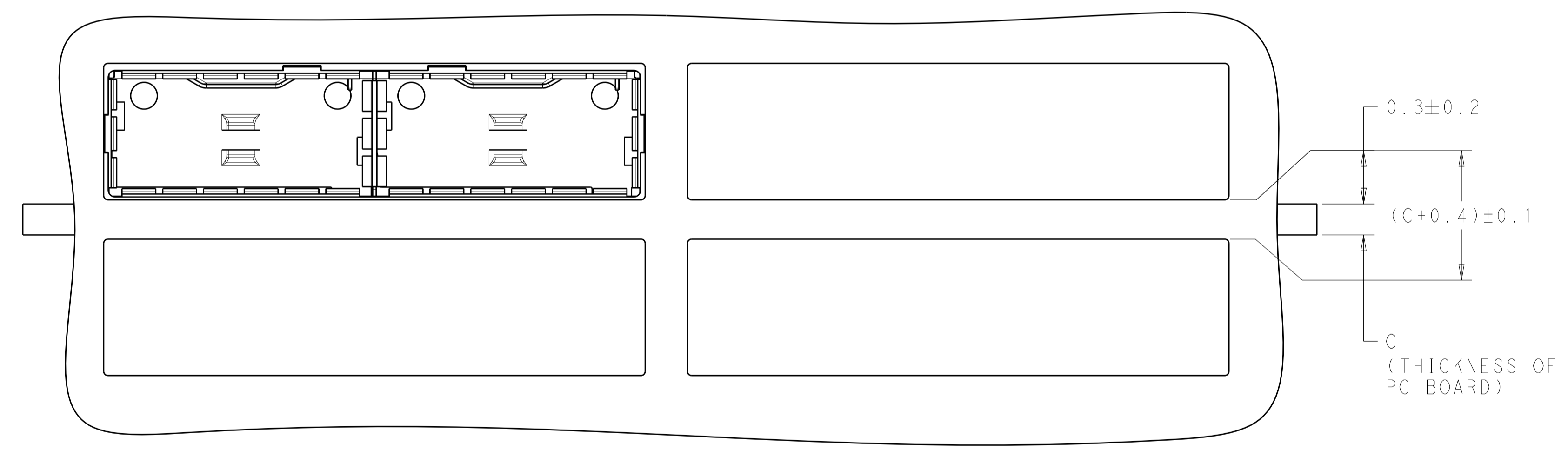
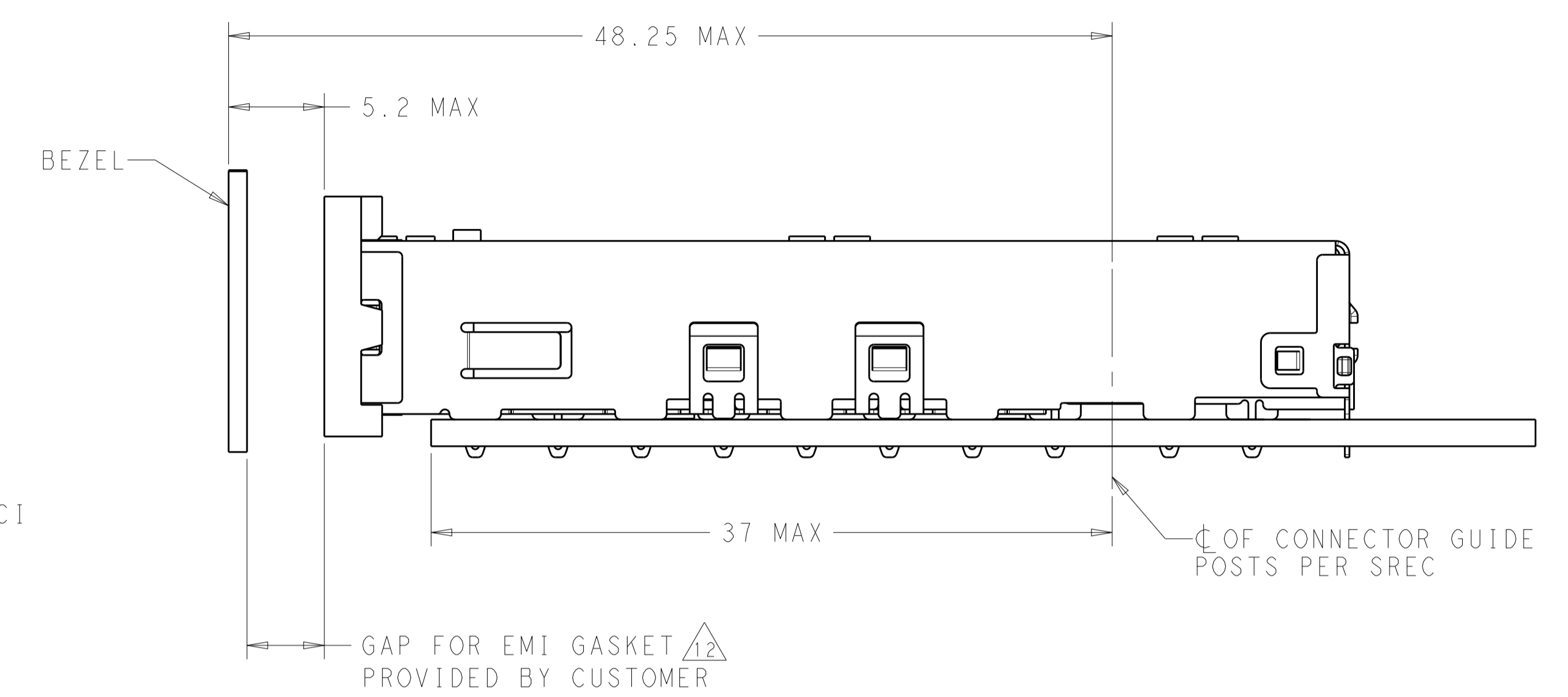
LOC	DIST	REV	DATE	BY	APPD
		1			

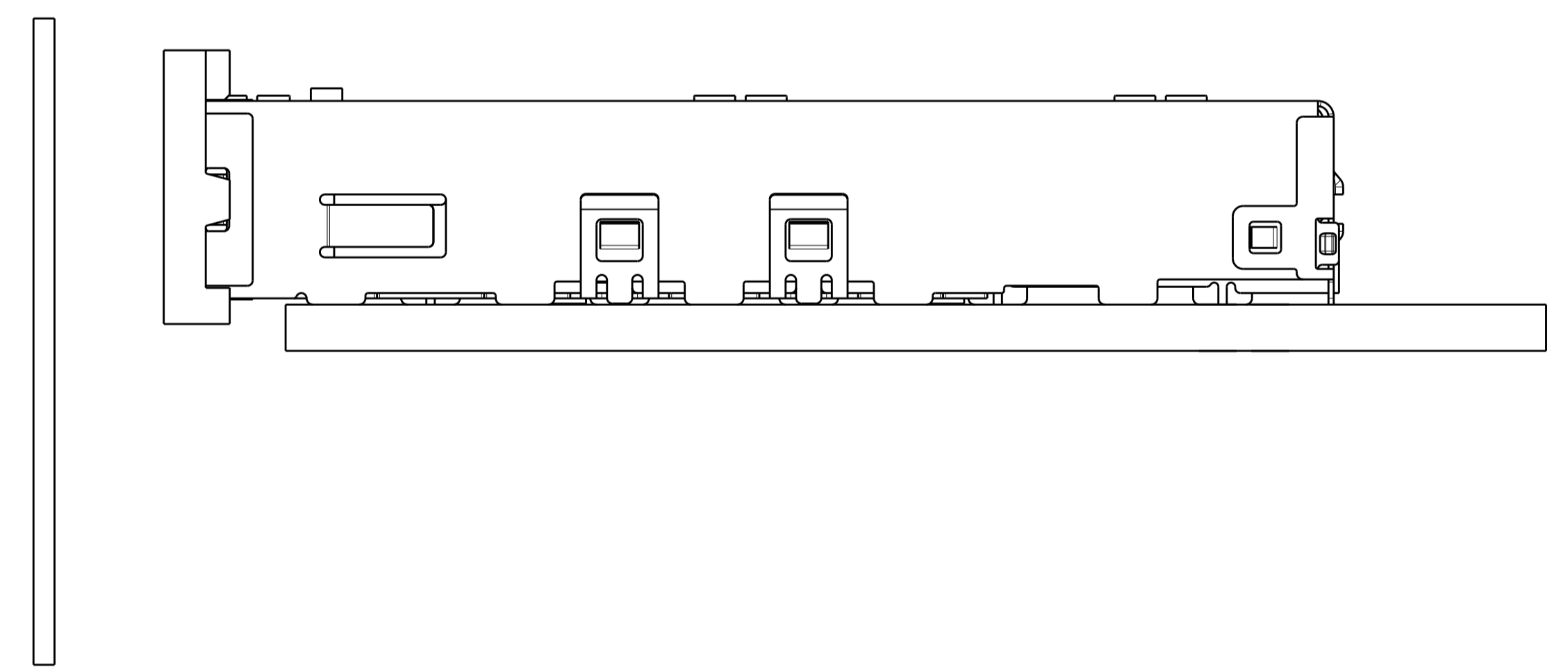
REV	DATE	DESCRIPTION	BY	APPD
1		SEE SHEET 1		



ONE-SIDED CONFIGURATION

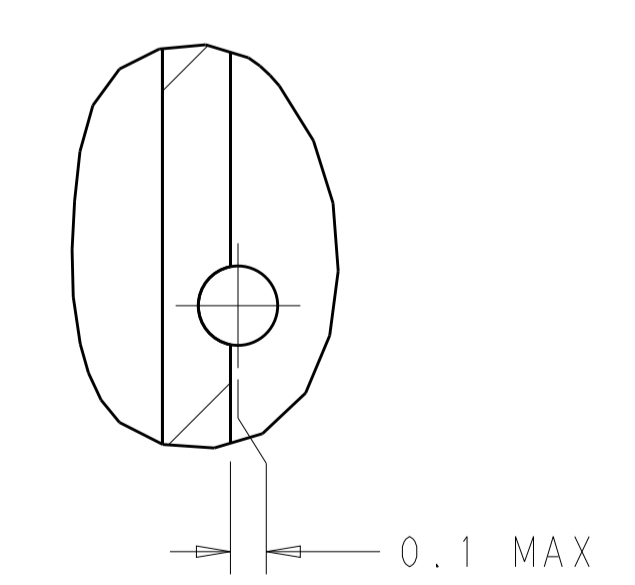
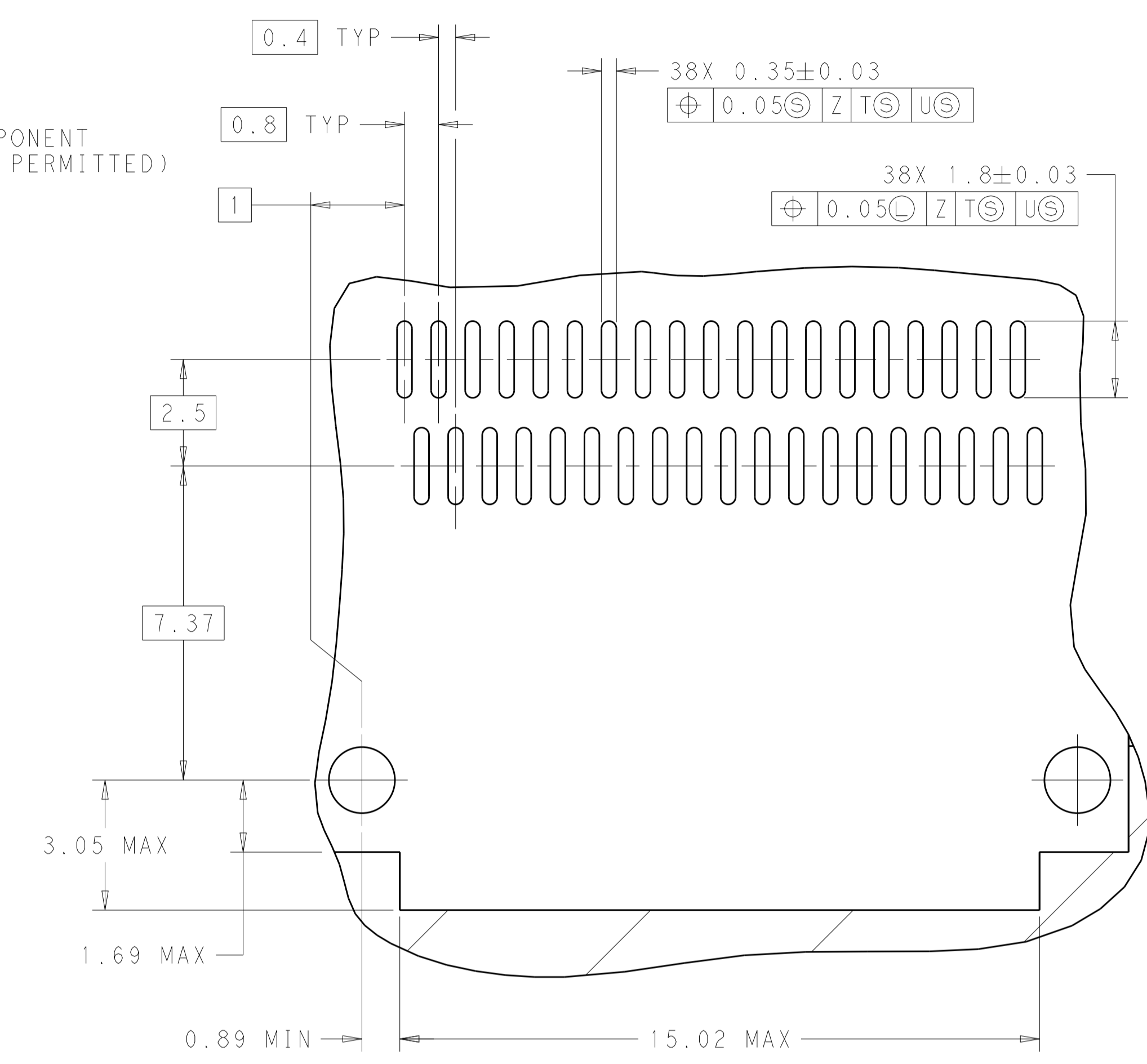
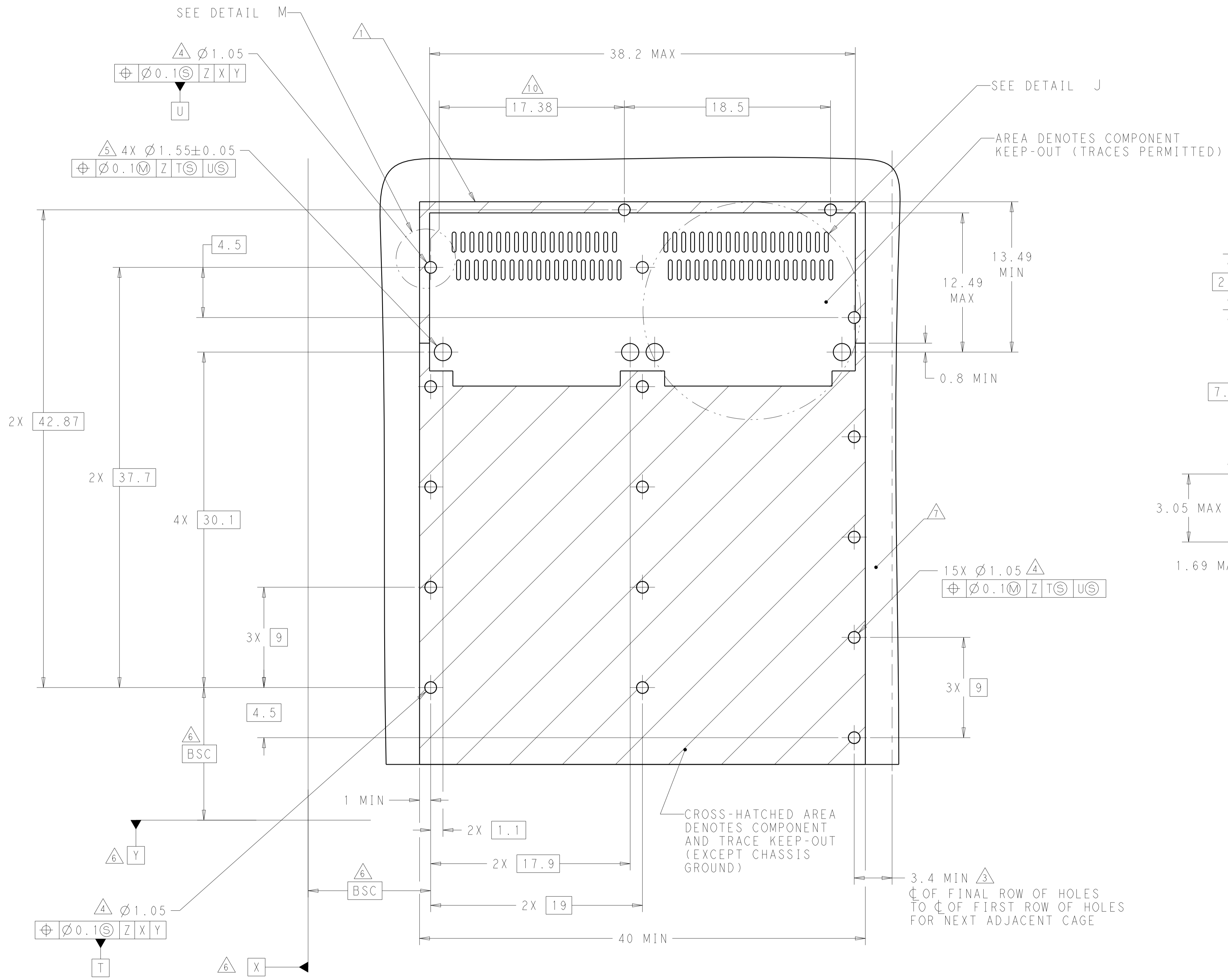


BELLY TO BELLY CONFIGURATION SIMILAR TO ONE SIDED EXCEPT WHERE NOTED



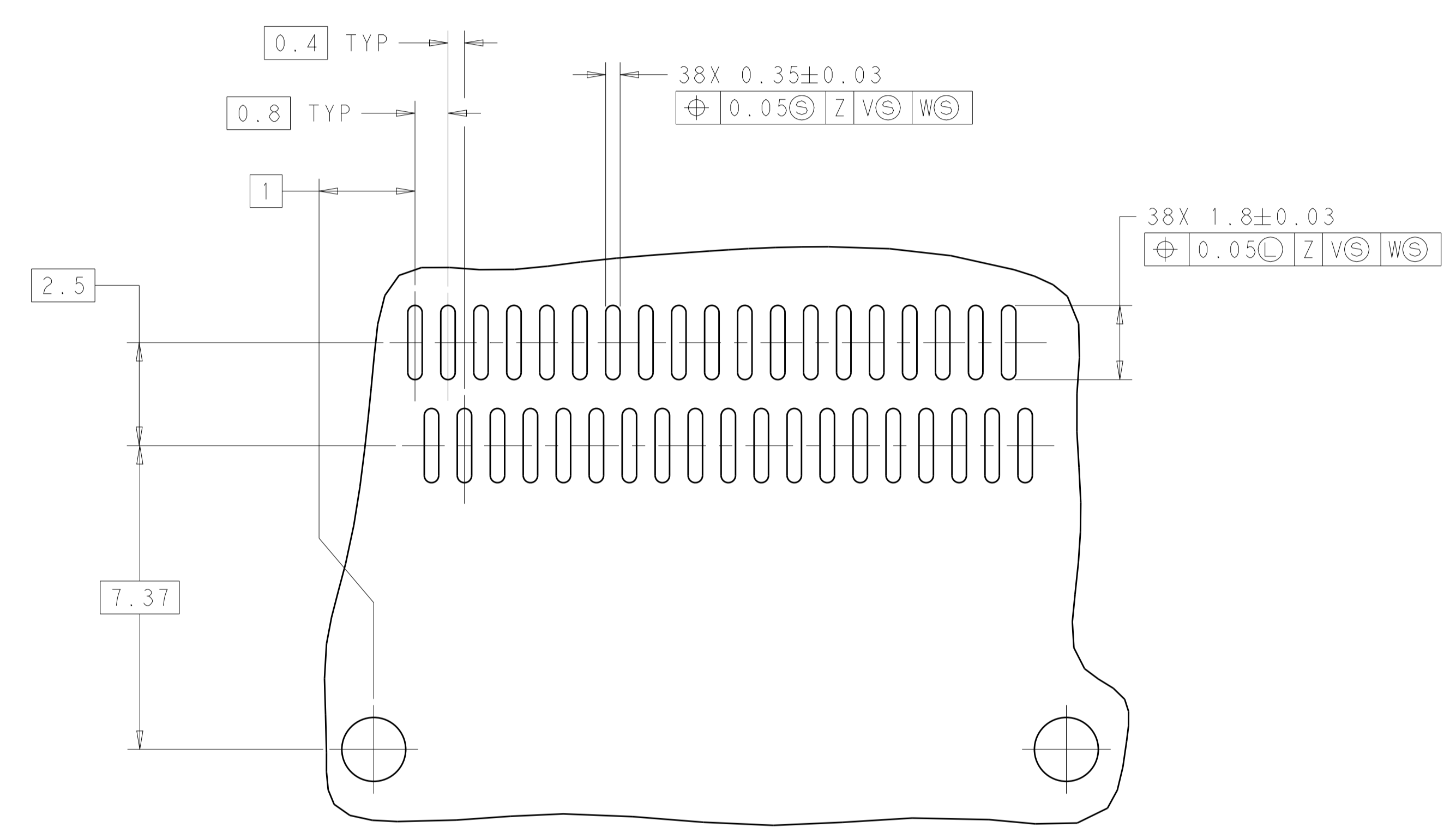
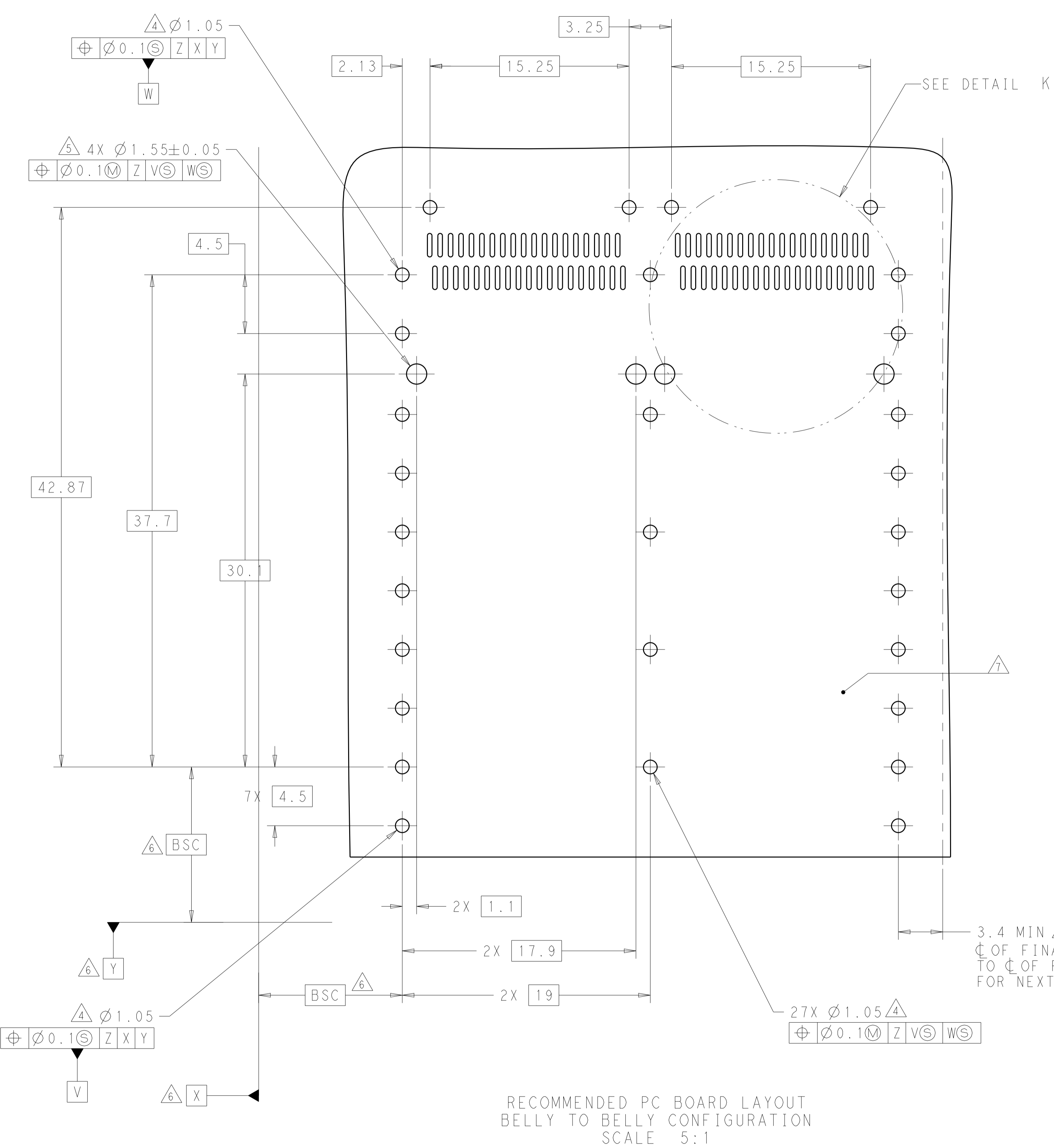
THIS DRAWING IS A CONTROLLED DOCUMENT. DIMENSIONING AND TOLERANCING PER ASME Y14.5M-2009.		DWN: C. VALENTINE 22FEB2013 CHK: E. BRIANT 22FEB2013 APVD: E. BRIANT 22FEB2013	<b>STE</b> TE Connectivity
DIMENSIONS: mm 	TOLERANCES UNLESS OTHERWISE SPECIFIED: 0 PLC ±0.5 1 PLC ±0.13 2 PLC ±0.13 3 PLC ±0.013 4 PLC ±0.001 ANGLES ±0.0001	NAME: 1X2 CAGE ASSEMBLY, BEHIND BEZEL, QSP28 PRODUCT SPEC: 108-19428 APPLICATION SPEC: 114-32023 WEIGHT: -	SIZE: A1 CAGE CODE: 00779 DRAWING NO: C=2227104 RESTRICTED TO: -
MATERIAL:	FINISH:	Customer Drawing	SCALE: 4:1 SHEET 3 OF 5 REV C

LOC	DIST	REVISIONS	DATE	OWN	APVD
		DESCRIPTION			
		SEE SHEET 1			



THIS DRAWING IS A CONTROLLED DOCUMENT. DIMENSIONING AND TOLERANCING PER ASME Y14.5M-2009.		OWN: C. VALENTINE 22FEB2013 CHK: E. BRIANT 22FEB2013 APVD: E. BRIANT 22FEB2013	TE Connectivity	
DIMENSIONS: mm	TOLERANCES UNLESS OTHERWISE SPECIFIED:	PRODUCT SPEC: 108-19428	NAME: 1X2 CAGE ASSEMBLY, BEHIND BEZEL, QSPF28	
0 PLC ±0.5	1 PLC ±0.13	APPLICATION SPEC: 114-32023	SIZE: A1	
2 PLC ±0.013	3 PLC ±0.013	WEIGHT: -	CAGE CODE: -	
4 PLC ±0.0001	ANGLES ±0.0001	Customer Drawing	DRAWING NO: 2227104	
MATERIAL:	FINISH:	SCALE: 4:1	SHEET: 4	OF: 5

LOC		DIST		REVISIONS			
P	LTN	DESCRIPTION	DATE	DMN	APVD		
-	-	SEE SHEET 1	-	-	-	-	-



3.4 MIN  $\Delta$   
 $\phi$  OF FINAL ROW OF HOLES  
 TO  $\phi$  OF FIRST ROW OF HOLES  
 FOR NEXT ADJACENT CAGE

THIS DRAWING IS A CONTROLLED DOCUMENT. DIMENSIONING AND TOLERANCING PER: ASME Y14.5M-2009		DMN: C. VALENTINE 22FEB2013 CHK: E. BRIANT 22FEB2013 APVD: E. BRIANT 22FEB2013	TE Connectivity NAME: 1X2 CAGE ASSEMBLY, BEHIND BEZEL, QSP28 PRODUCT SPEC: 108-19428 APPLICATION SPEC: 114-32023 WEIGHT: - Customer Drawing	
DIMENSIONS: mm	TOLERANCES UNLESS OTHERWISE SPECIFIED:	SIZE: A100779	CAGE CODE: C=2227104	DRAWING NO: 2227104
0 PLC ±0.5	1 PLC ±0.13	RESTRICTED TO:	SCALE: 4:1	SHEET: 5 OF 5
2 PLC ±0.13	3 PLC ±0.013	REV: C		
4 PLC ±0.001	ANGLES ±0.0001			
MATERIAL:	FINISH:			