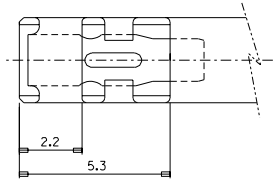
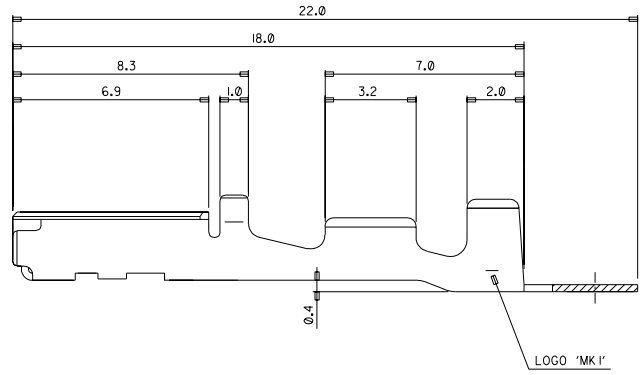
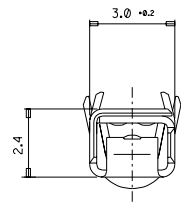
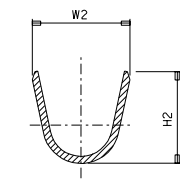
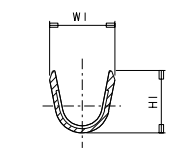
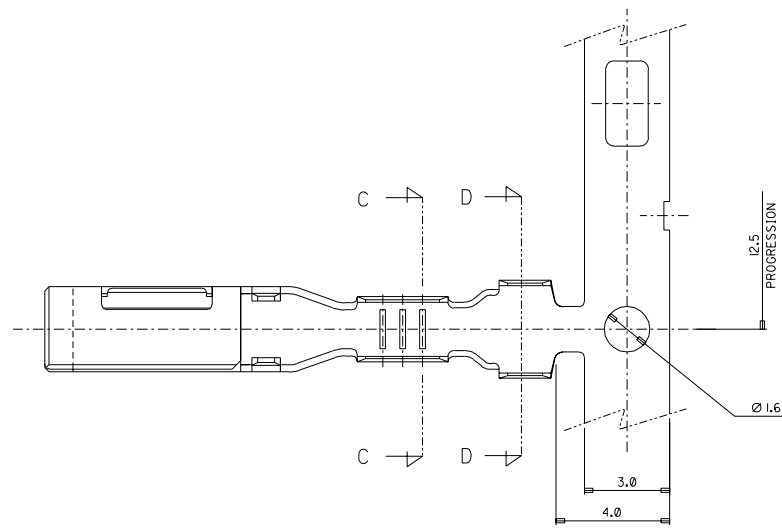
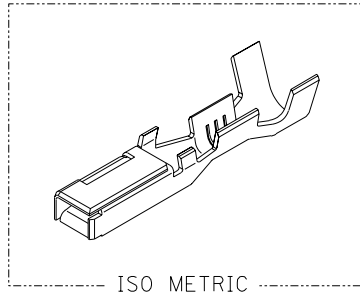


PROJECT NO. SD-35407-002
 SIMILAR ITEM
 DWG. NO. SD-35407-002
 DO NOT SCALE DRAWING DIMENSION IN METRIC



NOTE

1. MATERIAL: COPPER ALLOY, t=0.25.
2. FINISH: PRE-TIN PLATE.
3. RECOMMENDED LENGTH OF WIRE STRIP: 5.0-5.6.
4. INSERTION-EXTRACTION FORCE WITH TAB TERMINAL P/N 35420.
 INSERTION FORCE : 0.30±1.0 Kgf.
 AFTER SIX TIMES OF INSERTION & EXTRACTION FORCE : 0.15±1.0 Kgf.

| NO. | ENG-NO. | TYPE | PART NAME | CABLE SIZE (mm ²) | DIMENSION | | | |
|-----|------------|------|-------------------|-------------------------------|-----------|-----|-----|-----|
| | | | | | W1 | H1 | W2 | H2 |
| 1 | 35407-6102 | (S) | .090 FEMALE TER'L | AVSS(AVS) 0.3 - 0.5 | 2.5 | 2.4 | 3.4 | 3.5 |
| 2 | 35407-6202 | (L) | .090 FEMALE TER'L | AVSS(AVS) 2.0 | 3.6 | 3.5 | 4.0 | 4.0 |
| 3 | 35407-6502 | (M) | .090 FEMALE TER'L | AVSS(AVS) 0.85 - 1.25 | 2.6 | 3.0 | 4.0 | 4.0 |

CHANGED TENSION SPEC.
 EC NO. KGR2002-0090
 DRWNS:MKIM 02/07/08
 CHK'S:SIK/KIM 02/07/08
 APPR:W.LEE

QUALITY SYMBOLS
 MAJOR
 CRITICAL

GENERAL TOLERANCES:
 (UNLESS SPECIFIED)
 mm INCH
 4 PLACES ±0. ±.
 3 PLACES ±0. ±.
 2 PLACES ±0. ±.
 1 PLACE ±0.25 ±.
 ANGULAR: ± 1°

SCALE 8:1
 DESIGN UNITS
 mm INCH
 DRAWN BY & DATE
 B.C.YOON '98.4.10
 CHECKED BY & DATE
 B.K.CHOI '98.4.10
 APPROVED BY & DATE
 C.W.LEE '98.4.10

DIMENSIONS:
 mm INCH
 mm ONLY
 SHT REV
 REVISE ON CAD ONLY
 TITLE:
 .090 FEMALE TER'L (FT TYPE)
 MOLEX INCORPORATED
 CAD FILENAME: SD35407.DGN
 MATERIAL NO.: 354076102
 DRAWING NO.: SD-35407-002
 SHEET NO.: 1 OF 1
 DRAFT WHERE APPLICABLE MUST REMAIN WITHIN DIMENSIONS
 THIS DRAWING CONTAINS INFORMATION THAT IS PROPRIETARY TO MOLEX INCORPORATED AND SHOULD NOT BE USED WITHOUT WRITTEN PERMISSION.
 SIZE C