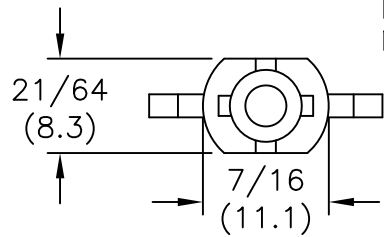


TO PRESS FIT IN A
 $.312 \pm .003$ (7.9 ± 0.08)
 DIA. HOLE, IN A $.25$ (6.4)
 MIN. PANEL THICKNESS



PART NO.	"A"	"B" BUNDLE DIA. RANGE	"C" REF.
BHKL-350-4-01	1/4 (6.4)	.30 - .40 (7.6 - 10.2)	1.0 (25.4)
*BHKL-350-6-01	3/8 (9.5)		
*BHKL-350-8-01	1/2 (12.7)		
BHKL-350-10-01	5/8 (15.9)		
BHKL-450-4-01	1/4 (6.4)	.40 - .50 (10.2 - 12.7)	1-1/8 (28.6)
BHKL-450-6-01	3/8 (9.5)		
BHKL-450-8-01	1/2 (12.7)		
BHKL-450-10-01	5/8 (15.9)		
BHKL-750-4-01	1/4 (6.4)	.70 - .80 (17.8 - 20.3)	1-1/2 (38.1)
BHKL-750-6-01	3/8 (9.5)		
BHKL-750-8-01	1/2 (12.7)		
BHKL-750-10-01	5/8 (15.9)		

*PARTS AVAILABLE BY SPECIAL ORDER ONLY

NOTES:

- MATERIAL: NYLON 6/6 UL 94 V-2 (RMS-01).
 NYLON 6/ UL 94 V-0 (RMS-19).
 AVAILABLE BY SPECIAL ORDER.
- COLOR: NATURAL.

F SEE ECN #1262 FOR CHANGES SK 12.11.06 E SEE ECN #914 FOR CHANGES SK 01.14.05 D SEE ECN #818 FOR CHANGES SM 10.01.04 C CHANGED FILE NUMBER SM 05.31.01 B MAT'L RMS-19 ADDED J.L. 12.18.97 A "C" DIM'S CHANGED; CONV. TO ACAD PB 07.11.95 REV DESCRIPTION ENGR DATE			TITLE: BLIND HOLE KURLY-LOK TOLERANCES UNLESS NOTED .XX=±.010 .XXX=±.005 FRAC=±1/64 ANG=±1°			FILE # BHKL MAT'L: SEE NOTES RE: RICHCO, INC.		DWN: P.B. DT: 07-11-95 APP: DT: RICHCO INC. PO BOX 804238, CHICAGO, 60680 (773) 539-4060		DWG IN IN (MM) FINAL PART # SEE TABLE PRINT TYPE CA	
---	--	--	--	--	--	---	--	--	--	---	--