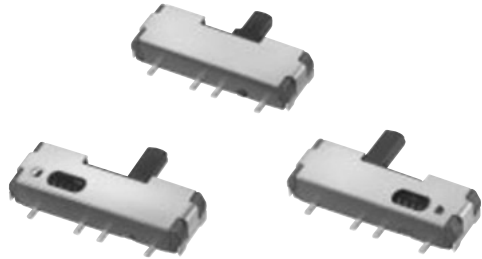


## 2 mm Size Slide Switches for Reflow Soldering

Japan

Type: **ESD16**

Self-returning and SMD type



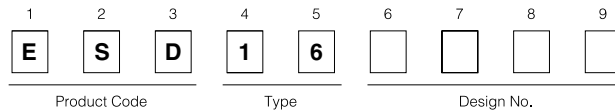
### ■ Features

- Dual application: detent and self-returning type
- Available for reflow soldering
- Available for automatic mounting

### ■ Recommended Applications

- Signal switches for Cordless Telephones
- Power switches for Digital Still Cameras and Notebook Personal Computers

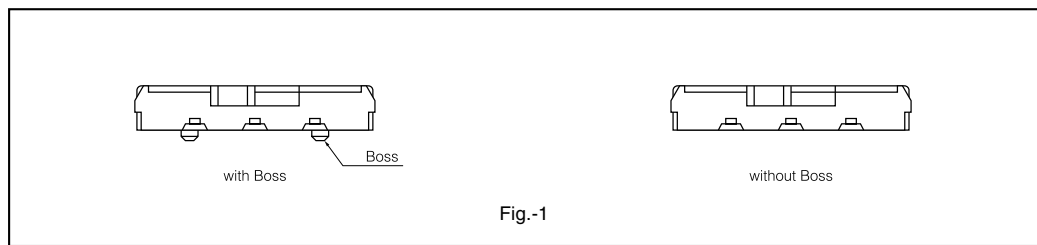
### ■ Explanation of Part Numbers



### ■ Standard Types and Part Numbers

Packaging Style	Boss		with Boss		without Boss	
	Type	Lever length	2.0 mm	2.5 mm	2.0 mm	2.5 mm
Embossed Taping	with Detent		ESD165205	ESD165206	ESD165207	ESD165208
	Self-returning (Right)		ESD165225	ESD165226	ESD165227	ESD165228
	Self-returning (Left)		ESD165235	ESD165236	ESD165237	ESD165238
Bulk Packaging	with Detent		ESD165255	ESD165256	ESD165257	ESD165258
	Self-returning (Right)		ESD165275	ESD165276	ESD165277	ESD165278
	Self-returning (Left)		ESD165285	ESD165286	ESD165287	ESD165288

Note: With/without Boss, See Fig.-1



### Major Specifications

Types	with Detent	Self-returning
Lever Position	Horizontal	
Rating	50 $\mu$ A 3 Vdc to 0.2 A 5 Vdc	
Travel	2.0 mm	2.7 mm
Poles & Throws	1-pole 2-throws	
Switching Mode	Non-shorting	
Lever Length	2 mm, 2.5mm	
Minimum Quantity/Packing Unit	2000 pcs. (Reel Pack)	
Quantity/Carton	4000 pcs.	

### Dimensions in mm (not to scale)

<p><b>No. 1</b></p> <p>Registered by EIAJ-SMD Outline Registration System</p> <p><b>ESD165205</b></p> <p>1-pole 2-throws With Detent Operating Force ② ↔ ① 1.96 N±0.98 N</p>	<p>Registered by EIAJ-SMD Outline Registration System</p>	<p>Technical drawing of ESD165205 slide switch. Top view shows dimensions: 11.0, 3.0, 1.5, 3.0, 0.4, 0.3, 0.7, 1.30±0.05, 2.0 Travel, 2.0±0.1, 0.5, 2.0, 0.1, 0.05, 1.15, L=2.0, 2.5. Side view shows dimensions: 0.5, 2.0±0.1, 0.1, 0.05, 1.15, L=2.0, 2.5. Circuit diagram shows a 1-pole 2-throw switch.</p>
<p><b>No. 2</b></p> <p>Registered by EIAJ-SMD Outline Registration System</p> <p><b>ESD165225</b></p> <p>1-pole 2-throws Self-returning (Right) Operating Force ② ↔ ① 2.16 N±0.98 N</p>	<p>Registered by EIAJ-SMD Outline Registration System</p>	<p>Technical drawing of ESD165225 slide switch. Top view shows dimensions: 11.0, 3.0, 1.5, 3.0, 0.4, 0.3, 0.7, 1.30±0.05, 2.1 ON Travel, 2.7 Full Travel, Return direction, 2.0±0.1, 0.5, 2.0, 0.1, 0.05, 1.15, L=2.0, 2.5. Side view shows dimensions: 0.5, 2.0±0.1, 0.1, 0.05, 1.15, L=2.0, 2.5. Circuit diagram shows a 1-pole 2-throw switch.</p>
<p><b>No. 3</b></p> <p>Registered by EIAJ-SMD Outline Registration System</p> <p><b>ESD165235</b></p> <p>1-pole 2-throws Self-returning (Left) Operating Force ② ↔ ① 2.16 N±0.98 N</p>	<p>Registered by EIAJ-SMD Outline Registration System</p>	<p>Technical drawing of ESD165235 slide switch. Top view shows dimensions: 11.0, 3.0, 1.5, 3.0, 0.4, 0.3, 0.7, 1.30±0.05, 2.1 ON Travel, 2.7 Full Travel, Return direction, 2.0±0.1, 0.5, 2.0, 0.1, 0.05, 1.15, L=2.0, 2.5. Side view shows dimensions: 0.5, 2.0±0.1, 0.1, 0.05, 1.15, L=2.0, 2.5. Circuit diagram shows a 1-pole 2-throw switch.</p>

### Packaging Specifications

Standard Reel Dimensions in mm (not to scale)

<p>Taping Reel</p> <p>Diagram of a standard reel showing dimensions: diameter <math>\phi 330.0 \pm 2.0</math>, width 24.4, and hole spacing 2.0.</p>	<p>Embossed Carrier Taping</p> <p>Diagram of an embossed carrier tape showing dimensions: pitch <math>P=12.0 \pm 0.1</math>, hole diameter <math>\phi 1.5 \pm 0.1</math>, and other dimensions: 24.0±0.3, 11.5, 1.75±0.1, 4.0±0.1, 2.0±0.1.</p>
--	---