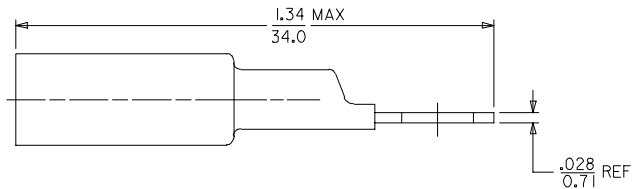
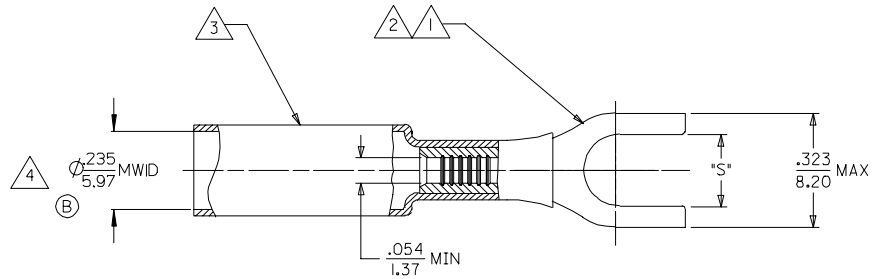


MATERIAL NUMBER	ENGINEERING NUMBER	STUD SIZE	SLOT 'S' ±0.10 ±0.25
191640006	SA-235-06	#6	Ø.146/3.71
191640007	SA-235-08	#8	Ø.173/4.39
191640008	SA-235-10	#10	Ø.198/5.03



NOTES:

- 1. TERMINAL MATERIAL: COPPER ALLOY
- 2. FINISH: ELECTRO TIN PLATE.
- 3. INSULATION MATERIAL: HEAT SHRINKABLE TUBING WITH HOTMELT ADHESIVE INNER LINER. COLOR: RED.
- 4. MWID = MAXIMUM WIRE INSULATION DIAMETER.

SALES DRAWING

CHANGED MWID EC NO: ETC2006-0154 DRAWN BY: ASAYDEH CHKD: JLOMASTRO APPR: JPAWLICK 2005/12/13 2005/12/13 2005/12/13	QUALITY SYMBOLS ▽=0 ▽=0	GENERAL TOLERANCES (UNLESS SPECIFIED)		DIMENSION STYLE IN/MM	SCALE ---	DESIGN UNITS INCH	THIRD ANGLE PROJECTION
		4 PLACES ± --- ± --- 3 PLACES ± --- ± --- 2 PLACES ± --- ± --- 1 PLACE ± --- ± --- ANGULAR ± --- °	DRAWN BY ASAYDEH CHECKED BY JLOMASTRO APPROVED BY RDEROSS	DATE 05/12/13 DATE 05/12/13 DATE 05/12/13	TITLE SPADE TERMINAL NIAC 22-18 AWG	MATERIAL NO. SEE CHART	DOCUMENT NO. SD-19164-025
DRAFT WHERE APPLICABLE MUST REMAIN WITHIN DIMENSIONS		THIS DRAWING CONTAINS INFORMATION THAT IS PROPRIETARY TO MOLEX INCORPORATED AND SHOULD NOT BE USED WITHOUT WRITTEN PERMISSION					