

ATLANTIC VERSION TERMINATOR INTERFACE ADAPTER. PART NUMBER, REVISION, DESCRIPTION, FEED TYPE. CONVERT TO, PART NUMBERS REQUIRED.

APPLICATOR DATA. CRIMP SIZE, WIRE, INSUL. APPLICATOR INSTRUCTIONS 408-10389.

TERMINAL DATA: TE TERMINAL. TE CRIMP SPECIFICATION. TERMINAL NAME: 2.8mm FASTIN FASTON TAB. WIRE STRIP LENGTH, INSULATION DIAMETER RANGE.

WIRE SIZE, CRIMP HEIGHT mm [INCH], CRIMP HEIGHT REFERENCE SETTING.

- RECOMMENDED SPARE PARTS
GREASE BEARING SURFACES LIGHTLY
LUBRICATE DAILY PER THE APPLICATOR INSTRUCTION SHEET SUPPLIED WITH THE APPLICATOR.
APPLICATOR SPECIFIC DATA TO BE ENTERED INTO BLANK MEMORY CHIP AT ASSEMBLY.
ADJUSTMENT OF THE STRIPPER MAY BE REQUIRED WHEN MOVING THE APPLICATOR BETWEEN BENCH AND LEADMAKER APPLICATIONS.
APPLY PART NUMBER 1-23419-5 LOCTITE TO THREADS OF ITEM 62.
GREASE THREADS, GROOVE AND O-RING ON ITEMS 35 & 252.
MAGNET, ITEM 166 MUST BE ORIENTED CORRECTLY IN ORDER TO PROPERLY ACTUATE THE COUNTER.
CRIMP HEIGHT REFERENCE SETTING WAS THE SETTING USED WHEN THE APPLICATOR WAS QUALIFIED AT THE FACTORY.
SPARE FEED CAM STORAGE LOCATION REFER TO INSTRUCTION SHEET FOR ADDITIONAL INFORMATION.
TO CONVERT THE APPLICATOR TO A NON-CARRIER CUTTING STYLE, REMOVE ITEM 13 AND ATTACH TO THE LOCATION ON THE BACK SIDE OF THE HOUSING.
WHEN ASSEMBLING A NON CRIMP HEIGHT ADJUST APPLICATOR (-6) USE SHIMS FROM ITEM 260 TO ACHIEVE A NOMINAL SHIM HEIGHT OF 3.64.

*WARNING
ON INSTALLATION, SET WIRE DISC, ITEM 40 TO LARGEST WIRE SIZE SETTING. USE OF SETTINGS BELOW MINIMUM REQUIRED CRIMP HEIGHT SETTING WILL CAUSE DAMAGE TO CRIMP TOOLING.

Table with 3 columns: PART NO, DESCRIPTION, ITEM NO. Includes parts like APPLICATOR SHIM PACK, O-RING, PUSH ROD, AIR FEED, BUSHING, FEED CAM.

ATLANTIC VERSION
Shown on sheets 1 of 4 & 2 of 4
(Pacific version shown on sheets 3 of 4 & 4 of 4)

REVISIONS table with columns: P, LTR, DESCRIPTION, DATE, DWN, APVD. Shows revisions 3 (REVISED) and A (RELEASED).

Large assembly drawing table with columns: P, LTR, DESCRIPTION, DATE, DWN, APVD. Lists numerous components like DETENT PIN, SPRING, RAM, CAM, WASHER, RETAINER, SCR, SHCS, MECHANICAL FEED ASSEMBLY, AIR FEED MODULE, TAG IDENTIFICATION, SPACER, RING, MAGNET, COUNTER, SPRING, FEED FINGER, PIN, HOLDER, MEMORY CHIP, SERVO FEED LATCH ASM, FEED FINGER ASSEMBLY, SPACER, CRIMPER, SPRING, HOLDER, DOCUMENTATION PACKAGE, DEPRESSOR, TAG IDENTIFICATION, SCREW, LIMITER, SCR, PIN, PAWL, SHCS, SCR, NUT, BUMPER, SPACER, SCR, FEED CAM, FEED CAM, APPLICATOR BASIC ASSEMBLY, RAM, SCR, DISC, APPLICATOR SHIM PACK, RAM WASHER, FA HEAD, BOLT, SUPPORT, SCR, HEX HEAD, SPACER, STRIP GUIDE, ASSEMBLY, STRIP GUIDE, SPACER, CRIMPER, STRIP GUIDE, SCR, WASHER, STRIPPER, INSERT, SPRING, STOP, SHEAR, SHEAR HOLDER, FLOATING SHEAR, ANVIL, SPACER, DEPRESSOR, BLOCK, CRIMPER, CRIMPER, SPACER, CRIMPER.

Technical drawing header and title block. Includes dimensions, tolerances, material, finish, weight, scale, and sheet information.

LOC		DIST		REVISIONS			
A	66	P	LTM	DESCRIPTION	DATE	OWN	APVD
		-	-	SEE SHEET 1	-	-	-

FEED TYPE MECHANICAL



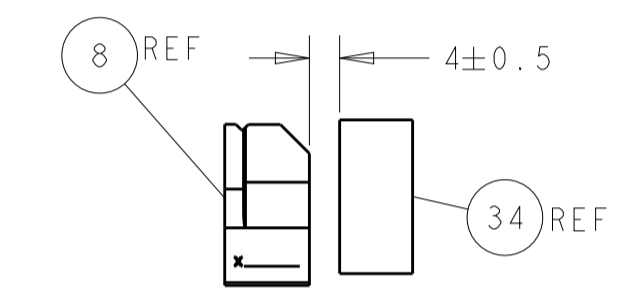
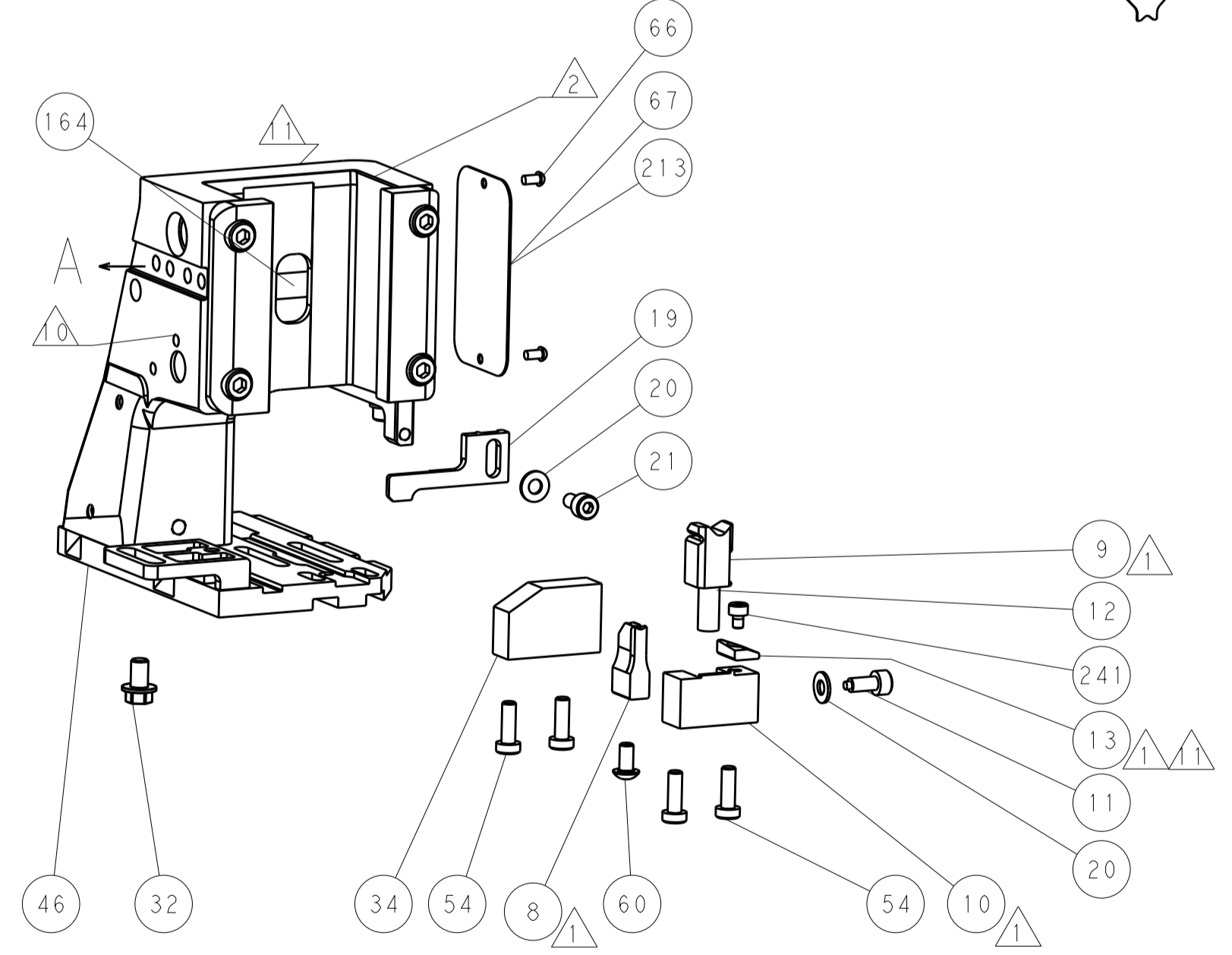
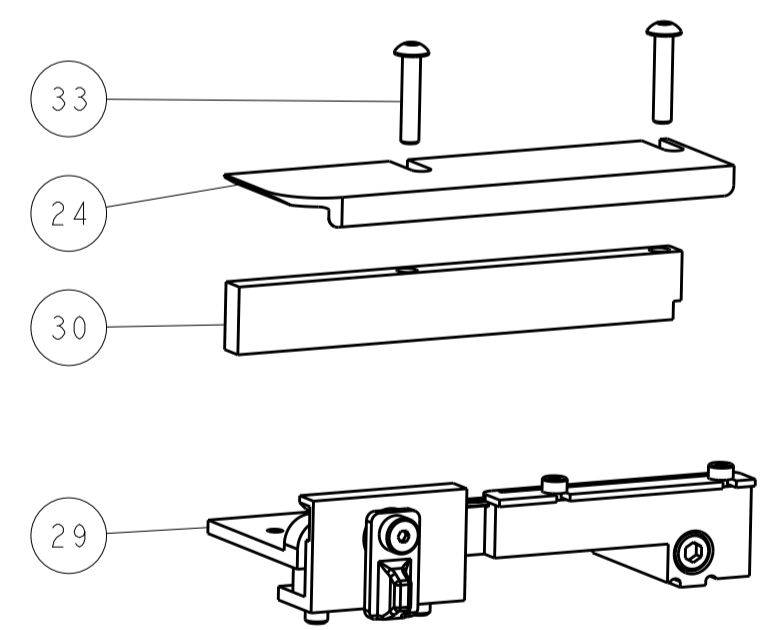
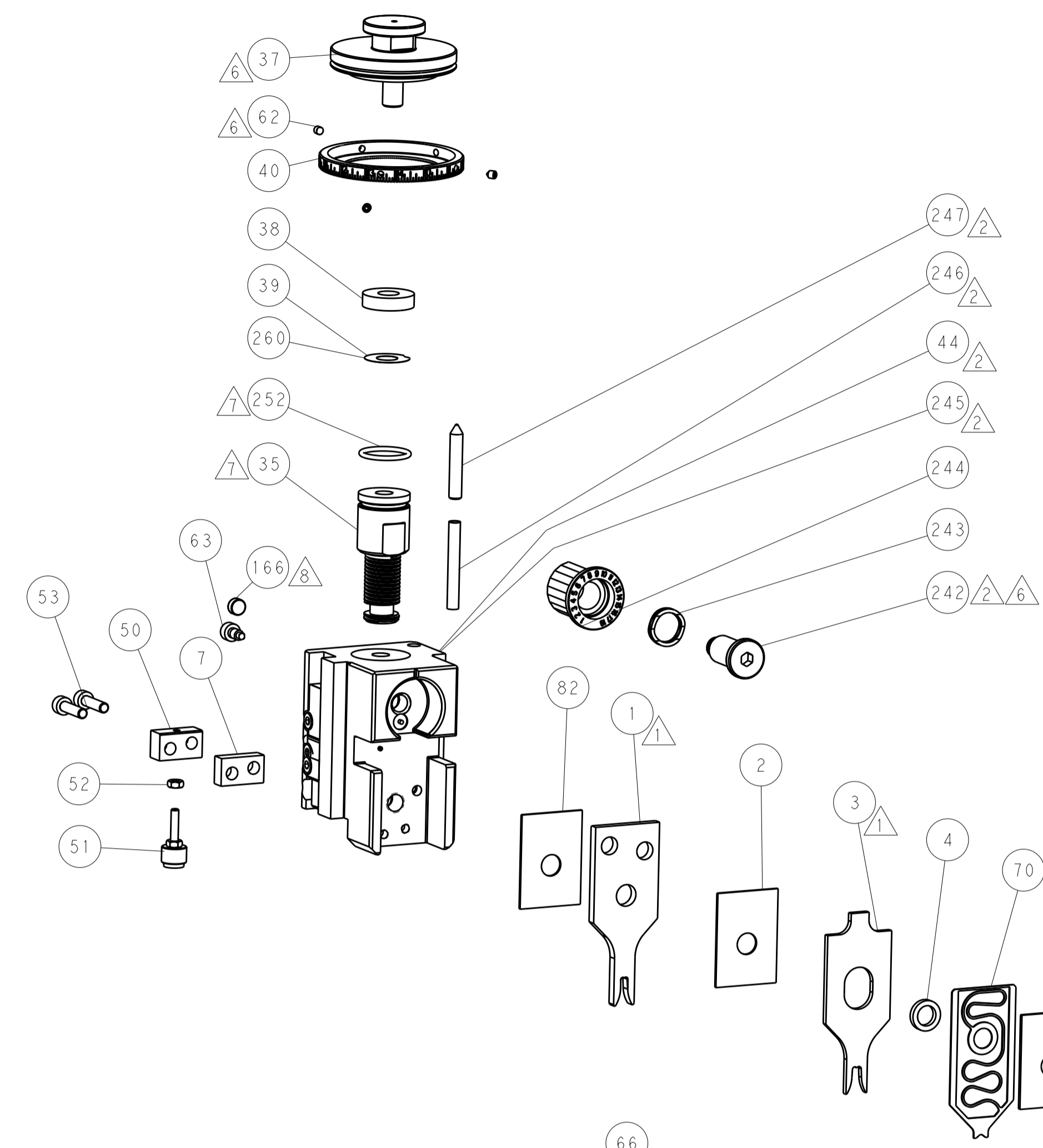
PNEUMATIC



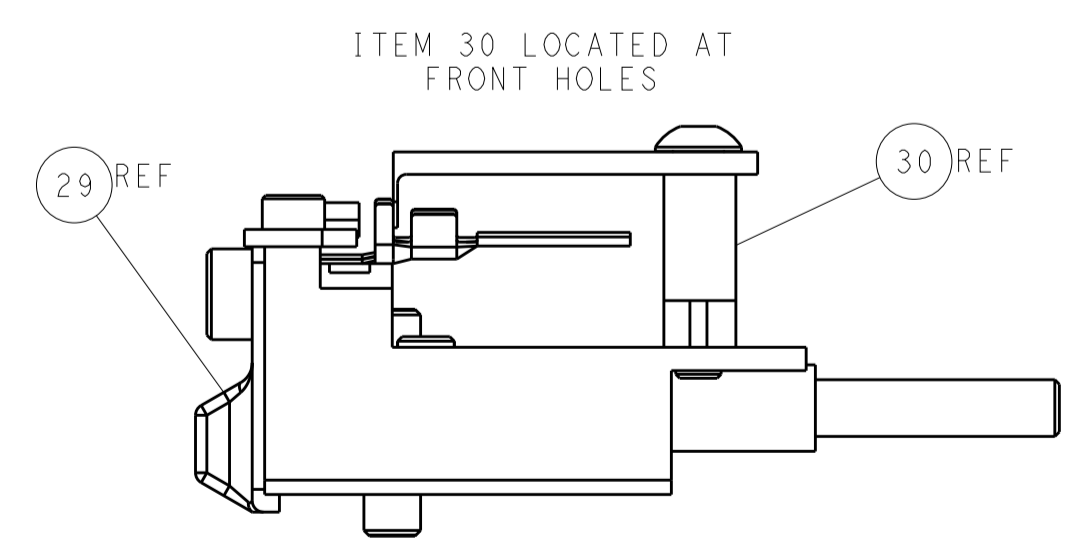
SERVO LATCH PLATE



CAM POSITIONS



TERMINAL SUPPORT LOCATION



FEED TRACK POSITION GUIDE BY INSULATION BARREL

ATLANTIC VERSION
 Shown on sheets 1 of 4 & 2 of 4
 (Pacific version shown on sheets 3 of 4 & 4 of 4)

DIMENSIONS:		TOLERANCES UNLESS OTHERWISE SPECIFIED:		DWN Y. YIN 12JUL2011		TE Connectivity	
mm	0 PLC ±	1 PLC ±	2 PLC ±	3 PLC ±	4 PLC ±	Harrisburg, PA 17105-3608	
MATERIAL:		FINISH:		CHK G. BAILEY 12JUL2011		NAME Ocean Side Feed Applicator	
				APVD S. XI 12JUL2011		SIZE CAGE CODE DRAWING NO RESTRICTED TO	
				PRODUCT SPEC		A1 00779 ©=2151156	
				APPLICATION SPEC		Customer Accessible Production Drawing	
				WEIGHT		SCALE 1:2 SHEET 2 OF 4 REV A	

LOC		DIST		REVISIONS			
A	66	P	LTM	DESCRIPTION	DATE	DWN	APVD
		-		SEE SHEET 1			

FEED TYPE MECHANICAL



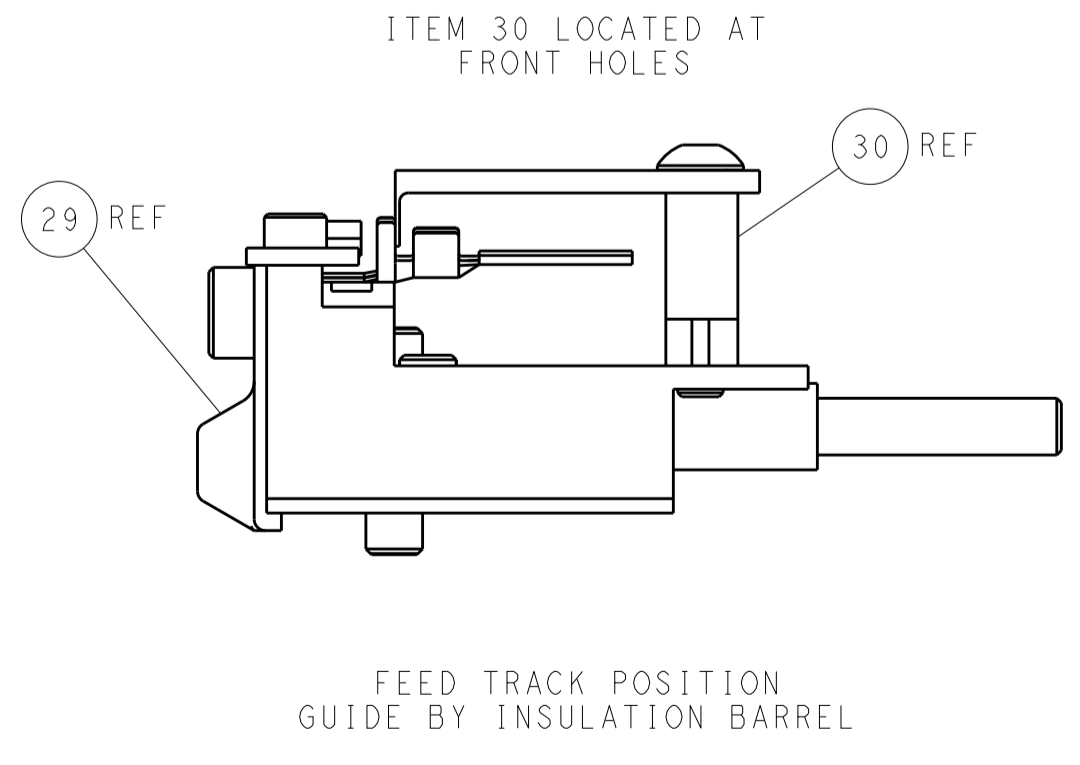
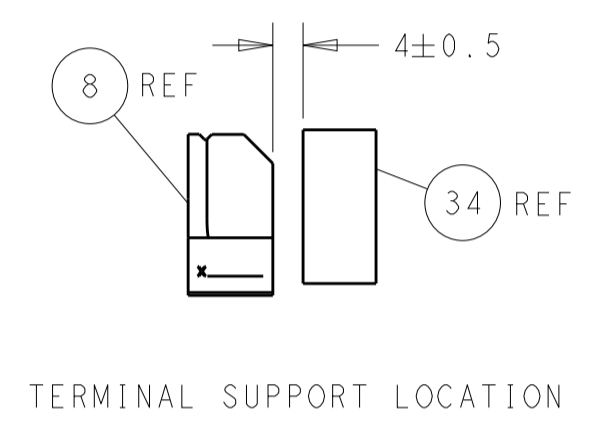
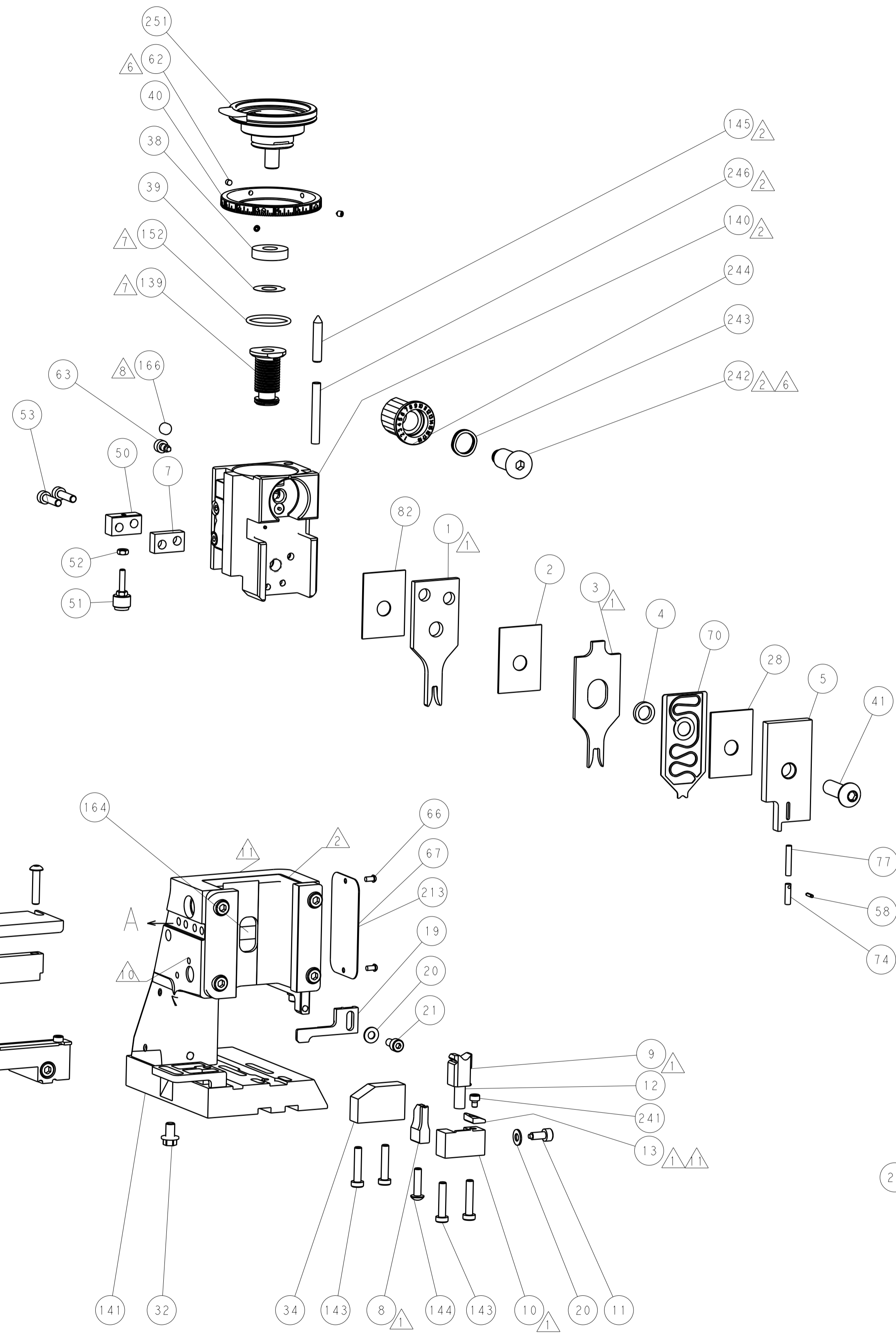
PNEUMATIC



SERVO LATCH PLATE



CAM POSITIONS



PACIFIC VERSION
 Shown on sheets 3 of 4 & 4 of 4
 (Atlantic version shown on sheets 1 of 4 & 2 of 4)

DIMENSIONS:		TOLERANCES UNLESS OTHERWISE SPECIFIED:		DWN Y. YIN 12 JUL 2011		STE Connectivity Harrisburg, PA 17105-3608	
mm	0 PLC	±		CHK G. BAILEY 12 JUL 2011	NAME	Ocean Side Feed Applicator	
	1 PLC	±		APVD S. XI 12 JUL 2011	PRODUCT SPEC	RESTRICTED TO	
	2 PLC	±		APPLICATION SPEC	SIZE	CAGE CODE	DRAWING NO
	3 PLC	±		WEIGHT	A1	00779	©=2151156
	4 PLC	±		MATERIAL	Customer Accessible Production Drawing	SCALE	1:2
	ANGLES	±		FINISH		SHEET	4 OF 4
						REV	A