



**Low-profile SlimRay™ Pre-Wired LED COB Array Holders simplify the LED installation process and reduce assembly time with compression contacts that eliminate hand soldering**

## SlimRay™ Pre-Wired LED Chip-On-Board (COB) Array Holders

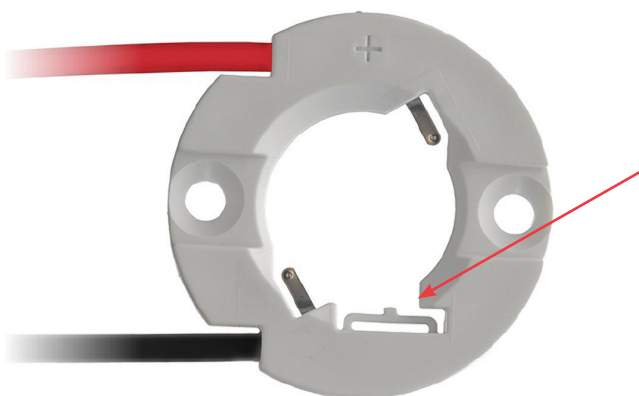
**180555** Holder for LED COB Array 13.35 by 13.35mm

### Features and Benefits

|  |  |
|--|--|
| Pre-stripped, pre-installed color-coded power wires that eliminate the need for hand soldering | Enables intuitive anode and cathode identification. Reduces risk of damaging the LED COB. Designed for use with Cree* CXA13 arrays                                 |
| Industry-leading low-profile design (3.15mm, based on 20 AWG wire)                             | Allows optics to be mounted closer to the LES (light emitting surface)   |
| Wires terminated with proven Molex crimp-wire processes  | Provides high durability and reliability for the life of the LED   |
| Insert-molded attachment of wires to holder housings over 50N                                  | Deliver superior wire-to-holder retention forces. Ensure a stable COB contact interface  |
| Integrated LED pre-hold tab  | Secures array prior to mounting the assembly to a heat sink. Minimizes installation time by allowing LED array to be secured to the holder prior to final assembly |
| Robust housing design  | Ensures stable, long-term mechanical attachment even in high ambient temperatures  |
| Gold-plated compression contacts interface with array pads                                     | Provide stable power connections across a wide range of environments and conditions  |
| Standard metric screw-mount attachment   | Provides secure attachment with simple alignment to heat sink  |



SlimRay™ Pre-Wired LED Array Holder for 13.35 by 13.35mm COB Arrays



Integrated pre-hold tab secures array prior to mounting assembly to heat sink

\*Cree is a registered trademark of Cree, Inc.

### Applications

- All general illumination applications
- Downlighting
  - Track
  - Pendants
  - Linear
- Area Lighting
- Roadways
  - Parking Lots
  - Wall Packs

### Specifications

#### Reference Information

Packaging: Bubble wrap/cardboard layer per PK-180559-020  
 UL File No: TBD  
 UL Rating Pending - 180555  
 CSA File No.: E345583 – Pending: 180555  
 Designed In: Millimeters  
 RoHS: Yes  
 REACH SVHC: Contains SVHC: No

#### Electrical

Voltage (max.): 600V DC  
 Current (max.): 3.0A peak  
 Contact Resistance: 20 milliohms max. change  
 Dielectric Withstanding Voltage: 300V DC  
 Insulation Resistance (min.): 5000 Megohms

#### Mechanical.

Wire Pull Out Force (min.): 50N  
 Durability (min.): 5 Cycles

#### Physical

Housing: White PBT 30% Glass fill UL 94V0  
 Contact: Copper Alloy  
 Plating: Contact Area — Gold (Au)  
 Underplating — Nickel (Ni)

### Ordering Information

| Order No.                   | COB Footprint    | Wire Colors   | Wire Length      | Integrated Pre-Hold Tab | Mounting Method | Wire Trap | Optical Interface |
|-----------------------------|------------------|---------------|------------------|-------------------------|-----------------|-----------|-------------------|
| <a href="#">180555-0001</a> | 13.35 by 13.35mm | Yellow, White | 110.00mm(+/-5mm) | Yes                     | M2.5 Screw      | No        | Flat top          |
| <a href="#">180555-0002</a> | 13.35 by 13.35mm | Red, Black    | 254.00mm(+/-5mm) | Yes                     | M2.5 Screw      | No        | Flat top          |