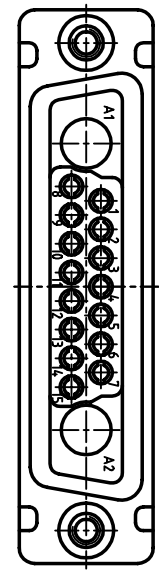
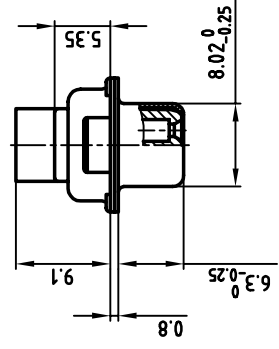
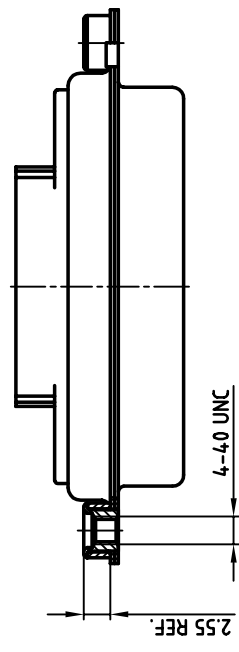
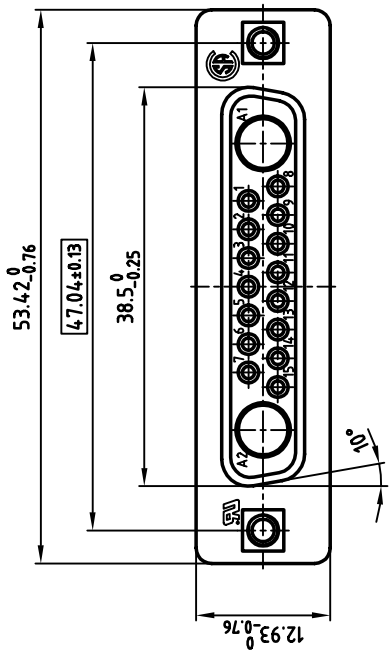


used for: D-SUB COMBINATION CRIMP



NOTES:

1. METALSHELLS: STEEL; min. 320µ" TIN
2. INSULATORS: PBT GF UL 94 V-0, BLACK
3. THREADED INSERT: COPPER ALLOY; min. 200µ" TIN over 80µ" NICKEL
4. COLLAR: COPPER ALLOY; min. 200µ" TIN over 80µ" NICKEL
5. MAXIMUM TORQUE VALUE FOR THREAD: 6" LBS
6. = CRITICAL DIMENSION: SPC

Directive 2002/95/EC
"RoHS"
Compliant

THIS DRAWING MAY NOT BE COPIED OR REPRODUCED IN ANY WAY, AND MAY NOT BE PASSED ON TO A THIRD PARTY WITHOUT WRITTEN PERMISSION. OWNERSHIP AND COPYRIGHT OF CONEC GMBH DO NOT ALTER CAD DRAWING BY HAND

tolerance		name		date		date		name	
		2001							
		drawn	17.05.	Parei					
		appd.	17.05.	E. Mickenbecker					
		norm							
		e-old							
scale: 2:1		material: SEE NOTES		title: D-SUB COMBINATION FEMALE		CRIMP STYLE 17W2S		with threaded insert	
dwg no: 13K1A252A		AutoCAD 2000		DIN-A		3		sh: 1/1	
part no: 3017W2SXK99A30X									

