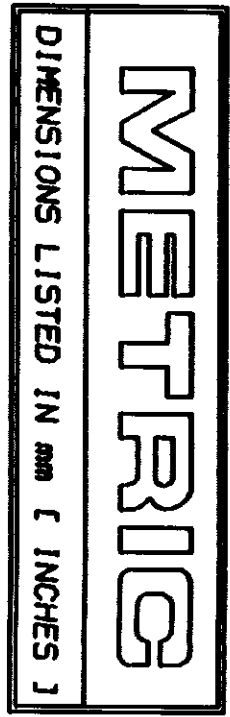
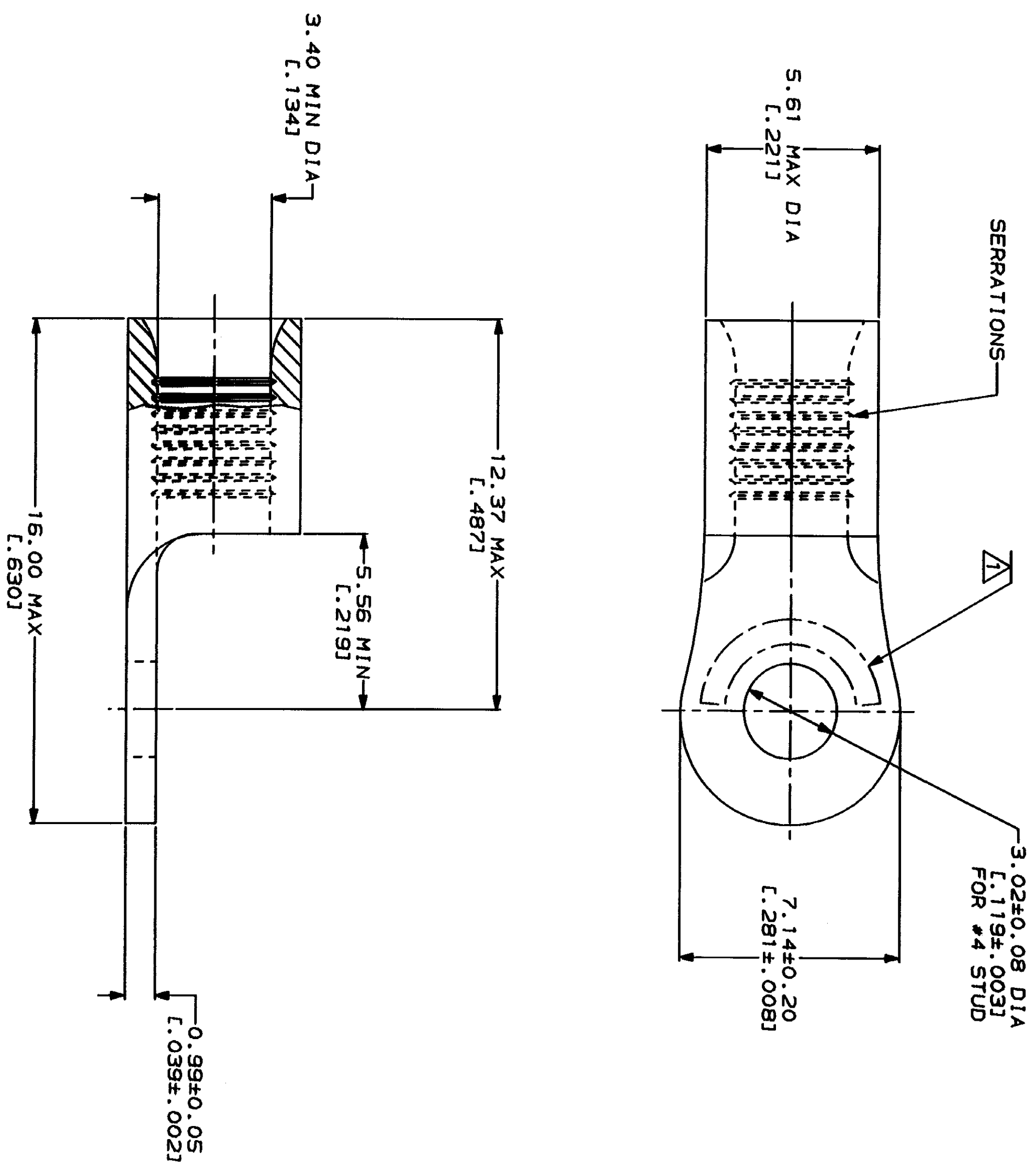


LOC	DIST	ZONE	LTM	DESCRIPTION	DATE	APPD
G	14			REVISED PER 0720-0230-93	2/28/93	AMP



AMP	UL
WIRE RANGE	E13288 Listed
12-10 AWG STRANDED	12-10 AWG STRANDED
● LR7189 Certified	MILITARY P/N AND CLASS
NOT CERTIFIED	NOT APPLICABLE

△ STAMP AMP 12-10* APPROX AS SHOWN



AMP INCORPORATED
CUSTOMER SERVICE SYSTEMS

FOR ADDITIONAL PRODUCT INFORMATION OR COPIES OF DRAWINGS AND TECHNICAL DOCUMENTS
1-800-522-6752
FOR APPLICATION TOOLING ASSISTANCE CENTER
1-800-722-1111
FOR ORDER ENTRY
1-800-526-5142

MAX RECOMMENDED OPERATING TEMPERATURE: 170°C MAX
VOLTAGE RATING: NOT APPLICABLE
WIRE CROSS SECTIONAL AREA RANGE: 2.62-6.64mm² [5,180-13,100] CIR MILS STRANDED

DO NOT SCALE PRINT. UNLESS SPECIFIED DIMENSIONS IN MILLIMETERS - TOLERANCES ON: 1 PLG DEC ± .1 2 PLG DEC ± .1 3 PLG DEC ± .1 ANGLES

DR 2-5-93 TA BRINKMAN
CHK 2-5-93 DA PATTERSON
APPD 2-5-93 DE MILLER
APPD 2-5-93 JL NECKLEY
PRODUCT SPEC

AMP AMP Incorporated
Harrisburg, PA 17185-3608

TERMINAL, RING TONGUE, BUDGET

FINISH TIN PLATE
0.0025±[L.000100] MIN THK PER MIL-T-10727
APPLICATION SPEC
SCALE 8:1
CAGE CODE 00779
DRAWING NO 34891
SHEET 1 OF 1