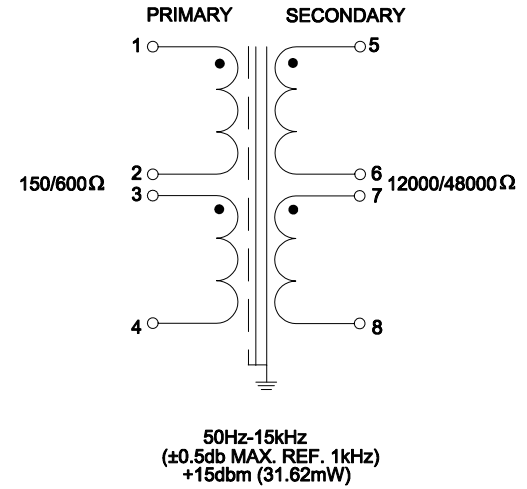
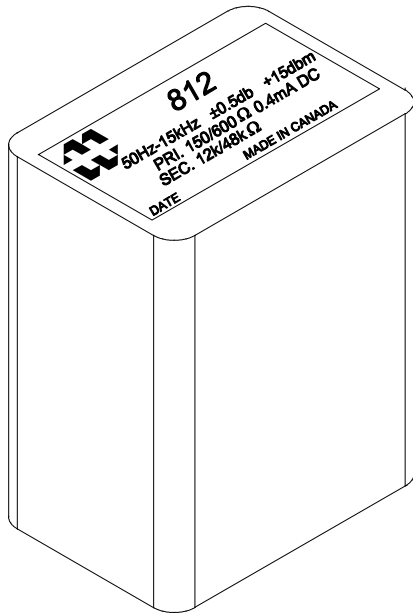
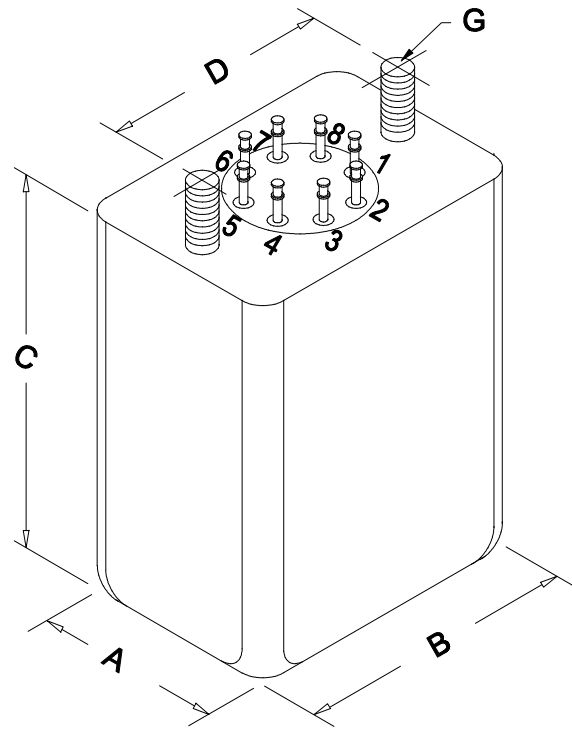


**DIMENSIONS:**

A	1.250" ±0.063
B	1.750" ±0.063
C	2.560" MAX.
D	1.320" ±0.063
G	#6-32 X 0.281 SCREWS



ELECTRICAL DATA:		
TESTS	CONDITIONS	ACCEPTANCE CRITERIA
Iex	@ 5.2V, 60Hz, Pin 1 - Pin 4	2.5mA Max.
Sec. N.L.V	@ 5.2V, 60Hz, Pin 1 - Pin 4	
	Pin 3 - Pin 4 =	2.600V ±2%
	Pin 5 - Pin 6 =	23.64V ±2%
	Pin 7 - Pin 8 =	23.64V ±2%
DCR	@ 20°C, Pin 1 - Pin 2 =	36.11 Ω ±20%
	@ 20°C, Pin 3 - Pin 4 =	36.11 Ω ±20%
	@ 20°C, Pin 5 - Pin 6 =	1.432kΩ ±20%
	@ 20°C, Pin 7 - Pin 8 =	1.432kΩ ±20%
HIPOT	PRIMARY - SECONDARY	750V, 60Hz, 1 SEC

REV.#	REVISION	DATE	HAMMOND MANUFACTURING™		ELECTRONIC DIVISION	
0	RELEASED.	01/29/16	52 RANKIN PLACE, WATERLOO, ONTARIO, N2J 3Z5		PH # (519) 886-6181 FAX # (519) 886-9540	
			DWG. BY: C. ILIE	CHK'D BY:	TITLE: AUDIO DRIVER TRANSFORMER	DWG. NO. 812
			DATE: 01/29/16	APP'D. BY:		
				DIMENSIONS: IN(X) MM( )		