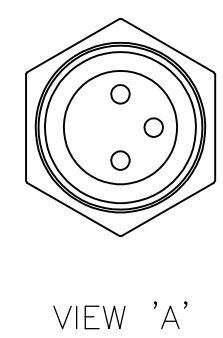
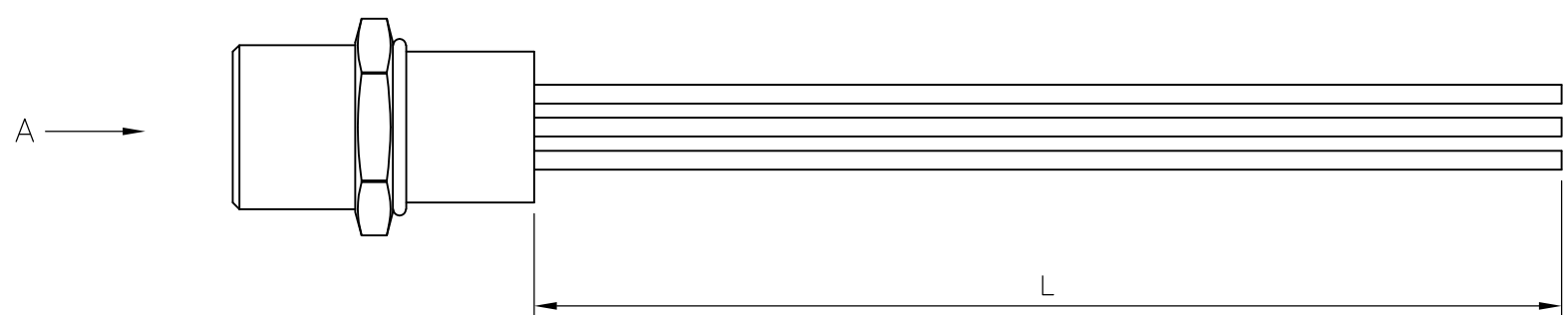


THIS DRAWING IS UNPUBLISHED. RELEASED FOR PUBLICATION
 © COPYRIGHT - By - ALL RIGHTS RESERVED.

LOC	DIST	REVISIONS					
		P	LTR	DESCRIPTION	DATE	DWN	APVD
H	-		A	INITIAL RELEASE	12NOV2013	GSK	BvH
			A1	ECR-15-003371	04MAR2015	GSK	BvH


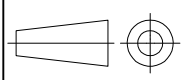
NOTES:
 Tolerances cable lengths:
 0m to 0.5m +30mm
 0.5m to 1.0m +50mm
 1.0m to 3.0m +100mm
 < 3.0m +1.5%



TECHNICAL DATA	
Operating voltage	max. 30 V AC/DC
Operating current per contact	max. 4 A
Locking of ports	Screw thread M8 x 1 mm (recommended torque 0.4 Nm) self-securing
Protection	IP65 and IP67 when plugged and screwed down (EN 60529)
Temperature range	-25...+85 °C

CABLE	
No./diameter of wires	3 x 0.25 mm ²
Wire isolation	PP (br, bk, bl) (UL/CSA)
Outer diameter	approx. 2.7 mm
Bend radius (moving)	10 x outer diameter
Temperature range (fixed)	-40...+80 °C

LENGTH "L"	TE PN	DESCRIPTION	ITEM
3 pos	0.2mtr	2273013-1 3X22AWG PANELMOUNT 0.2m WIRES	1

THIS DRAWING IS A CONTROLLED DOCUMENT.		DWN 12NOV2013 SATHISH KUMAR .G	 TE Connectivity	
DIMENSIONS: mm		CHK 12NOV2013 B.VELDHOVEN		
		APVD 12NOV2013 A.VAN ZANDVOORT	NAME M8 FEMALE PANEL MLD REAR MT M8 3POS	
TOLERANCES UNLESS OTHERWISE SPECIFIED:		PRODUCT SPEC 108-19483	RESTRICTED TO	
0 PLC ± -		APPLICATION SPEC 114-32127	SIZE	CAGE CODE
1 PLC ± -		WEIGHT	A3	00779
2 PLC ± -		CUSTOMER DRAWING	DRAWING NO G-2273013	
3 PLC ± -			SCALE	SHEET
4 PLC ± -			NTS	1 OF 1
ANGLES ± -			REV	A1
MATERIAL				
FINISH				