

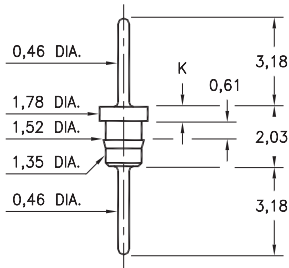
MALE PCB PINS

PRINTED CIRCUIT PINS

1752/6458

XXXX-0-00-XX-00-00-03-0

Press-fit in 1,45 mounting hole

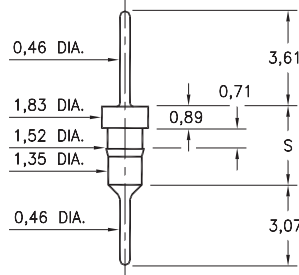


Basic Part Number	Length K
1752-0	0,51
6458-0	0,89

3413/8404

X4XX-0-00-XX-00-00-03-0

Press-fit in 1,45 mounting hole

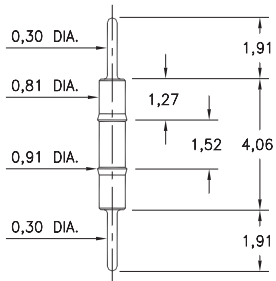


Basic Part Number	Length S
3413-0	3,0
8404-0	3,33

9075

9075-0-00-XX-00-00-03-0

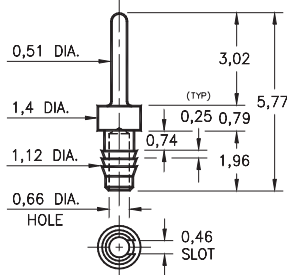
Press-fit in 0,86 mounting hole



2617

2617-0-01-XX-00-00-03-0

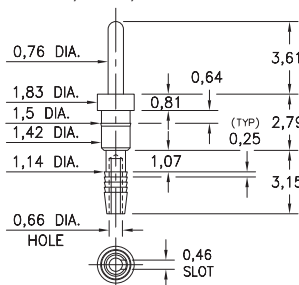
Compliant press-fit in 1,02 ± 0,08 plated hole. For 1,52 → 2,54 thick board



5607

5607-0-01-XX-00-00-03-0

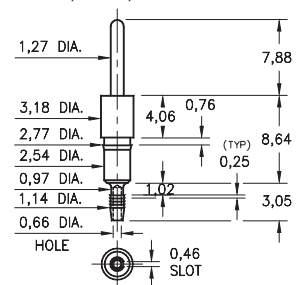
Compliant press-fit in 1,02 ± 0,08 plated hole. For 1,52 → 2,54 thick board



8995

8995-0-01-XX-00-00-03-0

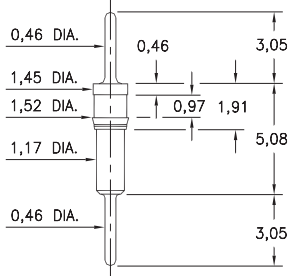
Compliant press-fit in 1,02 ± 0,08 plated hole. For 1,52 → 2,54 thick board



9218

9218-0-00-XX-00-00-03-0

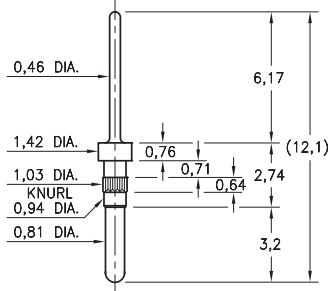
Press-fit in 1,45 mounting hole



5065

5065-0-00-26-00-00-03-0

Press-fit in 0,94 mounting hole



SPECIFICATIONS:

Pin Material: Brass Alloy 360, 1/2 Hard
(Except where noted)

Dimensions: Millimeters

Tolerances On: Lengths: ± 0,13
Diameters: ± 0,051
Angles: ± 2°



ORDER CODE: **XXXX - X - 0X - XX - 00 - 00 - 03 - 0**

BASIC PART #

SPECIFY PIN FINISH:

- 01 5,08µm TIN/LEAD OVER NICKEL
- ◆ 80 5,08µm TIN OVER NICKEL (RoHS)
- ◆ 15 0,25µm GOLD OVER NICKEL (RoHS)
- ◆ 21 0,51µm GOLD OVER NICKEL (RoHS)
- ◆ 34 1,27µm GOLD OVER NICKEL (RoHS)

