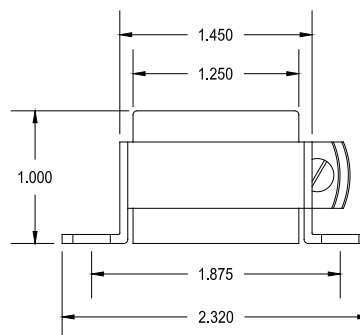
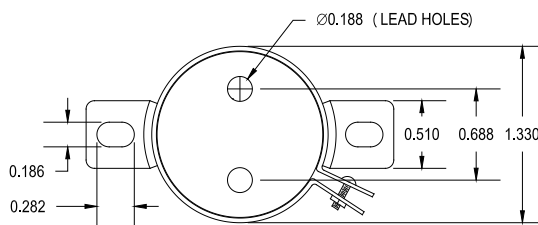


140QEX

CHASSIS MOUNT – SHIELDED
IMPEDANCE MATCHING TRANSFORMER

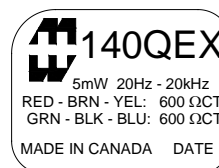
This transformer operates in the 20 Hz to 20 KHz range. The metal can provides excellent shielding from a broad range of external sources. While the nickel core provides high permeability combined with low losses.

Typical applications Input/output Isolation, Line Matching, Driver, Hybrid applications.

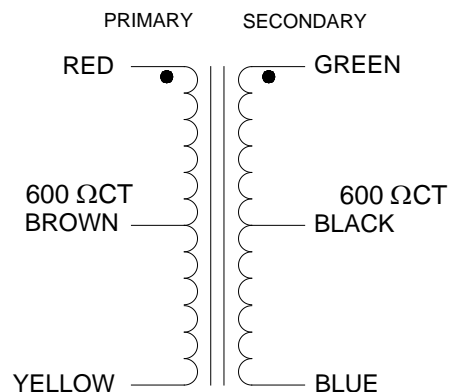


ELECTRICAL SPECIFICATIONS

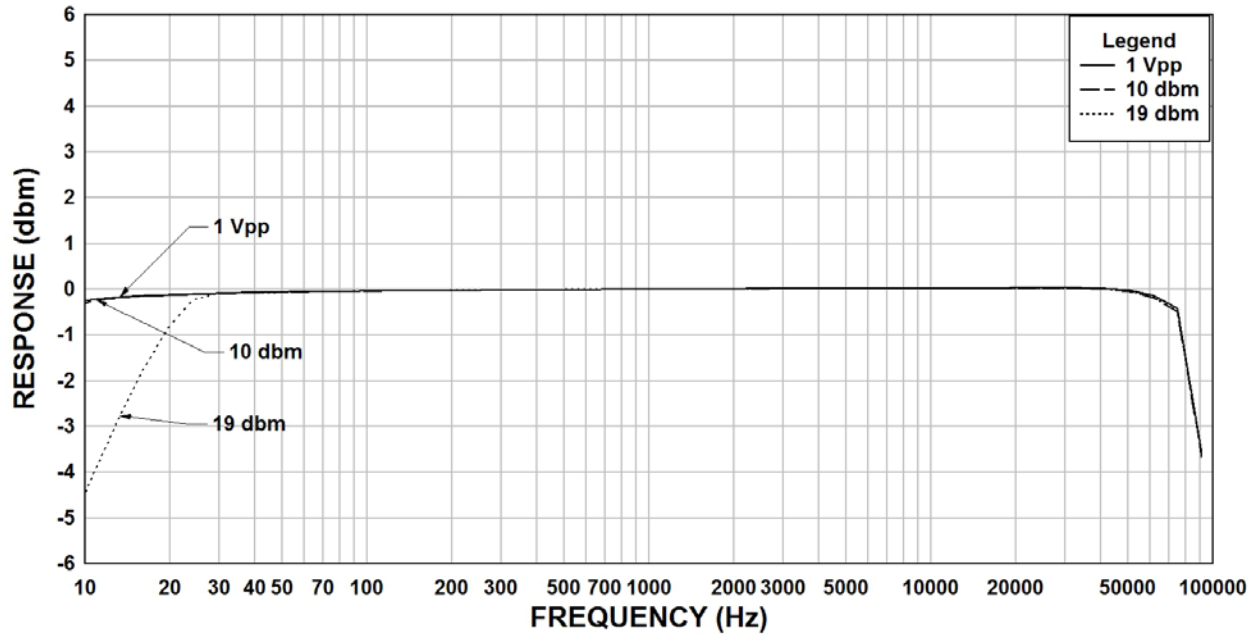
Characteristic	Typical
Input Impedance	600 Ω CT
Output Impedance	600 Ω CT
Output Power	10.0 dbm
DCR	
Primary	72.4 Ω
RED – BRN	36.2 Ω
BRN – YEL	36.2 Ω
Secondary	72.4 Ω
GRN – BLK	36.2 Ω
BLK – BLU	36.2 Ω
Inductance	@ 1.0 kHz, 1.0 V OC
Primary	10.62 H
Secondary	10.62 H
Impedance	@ 1.0 kHz, 1.0 V OC
Primary	64.5k Ω
Secondary	64.5k Ω
Frequency Response	± 1 db from 20 Hz to 20KHz
Turns ratio	1:1
Insertion Loss	< 1.1 db
Return Loss	20 db
Longitudinal balance	-65 db
Dielectric Strength	500 Vrms



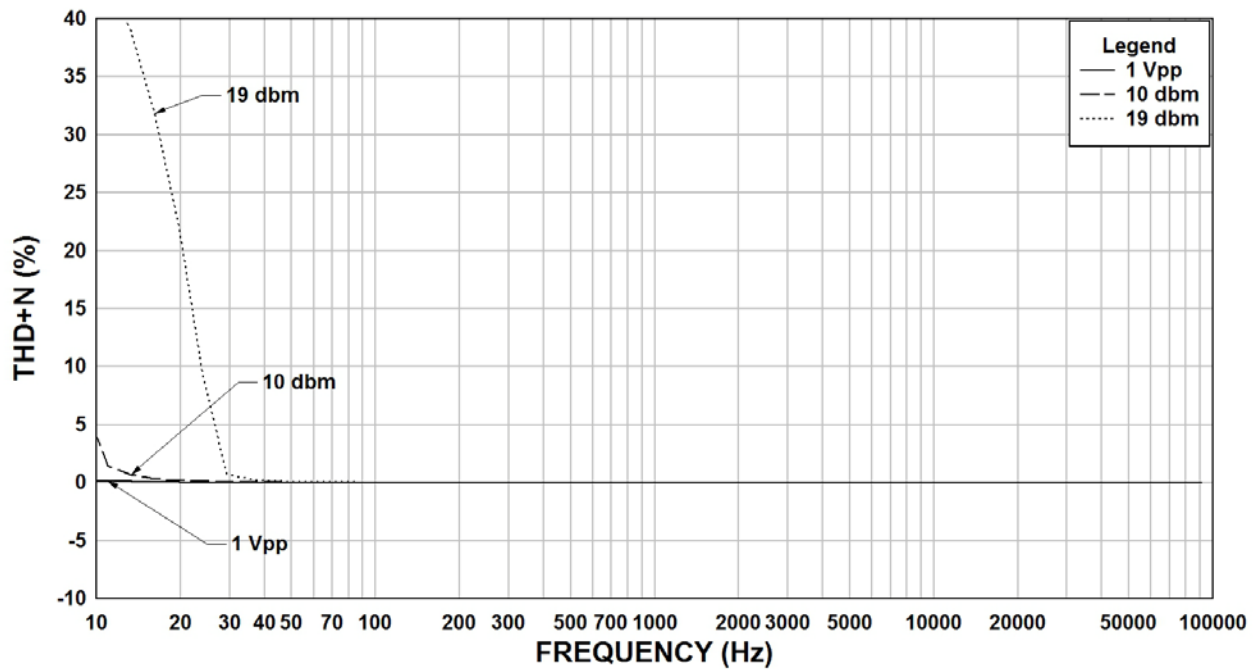
SCHEMATIC DIAGRAM



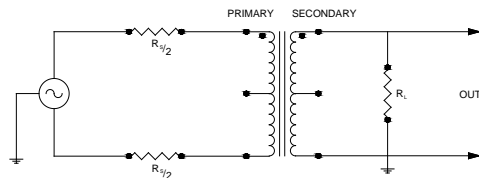
140QEX Rs=600, RI=600 Frequency Response



140QEX Rs=600, RI=600 THD+N



TYPICAL TEST CIRCUIT



Measurement instruments
 Hp4192a impedance analyzer
 Hp3456a DVM
 Keithley 2002 DVM
 D scope series iii audio analyzer

This drawing and the information in it is the property of Hammond Manufacturing. It may not be reproduced, transmitted or used in any manner whatsoever without the written permission of Hammond Manufacturing. Data subject to change without notice.