

Technical specification:

Rated voltage: 30V
IEC 61076-2-101

Current rating: 1,5 A at 40°C
IEC 61076-2-101

Insulation resistance: >=100 MΩ
IEC 60512

Pollution degree: 3/2
IEC 60664-1

Degree of protection: IP 67, in mated condition
IEC 60529

Temperature range: -30°C ... +80°C
EN 60512-11-10
-40°C ... +85°C
EN 60512-11-4

Mating cycles: >=100
IEC 60512-9a

Wire specification:

Temperatur range static: -30°C ... +80°C
flexibel: -5°C ... +80°C

Materials:

Contact: CuZn, Ni b / Au 0,2 gal.

Contact carrier: PBT GF, UL 94 HB

Sealing: FPM / NBR

Socket housing: CuZn, nickel plated

Grouting: Polyurethane-resin, UL 94

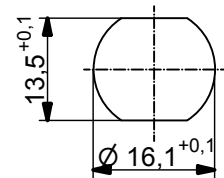
Installation specification:

Recommended torque: 1-1,2 Nm

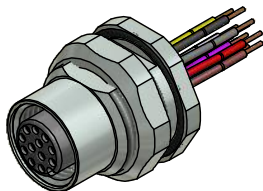
Conec installation tool: Torque wrench: 36-000200
Insert across flats 19: 36-000250

Contact assignment:

- | | |
|-----------|---------------|
| 1) brown | 7) black |
| 2) blue | 8) grey |
| 3) white | 9) red |
| 4) green | 10) violet |
| 5) pink | 11) grey-pink |
| 6) yellow | 12) red-blue |



Minimum wall thickness 1,5mm, alternativ panel cut-out d=16,1



Part no:	Description:	Pos	Length L:	Wire:
43-01343	SAL - 12 - FKH12 - 0,5	12	0,5m	AWG 26 PVC, UL
43-15609	SAL - 12 - FKH12 - 2	12	2m	
43-02804	SAL - 12 - FKH12 - 3	12	3m	
43-xxxxx	SAL - 12 - FKH12 - ...	12	x	

DO NOT ALTER CAD DRAWING BY HAND RoHS & REACH compliant	Index: d 08.09.15 Wil Ä5806 Data sheet revised, technical specification changed, part numbers added	dim. in mm	title: Female socket M12x1 with wire, backmounting		
	tolerance of wire: L <= 4m: L + 40mm L > 4m: L + 1%		date	name	dwg no: 43K1A775
	general tolerance: 0 ± 0,50mm 0,0 ± 0,25mm 0,00 ± 0,10mm x ± 1,5°	drawn	16.10.08	Fromm	
		appd.	16.10.08	Mankopf	
THIS DRAWING MAY NOT BE COPIED OR REPRODUCED IN ANY WAY, AND MAY NOT BE PASSED ON TO A THIRD PARTY WITHOUT WRITTEN PERMISSION. OWNERSHIP AND COPYRIGHT OF CONEC GmbH					