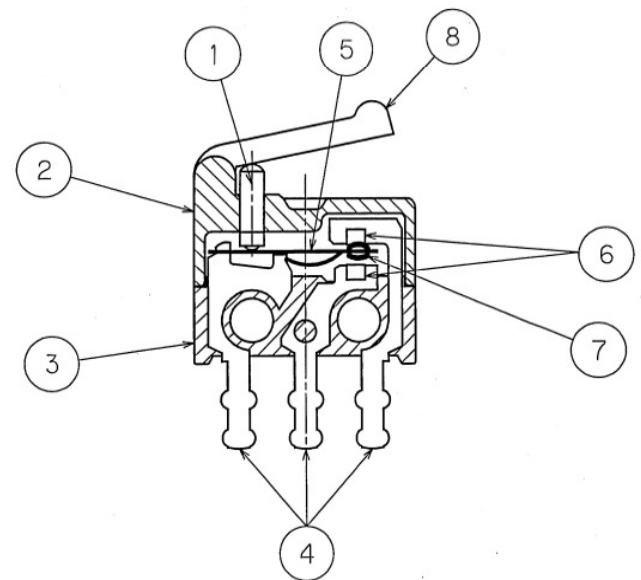
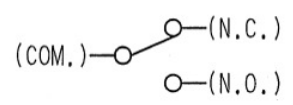


NO	NAME	MATERIAL	Qty
1	BUTTON	PBTP UL94V-0	1
2	COVER	PBTP UL94V-0	1
3	BASE UNIT	PPHS UL94V-0	1
4	BRACKET (COM, NC, NO)	BRASS(SILVER PLATED)	1
5	BLADE	BERYLLIUM COPPER	1
6	STATIONARY CONTACTS	SILVER ALLOY(GOLD FLASHED)	2
7	MOVABLE CONTACTS	SILVER ALLOY(GOLD FLASHED)	1
8	ACTUATOR	PBTP UL94V-0	1



CONSTRUCTION

Note.1. Tolerance; unless otherwise specified ±0.2mm



CIRCUITRY

<b>PRELIMINARY</b>				DWN	CKD	APP	2005. 10. 21 Engineering Dept.
				M.Abe			
ECN-65761	21-10-'05			SCALE	UNITS	PROJ	DIVISION GEOO
2nd Edition	21-10-'05			×	mm	3RD	
REVISE	DATE	REVISE	DATE	<b>CHERRY</b>			
Title	MICRO SWITCH	Part No.	DH2C-B1PA	DWG No.		303631	