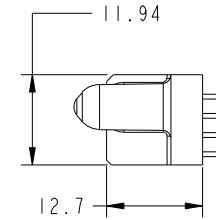
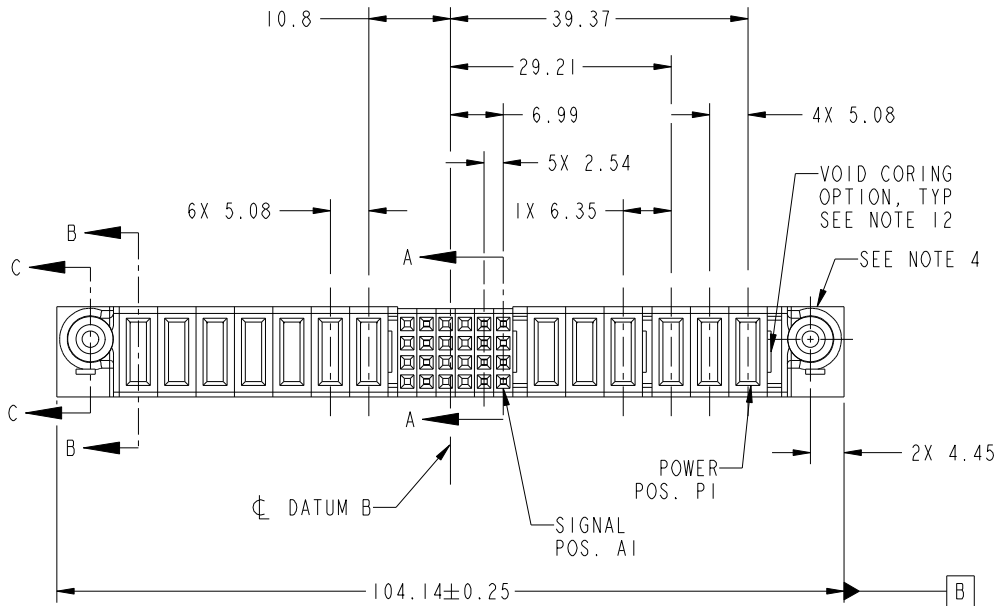


Tous droits strictement réservés. Reproduction ou communication a des tiers interdite sous quelque forme que ce soit sans autorisation écrite du propriétaire. Propriété de c.FCI. Droits de reproduction FCI.

All rights strictly reserved. Reproduction or issue to third parties in any form whatever is not permitted without written authority from the proprietor. Property of FCI. Copyright FCI.



PRODUCT NO.	ROWS	POWER						SIGNAL					POWER					E1				
		E2	P13	P12	P11	P10	P9	P8	P7	6	5	4	3	2	1	P6	P5		P4	P3	P2	P1
51940-257-- NOTE: 3	D C B A		PA	X	PA	X	PA	X	PA	X	X	X	X	X	X	X	X	X	X	X	X	



CODE	DIM "M" MATING LENGTH	CONTACT TYPE
E	[N/A]	SIGNAL
PA	[1.07]	POWER
X	OMITTED	

mat'l code				SEE NOTES		tolerances unless otherwise specified		CUSTOMER		 www.fciconnect.com	
lir	ecn no.	dr	date	linear		0.X ±0.5		COPY		title	
A	DG08-0212	W D	08/08/08	angles		0.XX ±0.25		projection		6P + 24S + 7P	
						0.XXX ±0.1				VERTICAL SOLDER RECEPT	
						0° ±2°				product family	
				dr		Warren Du 07/10/08		MM		PwrBlade	
				enrg		Jerome Chen 07/10/08		scale		code	
				chr		Gary Hsieh 07/10/08		1:1		213	
				appd		Joseph Hsia 07/10/08				sheet	
sheet index	revision sheet	A	A	A	A					1 of 4	
		1	2	3	4					cage code	
										2256	

B

B

1 | 2

Pro/E

PDM: Rev: A

STATUS: Released

Printed: Dec 20, 2010

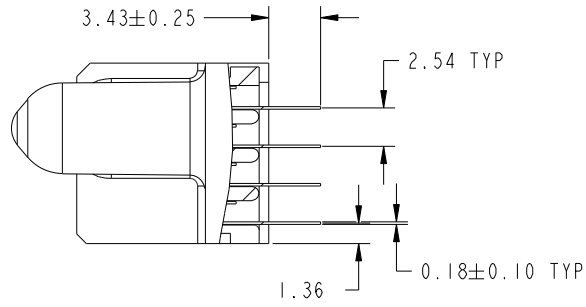
Tous droits strictement reserves. Reproduction ou communication a des tiers interdite sous quelque forme que ce soit sans autorisation ecrite du proprietaire. Propriete de c FCI. Droits de reproduction FCI.

All rights strictly reserved. Reproduction or issue to third parties in any form whatever is not permitted without written authority from the proprietor. Property of FCI. Copyright FCI.

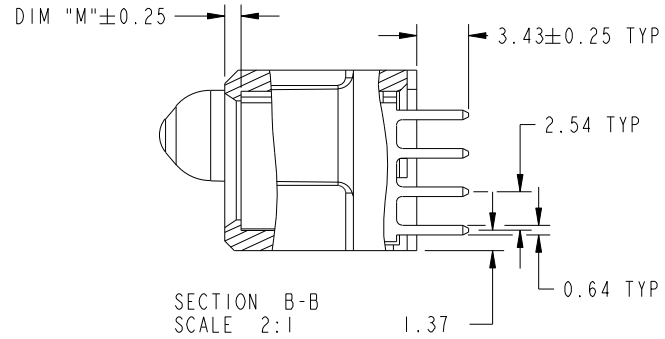


PRODUCT NUMBER

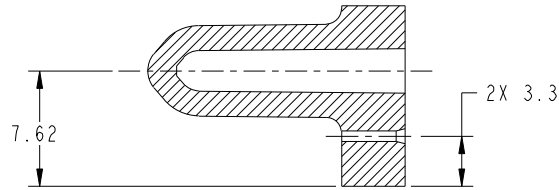
51940-257__
NOTE: 3



SECTION A-A
SCALE 2:1



SECTION B-B
SCALE 2:1



SECTION C-C
SCALE 2:1

mat'l code				tolerances unless otherwise specified		CUSTOMER		 www.fciconnect.com			
lfr	ecn no.	dr	date	linear	0.X ±0.5	projection		title			
A					0.XX ±0.25			6P + 24S + 7P		code	
					0.XXX ±0.1			VERTICAL SOLDER RECEPT		213	
				angles	0° ±2°	 MM 1:1	product family		sheet		
				dr	Warren Du 07/10/08		PwrBlade		2 of 4		
				enrg	Jerome Chen 07/10/08		size	dwg no	A 51940-257		
				chr	Gary Hsieh 07/10/08						
				appd	Joseph Hsia 07/10/08						
sheet index	revision sheet										

cage code 2856

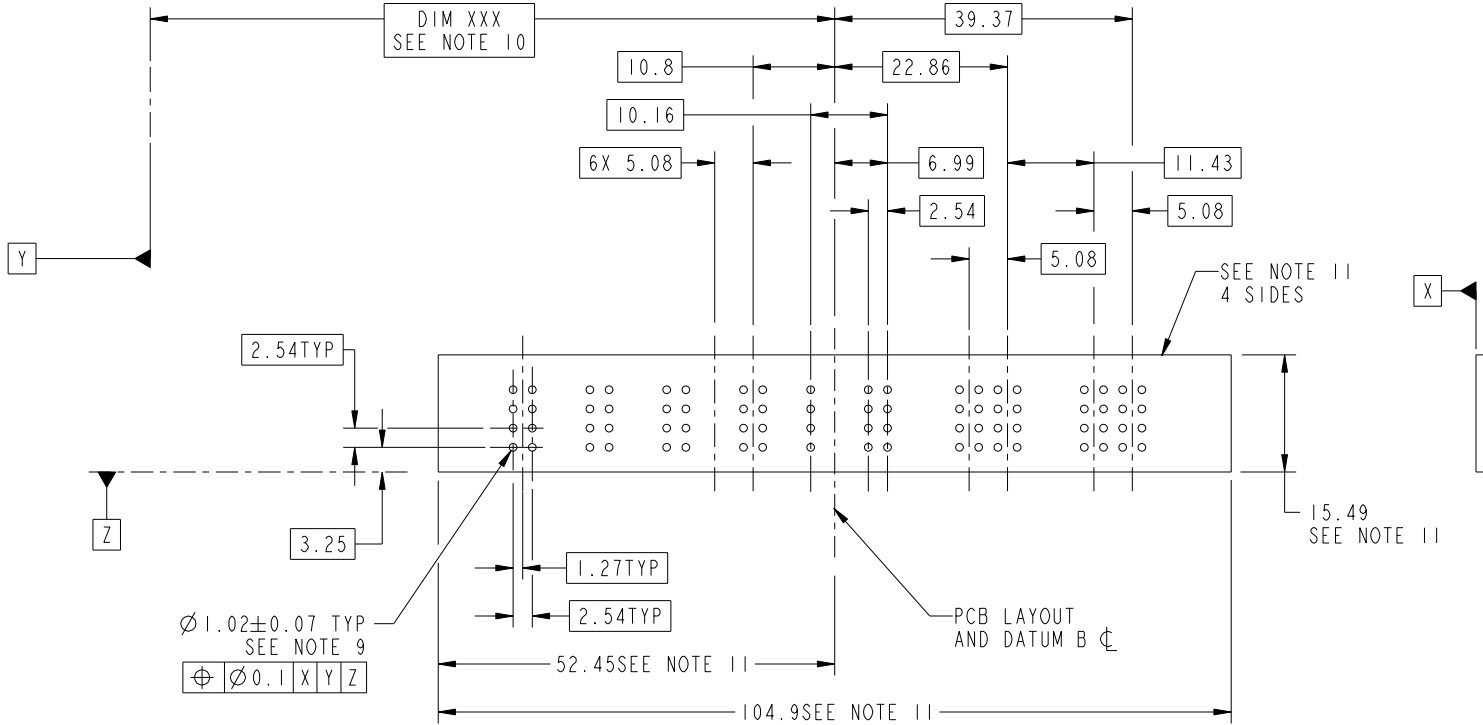
Tous droits strictement reserves. Reproduction ou communication a des tiers interdite sous quelque forme que ce soit sans autorisation ecrite du proprietaire. Propriete de c.FCI. Droits de reproduction FCI.

All rights strictly reserved. Reproduction or issue to third parties in any form whatever is not permitted without written authority from the proprietor. Property of FCI. Copyright FCI.



PRODUCT NUMBER

51940-257__
NOTE: 3



mat'l code				tolerances unless otherwise specified		CUSTOMER		 www.fciconnect.com		
lir	ecn no.	dr	date	linear	0.X ±0.5		COPY		title 6P + 24S + 7P VERTICAL SOLDER RECEPT	
A					0.XX ±0.25		projection			
					0.XXX ±0.1					
				angles	0° ±2°		 MM		product family PwrBlade	
				dr	Warren Du	07/10/08	size A			code 213 sheet 3 of 4
				enrg	Jerome Chen	07/10/08	dwg no 51940-257			
				chr	Gary Hsieh	07/10/08				
				appd	Joseph Hsia	07/10/08				
sheet index	revision sheet									

Tous droits strictement reserves. Reproduction ou communication a des tiers interdite sous quelque forme que ce soit sans autorisation ecrite du proprietaire. Propriete de c FCI. Droits de reproduction FCI.

All rights strictly reserved. Reproduction or issue to third parties in any form whatever is not permitted without written authority from the proprietor. Property of FCI. Copyright FCI.



1 | 2

3

4

PRODUCT NUMBER

51940-257__
NOTE: 3

NOTES:

1. DIMENSIONS AND TOLERANCES ARE IN ACCORDANCE WITH ASME Y14.5M, 1994 UNLESS OTHERWISE SPECIFIED.

CONNECTOR NOTES:

- ② HOUSING MATERIAL: UL 94 V-0 GLASS FILLED HIGH-TEMP THERMOPLASTIC
POWER CONTACT MATERIAL: COPPER ALLOY
SIGNAL PIN MATERIAL: COPPER ALLOY
- 3. PLATING SPEC.
51940-257, 51940-257LF PLATING SPEC. WAS SHOWN IN THE PRINT OF 10064183.
- ④ MANUFACTURER'S NAME, P/N, AND DATE CODE TO APPEAR ON THIS SURFACE.
- 5. PRODUCT SPECIFICATION GS-12-149.
APPLICATION SPECIFICATION BUS-20-067.
- 6. PACKAGED IN TRAYS.

PCB NOTES:

- 7. ALL HOLE DIAMETERS ARE FINISHED HOLE SIZE.
- ⑧ MOUNTING HOLES, WHERE APPLICABLE, ARE UNPLATED.
- ⑨ $\varnothing 1.151 \pm 0.025$ DRILLED HOLES PLATED WITH
0.008 MIN SnPb OR Sn OVER 0.03
TO 0.08 Cu PLATING TO ACHIEVE
 $\varnothing 1.02 \pm 0.07$ HOLE.
- ⑩ "DIM XXX" TO BE DETERMINED BY THE CUSTOMER.
- ⑪ CONNECTOR KEEP-OUT ZONE.
- 12. THE VOID CORING IN BETWEEN POWER MODULES, SIGNAL MODULES AND END MODULES ARE OPTIONAL AND THE SHAPE MAY BE DIFFERENT FOR OPTIMIZE THE MOLDING PROCESS. THE VOID CORING WILL NOT EFFECT TO PRODUCT FUNCTION.

mat'l code				tolerances unless otherwise specified		CUSTOMER		 www.fciconnect.com		
ltr	ecn no.	dr	date	linear	0.X ± 0.5		COPY		title 6P + 24S + 7P VERTICAL SOLDER RECEPT	
A					0.XX ± 0.25		projection			
					0.XXX ± 0.1					
				angles	0° ± 2°				product family PwrBlade	
				dr	Warren Du	07/10/08	size A			code 213
				enrg	Jerome Chen	07/10/08	dwg no 51940-257			sheet 4 of 4
				chr	Gary Hsieh	07/10/08	scale 1:1			
				appd	Joseph Hsia	07/10/08				
sheet index	revision sheet									

1 | 2

Pro/E

PDM: Rev: A

STATUS: Released

Printed: Dec 20, 2010

cage code 2856

4