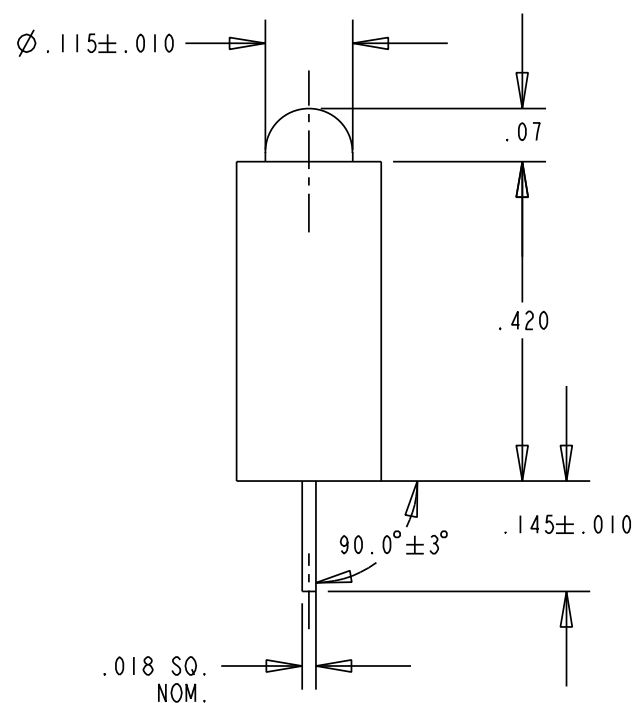
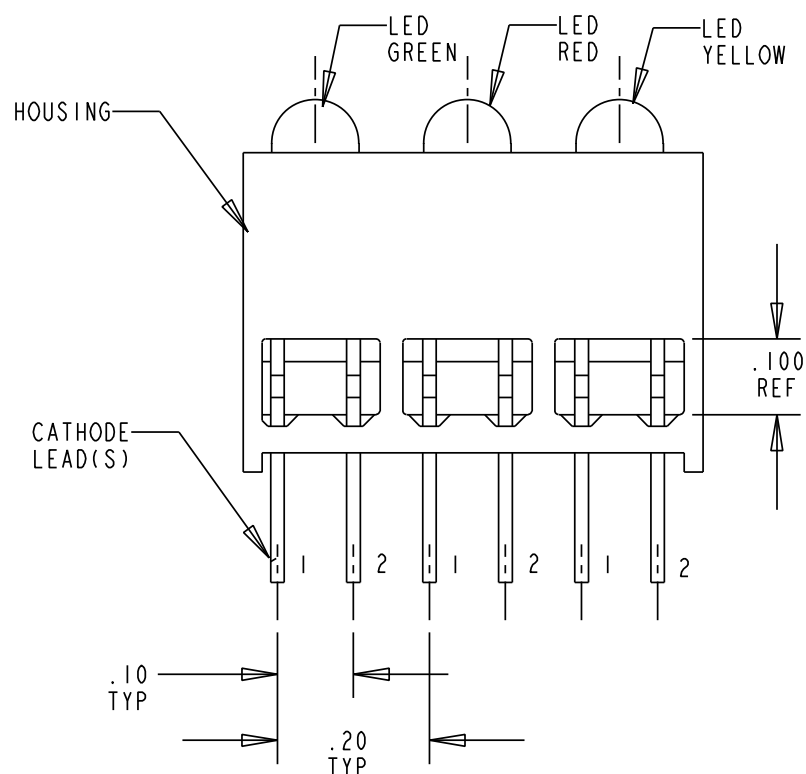
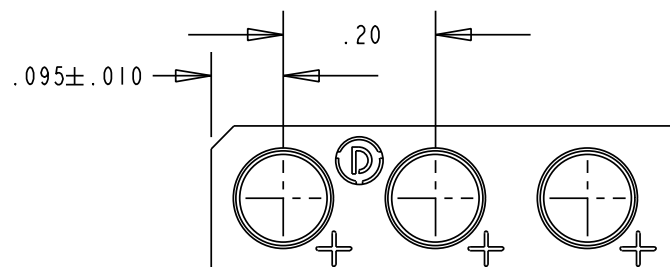


OPERATING CHARACTERISTICS AT T_A = 25°C

| REV | ECN NO | REVISIONS | DRN | CKD | APP | DATE |
|-----|--------|-------------|-----|-----|-----|------|
| A | — | NEW RELEASE | TWC | | | |

| DIFFUSED LENS COLOR | PEAK EMISSION WAVELENGTH (nm) | VIEWING ANGLE (°) 2 Ø 1/2 | CAPACITANCE (pF); @ V _f = 0; f = 1MHz | | LUMINOUS INTENSITY (mcd) @ I _f = 10 mA; 25°C | | FORWARD VOLTAGE (V) @ I _f = 20 mA; 25°C | | REVERSE CURRENT (µA); 25°C |
|---------------------|-------------------------------|------------------------------|--|------|---|------|--|----------------------------|----------------------------|
| | | | TYP. | MIN. | TYP. | TYP. | MAX. | MAX. | |
| RED | 635 | 60 | 20 | 7.4 | 10.0 | 2.0 | 2.8 | 100 @ V _R = 5 V | |
| GREEN | 565 | 60 | 35 | 4.7 | 12.6 | 2.1 | 2.8 | 100 @ V _R = 5 V | |
| YELLOW | 585 | 60 | 15 | 7.4 | 10.0 | 2.1 | 2.8 | 100 @ V _R = 5 V | |

| ABSOLUTE MAXIMUM RATINGS AT 25° C AMBIENT | RED | GREEN | YELLOW | UNITS |
|--|-----------------|-------|--------|-------|
| POWER DISSIPATION | 100 | 100 | 60 | mW |
| CONTINUOUS FORWARD CURRENT | 30 | 30 | 20 | mA |
| PEAK FORWARD CURRENT (1/10 DUTY CYCLE, 0.1 ms PULSE WIDTH) | 120 | 120 | 80 | mA |
| DERATING LINEAR FROM 50° C | 0.4 | 0.4 | 0.25 | mA/°C |
| REVERSE VOLTAGE | 5 | | | V |
| SOLDERING TEMPERATURE (.063/(1.60) FROM BODY | 260°C FOR 5 SEC | | | °C |
| OPERATING TEMPERATURE | -55 TO +100 | | | °C |
| STORAGE TEMPERATURE | -55 TO +100 | | | °C |

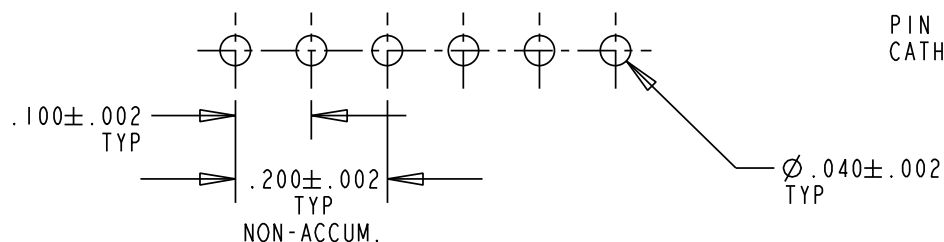


NOTES:

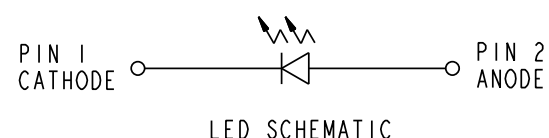
- LEADS TO FIT INTO HOLES SPACED AS PER PATTERN.
- LED LEAD DIMENSIONS SHOWN ARE MEASURED AT HOUSING EXIT.
- PIN NUMBERS FOR REFERENCE ONLY, DESIGNATION IS NON-EXISTENT ON PARTS.
- PACKAGE 50 PC'S PER ANTISTATIC AUTOBAG WITH P/N, QTY, DATE CODE AND MFG. PRINTED ON BAG.
- DIALIGHT PART NUMBER: 562-0003-801F
- THIS ASSEMBLY CONTAINS ELECTROSTATIC DISCHARGE SENSITIVE DEVICES (ESDS). MAINTAIN ALL PRECAUTIONARY MEASURES DURING ASSEMBLY, HANDLING AND STORAGE IN ACCORDANCE WITH IPC-A-610.

RoHS Compliant 562-0003-801F

Part Numbers with the "F" suffix ending are RoHS Compliant. Packaging is marked with "RoHS Compliant" label or equivalent markings. Parts can be wave soldered, dip soldered or hand soldered using typical lead-free soldering process with max 260°C temp. for 5 sec.



RECOMMENDED PC BOARD HOLE PATTERN



ATTENTION:
OBSERVE PRECAUTIONS FOR
HANDLING ELECTROSTATIC
SENSITIVE DEVICES

| | | |
|---|--|----------|
| THIS DRAWING AND THE CONTENTS HEREIN ARE CONFIDENTIAL AND THE SOLE PROPERTY OF DIALIGHT. REPRODUCTION OF THIS DRAWING OR CONSTRUCTION OF ANY PARTS WITHIN THIS DRAWING ARE FORBIDDEN WITHOUT THE WRITTEN CONSENT OF DIALIGHT. | | |
| SCALE: DRAWING SCALE ALL DIM'S IN: INCHES (MM) | DRAWING NUMBER C-17368 | REV A |
| TOLERANCES: UNLESS OTHERWISE SPECIFIED FRACTIONS: ±1/64 DECIMALS (.XX): ±.01 DECIMALS (.XXX): ±.005 DECIMALS (.XXXX): ±.0005 ANGLES: ±1° | TITLE 3XI CBI RoHS COMPLIANT | |
| FINISH: | MATERIAL | |
| FSCM 83330 | Dialight 1501 ROUTE 34 SOUTH FARMINGDALE, NJ 07727 | |
| SHEET 1 OF 1 FAMILY TABLE: | | |