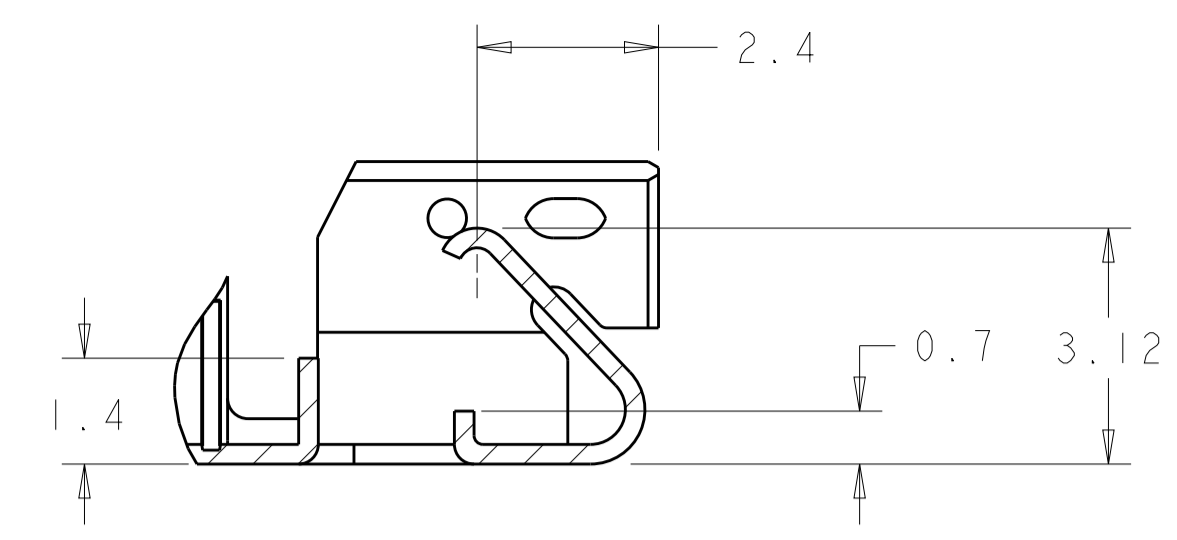
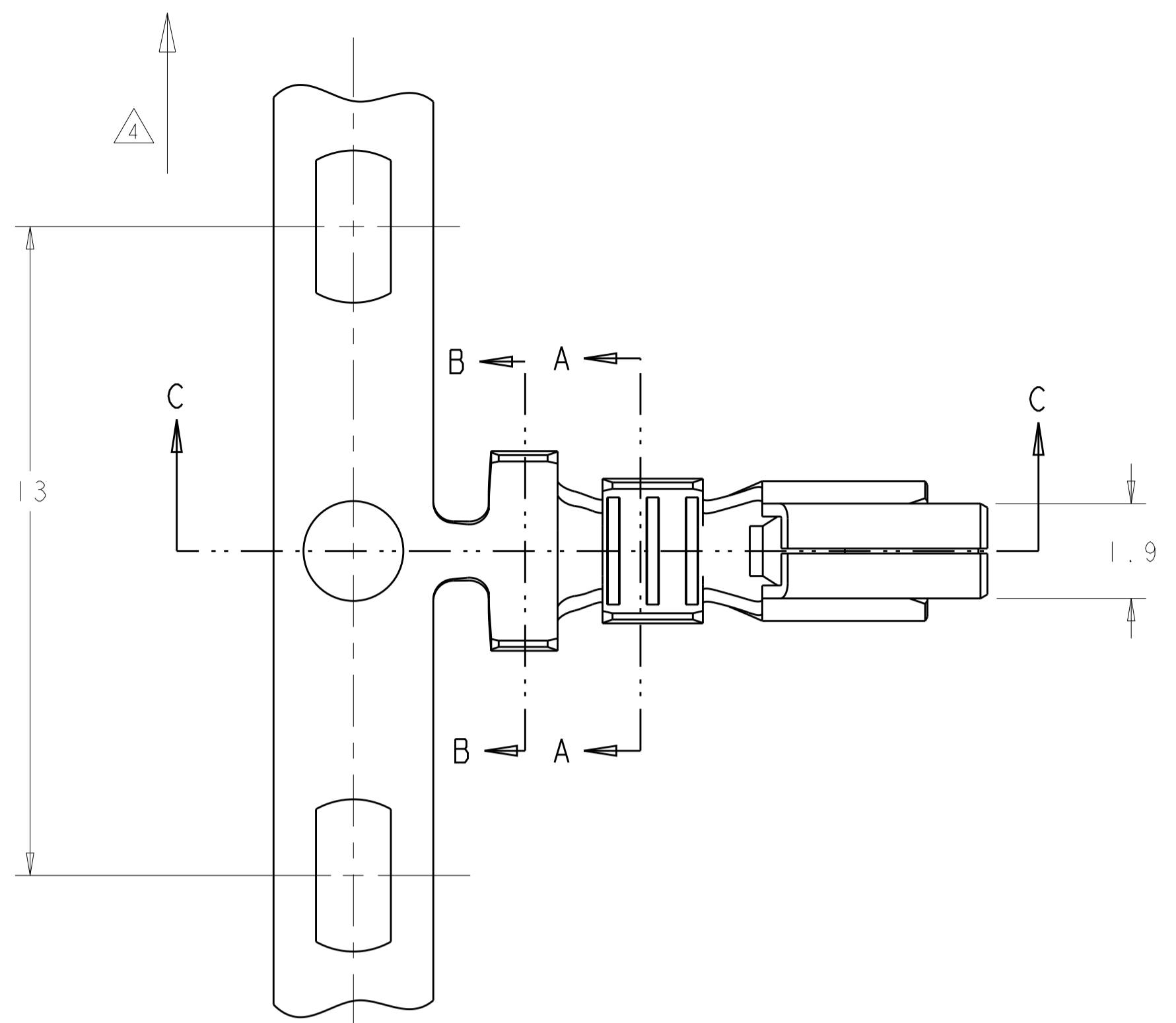
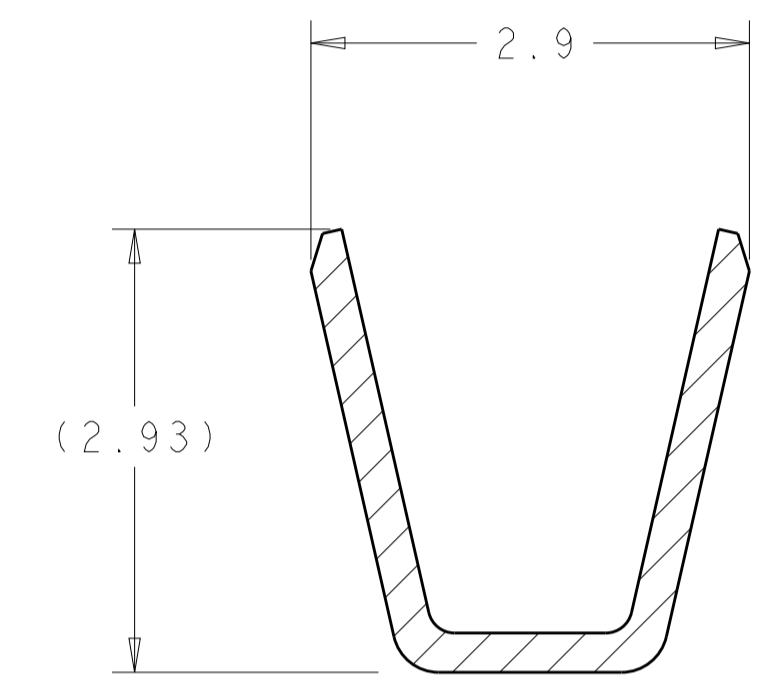


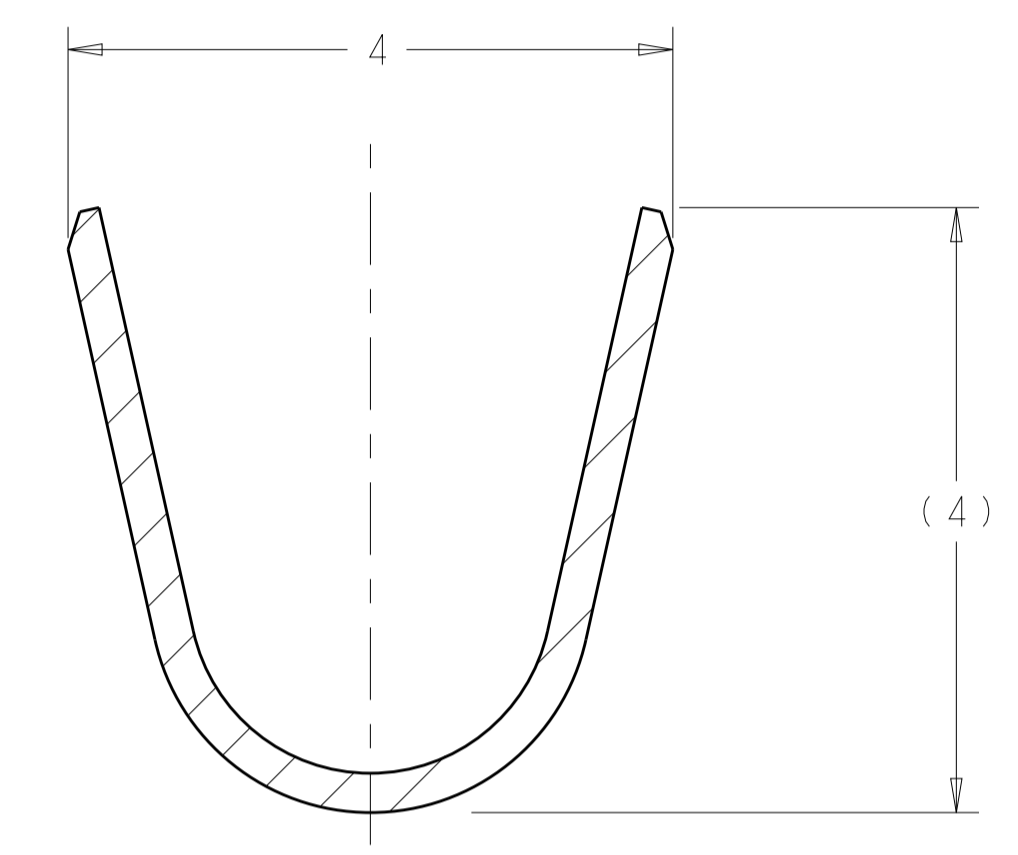
LOC	DIST	REVISIONS					
		P	LTN	DESCRIPTION	DATE	DWN	APVD
CM	00	B3		REVISED PER ECR-16-003704	12MAR2016	NK	DC



SECTION C-C

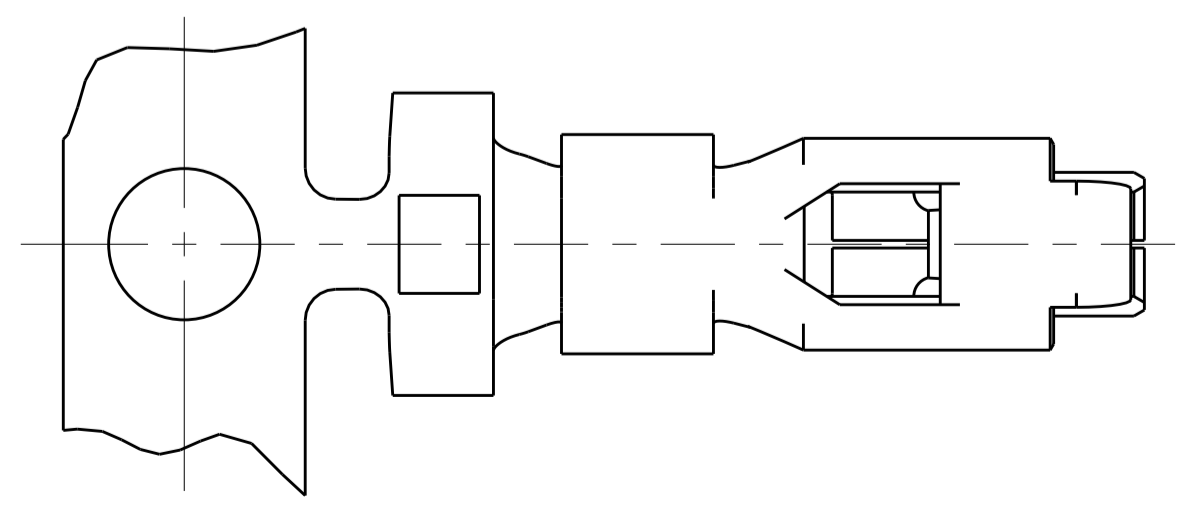
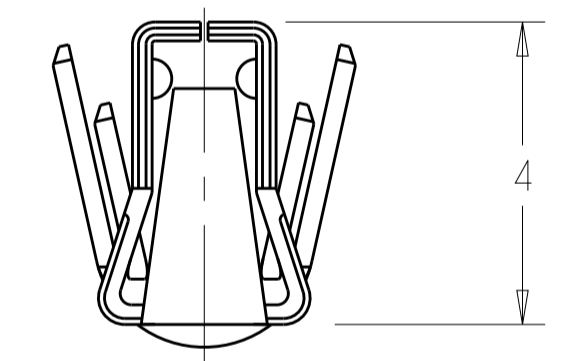
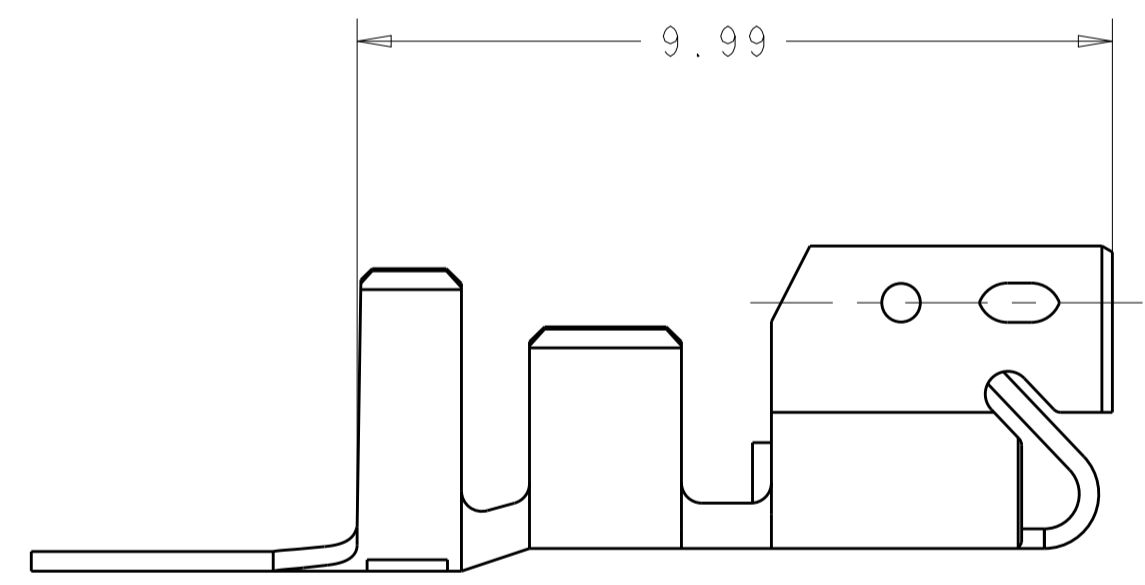


SECTION A-A
SCALE 20:1



SECTION B-B
SCALE 20:1

- △ FINISH: 0.8µM PRE-TIN OVER 0.5µM MIN COPPER.
- 2 WIRE RANGE: 20-16 AWG.
- 3 CONTACTS COATED WITH ANTI-FRETTING LUBRICANT.
- △ STRIP DIRECTION OFF TOP OF THE REEL, ACC. TO TE SPEC. 107-3 FIG. 1



△	PHOS BRONZE	1744201-1
FINISH	MATERIAL	PART NO

THIS DRAWING IS A CONTROLLED DOCUMENT.		DWN K. WHITAKER 05APR2005	NAME	
DIMENSIONS:		CHK J. ELLIS 05APR2005	CONTACT, LANCELESS, STD, ECONOMY POWER II	
TOLERANCES UNLESS OTHERWISE SPECIFIED:		APVD J. ELLIS 05APR2005	RESTRICTED TO	
mm	0 PLC ±	PRODUCT SPEC	SIZE CAGE CODE DRAWING NO	
	2 PLC ±	108-2297	A100779C=1744201	
	3 PLC ±.1	APPLICATION SPEC	SCALE 10:1 SHEET 1 OF 1 REV B3	
	4 PLC ±.15	114-13265		
	ANGLES ±°	WEIGHT		
MATERIAL SEE TABLE	FINISH SEE TABLE	CUSTOMER DRAWING		