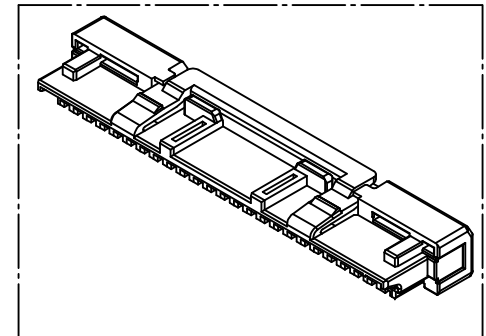
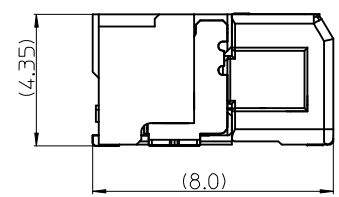
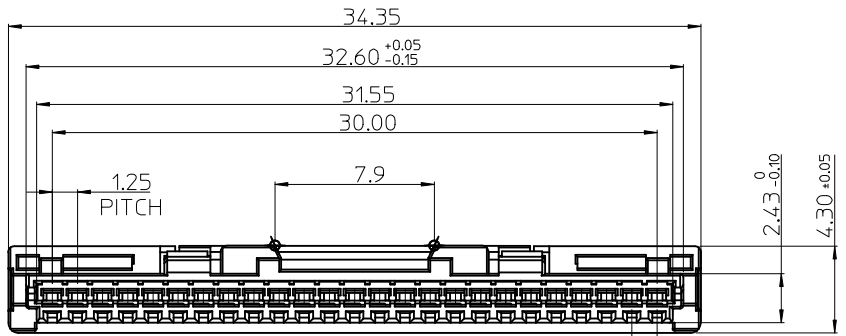


MATED WITH HEADER ASSEMBLY
[REFERENCE]

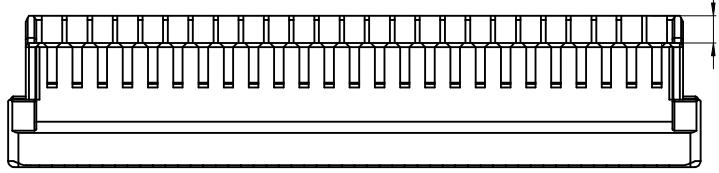
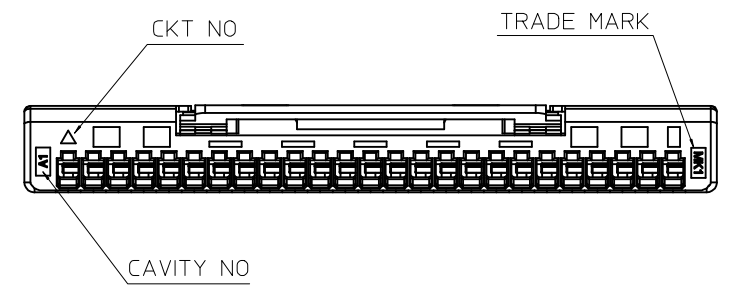
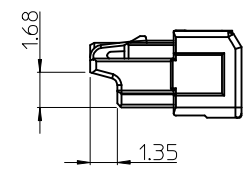


NOTES.

1. MATERIAL : LIQUID CRYSTAL POLYMER(LCP), GLASS FILLED, UL94 V-0, COLOR: NATURAL(IVORY)
2. PRODUCT SPECIFICATION : PS-104091-001
3. PACKAGING SPECIFICATION : PK-104091-001
4. MATED WITH :
HEADER ASS'Y: 104091-2520
TERMINAL : 502381-6001, 104521-6001



MATED WITH HEADER ASSEMBLY
[REFERENCE]



RELEASED
EC NO: KOR2012-0127
DRWN:SKCHU 2012/06/25
CHKD:SHCHU 2012/06/25
APPR:YSK1M02 2012/08/06

REV	DESCRIPTION
A	

QUALITY SYMBOLS	▽=0	
	∇=0	
	GENERAL TOLERANCES (UNLESS SPECIFIED)	
	mm	INCH
	4 PLACES	± --- ± ---
3 PLACES	± --- ± ---	
2 PLACES	± 0.15 ± ---	
1 PLACE	± 0.20 ± ---	
ANGULAR ± 1 °		
DRAFT WHERE APPLICABLE MUST REMAIN WITHIN DIMENSIONS		

DIMENSION STYLE		SCALE	DESIGN UNITS	THIRD ANGLE PROJECTION
MM ONLY		4/1	METRIC	☉ □
DRAWN BY	DATE	TITLE		
JHPARK	2011/04/11	1.25 WTB CONN. R/A -25P PLUG HOUSING		
CHECKED BY	DATE	MOLEX INCORPORATED		
SHCHU	2011/04/11	SD-104092-007		
APPROVED BY	DATE	SHEET NO.		
YSK1M02	2012/08/06	1 OF 1		
MATERIAL NO.	DOCUMENT NO.	THIS DRAWING CONTAINS INFORMATION THAT IS PROPRIETARY TO MOLEX INCORPORATED AND SHOULD NOT BE USED WITHOUT WRITTEN PERMISSION		
1040922500				
SIZE				
A3				

ORDER NO	104092-2500
MOLEX INCORPORATED	
SD-104092-007	
SHEET NO. 1 OF 1	