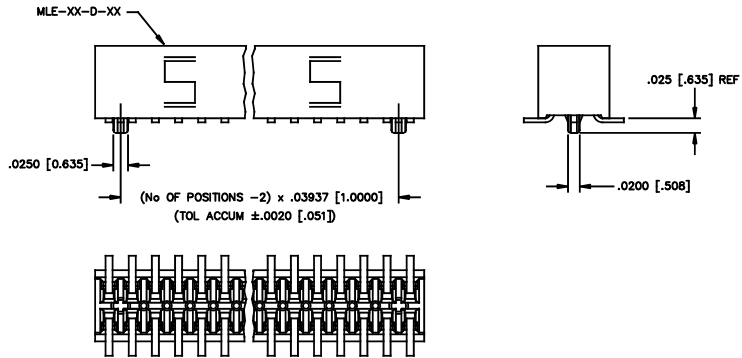


REV T

FIG 2

-A: OPTION  
MOLDED ALIGNMENT PIN (3 POS. MIN)  
(DIFFERENT AS SHOWN, OTHERWISE SAME AS FIG 1)



DIMENSIONS ARE IN INCHES UNLESS OTHERWISE NOTED TOLERANCES ARE:

ONE PLACE DECIMALS ± .1 [2.54] THREE PLACE DECIMALS ± .005 [.127] ANGLES ± 2°  
TWO PLACE DECIMALS ± .01 [.254] FOUR PLACE DECIMALS ± .0020 [.051]

TITLE: 1mm DUAL ROW STRIP ASSEMBLY

DWG NO: MLE-1XX-XX-X-DV-X  
SHEET 2 OF 3

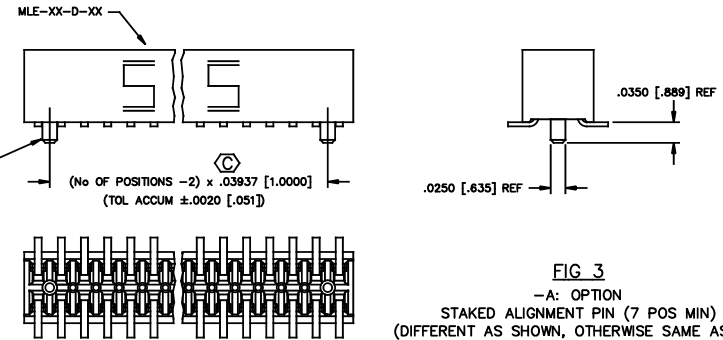
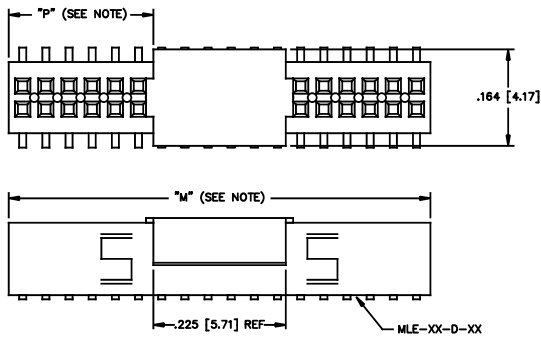


FIG 3

-A: OPTION  
STAKED ALIGNMENT PIN (7 POS MIN)  
(DIFFERENT AS SHOWN, OTHERWISE SAME AS FIG 1)

FIG 4

-P: OPTION  
PICK & PLACE PAD  
(DIFFERENT AS SHOWN, OTHERWISE SAME AS FIG 1)



NOTE: "M" = USED MEASURED DIMENSION (REF)  
"P" = ((M) - .225 [5.71])/2 ± .020 [.51]

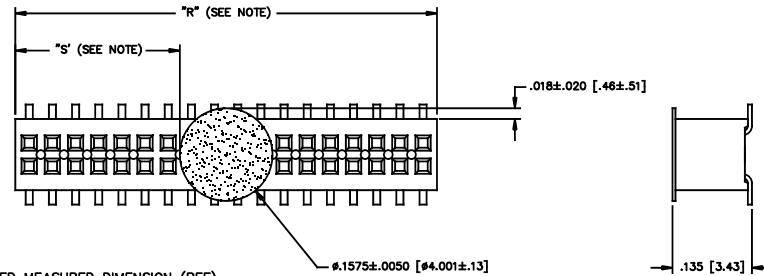
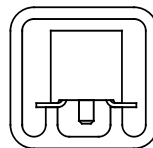


FIG 5  
-K: OPTION  
POLYAMIDE FILM PAD

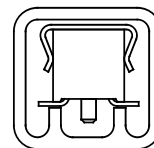
NOTE: "R" = USED MEASURED DIMENSION (REF)  
"S" = ((R) - .1575 [4.000]) / 2 ± .020 [.51]

PACKAGING VIEW  
SEE NOTE 4

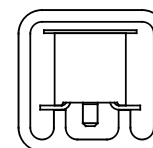
| OPTION        | TUBE          | PLUG  |
|---------------|---------------|-------|
| NO OPTION, -A |               |       |
| -K, -K-A      | PT-1-24-01-62 | TP-12 |
| -P, -P-A      |               |       |



PT-1-24-01-62



PT-1-24-01-62



PT-1-24-01-62

**\*PROPRIETARY NOTE\***  
THIS INFORMATION IS UNCLASSIFIED AND PUBLIC RELEASE UNDER E.O. 13526, DATE 08-14-2011. IT IS THE PROPERTY OF SAMTEC CORPORATION AND IS TO BE USED ONLY FOR THE PURPOSES AND IN ACCORDANCE WITH THE TERMS OF THE LICENSE AGREEMENT. ANY UNAUTHORIZED REPRODUCTION OR DISTRIBUTION IS STRICTLY PROHIBITED. SAMTEC CORPORATION, 520 PARK EAST BLVD., NEW ALBANY, INDIANA 47150. PHONE (812) 944-6733. P.O. BOX 1147, CODE 55322.

**samtec**

EXISPROD/ASSEMBLY/1MM  
MLE-ASM2

520 PARK EAST BLVD. NEW ALBANY, INDIANA 47150  
PHONE (812) 944-6733 P.O. BOX 1147  
CODE 55322

MADE BY: D PURVIS 01-07-97

MLE-1XX-XX-X-DV-X  
SHEET 2 OF 3