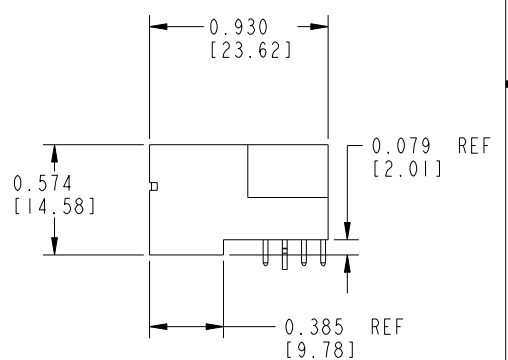
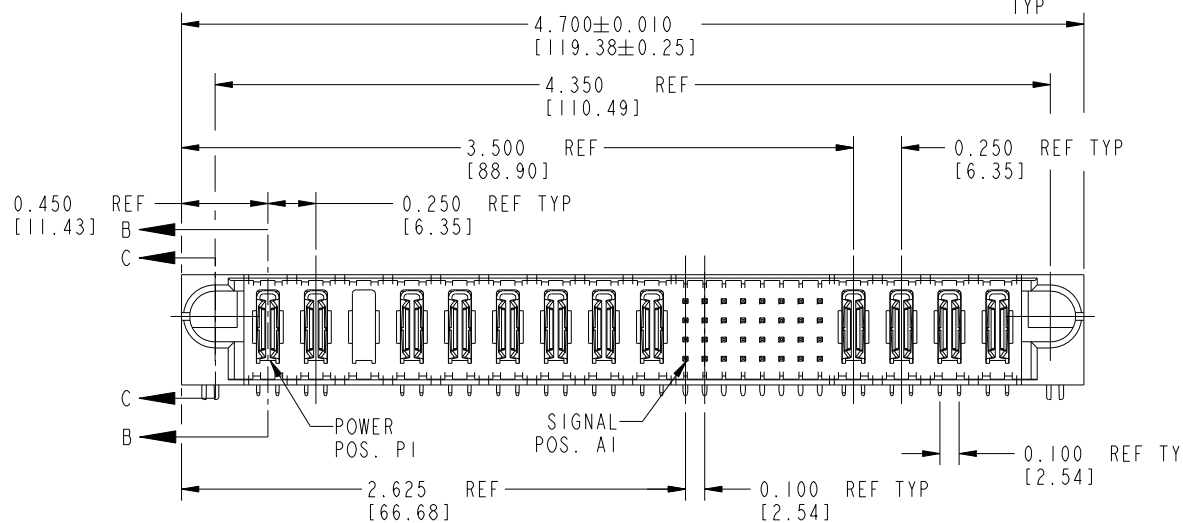
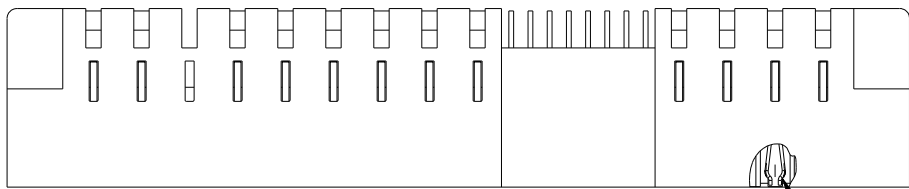
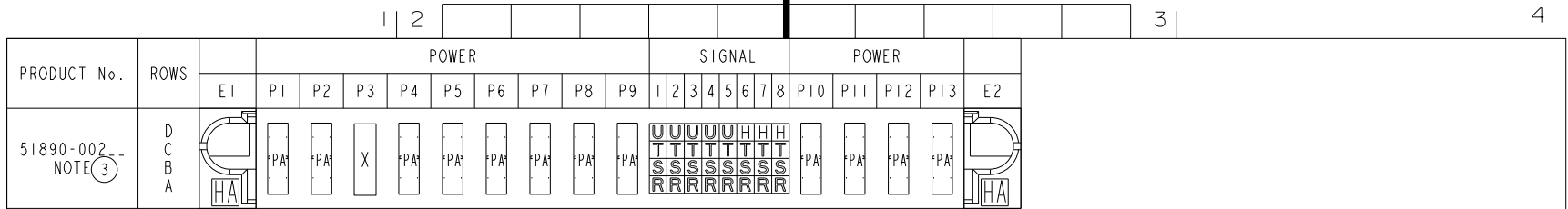


Tous droits strictement réservés. Reproduction ou communication a des tiers interdite sous quelque forme que ce soit sans autorisation écrite du propriétaire. Propriété de c FCI. Droits de reproduction FCI.



All rights strictly reserved. Reproduction or issue to third parties in any form whatever is not permitted without written authority from the proprietor. Property of FCI. Copyright FCI.



CODE	DIM "M" ±0.010 [0.25]	CONTACT TYPE
H	0.220 [5.59]	SIGNAL
R	0.270 [6.86]	SIGNAL
S	0.270 [6.86]	SIGNAL
T	0.270 [6.86]	SIGNAL
U	0.270 [6.86]	SIGNAL
PA	N/A [N/A]	POWER
HA	N/A [N/A]	HOLD-DOWN
X	OMITTED	

NOTE 1				tolerances unless otherwise specified		CUSTOMER COPY	
ltr	ecn no.	dr	date	linear	.XX±.01/0.X±0.3	projection	
A	V10871	JWS	02-08-01	angles	.XXX±.005/0.XX±0.13	INCH / MM	
B	V03-0571	TAB	05/27/03		.XXX±.0020/0.XXX±0.051	scale 1:1	
C	DG05-0064	SW	04/05/05	dr	0° ± 2°		
D	DG05-0203	SW	11/03/05	enr	J. SHAFFER 02-08-01		
E	DG08-0251	W D	09/16/08	chr	J. DODDS 02-08-01		
				appd	J. DODDS 02-08-01		
sheet index	revision sheet	E 1	E 2	E 3	E 4		

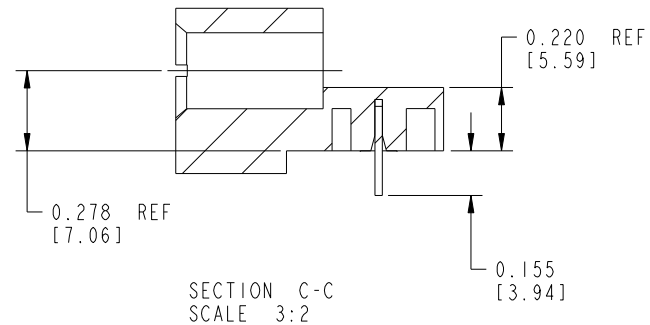
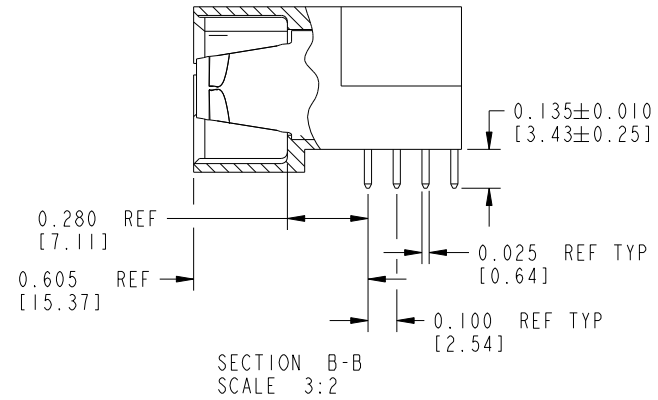
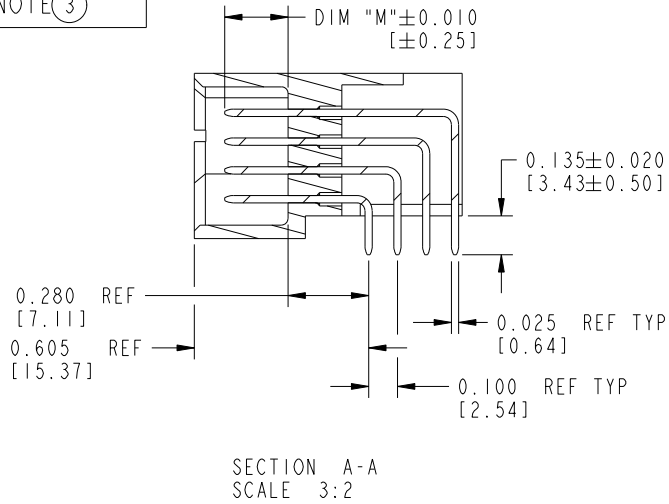
www.fciconnect.com		title 9P + 32S + 4P RIGHT ANGLE SOLDER HEADER	
product family PwrBlade		code 213	
size 51890-002		SHEET 1 OF 4	

Tous droits strictement réservés. Reproduction ou communication a des tiers interdite sous quelque forme que ce soit sans autorisation écrite du propriétaire. Propriété de c FCI. Droits de reproduction FCI.



All rights strictly reserved. Reproduction or issue to third parties in any form whatever is not permitted without written authority from the proprietor. Property of FCI. Copyright FCI.

PRODUCT NUMBER
51890-002--
NOTE ③



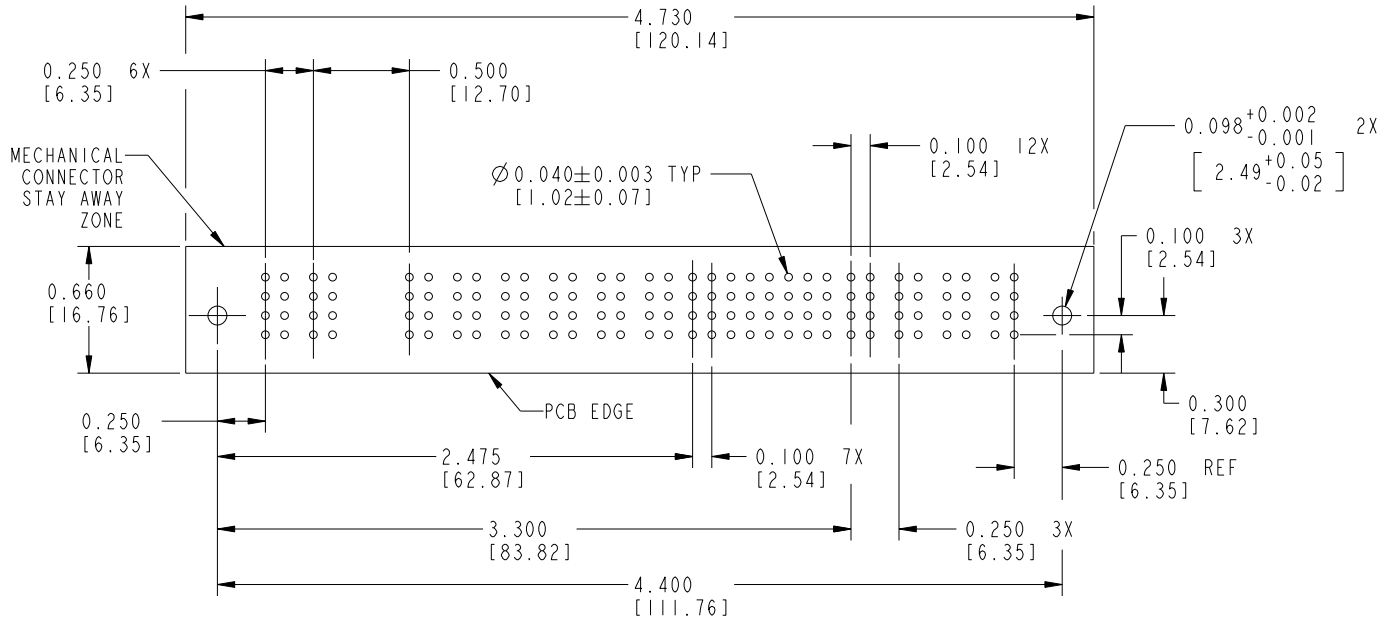
mat'l code		NOTE 1		tolerances unless otherwise specified		CUSTOMER COPY		www.fciconnect.com	
ltr	ecn no.	dr	date	linear	.XX ± .01 / 0.X ± 0.3	projection	title		
E					.XX ± .005 / 0.XX ± 0.13		9P + 32S + 4P		
				angles	.XXX ± .0020 / 0.XXX ± 0.051		RIGHT ANGLE SOLDER HEADER		
					0° ± 2°	INCH / MM scale 1:1	product family		code
				dr	J. SHAFFER 02-08-01		PwrBlade		213
				engr	J. DODDS 02-08-01		size	dwg no	SHEET
				chr	J. DODDS 02-08-01		A	51890-002	2
				appd	J. DODDS 02-08-01				
sheet index	revision sheet								

Tous droits strictement réservés. Reproduction ou communication a des tiers interdite sous quelque forme que ce soit sans autorisation écrite du propriétaire. Propriété de c FCI. Droits de reproduction FCI.



All rights strictly reserved. Reproduction or issue to third parties in any form whatever is not permitted without written authority from the proprietor. Property of FCI. Copyright FCI.

PRODUCT NUMBER
51890-002--
NOTE ③



RECOMMENDED PCB LAYOUT

NOTE 1				tolerances unless otherwise specified		CUSTOMER		FCI	
ltr	ecn no.	dr	date	linear	.XX±.01/0.X±0.3	COPY		www.fciconnect.com	
E				projection	.XX±.005/0.XX±0.13	9P + 32S + 4P		title	
				angles	.XXX±.0020/0.XXX±0.051	RIGHT ANGLE SOLDER HEADER		product family	
				dr	0°±2°	PwrBlade		code	
				enrg	J. SHAFER 02-08-01	INCH / MM		size	
				chr	J. DODDS 02-08-01	scale		dwg no	
				appd	J. DODDS 02-08-01	1:1		51890-002	
sheet index	revision sheet							cage code	2856

Tous droits strictement réservés. Reproduction ou communication a des tiers interdite sous quelque forme que ce soit sans autorisation écrite du propriétaire. Propriété de c FCI. Droits de reproduction FCI.



All rights strictly reserved. Reproduction or issue to third parties in any form whatever is not permitted without written authority from the proprietor. Property of FCI. Copyright FCI.

1 | 2 | | | | | | | | | 3 |

4

PRODUCT NUMBER
51890-002--
NOTE ③

NOTES:

1. DIMENSIONS AND TOLERANCES ARE IN ACCORDANCE WITH ASME Y14.5M, 1994 UNLESS OTHERWISE SPECIFIED.

CONNECTOR NOTES:

2. HOUSING MATERIAL: UL 94 V-0 GLASS FILLED HIGH-TEMP THERMOPLASTIC
POWER CONTACT MATERIAL: COPPER ALLOY
SIGNAL PIN MATERIAL: COPPER ALLOY

③ 3. SEE ITEM 1 & 2 IN PRINT 10064183 FOR PLATING SPEC OF 51890-002 AND 51890-002LF RESPECTIVELY.

4. MANUFACTURER'S NAME, P/N, AND DATE CODE TO APPEAR ON THIS SURFACE.

5. PRODUCT SPECIFICATION GS-12-149.
APPLICATION SPECIFICATION BUS-20-067.

PCB NOTES:

6. ALL HOLE DIAMETERS ARE FINISHED HOLE SIZE.

7. MOUNTING HOLES, WHERE APPLICABLE, ARE UNPLATED.

8. $\varnothing .0453 \pm 0.0010$ [1.151 \pm 0.025] DRILLED HOLES PLATED WITH
0.0003 [0.008] MIN SnPb OVER .001 [0.03]
TO .003 [0.08] Cu PLATING TO ACHIEVE
 $\varnothing .040 \pm .003$ [1.02 \pm .07] HOLE.

9. "DIM XXX" TO BE DETERMINED BY THE CUSTOMER.

10. CONNECTOR KEEP-OUT ZONE.

11. A ③ SYMBOL WILL BE NEXT TO ANY DIMENSION, VIEW, OR NOTE WHICH HAS BEEN MODIFIED WITH THE CURRENT DRAWING REVISION.

mat'l code		SEE NOTES		tolerances unless otherwise specified		CUSTOMER		FCI	
ltr	ecn no.	dr	date	linear	.XX \pm .01/0.XX \pm 0.3	COPY		www.fciconnect.com	
E				linear	.XXX \pm .01/0.XX \pm 0.13	projection		title 9P +32S +4P	
				angles	.XXX \pm .01/0.XXX \pm 0.051			RIGHT ANGLE SOLDER HEADER	
				angles	0 $^{\circ}$ \pm 2 $^{\circ}$	INCH/MM		product family PwrBlade code	
				dr	J. SHAFFER 02-08-01	scale 1:1		size dwg no 213	
				enrg	J. DODDS 02-08-01			sheet 4	
				chr	J. DODDS 02-08-01			A 51890-002	
				appd	J. DODDS 02-08-01				
sheet index	revision sheet								

THIS FILE WAS ORIGINALLY CREATED IN THE PRO ENGINEER ENVIRONMENT AND ANY FUTURE REVISIONS TO THIS FILE MUST BE MADE IN THE PRO ENGINEER ENVIRONMENT

B

A

B