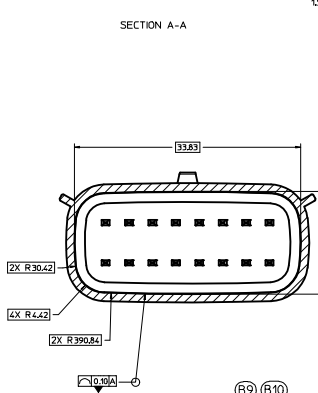
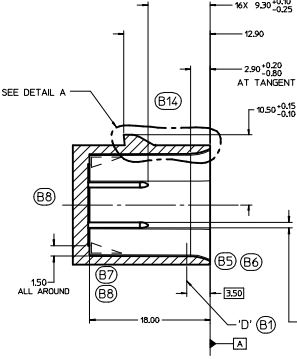
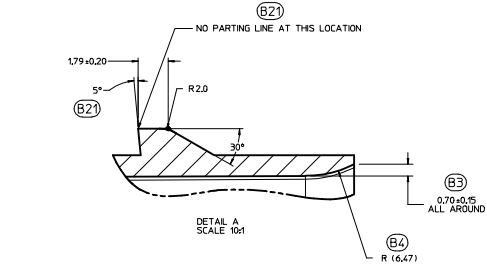
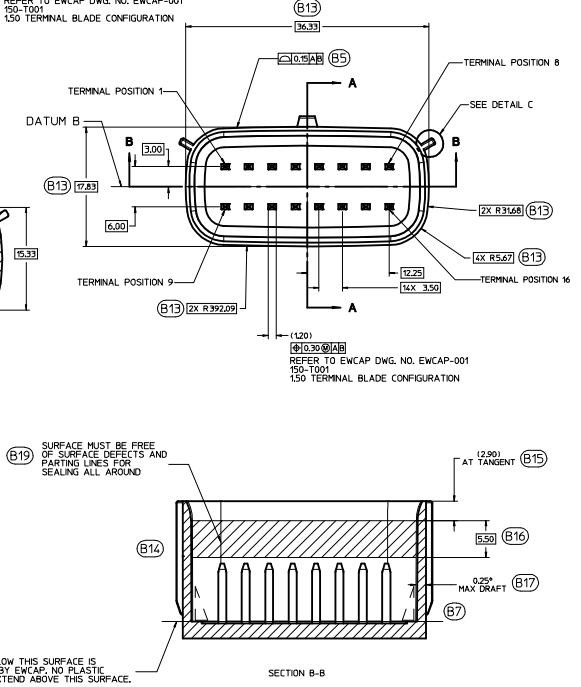
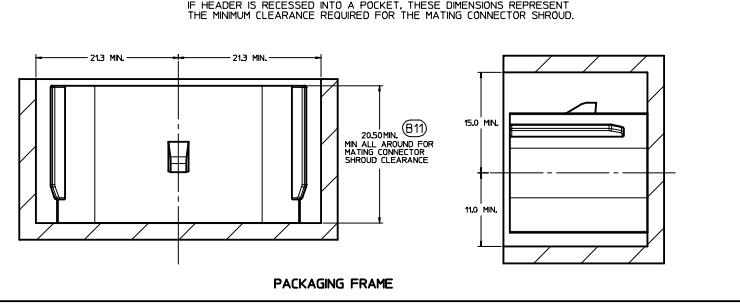
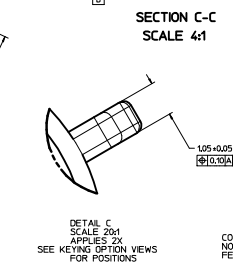


| 150-S-016-2-001 | D | BLACK |
|-----------------|--------|------------------------|
| 150-S-016-2-C01 | C | DK GRAY |
| 150-S-016-2-B01 | B | LT GRAY |
| 150-S-016-2-A01 | A | BLACK |
| EWCAP PIN | OPTION | MATING CONNECTOR COLOR |



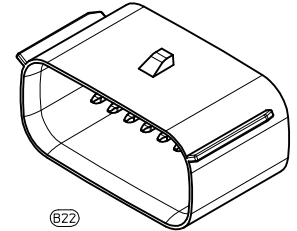
(B19) SURFACE MUST BE FREE OF SURFACE DEFECTS AND PARTING LINES FOR SEALING ALL AROUND



CONSTRUCTION BELOW THIS SURFACE IS NOT CONTROLLED BY EWCAP. NO PLASTIC FEATURES MAY EXTEND ABOVE THIS SURFACE.

NOTICE
THIS DRAWING OR PORTIONS OF IT, ARE CONTROLLED BY THE ELECTRICAL WIRING COMPONENTS APPLICATION PARTNERSHIP (EWCAP). A SUBGROUP OF THE UNITED STATES CONSORTIUM FOR AUTOMOTIVE RESEARCH (USCAR). USCAR IS A PARTNERSHIP BETWEEN CHRYSLER GROUP LLC, FORD MOTOR COMPANY, AND GENERAL MOTORS CORPORATION ANY CHANGE TO A EWCAP CONTROLLED PORTION OF THIS DRAWING, INCLUDING A "RECORD CHANGE" MUST BE APPROVED IN WRITING, BY THE RESPONSIBLE EWCAP MEMBER FROM EACH USCAR COMPANY. EACH EWCAP MEMBER AUTHORIZED TO SIGN FOR HIS OR HER COMPANY IS RESPONSIBLE FOR OBTAINING ALL NECESSARY APPROVALS WITHIN THAT COMPANY PRIOR TO SIGNING FOR APPROVAL OF THE CHANGE. EWCAP EXPRESSLY PROHIBITS ANY PARTY FROM CHANGING EITHER ANY EWCAP CONTROLLED PORTION OF THIS DRAWING OR ANY ASSOCIATED TOOLING BEFORE RECEIVING AN APPROVAL, SIGNED BY AN AUTHORIZED REPRESENTATIVE FROM EACH EWCAP PARTNER. REFERENCE TO THE SIGNED APPROVAL FORM MUST BE ENTERED IN THIS DRAWING'S CONTROL COLUMN.

- NOTES: UNLESS OTHERWISE SPECIFIED (B18)
- ALL DIMENSIONS SHOWN IN MILLIMETERS.
 - DIMENSIONING AND TOLERANCING PER ASME Y14.5M-1994
 - 0.25 RADI ON ALL CORNERS SHOWN SHARP.
 - UNSPECIFIED RADII: 0.25 EXCEPT AS NOTED.
 - STANDARD COLORS FOR POLARIZATION (SEE CHART). DEVIATION REQUIRES APPROVAL OF AUTHORIZED PERSON.
 - REFER TO "SAE/USCAR 12 CONNECTOR GUIDELINES" FOR ADDITIONAL REQUIREMENTS.
 - EXCEPT WHERE NOTED, DRAFT ON OUTSIDE SURFACES IS PERMISSIBLE WITHIN TOLERANCE.
 - SYMBOL INDICATES DRAFT DIRECTION.
 - FOR TERMINAL MATERIAL, DIMENSIONAL AND COATING REQUIREMENTS AND ANY BLADE TERMINAL DESIGN INFORMATION NOT SHOWN ON THIS DRAWING SEE EWCAP DRW. NO. EWCAP-001
 - A FULL SHROUD ON THE MATING CONNECTOR IS REQUIRED TO INSURE THAT THE CONNECTOR-HEADER POLARIZATION FEATURES (OPTIONS A THRU D) WILL FUNCTION. THE FULL SHROUD ALSO PREVENTS SCODD DAMAGE TO THE HEADER PINS. REFER TO "SAE/USCAR-12 CONNECTOR DESIGN GUIDE LINES" FOR ADDITIONAL INFORMATION.
 - REFER TO USCA/EWCAP PART LIST AS FOUND ON WEBSITE <http://www.uscar12.com>
 - THIS IS A 100% CAD GENERATED PART. THE CAD MATHEMATICAL DATA IS THE MASTER FOR THIS PART. FOR DIMENSIONAL OR ANY INFORMATION NOT SHOWN ON THIS DRAWING, ANALYZE THE CAD MODEL.



| CHG | NO | DESCRIPTION | DATE | BY | CHK |
|-----|-----|---|----------|----|-----|
| 095 | B22 | CHANGED ISO VIEW SCALE TO 4X HAS 11 | | | |
| 095 | B21 | ADDED PARTING LINE NOTE TO DETAIL A REMOVED NOTE BACK ANGLE OPTIONAL FROM 5° | | | |
| 095 | B20 | CORRECTED CHRYSLER GROUP LLC Nomenclature | | | |
| 095 | B19 | MOVED NOTE TO SECTION B-B | | | |
| 095 | B18 | UPDATED NOTES | | | |
| 095 | B17 | ADDED 0.25° MAX DRAFT ANGLE ALL AROUND | | | |
| 095 | B16 | ADDED (B30) | | | |
| 095 | B15 | ADDED AT TANGENT NOTE | | | |
| 095 | B14 | REMOVED DATUM D | | | |
| 095 | B13 | ADDED BASIC DIMENSIONS FOR PROFILE CONTROL | | | |
| 095 | B12 | ADDED (B10,20)(B) | | | |
| 095 | B11 | DIMENSIONED TO DATUM A | | | |
| 095 | B10 | SEALING SURFACE DIMENSIONS MOVED TO SECTION C-C | | | |
| 095 | B9 | ADDED SECTION C-C | | | |
| 095 | B8 | REMOVED 15.20 AND 2.50 FROM SECTION A-A | | | |
| 095 | B7 | ADDED DRAFT ANGLE DIRECTION | | | |
| 095 | B6 | REMOVED 0.80 ±0.07-0.20 ALL AROUND | | | |
| 095 | B5 | REPLAZED WALL THICKNESS CONTROL WITH PROFILE OF A SURFACE | | | |
| 095 | B4 | ADDED (R14)? | | | |
| 095 | B3 | ADDED 0.70 ±0.15 ALL AROUND | | | |
| 095 | B2 | UPDATED CONNECTOR COLORS | | | |
| 095 | B1 | SURFACE 9° RELOCATED TO (B30) WAS AT 8.20 | 03-22-12 | KC | HY |
| | A | RELEASED | 10-31-02 | DS | JC |

| | | | | |
|---------------------------------------|-----------------|-----------------------|-----|-----|
| LET | REVISION RECORD | DATE | DWN | CHK |
| TOLERANCES UNLESS OTHERWISE SPECIFIED | | THIS SYMBOL INDICATES | | |
| DIMENSIONS ARE BY _____ MILLIMETERS | | | | |
| ANGLES _____ ° | | | | |
| HOLE POSITION _____ | | | | |
| X ±0.2 | | | | |
| Y ±0.1 | | | | |
| Z ±0.10 | | | | |

EWCAP

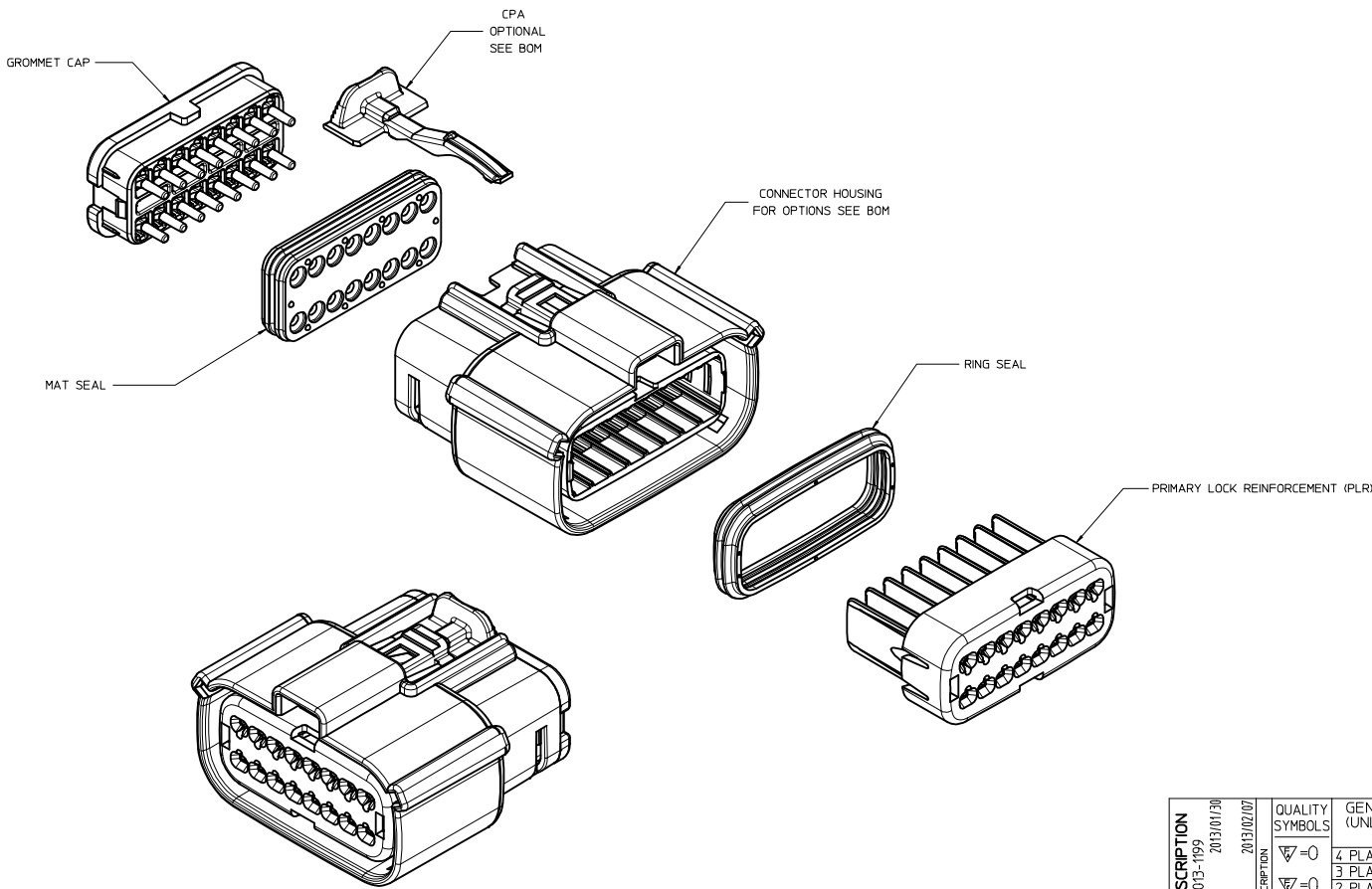
DIRECT CONNECT INTERFACE
16 WAY (2 X 8) 1.5MM SEALED MALE

DRAWN NUMBER: 150-S-016-2-Z01
SCALE: 1:1
SHEET: 1 OF 1

DO NOT SCALE DIMENSIONS
COMPUTER AIDED DRAWING

REVISION LEVEL: B

| TABLE OF CONTENTS | |
|-------------------|----------------------------|
| SHEET NO. | SHEET DESCRIPTION |
| 1 | NOTES |
| 2 | KEY CONFIGURATIONS |
| 3 | RECEPTACLE SEALED ASSEMBLY |
| 4-6 | BOM |



NOTES: VALID UNLESS OTHERWISE SPECIFIED

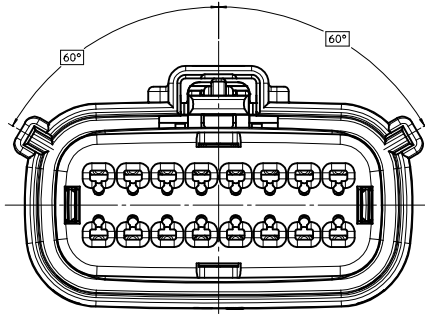
- 1. GENERAL:**
a. APPLICATION SPECIFICATION SEE: AS-33472-100
 -CONTAINS: PRODUCT INTRODUCTION, PRODUCT SUMMARY, CONNECTOR ASSEMBLY, PACKAGING INFORMATION, CONNECTOR MATING, SERVICE INSTRUCTIONS, ELECTRICAL CONTINUITY CHECKING, CRIMPING, AND TROUBLESHOOTING.
 -DESIGNED TO MATE WITH DEVICE CONNECTION AS SPECIFIED IN DRAWING ENCAP 150-S-016-2-201, AVAILABLE AT <http://www.molex.com>
 -DESIGNED TO MATE WITH BLADE SEALED ASSEMBLY AS SPECIFIED IN DRAWING SD-33482-161
 -FOR 15mm RECEPTACLE TERMINALS TO BE USED WITH THIS ASSEMBLY SEE MOLEX DRAWING SD-33012-002.
 -SYSTEM TO BE USED WITH WIRE WITHIN DIAMETER RANGE OF 1.2 mm TO 2.69 mm.
 -ASSEMBLY SHIPPED WITH PLR AND CPA IN PRE-LOCK POSITION (SEE SECTION Z-Z PRE-LOCK).
 -IN THE EVENT THAT THE PLR IS FOUND IN THE SEATED (FINAL LOCK) POSITION, REFER TO MOLEX SPECIFICATION PS-34646-001, AVAILABLE AT www.molex.com <http://www.molex.com>
 -ASSEMBLY CONFORMS TO SAE/USCAR-2 REV.4 WITH THE FOLLOWING EXCEPTIONS:
 -ENGAGEMENT FORCE TO MOVE CPA FROM PRE-LOCK TO FINAL LOCK POSITION WHEN UNMATED: 40N MIN.
 -DISENGAGEMENT FORCE TO MOVE CPA FROM FINAL LOCK TO PRE-LOCK POSITION: 3N MIN, 40N MAX.
 -TERMINAL INSERTION FORCE FOR WIRE DIAMETER ABOVE 2.5mm NOT EXCEEDING 2.69mm SHALL NOT EXCEED 40 NEWTONS.
b. PRODUCT SPECIFICATION SEE: PS-33472-000
 -CONTAINS: PRODUCT INTRODUCTION, PRODUCT SUMMARY, RATINGS (CURRENT, TEMPERATURE, SEALING, AND FLAMMABILITY), AND PRODUCT VALIDATION.
c. PACKAGING SPECIFICATION PER MOLEX DRAWING: PK-31800-903
d. PARTS MUST BE IN COMPLIANCE TO MOLEX CHEMICAL SUBSTANCES FOR PRODUCTS AND PACKAGING SPECIFICATION: ES-40000-5016
e. DATA MUST BE SUBMITTED UNDER THE MOLEX PART NUMBER TO IMDS (COMPANY ID#13255)
2. DESIGN - MATERIALS:
a. CONNECTOR HOUSING, GROMMET CAP, PRIMARY LOCK REINFORCER (PLR):
 -SPS/NYLON BLEND, 20% GLASS FILLED
b. MAT SEAL, RING SEAL: INHERENTLY LUBRICATED SILICONE
c. CPA: PBT 20% GLASS FILLED
3. DESIGN - GEOMETRY:
a. THIS IS A 100% CAD GENERATED PART. THE CAD MATHEMATICAL DATA IS THE MASTER FOR THIS PART. FOR DIMENSIONAL OR ANY INFORMATION NOT SHOWN ON THIS DRAWING, ANALYZE THE CAD MODEL.
b. GEOMETRIC DIMENSIONS AND TOLERANCES PER ASME Y14.5M - 1994
c. EDGES AND UNDIMENSIONED DETAILS PER ISO13715
d. CORNERS SHOWN AS SHARP TO BE R 0.2 MAX.
e. LETTERING SHALL BE 0.15 MAX RAISED IN 0.25 MAX RECESS PAD. THIS INCLUDES RECYCLING CODE, CAVITY ID, VENDOR IDENTIFICATION, AND CUSTOMER MATERIAL NUMBER.
f. VISUAL DEFECTS SHALL MEET COSMETIC STANDARD PS-45499-002 (Class B)
g. LASER MARKING: TBD

INSPECTION NUMBER LOG
 LAST NUMBER USED:
 ADDED:
 REMOVED:

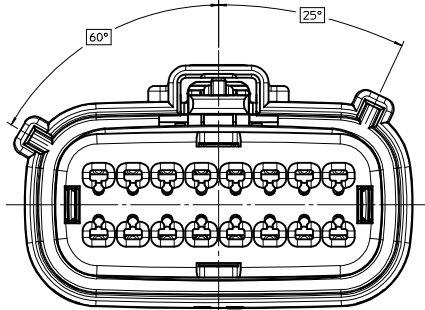
| REV | DESCRIPTION | DATE | BY |
|-----|-----------------------------------|------------|------------|
| AS8 | ADDED PIN OUT | 33472-1826 | 33472-1827 |
| | | 33472-1828 | 33472-1829 |
| | | 33472-1830 | 33472-1831 |
| AS8 | ADDED PIN OUT | 33472-1818 | 33472-1819 |
| | | 33472-1820 | 33472-1821 |
| | | 33472-1822 | 33472-1823 |
| | | 33472-1824 | 33472-1825 |
| AS7 | UPDATED DIMENSIONS TO MATCH MODEL | | |
| AS6 | ADDED PIN OUT | 33472-1811 | 33472-1812 |
| | | 33472-1813 | 33472-1814 |
| | | 33472-1815 | 33472-1816 |
| | | 33472-1817 | |
| AS5 | ADDED PIN OUT | 33472-1806 | 33472-1807 |
| | | 33472-1808 | 33472-1809 |
| | | 33472-1810 | |

| | | | | | | |
|--|-----------------|--|--|-------|------------------|------------------------|
| ENTER DESCRIPTION EEC NO: UAU2013-1199 DRAWN BY: A39 CHKD: APPR: VKOSHY DATE: 2013/01/30 DESCRIPTION: 2013/02/07 | QUALITY SYMBOLS | GENERAL TOLERANCES (UNLESS SPECIFIED) | DIMENSION STYLE | SCALE | DESIGN UNITS | THIRD ANGLE PROJECTION |
| | ▽=0 | 4 PLACES ± mm INCH | MM ONLY | 3:1 | METRIC | ☉ |
| | ▽=0 | 3 PLACES ± 0.10 | DGR1FF1THS 05-29-03 | | | |
| | ▽=0 | 2 PLACES ± 0.3 | DGR1FF1THS 05-29-03 | | | |
| | | 1 PLACE ± 0.3 | APPROVED BY: VKOSHY 2010/10/27 | | | |
| | | 0 PLACE ± | | | | |
| | | ANGULAR ± 3 ° | MATERIAL NO. SEE BOM | | | |
| | | DRAFT WHERE APPLICABLE MUST REMAIN WITHIN DIMENSIONS | SIZE D | | | |
| | | | DOCUMENT NO. SD-33472-161 | | SHEET NO. 1 OF 7 | |
| | | | molex MX150 2X8 RECEPTACLE SEALED ASSEMBLY MAT SEAL THIS DRAWING CONTAINS INFORMATION THAT IS PROPRIETARY TO MOLEX INCORPORATED AND SHOULD NOT BE USED WITHOUT WRITTEN PERMISSION | | | |

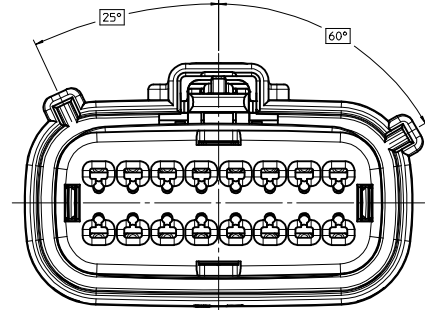
KEY CONFIGURATIONS



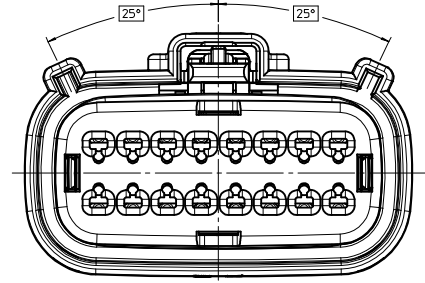
KEY A



KEY B



KEY C



KEY D

| | | | | | | | | | |
|--|---|--|-------------------------|-----------------------------------|--|------------------------|------------------------|--|--|
| ENTER DESCRIPTION EC NO: UAU2013-1199 DRAWN BY: 2013/01/30 CHKD: A39 APPR: VKOSHY 2013/02/07 | QUALITY SYMBOLS ∇=0 ∇=0 ∇=0 | GENERAL TOLERANCES (UNLESS SPECIFIED) | | DIMENSION STYLE MM ONLY | SCALE 4:1 | DESIGN UNITS METRIC | THIRD ANGLE PROJECTION | | |
| | | 4 PLACES ± mm ± INCH | DRAWN BY DGRIFITHS | DATE 05-29-03 | TITLE MX150 2X8 RECEPTACLE SEALED ASSEMBLY MAT SEAL | | | | |
| | | 3 PLACES ± 0.10 ± --- ± --- | CHECKED BY DGRIFITHS | DATE 05-29-03 | MATERIAL NO. SEE BOM | | | | |
| | | 2 PLACES ± 0.3 ± --- ± --- | APPROVED BY VKOSHY | DATE 2010/10/27 | DOCUMENT NO. SD-33472-161 | SHEET NO. 2 OF 7 | | | |

ANGULAR ± 3 °

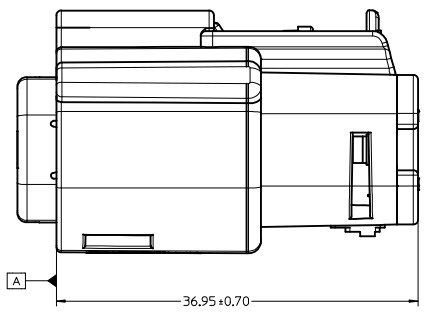
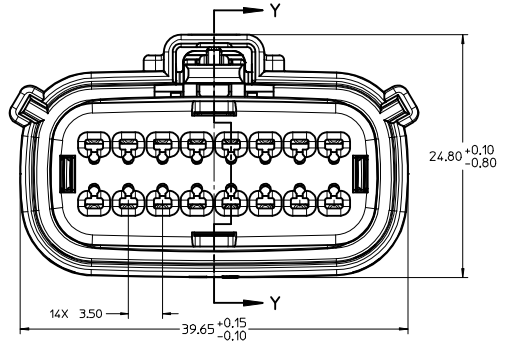
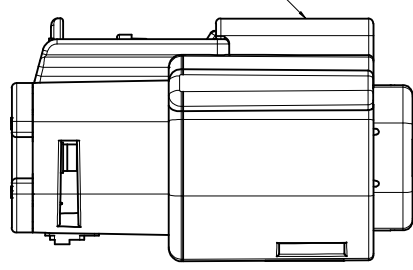
DRAFT WHERE APPLICABLE MUST REMAIN WITHIN DIMENSIONS

SIZE D

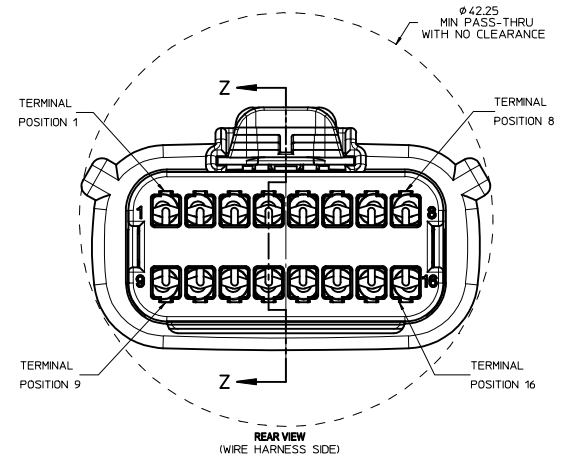
THIS DRAWING CONTAINS INFORMATION THAT IS PROPRIETARY TO MOLEX INCORPORATED AND SHOULD NOT BE USED WITHOUT WRITTEN PERMISSION

20 19 18 17 16 15 14 13 12 11 10 9 8 7 6 5 4 3 2 1

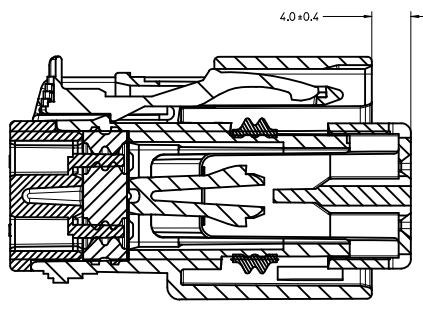
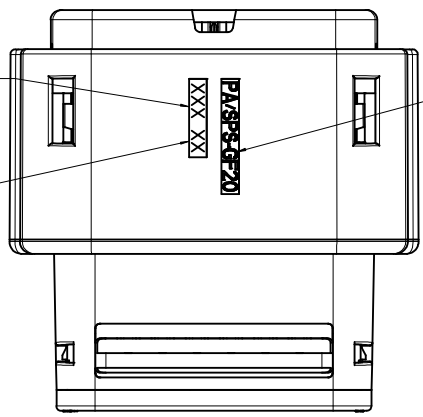
LASER MARKING ON THIS SURFACE
SEE NOTE 3g.



RECEPTACLE SEALED ASSEMBLY

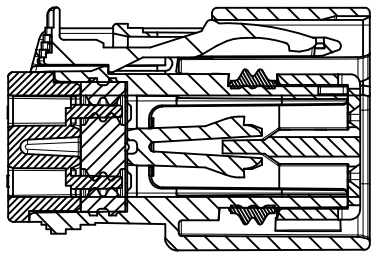


MOLD CAVITY CODE
LOCATION CODE
RECYCLE CODE



PRIMARY LOCK REINFORCEMENT (PLR) SHOWN
IN PRE-STAGED POSITION
SECTION Z-Z

4.0 ± 0.4



PRIMARY LOCK REINFORCEMENT (PLR) SHOWN
IN FINAL-LOCK POSITION
SECTION Y-Y

| | | | | | | |
|---|-----------------|--|-----------------|----------|--------------|---|
| ENTER DESCRIPTION EEC NO: UAU2013-1199 DRAWN BY CHKD: APPR: VKOSHY 2013/02/07 2013/01/30 AS9 | QUALITY SYMBOLS | GENERAL TOLERANCES (UNLESS SPECIFIED) | DIMENSION STYLE | SCALE | DESIGN UNITS | THIRD ANGLE PROJECTION |
| | ▽=0 | 4 PLACES ± --- ± --- | MM ONLY | 4:1 | METRIC | |
| | ▽=0 | 3 PLACES ± --- ± --- | | | | |
| | ▽=0 | 2 PLACES ± 0.10 ± --- | | | | |
| | | 1 PLACE ± 0.3 ± --- | | | | |
| | | 0 PLACE ± ± | | | | |
| | | ANGULAR ± 3 ° | | | | |
| | | DRAFT WHERE APPLICABLE MUST REMAIN WITHIN DIMENSIONS | | | | |
| | | | MATERIAL NO. | DATE | DATE | TITLE |
| | | | SEE BOM | 05-29-03 | 05-29-03 | MX150 2X8 RECEPTACLE SEALED ASSEMBLY MAT SEAL |
| | | | | | | molex |
| | | | | | | DOCUMENT NO. SD-33472-161 |
| | | | | | | SHEET NO. 3 OF 7 |
| | | | | | | THIS DRAWING CONTAINS INFORMATION THAT IS PROPRIETARY TO MOLEX INCORPORATED AND SHOULD NOT BE USED WITHOUT WRITTEN PERMISSION |

19 18 17 16 15 14 13 12 11 10 9 8 7 6 5 4 3 2 1

20 19 18 17 16 15 14 13 12 11 10 9 8 7 6 5 4 3 2 1

| ASSEMBLY PART NUMBER | COLOR | KEYING OPTION | CPA | CAVITY TYPE & STATUS (X = PLUGGED) | | | | | | | | | | | | | | | | STATUS |
|----------------------|-------|---------------|-----|------------------------------------|---|---|---|---|---|---|---|---|----|----|----|----|----|----|----------|----------|
| | | | | 1 | 2 | 3 | 4 | 5 | 6 | 7 | 8 | 9 | 10 | 11 | 12 | 13 | 14 | 15 | 16 | |
| ASP 33472-1826 | BLACK | A | - | | X | X | X | X | X | | | | | X | | X | X | X | | SALEABLE |
| ASP 33472-1827 | BLACK | A | - | X | X | X | X | X | X | | | | | X | X | X | X | X | X | SALEABLE |
| ASP 33472-1828 | BLACK | A | - | | | | | X | | | | | | X | X | X | X | X | SALEABLE | |
| ASP 33472-1829 | BLACK | A | - | X | X | X | X | X | X | | | | | X | X | X | X | X | SALEABLE | |
| ASP 33472-1830 | BLACK | A | - | X | X | X | X | X | X | | | | | X | X | | X | | SALEABLE | |
| ASP 33472-1831 | BLACK | A | - | | | | | X | | | | | | X | X | X | X | X | SALEABLE | |

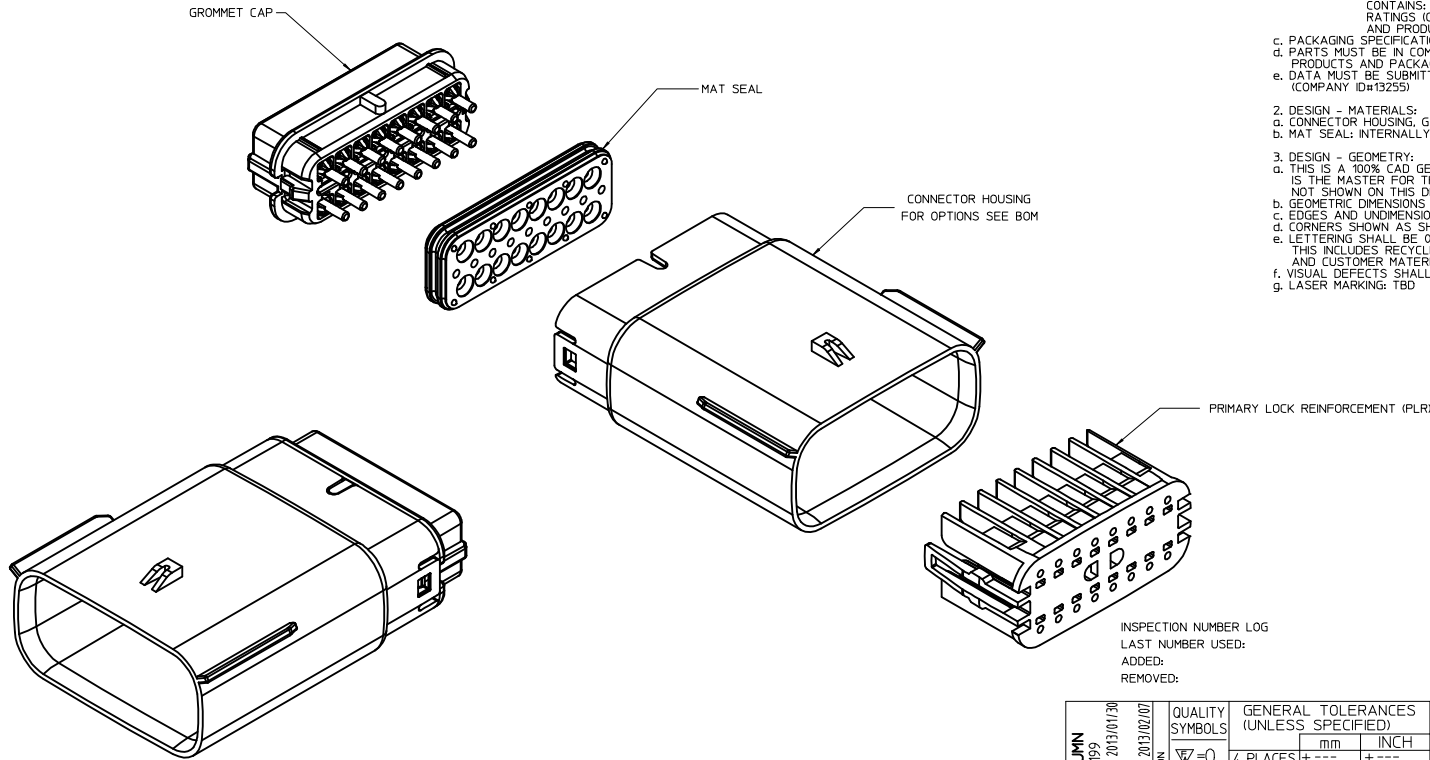
| | | | | | | | |
|--|-----------------|--|---------------------|---|---|------------------------|--|
| ENTER DESCRIPTION EC NO: UAU2013-1199 DRAWN BY: 2013/01/30 CHKD: ASP APPR: VKOSHY 2013/02/07 | QUALITY SYMBOLS | GENERAL TOLERANCES (UNLESS SPECIFIED) | DIMENSION STYLE | SCALE | DESIGN UNITS | THIRD ANGLE PROJECTION | |
| | ▽=0 | mm INCH | MM ONLY | 2:1 | METRIC | | |
| | ▽=0 | 4 PLACES ± 0.10 | DGRAFFITHS 05-29-03 | DRAWN BY DATE | TITLE | | |
| | ▽=0 | 2 PLACES ± 0.3 | DGRAFFITHS 05-29-03 | CHECKED BY DATE | MX150 2X8 RECEPTACLE SEALED ASSEMBLY MAT SEAL | | |
| | ANGULAR ± 3° | DRAFT WHERE APPLICABLE MUST REMAIN WITHIN DIMENSIONS | MATERIAL NO. | APPROVED BY DATE | DOCUMENT NO. | | |
| | | | SEE BOM | VKOSHY 2010/10/27 | SD-33472-161 | | |
| | | | SIZE D | THIS DRAWING CONTAINS INFORMATION THAT IS PROPRIETARY TO MOLEX INCORPORATED AND SHOULD NOT BE USED WITHOUT WRITTEN PERMISSION | | | |
| | | | | | | SHEET NO. 7 OF 7 | |

19 18 17 16 15 14 13 12 11 10 9 8 7 6 5 4 3 2 1

| TABLE OF CONTENTS | |
|-------------------|-----------------------|
| SHEET NO. | SHEET DESCRIPTION |
| 1 | NOTES |
| 2 | KEY CONFIGURATIONS |
| 3 | BLADE SEALED ASSEMBLY |
| 4 | SYSTEM PACKAGING |
| 5-7 | BOM |

NOTES: VALID UNLESS OTHERWISE SPECIFIED

1. GENERAL:
 - a. APPLICATION SPECIFICATION SEE: AS-33472-100
CONTAINS: PRODUCT INTRODUCTION, PRODUCT SUMMARY, CONNECTOR ASSEMBLY, PACKAGING INFORMATION, CONNECTOR MATING, SERVICE INSTRUCTIONS, ELECTRICAL CONTINUITY CHECKING, CRIMPING, AND TROUBLESHOOTING
-DESIGNED TO MATE WITH RECEPTACLE SEALED ASSEMBLY SPECIFIED IN MOLEX DRAWING SD-33472-161
-FOR 1.5mm BLADE TERMINALS TO BE USED WITH THIS ASSEMBLY SEE MOLEX DRAWING SD-33000-001
- SYSTEM TO BE USED WITH WIRE WITHIN DIAMETER RANGE OF 1.2mm TO 2.69mm.
-ASSEMBLY SHIPPED WITH PLR IN PRE-LOCK POSITION
-IN THE EVENT THAT THE PLR IS FOUND IN THE SEATED (FINAL LOCK) POSITION, REFER TO MOLEX SPECIFICATION PS-34646-001, AVAILABLE AT www.molex.com <<http://www.molex.com>>
-ASSEMBLY CONFORMS TO SAE/USCAR-2 REV.4 WITH THE FOLLOWING EXCEPTIONS:
TERMINAL INSERTION FORCE FOR WIRE DIAMETER ABOVE 2.5mm NOT EXCEEDING 2.69mm SHALL NOT EXCEED 45 NEWTONS.
 - b. PRODUCT SPECIFICATION SEE: PS-33472-000
CONTAINS: PRODUCT INTRODUCTION, PRODUCT SUMMARY, RATINGS (CURRENT, TEMPERATURE, SEALING, AND FLAMMABILITY), AND PRODUCT VALIDATION.
 - c. PACKAGING SPECIFICATION PER MOLEX DRAWING: PK-31300-635
 - d. PARTS MUST BE IN COMPLIANCE TO MOLEX CHEMICAL SUBSTANCES FOR PRODUCTS AND PACKAGING SPECIFICATION: ES-40000-5016
 - e. DATA MUST BE SUBMITTED UNDER THE MOLEX PART NUMBER TO IMDS (COMPANY ID#13255)
2. DESIGN - MATERIALS:
 - a. CONNECTOR HOUSING, GROMMET CAP, PLR: SPS/NYLON 20% GLASS FILLED
 - b. MAT SEAL: INTERNALLY LUBRICATED SILICONE
3. DESIGN - GEOMETRY:
 - a. THIS IS A 100% CAD GENERATED PART. THE CAD MATHEMATICAL DATA IS THE MASTER FOR THIS PART. FOR DIMENSIONAL OR ANY INFORMATION NOT SHOWN ON THIS DRAWING, ANALYZE THE CAD MODEL.
 - b. GEOMETRIC DIMENSIONS AND TOLERANCES PER ASME Y14.5M - 1994
 - c. EDGES AND UNDIMENSIONED DETAILS PER ISO13715
 - d. CORNERS SHOWN AS SHARP TO BE R 0.2 MAX.
 - e. LETTERING SHALL BE 0.15 MAX RAISED IN 0.25 MAX RECESS PAD. THIS INCLUDES RECYCLING CODE, CAVITY ID, VENDOR IDENTIFICATION, AND CUSTOMER MATERIAL NUMBER
 - f. VISUAL DEFECTS SHALL MEET COSMETIC STANDARD PS-45499-002 (Class B)
 - g. LASER MARKING: TBD

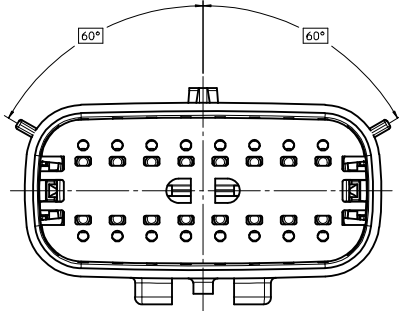


INSPECTION NUMBER LOG
LAST NUMBER USED:
ADDED:
REMOVED:

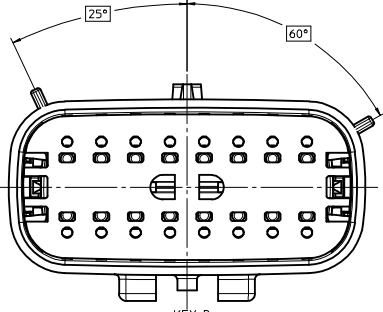
| | |
|-----|---|
| AE | ADDED PIN OUT 33482-1735 33482-1736 33482-1737 |
| AD | ADDED PIN OUT 33482-1729 33482-1730 33482-1731 33482-1732 33482-1733 33482-1734 |
| AC | UPDATED GROMMET CAP |
| AB5 | COLOR REPLACEMENT FOR KEY C AND D PER USCAR STANDARD |
| AB4 | ADDED PIN OUT 33482-1724 |
| AB3 | CORRECTED DIMENSION TO MATCH MODEL |
| AB2 | UPDATED NOTES |
| AB1 | UPDATED NOMENCLATURE ON SHEET 3 |
| AB | REDRAWN |
| REV | DESCRIPTION |

| | | | | | | |
|---|--|--|---|---|--------------|---|
| SEE REV. COLUMN IEC NO: UAU2013-1199 DRAWN BY: CHKD APPR: VKOSHY DATE: 2013/01/30 DESCRIPTION: 2013/02/07 | QUALITY SYMBOLS | GENERAL TOLERANCES (UNLESS SPECIFIED) | DIMENSION STYLE | SCALE | DESIGN UNITS | THIRD ANGLE PROJECTION MX150 2X8 BLADE SEALED ASSEMBLY MAT SEAL molex MATERIAL NO. SEE BOM DOCUMENT NO. SD-33482-161 SHEET NO. 1 OF 7 |
| | $\nabla=0$ $\nabla=0$ $\nabla=0$ | mm INCH 4 PLACES ± --- ± --- 3 PLACES ± 0.10 ± --- 2 PLACES ± 0.3 ± --- 1 PLACE ± ± --- 0 PLACE ± ± --- | DRAWN BY DATE DGR1FF1THS 05-29-03 CHECKED BY DATE DGR1FF1THS 05-29-03 APPROVED BY DATE VKOSHY 2010/04/06 | MM ONLY 3:1 | METRIC | |
| | ANGULAR ± 3 ° DRAFT WHERE APPLICABLE MUST REMAIN WITHIN DIMENSIONS | SEE BOM | SIZE D | THIS DRAWING CONTAINS INFORMATION THAT IS PROPRIETARY TO MOLEX INCORPORATED AND SHOULD NOT BE USED WITHOUT WRITTEN PERMISSION | | |
| | | | | | | |

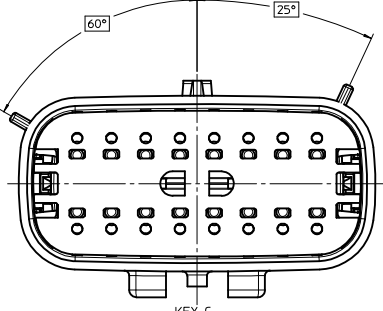
KEY CONFIGURATIONS



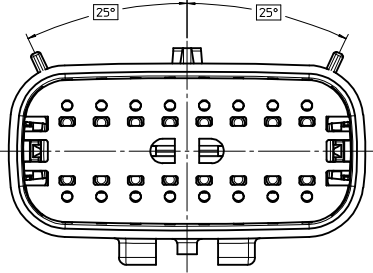
KEY A



KEY B



KEY C

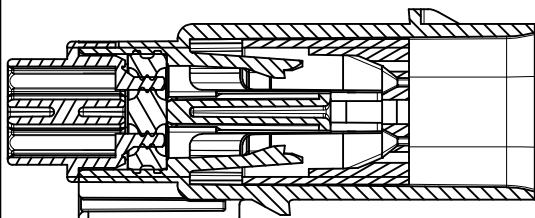
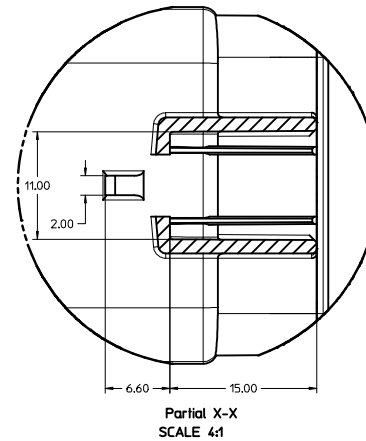
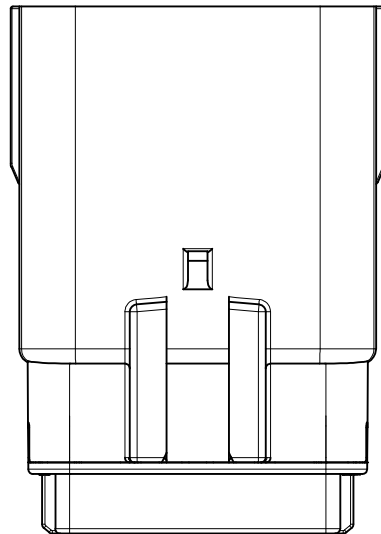
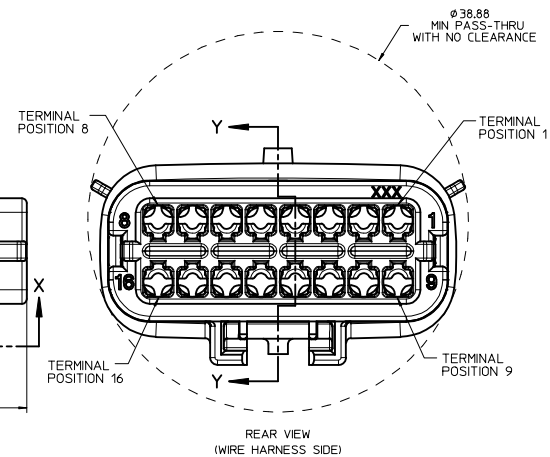
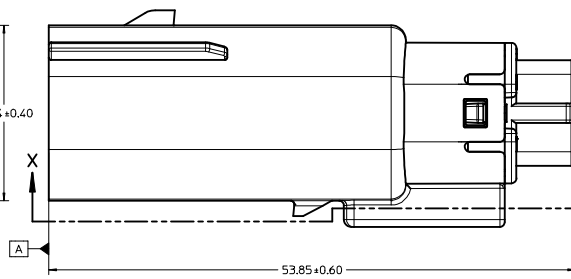
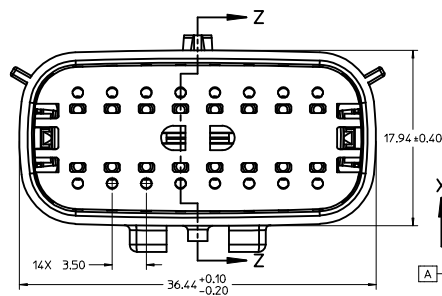
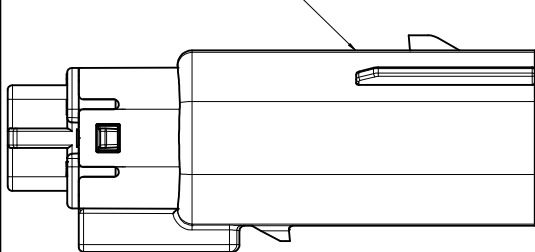


KEY D

| | | | | | | |
|---|-----------------------|--|--------------------|---|--------------|--|
| SEE REV. COLUMN DEC NO: JAU2013-1199 DRAWN BY: 2013/01/30 CHKD: AP APPR: VKOSHY 2013/02/07 | QUALITY SYMBOLS | GENERAL TOLERANCES (UNLESS SPECIFIED) | DIMENSION STYLE | SCALE | DESIGN UNITS | THIRD ANGLE PROJECTION |
| | ▽=0 | mm INCH | MM ONLY | 4:1 | METRIC | ☉ |
| | ▽=0 | 4 PLACES ± --- ± --- | DRAWN BY DATE | | | |
| | ▽=0 | 3 PLACES ± --- ± --- | DGRIFITHS 05-29-03 | | | |
| | 2 PLACES ± 0.10 ± --- | CHECKED BY DATE | | | | MX150 2X8 BLADE SEALED ASSEMBLY MAT SEAL molex |
| | 1 PLACE ± 0.3 ± --- | DGRIFITHS 05-29-03 | | | | |
| | 0 PLACE ± ± | APPROVED BY DATE | | | | MATERIAL NO. SEE BOM DOCUMENT NO. SD-33482-161 |
| | | ANGULAR ± 3 ° | | | | SHEET NO. 2 OF 7 |
| | | DRAFT WHERE APPLICABLE MUST REMAIN WITHIN DIMENSIONS | SIZE D | THIS DRAWING CONTAINS INFORMATION THAT IS PROPRIETARY TO MOLEX INCORPORATED AND SHOULD NOT BE USED WITHOUT WRITTEN PERMISSION | | |

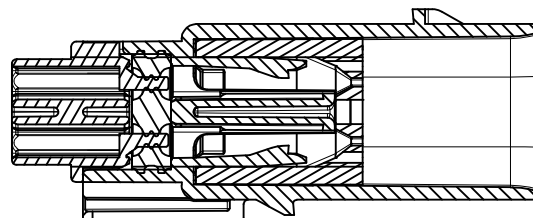
BLADE SEALED ASSEMBLY

OPTIONAL LASER MARKING ON THIS SURFACE SEE NOTE 3g.



PRIMARY LOCK REINFORCEMENT (PLR) SHOWN IN PRE-STAGED POSITION

SECTION Z-Z



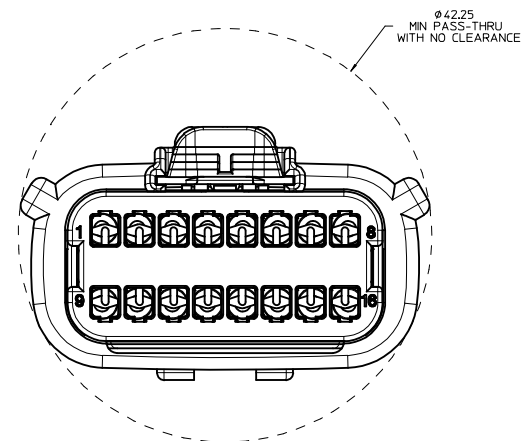
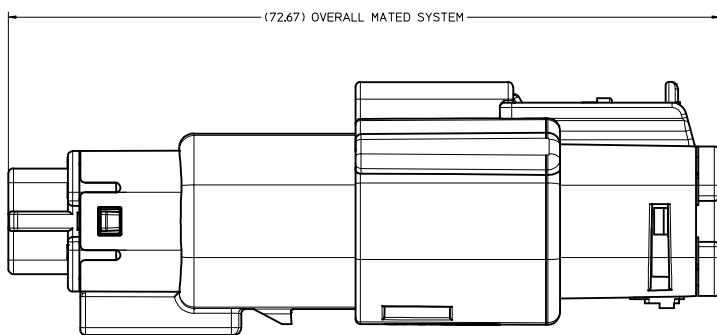
PRIMARY LOCK REINFORCEMENT (PLR) SHOWN IN FINAL-LOCK POSITION

SECTION Y-Y

| | | | | | | | | | | | | | | |
|--|---|--|---|--|---|--|--|--|--|--|---|--|---------------------|--|
| SEE REV. COLUMN ELC NO: UAU2013-1199 DRAWN BY: AE CHKD: APPR: VKOSHY 2013/02/07 DESCRIPTION: | QUALITY SYMBOLS ∇=0 ∇=0 ∇=0 | | GENERAL TOLERANCES (UNLESS SPECIFIED) mm INCH 4 PLACES ± --- ± --- 3 PLACES ± --- ± --- 2 PLACES ± 0.10 ± --- 1 PLACE ± 0.3 ± --- 0 PLACE ± ± | | DIMENSION STYLE MM ONLY DRAWN BY: DGRIFITHS DATE: 05-29-03 CHECKED BY: DATE: DGRIFITHS 05-29-03 APPROVED BY: DATE: VKOSHY 2010/04/06 | | SCALE 4:1 DESIGN UNITS METRIC THIRD ANGLE PROJECTION | | TITLE MX150 2X8 BLADE SEALED ASSEMBLY MAT SEAL molex | | MATERIAL NO. SEE BOM DOCUMENT NO. SD-33482-161 | | SHEET NO. 3 OF 7 | |
| | ANGULAR ± 3 ° DRAFT WHERE APPLICABLE MUST REMAIN WITHIN DIMENSIONS | | SIZE D | | THIS DRAWING CONTAINS INFORMATION THAT IS PROPRIETARY TO MOLEX INCORPORATED AND SHOULD NOT BE USED WITHOUT WRITTEN PERMISSION | | | | | | | | | |

20 19 18 17 16 15 14 13 12 11 10 9 8 7 6 5 4 3 2 1

SYSTEM PACKAGING



| | | | | | | | | | | | | | |
|---|---|--|--|--|---|--|--------------|------------------------|------------------------|---|-------------------------|------------------------------|---------------------|
| SEE REV. COLUMN IEC NO: UAU2013-1199 DRAWN BY: 2013/01/30 CHKD: AF APPR: VKOSHY 2013/02/07 REV DESCRIPTION | QUALITY SYMBOLS ▽=0 ▽=0 ▽=0 | | GENERAL TOLERANCES (UNLESS SPECIFIED) mm INCH 4 PLACES ± --- ± --- 3 PLACES ± --- ± --- 2 PLACES ± 0.10 ± --- 1 PLACE ± 0.3 ± --- 0 PLACE ± ± ANGULAR ± 3 ° DRAFT WHERE APPLICABLE MUST REMAIN WITHIN DIMENSIONS | | DIMENSION STYLE MM ONLY DRAWN BY DATE DGRIFFI THS 05-29-03 CHECKED BY DATE DGRIFFI THS 05-29-03 APPROVED BY DATE VKOSHY 2010/04/06 | | SCALE 4:1 | DESIGN UNITS METRIC | THIRD ANGLE PROJECTION | TITLE MX150 2X8 BLADE SEALED ASSEMBLY MAT SEAL molex | MATERIAL NO. SEE BOM | DOCUMENT NO. SD-33482-161 | SHEET NO. 4 OF 7 |
| | THIS DRAWING CONTAINS INFORMATION THAT IS PROPRIETARY TO MOLEX INCORPORATED AND SHOULD NOT BE USED WITHOUT WRITTEN PERMISSION | | | | | | | | | | | | |
| | SIZE D | | | | | | | | | | | | |
| | SEE BOM | | | | | | | | | | | | |

19 18 17 16 15 14 13 12 11 10 9 8 7 6 5 4 3 2 1

| ASSEMBLY PART NUMBER | COLOR | KEYING OPTION | CAVITY TYPE & STATUS (X = PLUGGED) | | | | | | | | | | | | | | | |
|----------------------|---------|---------------|-------------------------------------|---|---|---|---|---|---|---|---|----|----|----|----|----|----|----|
| | | | 1 | 2 | 3 | 4 | 5 | 6 | 7 | 8 | 9 | 10 | 11 | 12 | 13 | 14 | 15 | 16 |
| 33482-1651 | LT.GRAY | B | | | | | | | | | | | | | | | X | |
| 33482-1652 | LT.GRAY | B | | | | | | X | X | X | | | | | | | X | |
| 33482-1653 | BLACK | A | | | | | | | | | X | | | | | | X | |
| 33482-1654 | BLACK | A | | | | X | | | | X | | | X | | | | | |
| 33482-1655 | LT.GRAY | B | | | | X | | | | X | | | X | | X | | | |
| 33482-1656 | LT.GRAY | B | | | | | | | | X | | | | | | X | | |
| 33482-1657 | BLACK | A | X | | | | | | | X | | | | | | | | |
| 33482-1658 | LT.GRAY | B | | X | | X | | X | X | X | | | X | | X | | | |
| 33482-1659 | LT.GRAY | B | | X | | | | X | X | X | | | | | | X | | |
| 33482-1660 | LT.GRAY | B | | X | | | | | | X | | | | | | X | | |
| 33482-1661 | BLACK | A | X | X | | X | | | | X | | | | X | | | | |
| 33482-1662 | LT.GRAY | B | | X | | X | | | | X | | | | X | | X | | |
| 33482-1663 | BLACK | A | X | | | | | | | X | | | | | | | | |
| 33482-1664 | BLACK | A | | | X | | | | | X | X | | | | | X | X | |
| 33482-1665 | BLACK | A | | | X | X | | X | X | X | X | | X | | | X | X | |
| 33482-1666 | BLACK | A | X | | | | | X | X | X | | | | | X | X | X | |
| 33482-1667 | BLACK | A | X | | | X | X | | | X | | | | X | X | X | X | |
| 33482-1668 | BLACK | A | X | | | X | X | | | X | X | | | X | X | X | X | |
| 33482-1669 | BLACK | A | X | | | X | | | | X | | | | X | | X | | |
| 33482-1670 | BLACK | A | X | | X | X | X | X | X | X | | X | X | X | X | X | | |
| 33482-1671 | BLACK | A | X | | X | X | X | X | X | X | | X | X | X | X | | | |
| 33482-1672 | BLACK | A | | | X | | | | | X | | | | | | | | |
| 33482-1673 | BLACK | A | X | | | | | X | X | X | | | | | | | | |
| 33482-1674 | BLACK | A | X | | | | | X | X | | | | | | | | | |
| 33482-1675 | BLACK | A | X | | | X | X | | | | | X | | | | | | |
| 33482-1676 | BLACK | A | | | | X | X | X | X | | | | X | | X | | | |
| 33482-1677 | BLACK | A | | | | X | X | X | X | | | X | | X | | | | |
| 33482-1678 | BLACK | A | | | | X | X | X | X | | | X | | X | X | | | |
| 33482-1679 | BLACK | A | | | | X | X | X | X | | | X | X | X | X | | | |
| 33482-1680 | BLACK | A | | | | X | X | X | X | | | X | X | X | X | X | | |
| 33482-1681 | BLACK | A | | | | | | | X | | | | | | | X | | |
| 33482-1682 | BLACK | A | | | | X | X | X | | | | | | | | X | X | |
| 33482-1683 | BLACK | A | | | | X | X | X | X | | | | | | | X | X | |
| 33482-1684 | BLACK | A | X | X | X | X | X | X | X | | | | | X | | X | X | |
| 33482-1685 | BLACK | A | | | | | | | | | | | | | | X | X | X |
| 33482-1686 | BLACK | A | | | | | | | X | | | | | | X | X | X | X |
| 33482-1687 | BLACK | A | | | | | | X | X | | | | X | X | X | X | | |
| 33482-1688 | BLACK | A | | | | | | X | X | | | | X | X | X | X | | |
| 33482-1689 | BLACK | A | | | | | | X | X | | | | X | | X | | | |
| 33482-1690 | BLACK | A | | | | | | X | X | | | | X | | X | | | |
| 33482-1691 | BLACK | A | | | | X | | | | | | | X | | X | | | |
| 33482-1692 | BLACK | A | X | | | | | | | X | X | | | | | X | X | |
| 33482-1693 | BLACK | A | X | | | | | | | X | | | | | | X | | |
| 33482-1694 | BLACK | A | X | | | X | X | X | X | X | X | | X | | X | X | X | |
| 33482-1695 | BLACK | A | X | | | X | X | X | X | X | X | | X | | X | X | X | |
| 33482-1700 | BLACK | A | X | X | X | X | X | X | X | X | X | | X | X | X | X | X | X |
| 33482-1701 | BLACK | A | X | X | X | X | X | X | X | X | X | | X | X | X | X | X | X |
| 33482-1702 | BLACK | A | | | | | | X | X | X | X | X | X | X | X | X | X | X |
| 33482-1703 | BLACK | A | | | | | | X | X | X | X | X | X | X | X | X | X | X |
| 33482-1704 | BLACK | A | X | X | X | X | X | X | X | X | X | | | | X | X | X | X |
| 33482-1705 | BLACK | A | | | | | | | | | X | X | X | X | X | X | X | X |
| 33482-1706 | BLACK | A | | | | | | | | | X | X | X | X | X | X | X | X |
| 33482-1707 | BLACK | A | | | | | | X | X | X | X | | | | | | | |
| 33482-1708 | BLACK | A | | | | | | | | | | | | | X | X | X | |
| 33482-1709 | BLACK | A | | | | | | | | | | | X | X | X | X | X | |
| 33482-1710 | BLACK | A | X | X | X | X | X | X | X | X | X | | | | | | | |
| 33482-1711 | LT.GRAY | B | X | X | X | X | X | X | X | X | X | | X | | X | X | X | |
| 33482-1712 | LT.GRAY | B | X | X | X | X | X | X | X | X | X | | X | | X | X | X | |

| | | | | | | |
|--|-----------------|---------------------------------------|--|------------------|---|--|
| SEE REV. COLUMN EEC NO: UAU2013-199 DRAWN BY: AE CHKD: CHKD APPR: IKOSHY 2013/02/07 | QUALITY SYMBOLS | GENERAL TOLERANCES (UNLESS SPECIFIED) | DIMENSION STYLE | SCALE | DESIGN UNITS | THIRD ANGLE PROJECTION |
| | ▽=0 | 4 PLACES ± mm | MM ONLY | DRAWN BY DATE | METRIC | MX150 2X8 BLADE SEALED ASSEMBLY MAT SEAL molex MATERIAL NO. SD-33482-161 DOCUMENT NO. 6 OF 7 |
| | ▽=0 | 3 PLACES ± 0.10 | DGR1FF1THS | CHECKED BY DATE | | |
| | ▽=0 | 2 PLACES ± 0.3 | DGR1FF1THS | APPROVED BY DATE | | |
| ▽=0 | 1 PLACE ± | VKOSHY | 2010/04/06 | | | |
| | | ANGULAR ± 3° | DRAFT WHERE APPLICABLE MUST REMAIN WITHIN DIMENSIONS | SIZE D | THIS DRAWING CONTAINS INFORMATION THAT IS PROPRIETARY TO MOLEX INCORPORATED AND SHOULD NOT BE USED WITHOUT WRITTEN PERMISSION | |

| ASSEMBLY PART NUMBER | COLOR | KEYING OPTION | CAVITY TYPE & STATUS (X = PLUGGED) | | | | | | | | | | | | | | | |
|----------------------|---------|---------------|-------------------------------------|---|---|---|---|---|---|---|---|----|----|----|----|----|----|----|
| | | | 1 | 2 | 3 | 4 | 5 | 6 | 7 | 8 | 9 | 10 | 11 | 12 | 13 | 14 | 15 | 16 |
| 33482-1713 | BLACK | A | | X | X | X | | | | X | X | | | | | X | X | |
| 33482-1714 | BLACK | A | | X | X | X | X | | | X | X | X | X | X | | X | X | |
| 33482-1715 | BLACK | A | X | X | X | X | | | X | X | X | X | X | X | | X | X | |
| 33482-1716 | BLACK | A | X | X | X | X | | | | X | X | X | X | X | | | X | |
| 33482-1717 | BLACK | A | X | X | X | X | X | X | X | | | | | | X | X | X | |
| 33482-1718 | BLACK | A | | | | | | | | | | | | | X | X | X | |
| 33482-1719 | BLACK | A | X | | | | X | X | X | X | X | | | | | X | X | |
| 33482-1720 | BLACK | A | | | | | | | | | | | X | | | X | | |
| 33482-1721 | LT.GRAY | B | | | | X | | X | X | | | X | X | X | X | | | |
| 33482-1722 | LT.GRAY | B | X | X | X | X | | | X | X | X | X | X | X | X | X | X | |
| 33482-1723 | BLACK | A | X | X | X | X | X | X | | | X | | | | X | X | X | |
| 33482-1724 | BLACK | A | | | | | | | | X | | | | | X | X | X | |
| 33482-1725 | DK.GRAY | C | | | | | | | | | | | | | | | | |
| 33482-1726 | ST.GRAY | D | | | | | | | | | | | | | | | | |
| 33482-1727 | DK.GRAY | C | X | X | X | X | X | X | X | X | X | X | X | X | X | X | X | |
| 33482-1728 | ST.GRAY | D | X | X | X | X | X | X | X | X | X | X | X | X | X | X | X | |
| 33482-1729 | BLACK | A | | | | | | X | X | | | X | X | X | X | X | X | |
| 33482-1730 | BLACK | A | | | | X | X | X | X | X | X | X | X | X | X | X | X | |
| 33482-1731 | BLACK | A | | | | | | | X | X | X | X | X | X | X | X | X | |
| 33482-1732 | LT.GRAY | B | | | | | X | X | X | | X | | | | | | | |
| 33482-1733 | LT.GRAY | B | X | X | X | X | X | | X | X | X | X | X | X | X | X | X | |
| 33482-1734 | LT.GRAY | B | | | | | X | | X | X | X | X | X | | X | X | | |
| 33482-1735 | BLACK | A | | | | | X | | | X | X | X | X | | | | | |
| 33482-1736 | BLACK | A | X | X | X | X | X | | | | | | | X | X | | | |
| 33482-1737 | BLACK | A | X | X | X | X | X | | | X | X | X | X | X | | | | |

AE
AE
AE

| | | | | | |
|---|--|--|----------------------------|--|------------------------------|
| SEE REV. COLUMN EC NO: UAU2013-1199 DRAWN BY: AT CHKD: APPR:VKOSHY 2013/01/30 2013/02/07 | QUALITY SYMBOLS ▽=0 ▽=0 ▽=0 | GENERAL TOLERANCES (UNLESS SPECIFIED) mm INCH 4 PLACES ± .005 ± .0005 3 PLACES ± .01 ± .0005 2 PLACES ± 0.10 ± .0005 1 PLACE ± 0.3 ± .0005 0 PLACE ± ± | DIMENSION STYLE MM ONLY | SCALE DESIGN UNITS METRIC | THIRD ANGLE PROJECTION |
| | DRAFT WHERE APPLICABLE MUST REMAIN WITHIN DIMENSIONS | DRAWN BY: DGRIFITHS CHECKED BY: DGRIFITHS APPROVED BY: VKOSHY DATE: 05-29-03 DATE: 05-29-03 DATE: 2010/04/06 | MATERIAL NO. SEE BOM | TITLE MX150 2X8 BLADE SEALED ASSEMBLY MAT SEAL molex | DOCUMENT NO. SD-33482-161 |