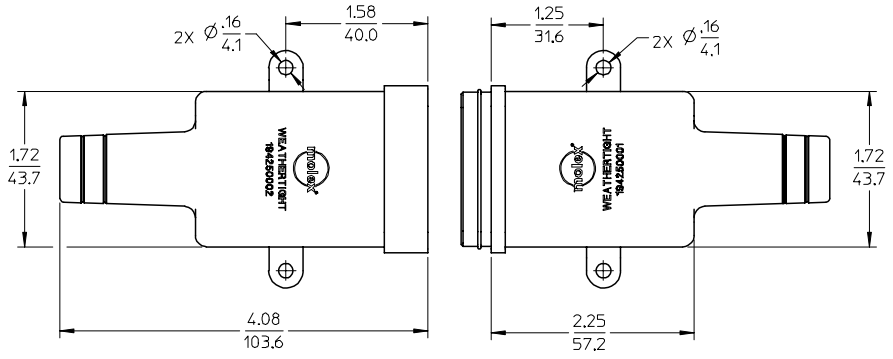
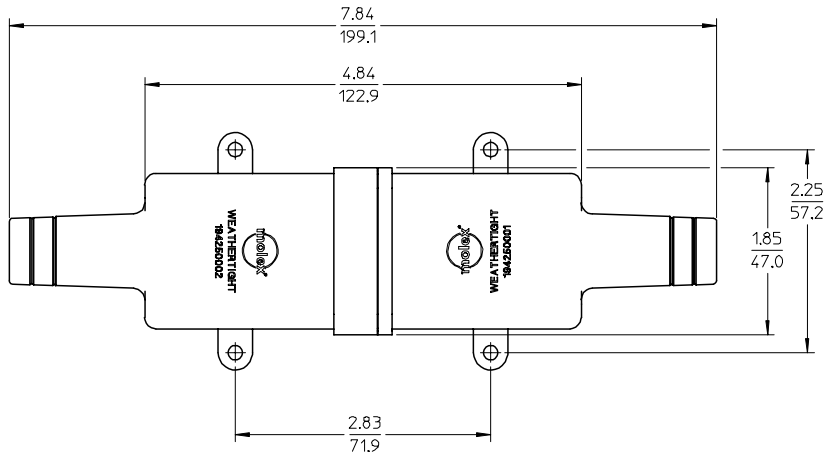
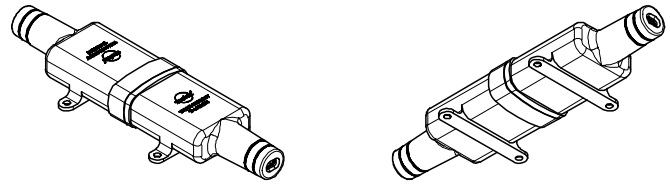
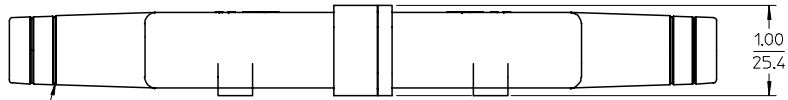


J  
I  
H  
G  
F  
E  
D  
C  
B  
A

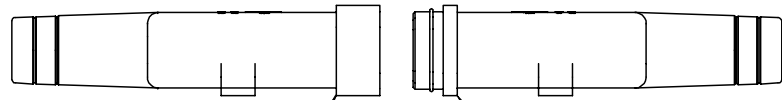
J  
I  
H  
G  
F  
E  
D  
C  
B  
A



ASSEMBLED VIEWS



4X GROOVE PROVIDED AS CUT OFF GUIDE FOR USER WHEN USING THICK INSULATION TYPE CABLE.



194250002 FEMALE BOOT

194250001 MALE BOOT

- NOTES:
1. MATERIAL: THERMOPLASTIC ELASTOMER. COLOR: BLACK. UV RESISTANCE: UL "F1".
  2. PARTS ARE PACKAGED 15 EACH PER CARTON.

EC NO: ETC2004-0150 DRWN: DMYRICK 2004/01/21 CHKD: JPAWLICK 2004/01/21 APPR: RDEROSS 2004/01/21	QUALITY SYMBOLS	GENERAL TOLERANCES (UNLESS SPECIFIED)	SCALE 1:1	DESIGN UNITS INCH	THIRD ANGLE PROJECTION	REVISE ON CAD ONLY															
	▽ - 0 ◻ - 0	<table border="1"> <tr> <th></th> <th>mm</th> <th>INCH</th> </tr> <tr> <td>4 PLACES</td> <td>± .005</td> <td>± .0005</td> </tr> <tr> <td>3 PLACES</td> <td>± .005</td> <td>± .0005</td> </tr> <tr> <td>2 PLACES</td> <td>± .005</td> <td>± .0005</td> </tr> <tr> <td>1 PLACE</td> <td>± 0.005</td> <td>± .0005</td> </tr> </table>		mm	INCH	4 PLACES	± .005	± .0005	3 PLACES	± .005	± .0005	2 PLACES	± .005	± .0005	1 PLACE	± 0.005	± .0005	DIMENSION STYLE IN/MM		TITLE WEATHERTIGHT MALE/FEMALE BOOT ASSY, 16-12 AWG, ROMEX CABLE, SC	
			mm	INCH																	
	4 PLACES	± .005	± .0005																		
3 PLACES	± .005	± .0005																			
2 PLACES	± .005	± .0005																			
1 PLACE	± 0.005	± .0005																			
	ANGULAR ± 2 °	DRAFT WHERE APPLICABLE	DRAWN BY DATE DMYRICK 04/01/06		MATERIAL NO. DOCUMENT NO. SHEET NO. SEE DRAWING SD-19425-001 1 OF 1																
	MUST REMAIN WITHIN DIMENSIONS	APPROVED BY DATE RDEROSS 04/01/06		MATERIAL NO. DOCUMENT NO. SHEET NO. SEE DRAWING SD-19425-001 1 OF 1																	