

V3L-1229

M

DRAWING NUMBER

7

ISSUE

8

PAGE 1 OF 1

REPLACES

RELEASE NO. PR-5389

CHECK

REVISIONS

A

C024699

MBS

30 JUL 69

B

C026661

SRH

30 DEC 69

C

C026861

MBS

22 JAN 70

D

PR 5389

GCH

19 NOV 75

E

CO-76302

JAL

30 NOV 93

F

CO-84847

TSM

9 JUL 98

26 MAR 68

26 MAR 68

26 MAR 68

26 MAR 68

26 MAR 68

26 MAR 68

26 MAR 68

26 MAR 68

26 MAR 68

26 MAR 68

26 MAR 68

26 MAR 68

26 MAR 68

26 MAR 68

26 MAR 68

26 MAR 68

26 MAR 68

26 MAR 68

26 MAR 68

26 MAR 68

26 MAR 68

26 MAR 68

26 MAR 68

26 MAR 68

26 MAR 68

26 MAR 68

26 MAR 68

26 MAR 68

26 MAR 68

26 MAR 68

26 MAR 68

26 MAR 68

26 MAR 68

26 MAR 68

26 MAR 68

26 MAR 68

26 MAR 68

26 MAR 68

26 MAR 68

26 MAR 68

26 MAR 68

26 MAR 68

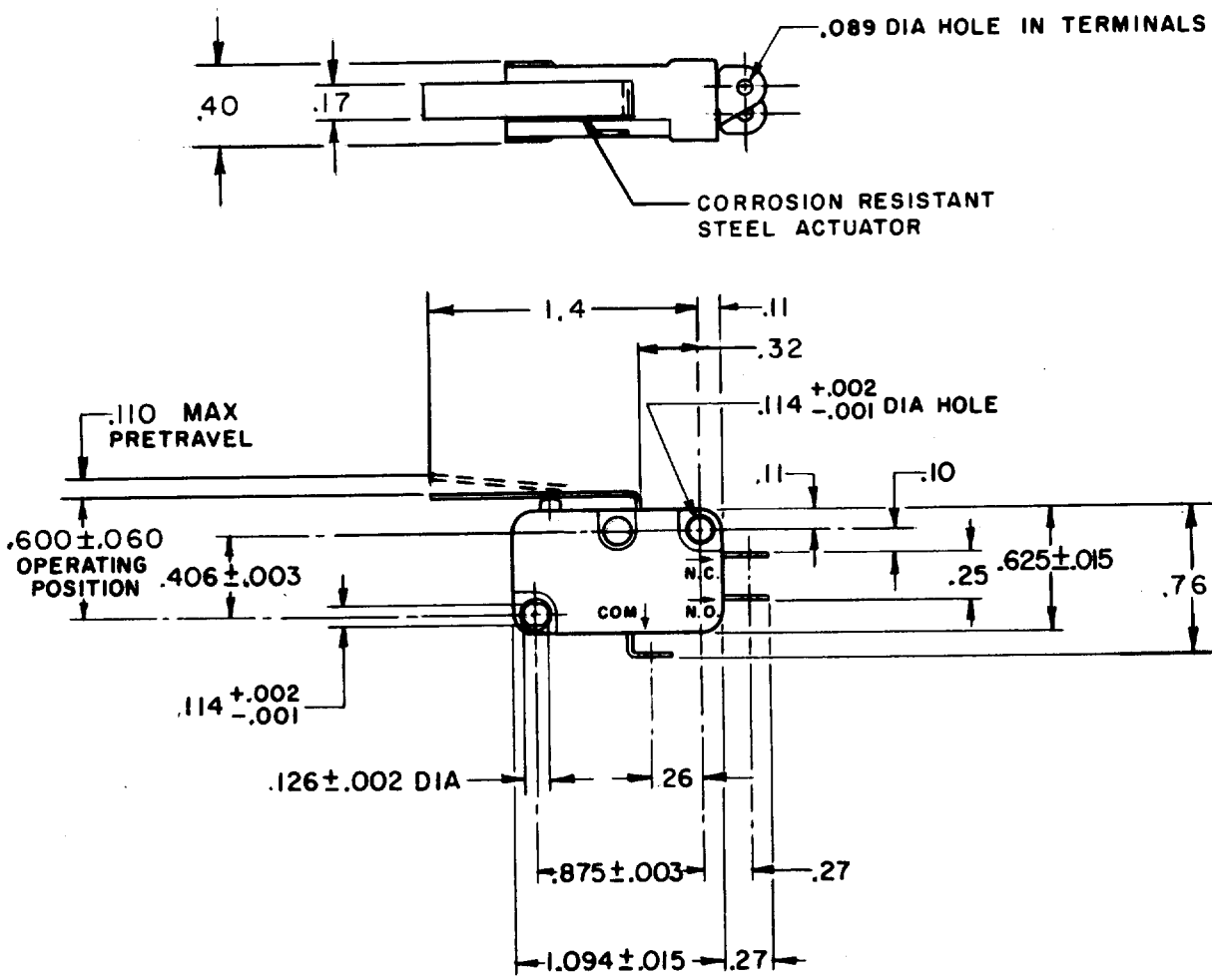
26 MAR 68

26 MAR 68

26 MAR 68

26 MAR 68

26 MAR 68



THIS DRAWING COVERS A PROPRIETARY ITEM AND IS THE PROPERTY OF MICRO SWITCH, A DIVISION OF MINNEAPOLIS-HONEYWELL REGULATOR CO. THIS DRAWING IS NOT TO BE COPIED OR USED WITHOUT THE APPROVAL OF MICRO SWITCH.

CHARACTERISTICS	ELECTRICAL DATA	SCALE FULL
OPERATING FORCE --- 35 GRAM MAX	CONTACT ARRANGEMENT S P D T	DO NOT SCALE PRINT
RELEASE FORCE --- 4 GRAM MIN	-L112- 10A - 1/3HP - 125 OR 250 VAC	UNLESS OTHERWISE NOTED
DIFFERENTIAL TRAVEL --- .030 MAX	1/2A - 125 VDC; 1/4A - 250 VDC	DIMENSIONS ARE IN INCHES
OVERTRAVEL --- .090 MIN	4A - 125 VAC "L"	TOLERANCES ARE:
RELEASE TRAVEL --- .017 MIN		ONE PLACE (.0) ±.030
		TWO PLACE (.00) ±.015
		THREE PLACE (.000) ±.005
		ANGLES ±
		WEIGHT

FO-30378

DRAWN

MBS 25 MAR 68

CHECK

LSD

CHECK

GCH

SRH

MBS

CHECK

26 MAR 68

30 DEC 69

30 JUL 69

26 MAR 68

26 MAR 68

26 MAR 68

26 MAR 68

26 MAR 68

26 MAR 68

26 MAR 68

26 MAR 68

26 MAR 68