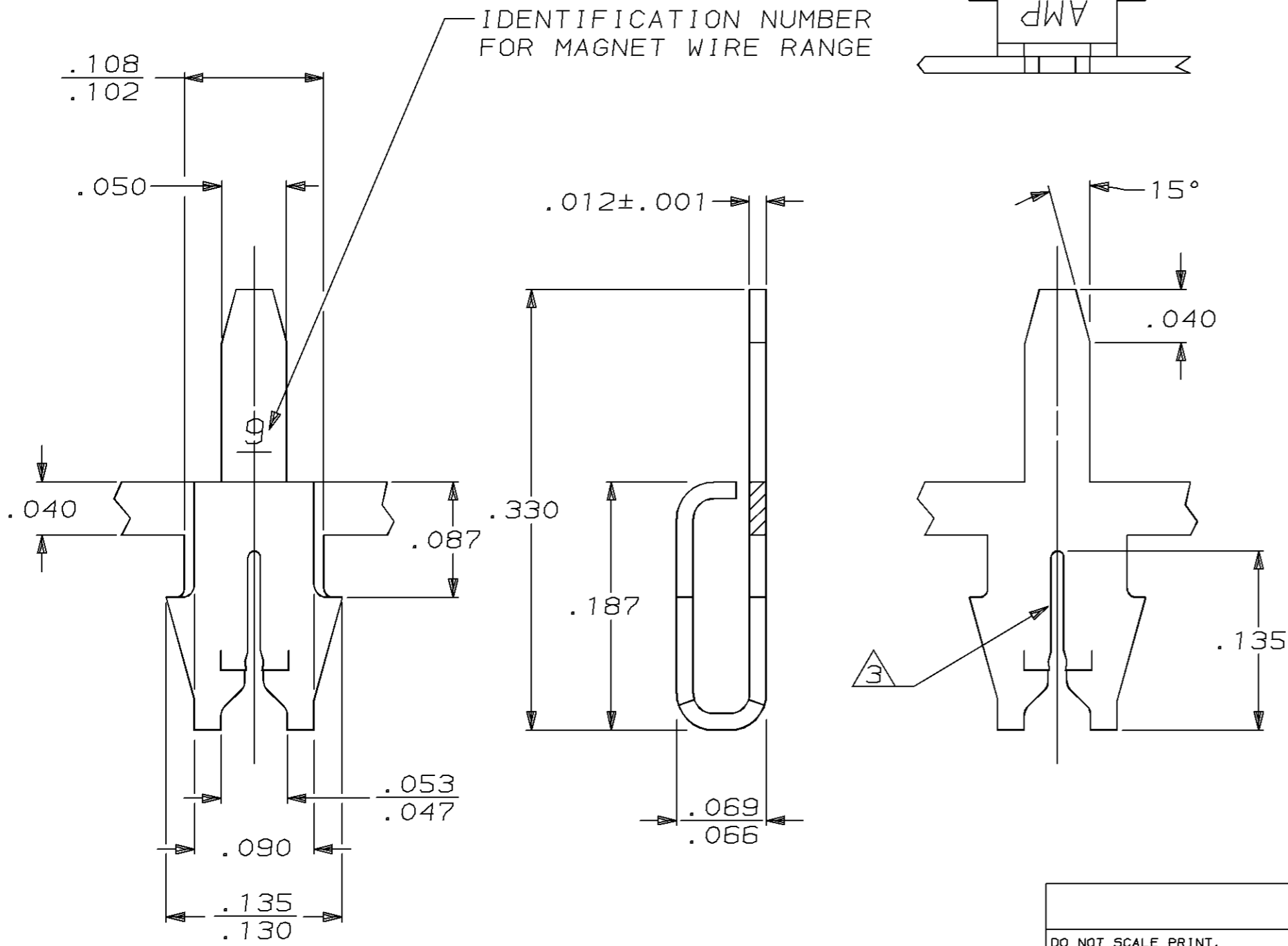


THIS DRAWING IS UNPUBLISHED. RELEASED FOR PUBLICATION, 19 .
 © COPYRIGHT 19 BY AMP INCORPORATED. ALL INTERNATIONAL RIGHTS RESERVED.

LOC AF	DIST 50	P	F	REVISIONS				
				ZONE	LTR	DESCRIPTION	DATE	APPD
					H	REV PER 0710-0196-96	18JUN96	RG/NN



- ① MAG-MATE CAVITY SPECIFICATION.
- ② CONTINUOUS STRIP ON REELS WITH TERMINALS LOCATED ON .200 CENTERS.
- ③ SLOT ACCEPTS #27-#25 AWG COPPER MAGNET WIRE.
- ④ REELED FOR APPLICATION THROUGH MAG-MATE INSERTION MACHINE.
- ⑤ REELED FOR INSERTION INTO PRINTED CIRCUIT BOARD.
- ⑥ 0.002032[.000080] MIN TIN PER MIL-T-10727 OVER 0.00127[.000050] MIN NICKEL PER QQ-N-290

DO NOT SCALE PRINT. UNLESS SPECIFIED DIMENSIONS IN INCHES. TOLERANCES ON: 2 PLC DEC ± - 3 PLC DEC ± .010 ANGLES ± -		DR 11/21/88 M.S. FEHER	⑤	62438-2
MATERIAL #4 HARD BRASS		CHK 11/27/88 JR RUTH	④	62438-1
FINISH ⑥		APPD 11/28/88 NELSON E. NEFF	PART NO	
		APPD 11/28/88 C.G. ATHERTON	AMP INCORPORATED Harrisburg, Pa. 17105	
		PRODUCT SPEC -	NAME TERMINAL, POSTED, MAG-MATE™	
		APPLICATION SPEC 114-2069 ①	SIZE B	FSCM NO 00779
		WEIGHT -	DRAWING NO 62438	SCALE 10:1
			SHEET 1 OF 1	