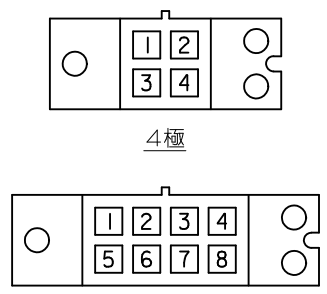
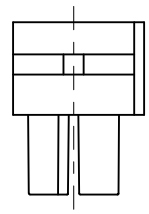
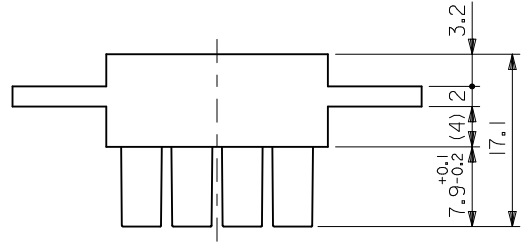


パネル切抜寸法 (参考)

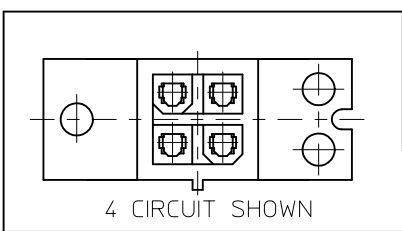
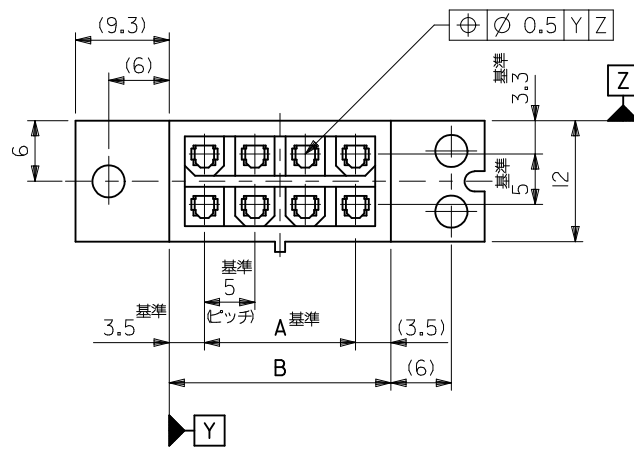
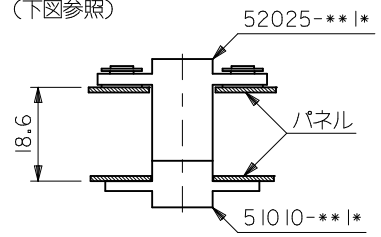


回路レイアウト図



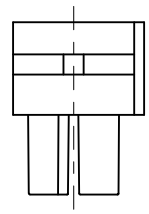
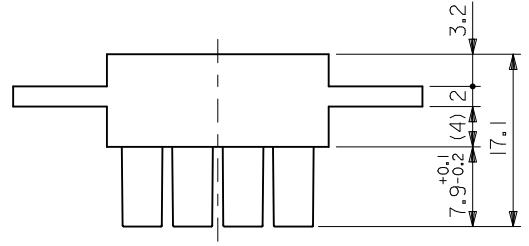
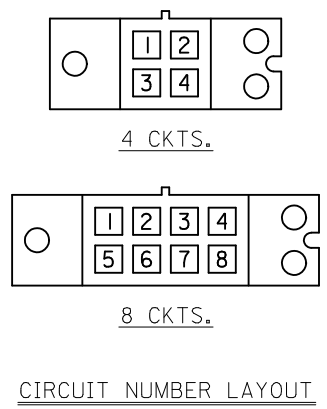
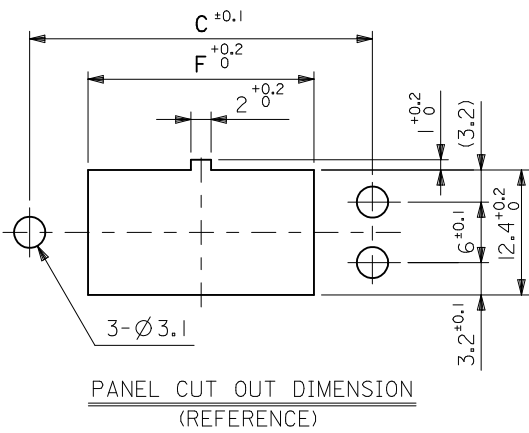
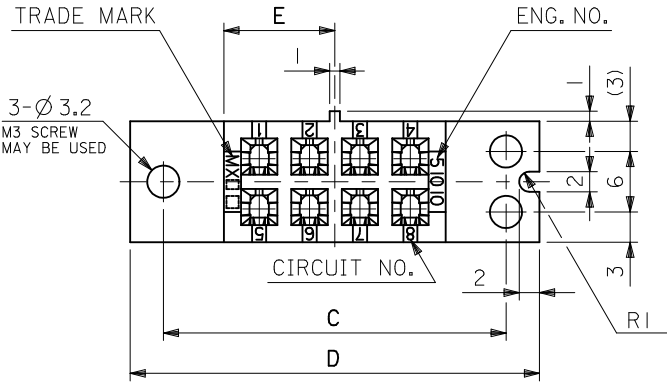
注記

1. 適用ターミナル: 5556 シリーズ
2. 嵌合相手: 52025-***
3. パネル外一外寸法 18.6 (下図参照)



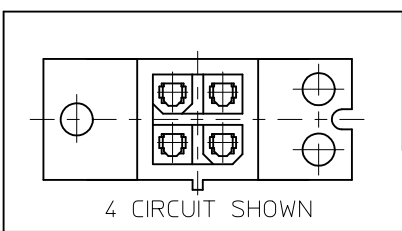
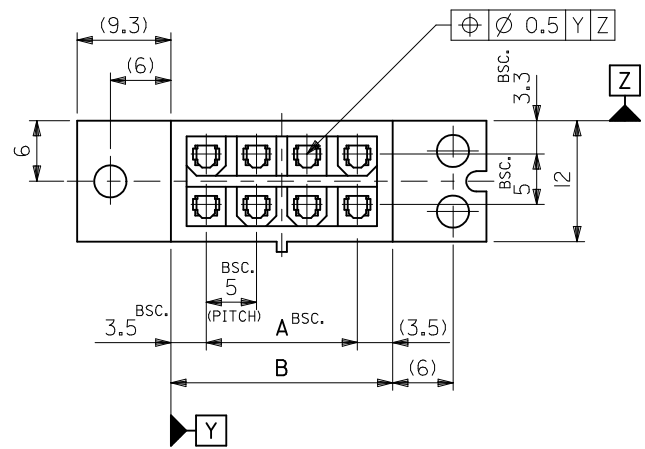
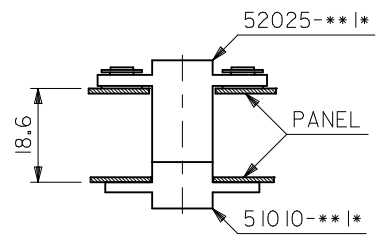
22.4	11	40.6	34	22	15	51010-0811	黒	8
12.4	6	30.6	24	12	5	51010-0411	黒	4
F	E	D	C	B	A	ENG. NO.	色	極数

ADD 4 CKT VIEW EC NO: UCP2012-1179 DRWN: NGUYEN 2011/10/13 CHKD: JBELL 2011/10/13 APPR: FSM ITH 2011/10/20	GENERAL TOLERANCES (UNLESS SPECIFIED)		DIMENSION STYLE MM ONLY		SCALE 2:1		DESIGN UNITS METRIC		THIRD ANGLE PROJECTION	
	10 UNDER	±0.2	DRAWN BY H. HIRAMOTO		DATE '89/11/22		TITLE IMP REC. HOUSING			
	10 OVER 30 UNDER	±0.25	CHECKED BY M. FUKUSHIMA		DATE '90/10/18		MATERIAL NO.		SHEET NO.	
	30 OVER	±0.3	APPROVED BY M. ENOMOTO		DATE '90/10/18		DOCUMENT NO. SD-51010-001		1 OF 2	
REV E1	ANGULAR ±3 ° DRAFT WHERE APPLICABLE MUST REMAIN WITHIN DIMENSIONS		SIZE A3		THIS DRAWING CONTAINS INFORMATION THAT IS PROPRIETARY TO MOLEX INCORPORATED AND SHOULD NOT BE USED WITHOUT WRITTEN PERMISSION					



NOTES

- 1. APPLICABLE TERMINAL : 5556 SERIES
- 2. MATES WITH : 52025-***I*
- 3. BETWEEN PANEL-PANEL DIMENSION : 18.6 (SEE BELOW FIGURE)



22.4	11	40.6	34	22	15	51010-0811	BLACK	8
12.4	6	30.6	24	12	5	51010-0411	BLACK	4
F	E	D	C	B	A	ENG. NO.	COLOR	NO. OF CKTS.

ADD 4 CKT VIEW EC NO: UCP2012-1179 DRWN: NGUYEN 2011/10/13 CHKD: JBELL 2011/10/13 APPR: FSM ITH 2011/10/20	GENERAL TOLERANCES (UNLESS SPECIFIED)		DIMENSION STYLE MM ONLY		SCALE 2:1		DESIGN UNITS METRIC		THIRD ANGLE PROJECTION	
	10 UNDER	±0.2	DRAWN BY		DATE		TITLE		IMP REC. HOUSING	
	10 OVER 30 UNDER	±0.25	H. HIRAMOTO		'89/11/22					
	30 OVER	±0.3	CHECKED BY		DATE					
	ANGULAR ±3 °	APPROVED BY		DATE		MOLEX INCORPORATED				
	DRAFT WHERE APPLICABLE MUST REMAIN WITHIN DIMENSIONS	M. ENOMOTO		'90/10/18		DOCUMENT NO.		SD-51010-001		
		MATERIAL NO.		SEE TABLE				SHEET NO.		
		SIZE		A3		THIS DRAWING CONTAINS INFORMATION THAT IS PROPRIETARY TO MOLEX INCORPORATED AND SHOULD NOT BE USED WITHOUT WRITTEN PERMISSION		2 OF 2		