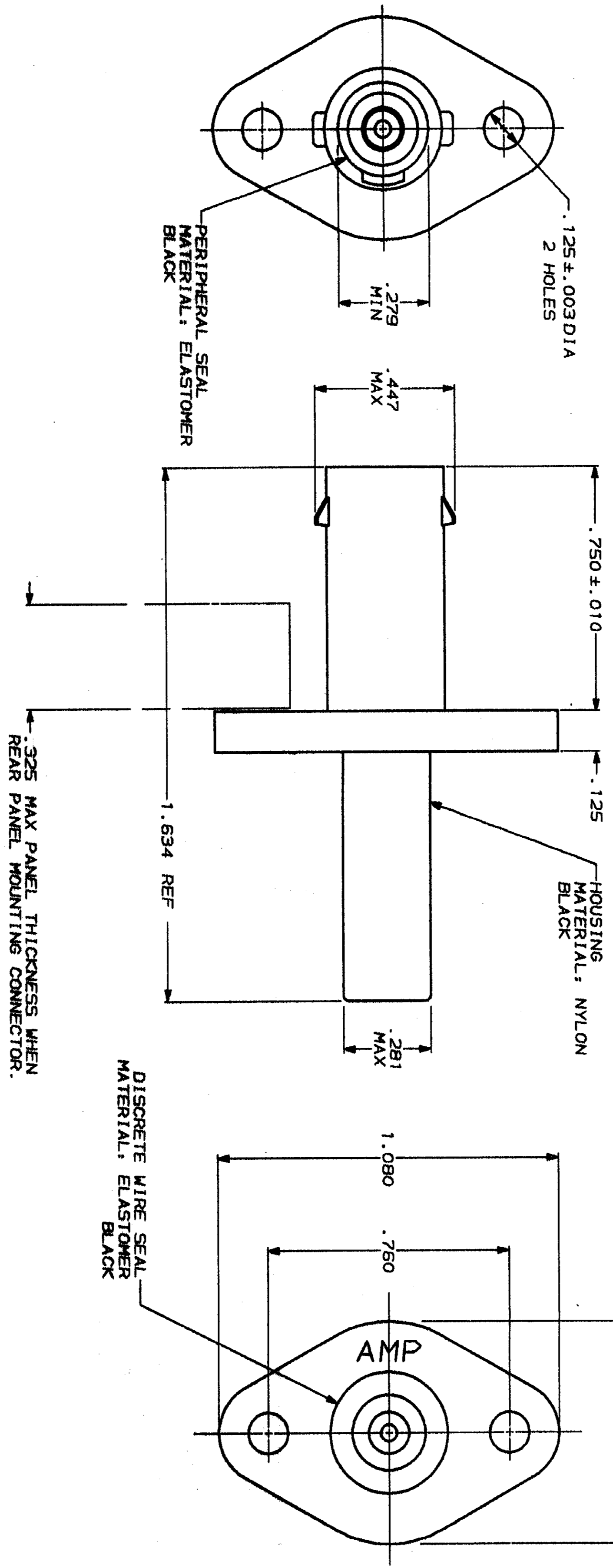
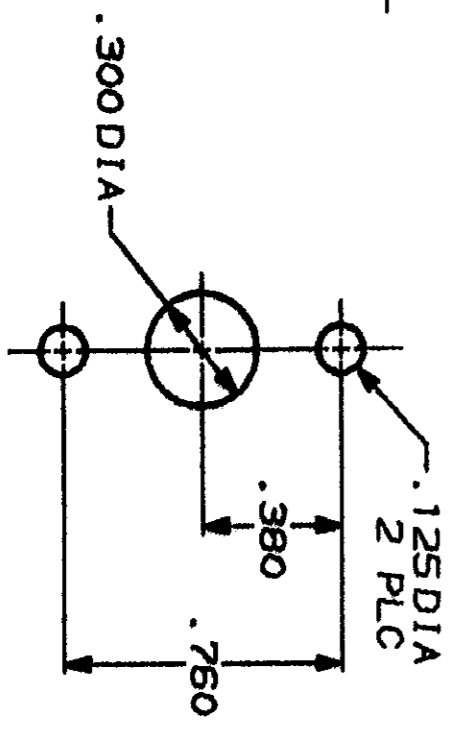


DRAWING MADE IN THIRD ANGLE PROJECTION
 THIS DRAWING IS UNPUBLISHED. RELEASED FOR PUBLICATION BY AMP INCORPORATED. ALL INTERNATIONAL RIGHTS RESERVED.
 © COPYRIGHT 1979

REV. NO.	DATE	APP'D
23	AD	39
ZONE	LTR	REVISION
6	REPAIR	
DESCRIPTION	DATE	APP'D
	8-17-80	MS



1. WIRE INSULATION SEALING RANGE .070-.130 DIA.
2. THIN MEMBRANE PERMISSIBLE ON SMALL DIAMETER OF WIRE SEALS.



DO NOT SCALE PRINT. UNLESS SPECIFIED DIMENSIONS IN INCHES TOLERANCES ON: 2 PLC DEC ± .005 3 PLC DEC ± .005 ANGLES ± .005		DR 6-17-80 J GALLUCI BS	DATE 1-2-91
FINISH SEE CALLOUTS		CHK [Signature]	DATE 1-2-91
MATERIAL SEE CALLOUTS		APP'D [Signature]	DATE 1/30/51
APPLICATION SPEC		PRODUCT SPEC	
WEIGHT			
SIZE C	FSCN NO 00779	DRAWING NO 207982	
SCALE 4:1		SHEET 1 OF 1	

207982-1
 PART NUMBER

AMP INCORPORATED
 HARTFORD, CT 06185

ASSEMBLY, FLANGE RECEPTACLE, SHELL SIZE #5, SINGLE POSITION

CUSTOMER DRAWING