

**DIGITUS CAT 5e, Class D Patch Panel**

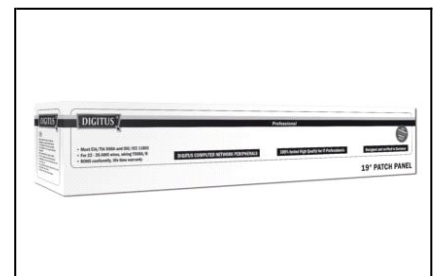
DN-91524S 4016032241522



**DIGITUS CAT 5e, Class D Patch Panel, shielded**  
**24-port RJ45, 8P8C, LSA, 1U, Rack Mount Color grey RAL 7035**

**Best performance and link quality for your network**

- 1 ISO/IEC 11801 and EN 50173
- 1 RJ45 jacks
- 1 Cable installation via LSA strips, color codes based on EIA/TIA 568 A & B
- 1 Suitable for 483mm (19") Rack Mount
- 1 Material housing: SECC, 1,5mm ElectroGalvanized, Cold-rolled Steel accc. EN1.4301, UNS S30400, AISI 304 and LMSAD110
- 1 Category: CAT 5e
- 1 Ports: 24
- 1 Color: light grey, RAL 7035
- 1 Units: 1
- 1 Dimensions (HxWxD): 44,483,109 mm



**DIGITUS CAT 5e, Class D Patch Panel**

DN-91524S 4016032241522

→ **Logistics**

	Number (pcs)	Weight (kg)	Depth (cm)	Width (cm)	Height (cm)	cm <sup>3</sup>
Packaging Unit Carton	8	14,08	58,00	33,00	33,00	63162,00
Packaging Unit Inside	1	1,76	8,00	56,00	15,00	6720,00
Packaging Unit Single	1	1,76	8,00	56,00	15,00	6720,00
Net single without Packaging	1	0,00	4,50	48,50	11,00	2400,75

→ **Packaging type**



Country of origin: China