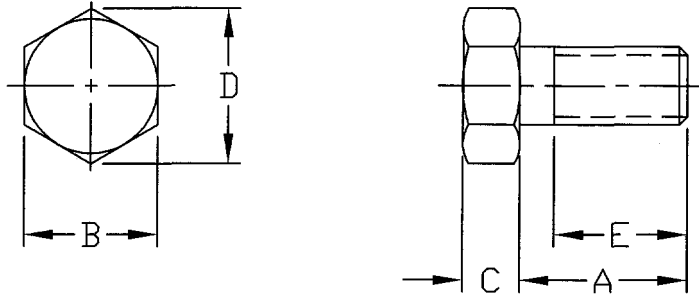


1. PART NUMBER AND CHARACTERISTICS



| TE Part No | Rev | Thread | A | B | C | D | E |
|------------|-----|--------|----|----|-----|-------|----|
| 18022-1 | B | M5 | 8 | 8 | 3.5 | 8.79 | 8 |
| 18022-2 | B | M5 | 10 | 8 | 3.5 | 8.79 | 10 |
| 18022-3 | B | M5 | 12 | 8 | 3.5 | 8.79 | 12 |
| 18022-4 | B | M5 | 16 | 8 | 3.5 | 8.79 | 16 |
| 18022-5 | B | M5 | 20 | 8 | 3.5 | 8.79 | 16 |
| 18022-6 | B | M5 | 25 | 8 | 3.5 | 8.79 | 16 |
| 18022-7 | B | M5 | 30 | 8 | 3.5 | 8.79 | 16 |
| 18022-8 | B | M5 | 40 | 8 | 3.5 | 8.79 | 16 |
| 18022-9 | B | M5 | 50 | 8 | 3.5 | 8.79 | 16 |
| 1-18022-0 | B | M6 | 10 | 10 | 4 | 11.05 | 10 |
| 1-18022-1 | B | M6 | 12 | 10 | 4 | 11.05 | 12 |
| 1-18022-2 | B | M6 | 16 | 10 | 4 | 11.05 | 16 |
| 1-18022-3 | A | M6 | 20 | 10 | 4 | 11.05 | 18 |
| 1-18022-4 | A | M6 | 25 | 10 | 4 | 11.05 | 18 |
| 1-18022-5 | A | M6 | 30 | 10 | 4 | 11.05 | 18 |
| 1-18022-6 | A | M6 | 40 | 10 | 4 | 11.05 | 18 |
| 1-18022-7 | A | M6 | 50 | 10 | 4 | 11.05 | 18 |
| 1-18022-8 | A | M6 | 60 | 10 | 4 | 11.05 | 18 |
| 1-18022-9 | A | M6 | 70 | 10 | 4 | 11.05 | 18 |
| 2-18022-0 | B | M8 | 16 | 13 | 5.3 | 14.38 | 16 |
| 2-18022-1 | B | M8 | 20 | 13 | 5.3 | 14.38 | 20 |
| 2-18022-2 | B | M8 | 25 | 13 | 5.3 | 14.38 | 22 |
| 2-18022-3 | B | M8 | 30 | 13 | 5.3 | 14.38 | 22 |
| 2-18022-4 | B | M8 | 40 | 13 | 5.3 | 14.38 | 22 |
| 2-18022-5 | B | M8 | 50 | 13 | 5.3 | 14.38 | 22 |

| | | | | | | | | | | | |
|--|--------------------|-----|-------------------------------------|--|------------------|--|----|-----|-----|------|--|
| COMMERCIAL ITEM SPECIFICATION | | | MATERIAL | | | | | | | | |
| | | | See Note 1.2. | | | | | | | | |
| © 2010 Tyco Electronics Corporation, Berwyn, PA All Rights Reserved | | | FINISH | | | | | | | | |
| | | | Black Oxide | | | | | | | | |
| G Add -55 JNB 11NOV10 | | | | | DIMENSIONS IN mm | | NO | REV | LOC | DIST | |
| | | | | | 18022 | | G | B | 31 | | |
| SHEET 1 OF 2 | | | TITLE | | | | | | | | |
| | | | SCREW, CAP, HEX HEAD, METRIC SERIES | | | | | | | | |
| REV | ENGINEERING CHANGE | CHK | DATE | | | | | | | | |

1. PART NUMBER AND CHARACTERISTICS (Continued)

| TE Part No | Rev | Thread | A | B | C | D | E |
|------------|-----|--------|-----|-----|-----|-------|----|
| 2-18022-6 | B | M8 | 60 | 13 | 5.3 | 14.38 | 22 |
| 2-18022-7 | B | M8 | 70 | 13 | 5.3 | 14.38 | 22 |
| 2-18022-8 | B | M8 | 80 | 13 | 5.3 | 14.38 | 22 |
| 2-18022-9 | B | M8 | 90 | 13 | 5.3 | 14.38 | 22 |
| 3-18022-0 | B | M10 | 16 | 16 | 6.4 | 17.77 | 16 |
| 3-18022-1 | B | M10 | 20 | 16 | 6.4 | 17.77 | 20 |
| 3-18022-2 | B | M10 | 25 | 16 | 6.4 | 17.77 | 25 |
| 3-18022-3 | B | M10 | 30 | 16 | 6.4 | 17.77 | 26 |
| 3-18022-4 | B | M10 | 40 | 16 | 6.4 | 17.77 | 26 |
| 3-18022-5 | B | M10 | 50 | 16 | 6.4 | 17.77 | 26 |
| 3-18022-6 | B | M10 | 60 | 16 | 6.4 | 17.77 | 26 |
| 3-18022-7 | B | M10 | 70 | 16 | 6.4 | 17.77 | 26 |
| 3-18022-8 | B | M10 | 80 | 16 | 6.4 | 17.77 | 26 |
| 3-18022-9 | B | M10 | 90 | 16 | 6.4 | 17.77 | 26 |
| 4-18022-0 | B | M10 | 100 | 16 | 6.4 | 17.77 | 26 |
| 4-18022-1 | B | M12 | 20 | 18 | 7.5 | 20.03 | 20 |
| 4-18022-2 | B | M12 | 25 | 18 | 7.5 | 20.03 | 25 |
| 4-18022-3 | B | M12 | 30 | 18 | 7.5 | 20.03 | 30 |
| 4-18022-4 | B | M12 | 40 | 18 | 7.5 | 20.03 | 30 |
| 4-18022-5 | B | M12 | 50 | 18 | 7.5 | 20.03 | 30 |
| 4-18022-6 | B | M12 | 60 | 18 | 7.5 | 20.03 | 30 |
| 4-18022-7 | B | M12 | 70 | 18 | 7.5 | 20.03 | 30 |
| 4-18022-8 | B | M12 | 80 | 18 | 7.5 | 20.03 | 30 |
| 4-18022-9 | B | M12 | 90 | 18 | 7.5 | 20.03 | 30 |
| 5-18022-0 | B | M12 | 100 | 18 | 7.5 | 20.03 | 30 |
| 5-18022-1 | B | M3 | 16 | 5.5 | 2 | 6.01 | 12 |
| 5-18022-2 | C | M4 | 8 | 7 | 2.8 | 7.66 | 8 |
| 5-18022-3 | D | M4 | 12 | 7 | 2.8 | 7.66 | 12 |
| 5-18022-4 | F | M3 | 6 | 5.5 | 2 | 6.01 | 6 |
| 5-18022-5 | G | M4 | 6 | 7 | 2.8 | 7.66 | 6 |

- 1.1. Shall comply with DIN 931/933 and ISO 4014/4017
- 1.2. Material shall be carbon steel that meets or exceeds ISO Standard 898/1, Class 8.8
- 2. MANUFACTURER
None



Tyco Electronics
Corporation
Berwyn, PA

SHEET
2 OF 2

NO

18022

REV
G

LOC
B

DIST
31