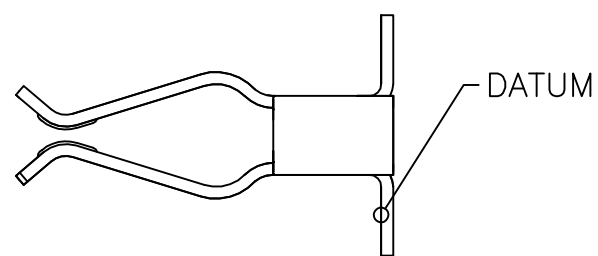
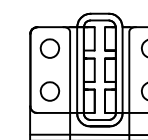
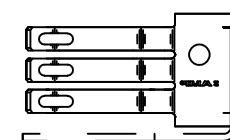
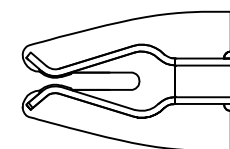
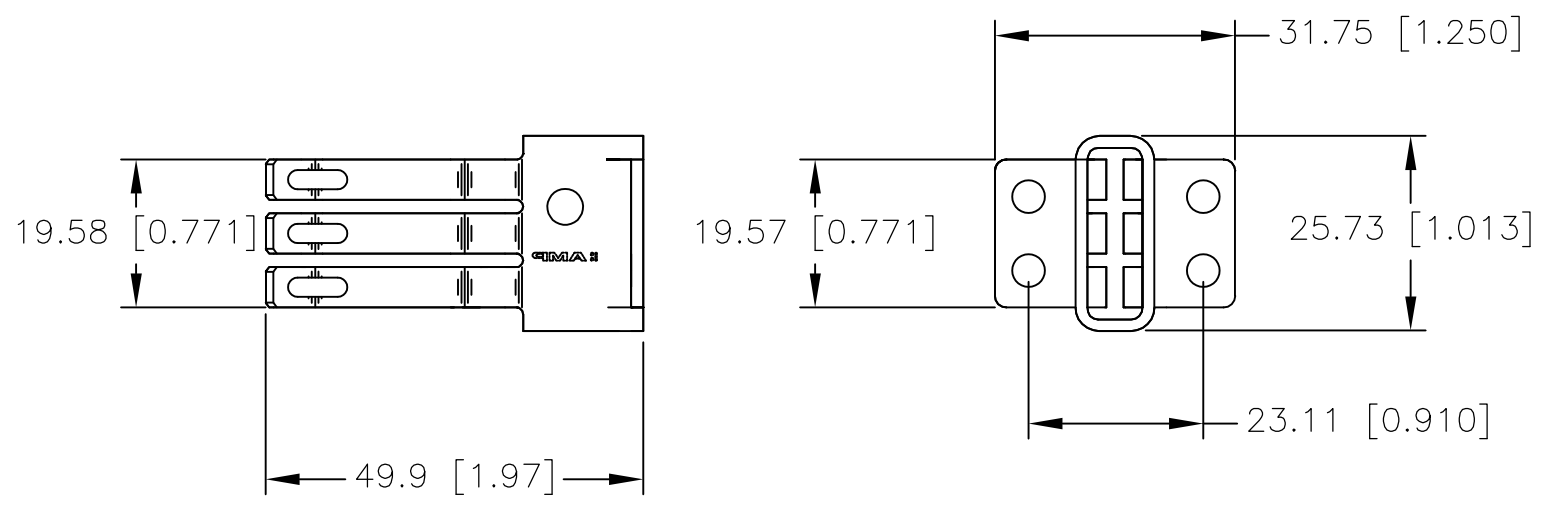


THIS DRAWING IS UNPUBLISHED. RELEASED FOR PUBLICATION
 © COPYRIGHT - By - ALL RIGHTS RESERVED.

LOC		DIST		REVISIONS			
P	LTR	DESCRIPTION		DATE	DWN	APVD	
	A	REV PER ECO-11-023636		12DEC2011	RG	DO	

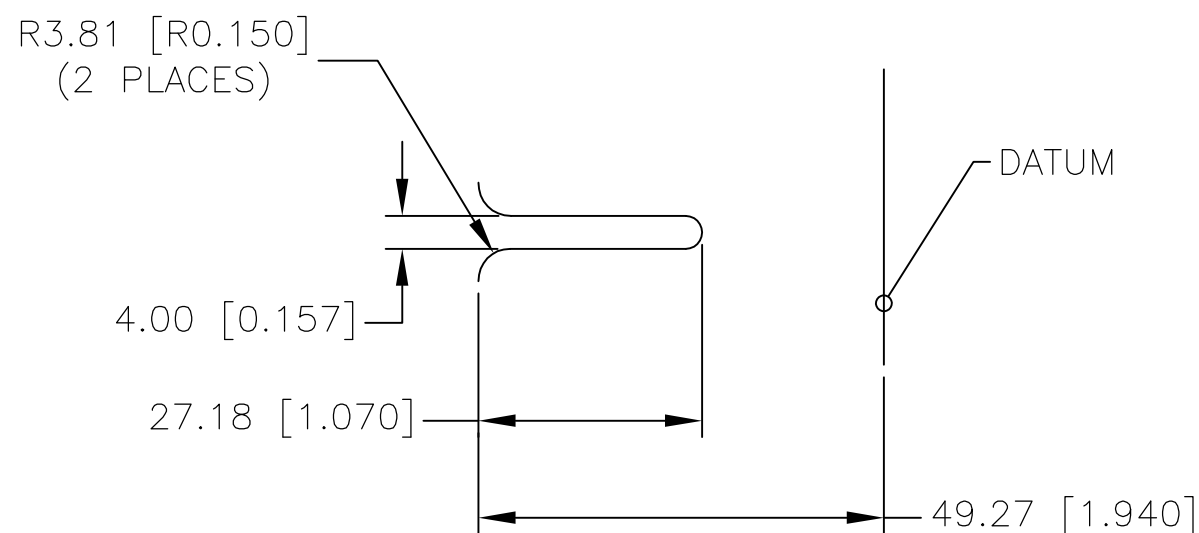


1. ALL DIMENSIONS ARE FOR REFERENCE ONLY.
2. PART MAY HAVE HOLE IN THIS LOCATION, BOTH SIDE.



BUSPLUG WITH RECOMMENDED ANTI-OVERSTRESS PLATE

THE ASSEMBLY PART NUMBER INCLUDING THE ANTI-OVERSTRESS PLATE IS 213647-1



RECOMMENDED LEAD-IN GEOMETRY FOR CUSTOMER SUPPLIED ANTI-OVERSTRESS PLATE

213648-3
PART NUMBER

THIS DRAWING IS A CONTROLLED DOCUMENT.		DWN D.RENNOX	17/APR/98	STE TE Connectivity	
DIMENSIONS: mm [INCHES]		CHK -	APVD -		
TOLERANCES UNLESS OTHERWISE SPECIFIED:		PRODUCT SPEC 108-1101		RESTRICTED TO -	
0 PLC ± -		APPLICATION SPEC 114-2111		SIZE A3	CAGE CODE 00779
1 PLC ± -		WEIGHT -		DRAWING NO C-213648	SCALE NTS
2 PLC ± -		CUSTOMER DRAWING		SHEET 1 OF 1	REV A
3 PLC ± -					
4 PLC ± -					
ANGLES ± -					
FINISH -					