

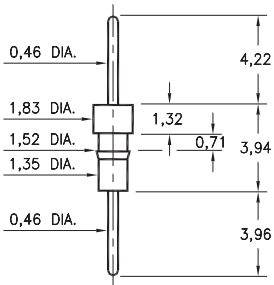
MALE PCB PINS

PRINTED CIRCUIT PINS

0504/0505

050X-0-00-XX-00-00-03-0

Press-fit in 1,45 mounting hole

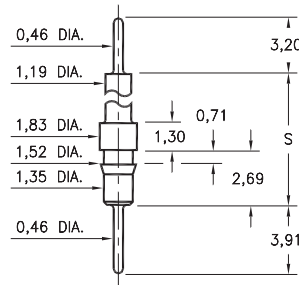


Basic Part Number	Pin Material
0504-0	Phosphor Bronze 544
0505-0	Brass 360

5510/5511

551X-0-00-XX-00-00-03-0

Press-fit in 1,45 mounting hole

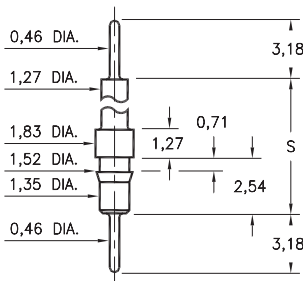


Basic Part Number	Standoff Height S
5510-0	8,41
5511-0	15,39

4259

4259-X-00-XX-00-00-03-0

Press-fit in 1,45 mounting hole

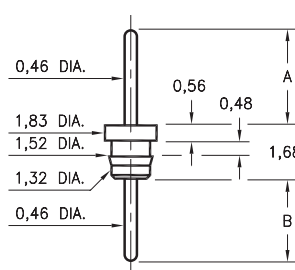


Basic Part Number	Standoff Height S
4259-1	5,33
4259-2	8,51
4259-3	14,86
4259-4	21,21

X516

X516-0-00-XX-00-00-03-0

Press-fit in 1,45 mounting hole

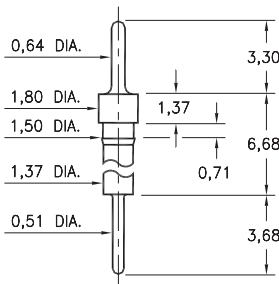


Basic Part Number	Pin Length A	Pin Length B
3516-0	3,18	2,74
4516-0	3,43	3,0

8859

8859-0-00-XX-00-00-03-0

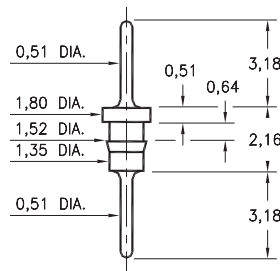
Press-fit in 1,42 mounting hole



6585

6585-0-00-XX-00-00-03-0

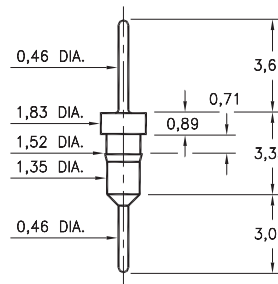
Press-fit in 1,45 mounting hole
Pin material is Phosphor Bronze 544 (B2)



3404

3404-0-00-XX-00-00-03-0

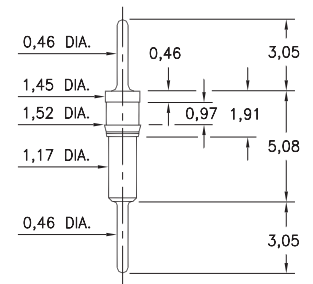
Press-fit in 1,45 mounting hole



9218

9218-0-00-XX-00-00-03-0

Press-fit in 1,45 mounting hole



SPECIFICATIONS:

Pin Material: Brass Alloy 360, 1/2 Hard
(Except where noted)

Dimensions: Millimeters

Tolerances On: Lengths: $\pm 0,13$
Diameters: $\pm 0,051$
Angles: $\pm 2^\circ$



ORDER CODE: **XXXX - X - 00 - XX - 00 - 00 - 03 - 0**

BASIC PART #

SPECIFY PIN FINISH:

- 01 5,08 μ m TIN/LEAD OVER NICKEL
- ◆ 80 5,08 μ m TIN OVER NICKEL (RoHS)
- ◆ 15 0,25 μ m GOLD OVER NICKEL (RoHS)
- ◆ 21 0,51 μ m GOLD OVER NICKEL (RoHS)
- ◆ 34 1,27 μ m GOLD OVER NICKEL (RoHS)

