

USED ON

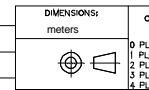
THIS DRAWING IS A CONTROLLED DOCUMENT. BFC#D

Part #	L (meters)	L (feet)	LC-Duplex Secure, Slate		LC-Duplex, Beige	
			IL (dB)	RL (dB)	IL (dB)	RL (dB)
4-1906021-3	42.570 - 43.430	139.66 - 142.48	0.56	-	0.56	-
4-1906021-4	43.560 - 44.440	142.91 - 145.80	0.57	-	0.57	-
4-1906021-5	44.550 - 45.450	146.16 - 149.11	0.57	-	0.57	-
4-1906021-6	45.540 - 46.460	149.40 - 152.42	0.57	-	0.57	-
4-1906021-7	46.530 - 47.470	152.65 - 155.74	0.57	-	0.57	-
4-1906021-8	47.520 - 48.480	155.90 - 159.05	0.57	-	0.57	-
4-1906021-9	48.510 - 49.490	159.15 - 162.36	0.57	-	0.57	-
5-1906021-0	49.500 - 50.500	162.40 - 165.68	0.58	-	0.58	-
5-1906021-1	50.490 - 51.510	165.64 - 168.99	0.58	-	0.58	-
5-1906021-2	51.480 - 52.520	168.89 - 172.30	0.58	-	0.58	-
5-1906021-3	52.470 - 53.530	172.14 - 175.62	0.58	-	0.58	-
5-1906021-4	53.460 - 54.540	175.39 - 178.93	0.58	-	0.58	-
5-1906021-5	54.450 - 55.550	178.64 - 182.25	0.58	-	0.58	-
5-1906021-6	55.440 - 56.560	181.88 - 185.56	0.58	-	0.58	-
5-1906021-7	56.430 - 57.570	185.13 - 188.87	0.59	-	0.59	-
5-1906021-8	57.420 - 58.580	188.38 - 192.19	0.59	-	0.59	-
5-1906021-9	58.410 - 59.590	191.63 - 195.50	0.59	-	0.59	-
6-1906021-0	59.400 - 60.600	194.88 - 198.81	0.59	-	0.59	-
6-1906021-1	60.390 - 61.610	198.12 - 202.13	0.59	-	0.59	-
6-1906021-2	61.380 - 62.620	201.37 - 205.44	0.59	-	0.59	-
6-1906021-3	62.370 - 63.630	204.62 - 208.75	0.59	-	0.59	-
6-1906021-4	63.360 - 64.640	207.87 - 212.07	0.6	-	0.6	-
6-1906021-5	64.350 - 65.650	211.12 - 215.38	0.6	-	0.6	-
6-1906021-6	65.340 - 66.660	214.37 - 218.70	0.6	-	0.6	-
6-1906021-7	66.330 - 67.670	217.61 - 222.01	0.6	-	0.6	-
6-1906021-8	67.320 - 68.680	220.86 - 225.32	0.6	-	0.6	-
6-1906021-9	68.310 - 69.690	224.11 - 228.64	0.6	-	0.6	-
7-1906021-0	69.300 - 70.700	227.36 - 231.95	0.61	-	0.61	-
7-1906021-1	70.290 - 71.710	230.61 - 235.26	0.61	-	0.61	-
7-1906021-2	71.280 - 72.720	233.85 - 238.58	0.61	-	0.61	-
7-1906021-3	72.270 - 73.730	237.10 - 241.89	0.61	-	0.61	-
7-1906021-4	73.260 - 74.740	240.35 - 245.20	0.61	-	0.61	-
7-1906021-5	74.250 - 75.750	243.60 - 248.52	0.61	-	0.61	-
7-1906021-6	75.240 - 76.760	246.85 - 251.83	0.61	-	0.61	-
7-1906021-7	76.230 - 77.770	250.09 - 255.15	0.62	-	0.62	-
7-1906021-8	77.220 - 78.780	253.34 - 258.46	0.62	-	0.62	-
7-1906021-9	78.210 - 79.790	256.59 - 261.77	0.62	-	0.62	-
8-1906021-0	79.200 - 80.800	259.84 - 265.09	0.62	-	0.62	-

THIS INFORMATION IS CONFIDENTIAL AND PROPRIETARY TO TYCO ELECTRONICS CORPORATION. IT IS TO BE KEPT CONFIDENTIAL AND NOT DISCLOSED TO ANY OTHERS WITHOUT THE WRITTEN AUTHORIZATION OF TYCO ELECTRONICS CORPORATION, HARRISBURG, PENNSYLVANIA

LOC
CE
DIST
16

A	Rev Per	EC#	RELEASE	6/5/2007	-	JD			
P	LTR		REVISION RECORD	DATE	DIN	APVD			



DIMENSIONS:
meters

TOLERANCES UNLESS OTHERWISE SPECIFIED:
 9 PLC ± .
 1 PLC ± .
 2 PLC ± .
 3 PLC ± .
 4 PLC ± .

Restricted To:

DIN	Cable Assy Configurator	MATERIAL	-	HEAT TREAT	-
CHK	Jeremy Duncan	Tyco Electronics, Inc. Harrisburg, PA 17105-3608			
APVD	Jeremy Duncan				
NAME	FO C/A - 2 fiber, 50/125, OFNR (Riser) jacket, LC-Duplex Secure to LC-Duplex				
SCALE	NTS	SIZE	A2	DRAWING NO	C- 1906021
SHEET	3 of 4	REV	A		

8 7 6 5 4 3 2 1

CAC Customer Layout Rev: D

D
C
B
A

Label 1

Per specification 107-1645-1



Trace # - Bar Code
Trace # - Human Readable
Part Number
Country of Origin

This label is used on all lengths on this drawing.

Label 2

Per specification 107-1645-1



Trace # - Bar Code
Trace # - Human Readable
Part Number
Country of Origin

This label is used on all lengths on this drawing.

THIS DRAWING IS A CONTROLLED DOCUMENT.

THIS INFORMATION IS CONFIDENTIAL AND PROPRIETARY TO TYCO ELECTRONICS CORPORATION. IT IS NOT TO BE DISCLOSED TO ANYONE OTHER THAN TYCO ELECTRONICS PERSONNEL, WITHOUT WRITTEN AUTHORIZATION FROM TYCO ELECTRONICS CORPORATION, HARRISBURG, PENNSYLVANIA

LOC
CE
DIST
16

A	Rev Per	EC#	RELEASE	6/5/2007	-	JD	
P	LTR		REVISION RECORD	DATE	DIN	APVD	

DIMENSIONS: meters	TOLERANCES UNLESS OTHERWISE SPECIFIED:
0 PLC	± .
1 PLC	± .
2 PLC	± .
3 PLC	± .
4 PLC	± .

Restricted To:

DIN	Cable Assy Configurator	MATERIAL	HEAT TREAT
CHK	Jeremy Duncan		
APVD	Jeremy Duncan	AMP Tyco Electronics, Inc. Harrisburg, PA 17105-3608	
NAME	FO C/A - 2 fiber, 50/125, OFNR (Riser) jacket, LC-Duplex Secure to LC-Duplex		
SCALE	SIZE	DRAWING NO	SHEET
NTS	A2	C- 1906021	4 of 4
			REV
			A