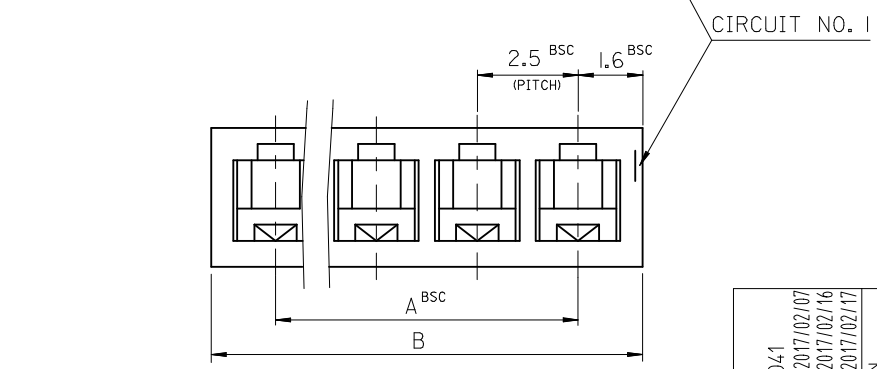
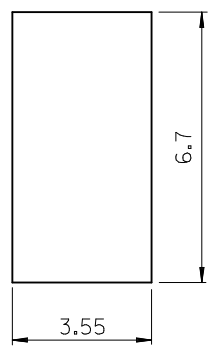
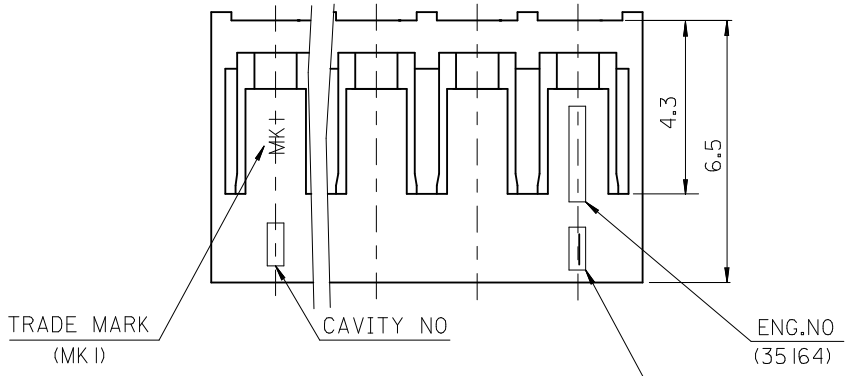
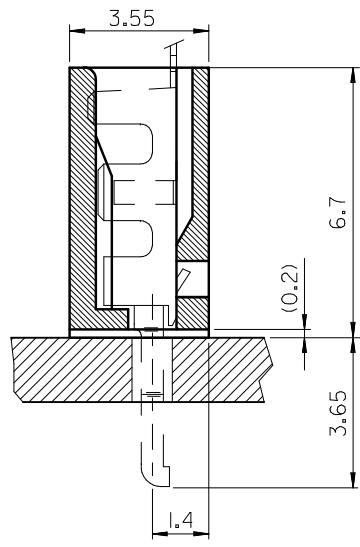
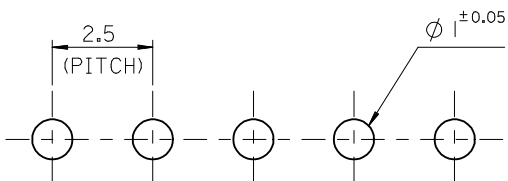
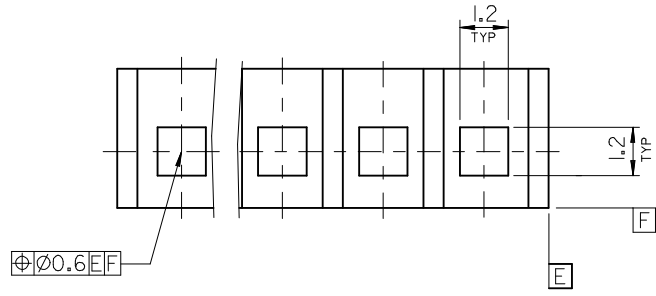


10 9 8 7 6 5 4 3 2 1



NOTES

- 1.MATERIAL : NYLON66 UL94V-0
2. MATED WITH TERMINAL : 35047-9802

LEGEND

35164- ** 0 *
 COLOR : 0 --- NATURAL
 2 --- RED
 CKT (02 , 03 , 04)

38.2	35	35164	-150*	15
35.7	32.5		-140*	14
33.2	30		-130*	13
30.7	27.5		-120*	12
28.2	25		-110*	11
25.7	22.5		-100*	10
23.2	20		-090*	9
20.7	17.5		-080*	8
18.2	15		-070*	7
15.7	12.5		-060*	6
13.2	10		-050*	5
10.7	7.5		-040*	4
8.2	5.0		-030*	3
5.7	2.5	35164	-020*	2
	B	A	ENG.NO	CKT

REVISED EC NO: KOR2017-0041 DRWN: JSSHIN 2017/02/07 CHKD: SHCHU 2017/02/16 APPR: YSKI MO2 2017/02/17	QUALITY SYMBOLS ▽=0 ◻=0	GENERAL TOLERANCES (UNLESS SPECIFIED)		DIMENSION STYLE MM ONLY		SCALE 8/1	DESIGN UNITS METRIC	THIRD ANGLE PROJECTION			
		4 PLACES ± --- ± ---	mm INCH	DRAWN BY KSKIM	DATE 2001/10/25	TITLE 2.5 PITCH BOARD-IN CONN. HOUSING					
		3 PLACES ± --- ± ---		CHECKED BY JUNGKIL OH	DATE 2001/10/25	MOLEX INCORPORATED					
		2 PLACES ± --- ± ---		APPROVED BY CHANGWOOLE	DATE 2001/10/25	DOCUMENT NO. SD-35164-**-0*					
		ANGULAR ± 2 °		MATERIAL NO. SEE TABLE		SHEET NO. 1 OF 1					
DRAFT WHERE APPLICABLE MUST REMAIN WITHIN DIMENSIONS		THIS DRAWING CONTAINS INFORMATION THAT IS PROPRIETARY TO MOLEX INCORPORATED AND SHOULD NOT BE USED WITHOUT WRITTEN PERMISSION									

9 8 7 6 5 4 3 2 1