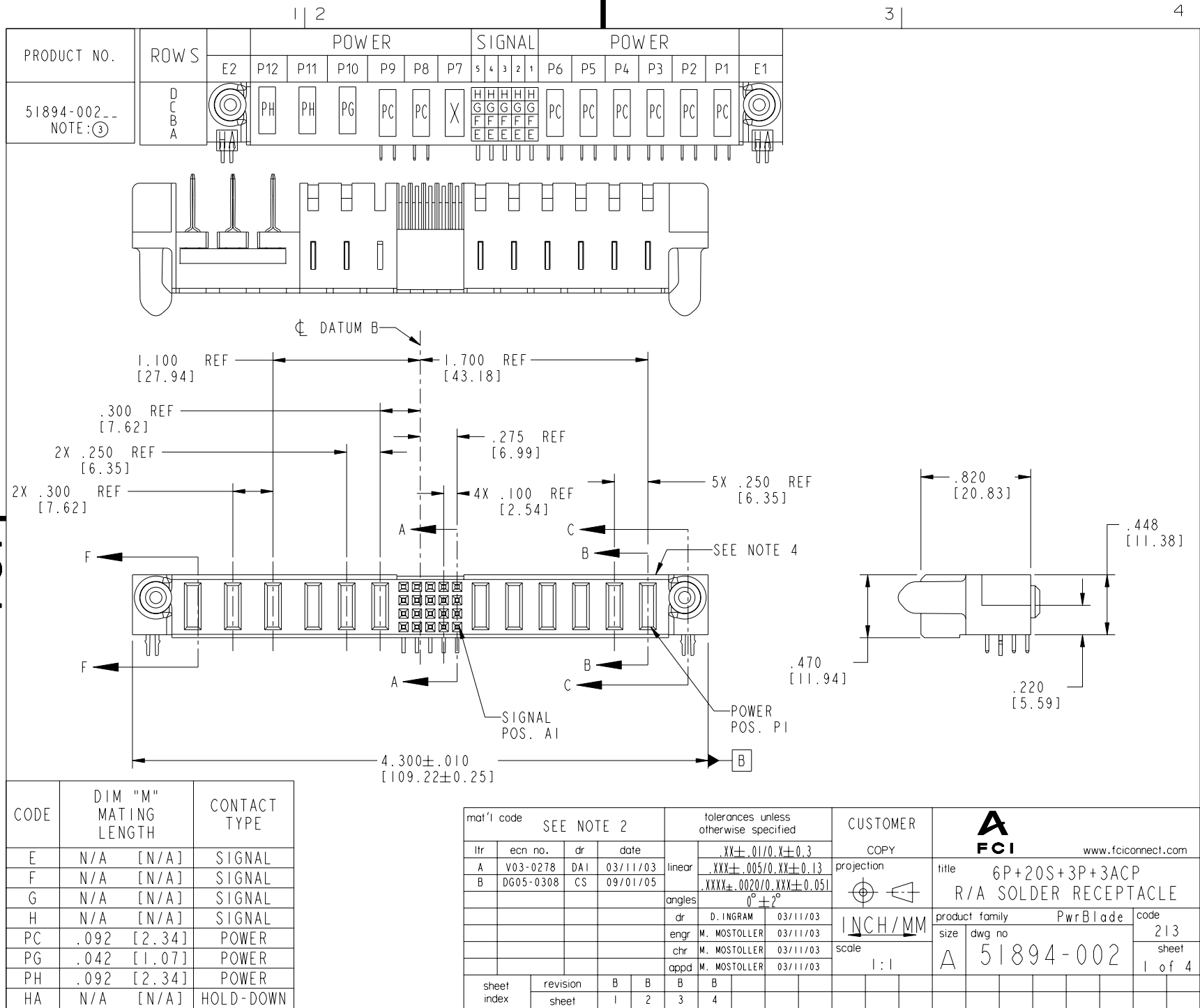


Tous droits strictement réservés. Reproduction ou communication a des tiers interdite sous quelque forme que ce soit sans autorisation écrite du propriétaire. Propriété de c FCI. Droits de reproduction FCI.



All rights strictly reserved. Reproduction or issue to third parties in any form whenever is not permitted without written authority from the proprietor. Property of FCI. Copyright FCI.



CODE	DIM "M" MATING LENGTH	CONTACT TYPE
E	N/A [N/A]	SIGNAL
F	N/A [N/A]	SIGNAL
G	N/A [N/A]	SIGNAL
H	N/A [N/A]	SIGNAL
PC	.092 [2.34]	POWER
PG	.042 [1.07]	POWER
PH	.092 [2.34]	POWER
HA	N/A [N/A]	HOLD-DOWN

mat'l code SEE NOTE 2				tolerances unless otherwise specified		CUSTOMER		 www.fciconnect.com	
ltr	ecn no.	dr	date	linear	.XX±.01/0.X±0.3		COPY		 title 6P+20S+3P+3ACP R/A SOLDER RECEPTACLE
A	V03-0278	DAI	03/11/03		.XXX±.005/0.XX±0.13		projection		
B	DG05-0308	CS	09/01/05	angles	.XXX±.0020/0.XXX±0.051		 product family PwrBlade code 213		
				dr	D. INGRAM	03/11/03	scale 1:1		sheet 1 of 4
				enr	M. MOSTOLLER	03/11/03			
				chr	M. MOSTOLLER	03/11/03			
				appd	M. MOSTOLLER	03/11/03			
sheet index	revision sheet	B 1	B 2	B 3	B 4			cage code 22526	4

Pro/E

PDM: Rev:B

STATUS: Released

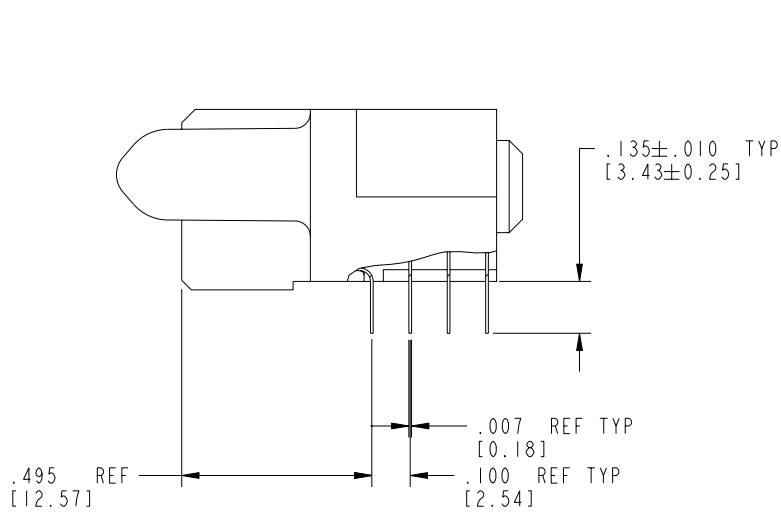
Printed: Dec 20, 2010

Tous droits strictement réservés. Reproduction ou communication a des tiers interdite sous quelque forme que ce soit sans autorisation écrite du propriétaire. Propriété de c FCI. Droits de reproduction FCI.

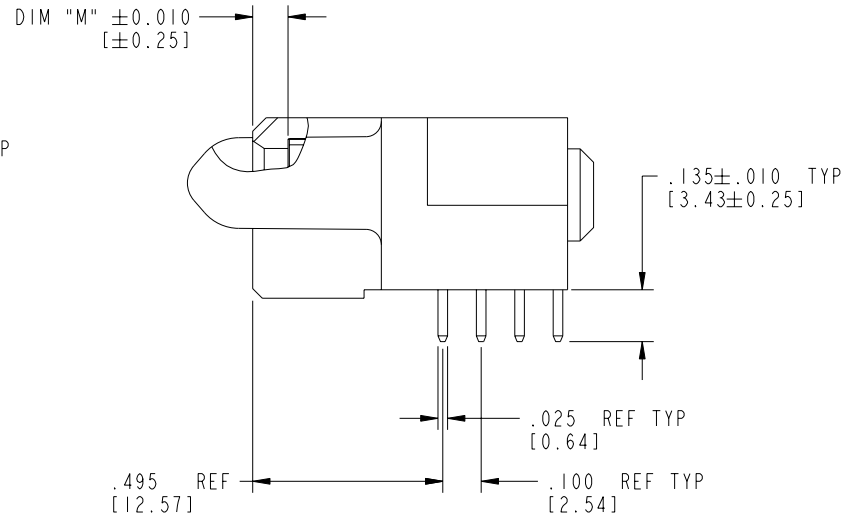
FCI

All rights strictly reserved. Reproduction or issue to third parties in any form whatever is not permitted without written authority from the proprietor. Property of FCI. Copyright FCI.

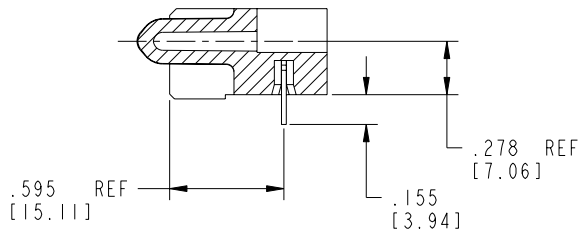
PRODUCT NUMBER
51894-002--
NOTE: ③



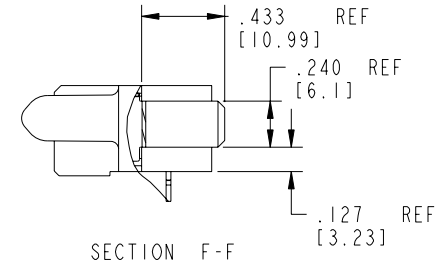
BROKEN-OUT SECTION A-A
SCALE 2:1



BROKEN-OUT SECTION B-B
SCALE 2:1



SECTION C-C



SECTION F-F

mat'l code SEE NOTE 2				tolerances unless otherwise specified		CUSTOMER	FCI www.fciconnect.com		
ltr	ecn no.	dr	date	linear	.XX±.01/0.X±0.3	COPY	title	6P+20S+3P+3ACP	
B				projection	.XXX±.005/0.XXX±0.13		R/A SOLDER RECEPTACLE		
				angles	.XXX±.0020/0.XXX±0.051		product family	PwrBlade	code
				dr	D. INGRAM 03/11/03		size	dwg no	
				engr	M. MOSTOLLER 03/11/03		A	51894-002	213
				chr	M. MOSTOLLER 03/11/03		scale	1:1	sheet
				appd	M. MOSTOLLER 03/11/03				2 of 4
sheet index	revision sheet						cage code	22526	

Pro/E

3

cage code 22526

4

PDM: Rev:B

STATUS: Released

Printed: Dec 20, 2010

Tous droits strictement réservés. Reproduction ou communication o des tiers interdite sous quelque forme que ce soit sans autorisation écrite du propriétaire. Propriete de c FCI. Droits de reproduction FCI.

All rights strictly reserved. Reproduction or issue to third parties in any form whatever is not permitted without written authority from the proprietor. Property of FCI. Copyright FCI.

PRODUCT NUMBER
51894-002--
NOTE:③

DIM XXX
SEE NOTE 10

.150 TYP
[3.81]

3X .100 TYP
[2.54]

Y

Z

$\varnothing .098 \pm .003$
[2.49 ± 0.07]
SEE NOTE 8

$\varnothing .004$ [0.1] X Y Z

.550
[13.97]

.250
[6.35]

.050 TYP
[1.27]

.100 TYP
[2.54]

$\varnothing .040 \pm .003$
[1.02 ± 0.07]
SEE NOTE 9

$\varnothing .004$ [0.1] X Y Z

4.000
[101.6]

4.330 SEE NOTE 11
[109.98]

2.165 SEE NOTE 11
[54.99]

1.700
[43.18]

.275
[6.99]

5X .250
[6.35]

4X .100
[2.54]

SEE NOTE 11
3 SIDES

.610
[15.49]
SEE NOTE 11

2X .250
[6.35]

.050 TYP
[1.27]

.100 TYP
[2.54]

PCB EDGE

PCB LAYOUT
AND DATUM B ϕ

X

mat'l code				SEE NOTE 2	tolerances unless otherwise specified	CUSTOMER	FCI www.fciconnect.com		
ltr	ecr no.	dr	date	linear	.XX ± .01/0.X ± 0.3	COPY	title 6P+20S+3P+3ACP		
B				projection	.XXX ± .005/0.XXX ± 0.13		R/A SOLDER RECEPTACLE		
				angles	.XXX ± .002/0.XXX ± 0.051	$0^\circ \pm 2^\circ$	product family	PwrBlade	
				dr	D. INGRAM 03/11/03		size	code 213	
				engr	M. MOSTOLLER 03/11/03		dwg no	sheet 3 of 4	
				chr	M. MOSTOLLER 03/11/03		A	51894-002	
				appd	M. MOSTOLLER 03/11/03			3 of 4	
sheet index	revision sheet					scale	1:1		

cage code 22526

Pro/E

PDM: Rev:B

STATUS: Released

Printed: Dec 20, 2010

Tous droits strictement réservés. Reproduction ou communication a des tiers interdite sous quelque forme que ce soit sans autorisation écrite du propriétaire. Propriété de c FCI. Droits de reproduction FCI.

FCI

All rights strictly reserved. Reproduction or issue to third parties in any form whatever is not permitted without written authority from the proprietor. Property of FCI. Copyright FCI.

1 | 2

3 |

4

PRODUCT NUMBER

51894-002--
NOTE: ③

NOTES:

1. DIMENSIONS AND TOLERANCES ARE IN ACCORDANCE WITH ASME Y14.5M, 1994 UNLESS OTHERWISE SPECIFIED.

CONNECTOR NOTES:

②. HOUSING MATERIAL: UL 94 V-0 GLASS FILLED
HIGH-TEMP THERMOPLASTIC
POWER CONTACT MATERIAL: COPPER ALLOY
SIGNAL PIN MATERIAL: COPPER ALLOY

3. PLATING:

51894-002 Singal Pin: 30u"/0.76um Au OVER 50u"/1.27um Ni ON THE CONTACT AREA,
AND 100u"/2.54um SnPb PLATING OVER 50u"/1.27um Ni ON THE TERMINATION SECTION.
Power Pin: 30u"/0.76um Au OVER 50u"/1.27um Ni ON THE CONTACT AREA,
AND 100u"/2.54um SnPb PLATING OVER 50u"/1.27um Ni ON THE TERMINATION SECTION.

51894-002LF Singal Pin: 30u"/0.76um Au OVER 50u"/1.27um Ni ON THE CONTACT AREA,
AND 78u"/2.00um Sn PLATING OVER 50u"/1.27um Ni ON THE TERMINATION SECTION.
Power Pin: 30u"/0.76um Au OVER 50u"/1.27um Ni ON THE CONTACT AREA,
AND 78u"/2.00um Sn PLATING OVER 50u"/1.27um Ni ON THE TERMINATION SECTION.

PART NUMBER 51894-002LF MEETS EUROPEAN UNION DIRECTIVE AND OTHER COUNTRY REGULATIONS AS DESCRIBED IN GS-22-008.

THE HOUSING WILL WITHSTAND EXPOSURE TO 260° PEAK TEMPERATURE FOR 10 SECONDS IN A WAVE SOLDER APPLICATION WITH A CIRCUIT BOARD.

④. MANUFACTURER'S NAME, P/N, AND DATE CODE TO APPEAR ON THIS SURFACE.

5. PRODUCT SPECIFICATION GS-12-149.
APPLICATION SPECIFICATION BUS-20-067.

6. PACKAGED IN TRAYS.

PCB NOTES:


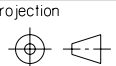
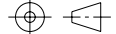


7. ALL HOLE DIAMETERS ARE FINISHED HOLE SIZE.

⑧. MOUNTING HOLES, WHERE APPLICABLE, ARE UNPLATED.

⑨. $\varnothing .0453 \pm .0010$ [1.151 ± 0.025] DRILLED HOLES PLATED WITH .0003 [0.008] MIN SnPb OVER .001 [0.03] TO .003 [0.08] Cu PLATING TO ACHIEVE $\varnothing .040 \pm .003$ [1.02 ± .07] HOLE.

⑩. "DIM XXX" TO BE DETERMINED BY THE CUSTOMER.

⑪. CONNECTOR KEEP-OUT ZONE.

mat'l code				SEE NOTE 2		tolerances unless otherwise specified		CUSTOMER		 www.fciconnect.com	
ltr	ecr no.	dr	date	linear	.XX±.01/0.X±0.3		COPY		 title 6P+20S+3P+3ACP R/A SOLDER RECEPTACLE		
B					.XXX±.005/0.XX±0.13		 product family PwrBlade code 213				
					angles	.XXX±.0020/0.XXX±0.051		 size dwg no 51894-002 sheet 4 of 4			
				dr	D. INGRAM	03/11/03	scale 1:1		 A		
				enr	M. MOSTOLLER	03/11/03					
				chr	M. MOSTOLLER	03/11/03					
				appd	M. MOSTOLLER	03/11/03					
sheet index	revision sheet										

1 | 2

Pro/E

3 |

cage code 22526

4