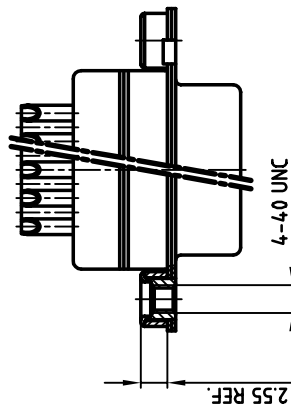
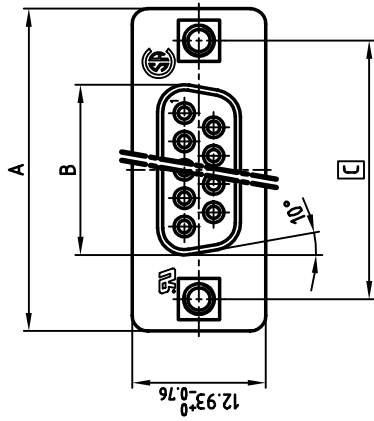
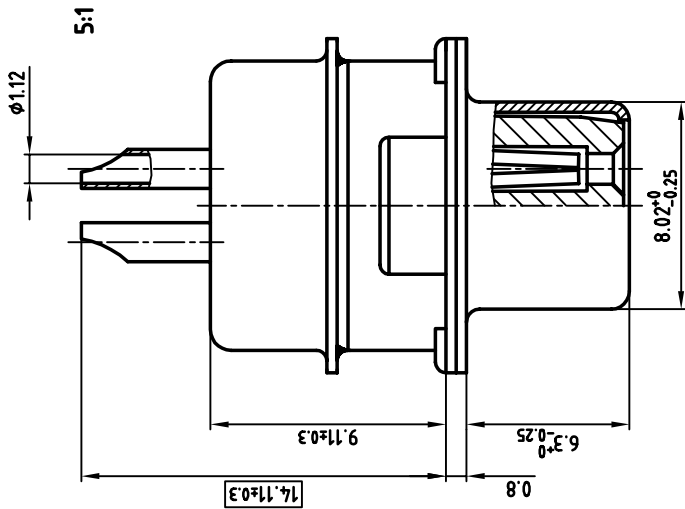


used for: D-SUB IT FILTER



**NOTES:**

1. METALSHELLS: STEEL; min. 320μ" TIN
2. INSULATORS: PBT GF UL 94 V-0, BLACK
3. CONTACTS: COPPER ALLOY
4. PLATING: min. 8μ" HARD GOLD OVER min. 50μ" NICKEL  
SOLDER CUP ACCEPTS CABLE AWG 20
5. THREADED INSERT: COPPER ALLOY; min. 200μ" TIN over 80μ" NICKEL
6. COLLAR: COPPER ALLOY; min. 200μ" TIN over 80μ" NICKEL
7. CAPACITANCE: 2 x 1300pF ±20%
8. DIELECTRIC WITHSTANDING VOLTAGE: 424VDC
9. MAXIMUM TORQUE VALUE FOR THREAD: 6" LBS
10.   = CRITICAL DIMENSION: SPC

CONEC CORPORATION BRAMPTON, ONTARIO		tolerance	scale: material:	2:1 (5:1) SEE NOTES	
2001	date	name	title:	<b>D-SUB IT FILTER FEMALE</b> SOLDER CUP 9-37pos. with threaded insert dwg no: <span style="border: 1px solid black; padding: 0 5px;">AutoCAD 2000</span> DIN-A 3 ish: 1/1 <b>24K1A102A</b> part no: <b>SEE TABLE</b>	
drawn	29.03.	Parel			
appl.	29.03.	E. Mickenbecker			
norm		DIN 41552			
		d-sold			
rev.	description	date	name		

THIS DRAWING MAY NOT BE COPIED OR REPRODUCED IN ANY WAY, AND MAY NOT BE PASSED ON TO A THIRD PARTY WITHOUT WRITTEN PERMISSION  
 OWNERSHIP AND COPYRIGHT OF CONEC GMBH  
 DO NOT ALTER CAD DRAWING BY HAND

No. of pos.	A <sup>-0.76</sup>	B <sup>-0.25</sup>	C	Part No.
9	31.19	16.46	25.00 <sup>+0.12</sup> <sub>-0.13</sub>	<b>242A29260X</b>
15	39.52	24.79	33.30 <sup>+0.15</sup> <sub>-0.1</sub>	<b>242A29270X</b>
25	53.42	38.50	47.04 <sup>+0.13</sup>	<b>242A29280X</b>
37	69.70	54.96	63.50 <sup>+0.13</sup>	<b>242A29290X</b>