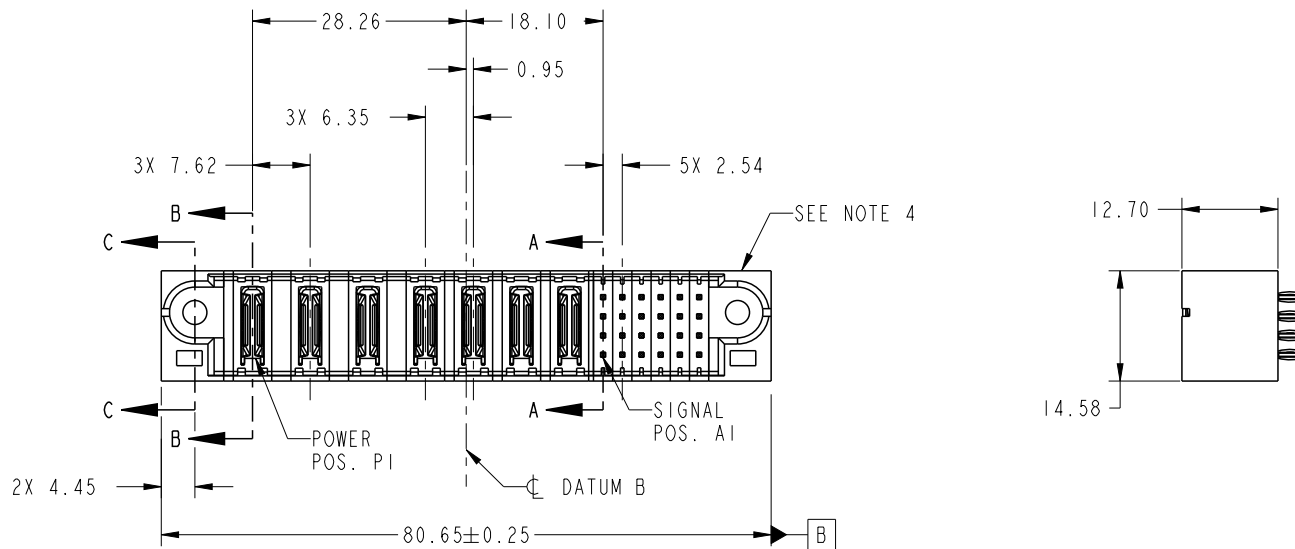


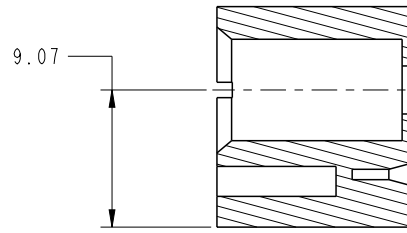
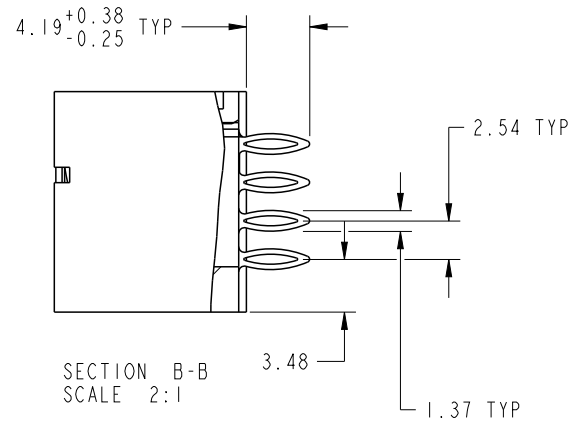
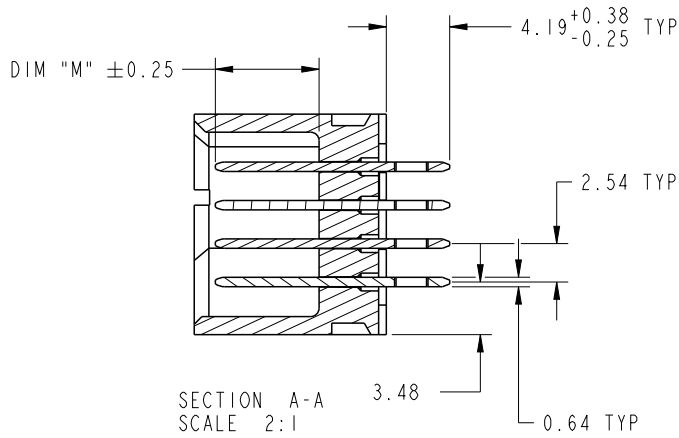
PRODUCT NO. 51952-194-- NOTE: 3	ROWS DCBA	POWER							SIGNAL						E2
		E1	P1	P2	P3	P4	P5	P6	P7	1	2	3	4	5	



CODE	DIM "M" MATING LENGTH	CONTACT TYPE
PC	[N/A]	POWER
G	[6.86]	SIGNAL

spec ref	See Notes		dr	Anson Liu	2011/07/27	projection	MM	size	A4	scale	1:1		
tolerance std	TOLERANCES UNLESS OTHERWISE SPECIFIED		eng	Julia Wang	2011/10/11			ecn no	ELX-DG-006820-1				
See Notes			chr	-	-				rel level	Released			
surface	✓	linear	0.X	±0.5		3ACP + 4P + 24S VERTICAL PRESS-FIT HEADER	dwg no	51952-194		rev	B		
			0.XX	±0.25				www.fci.com	cat. no.		-	Product - Customer Drw	sheet 1 of 4
		angular	0°	±2°									

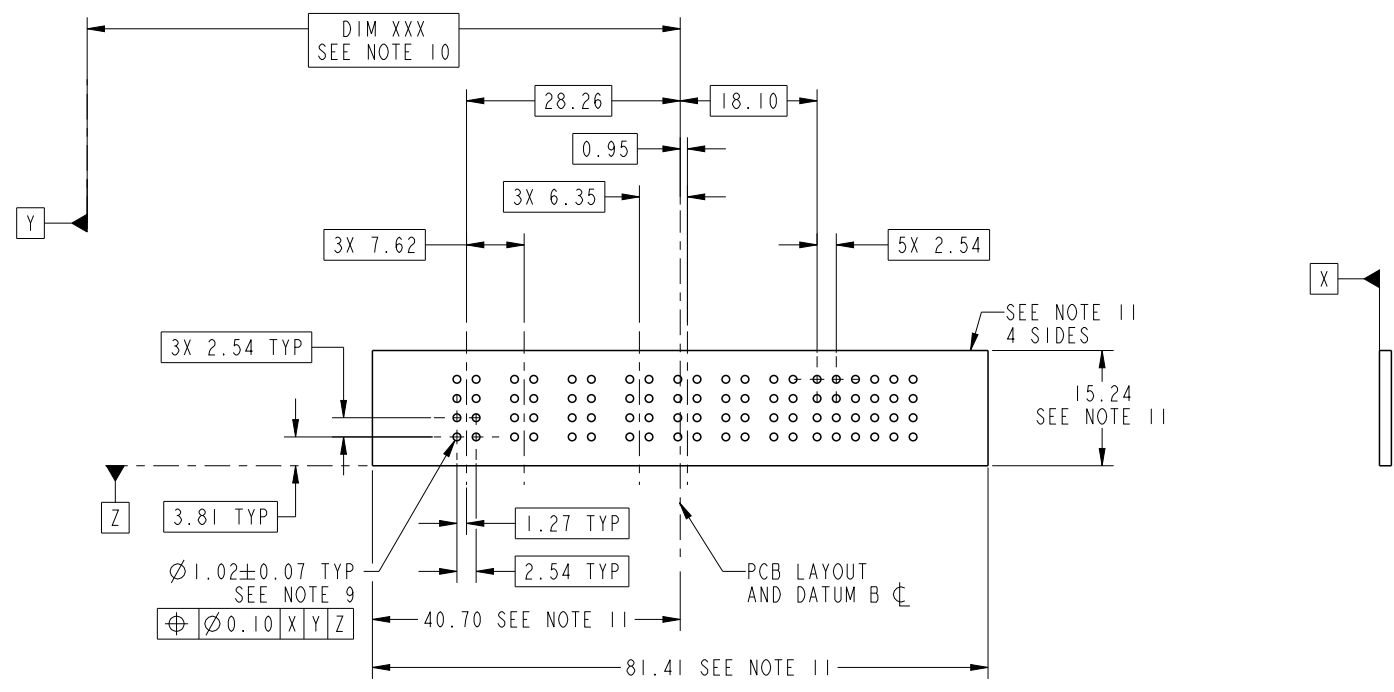
PrdE File - REV C - 2009-06-09



spec ref		See Notes		dr	Anson Liu	2011/07/27	projection 	MM ←→	size	A4	scale	1:1	
tolerance std		TOLERANCES UNLESS OTHERWISE SPECIFIED		eng	Julia Wang	2011/10/11			ecn no	ELX-DG-006820-1			
See Notes				chr	-	-			rel level	Released			
surface		linear	0.X	±0.5	FCI 	title	3ACP + 4P + 24S VERTICAL PRESS-FIT HEADER		dwg no	51952-194		rev	B
			0.XX	±0.25									
			0.XXX	±0.1									
		angular	0°	±2°	www.fci.com	cat. no.	-	Product - Customer Drw		sheet 2 of 4			



Copyright FCI.



RECOMMENDED PCB LAYOUT

spec ref		See Notes		dr	Anson Liu	2011/07/27	projection 	MM 	size	A4	scale	1:1	
tolerance std		TOLERANCES UNLESS OTHERWISE SPECIFIED		eng	Julia Wang	2011/10/11			ecn no	ELX-DG-006820-1			
See Notes				chr	-	-							
surface		linear	0.X	±0.5	FCI www.fci.com	title 3ACP + 4P + 24S VERTICAL PRESS-FIT HEADER	product family	PwrBlade		rel level	Released		
✓	angular		0.XX	±0.25				cat. no.	-		Product - Customer Drw	sheet 3 of 4	
		0.XXX	±0.1										
		0°	±2°	www.fci.com		cat. no.		-		Product - Customer Drw		sheet 3 of 4	

Prdr File - REV C - 2009-06-09

NOTES:

1. DIMENSIONS AND TOLERANCES ARE IN ACCORDANCE WITH ASME Y14.5M, 1994 UNLESS OTHERWISE SPECIFIED.

CONNECTOR NOTES:

- 2 HOUSING MATERIAL: UL 94 V-0 GLASS FILLED HIGH-TEMP THERMOPLASTIC
POWER CONTACT MATERIAL: COPPER ALLOY
SIGNAL PIN MATERIAL: COPPER ALLOY
- 3. SEE ITEM 3 & 4 IN PRINT 10064183 FOR PLATING SPEC OF 51952-194 AND 51952-194LF RESPECTIVELY.

4 MANUFACTURER'S NAME, DATE CODE AND OPTIONAL P/N TO APPEAR ON THIS SURFACE. THE P/N CAN BE OMITTED IF THERE IS NOT ENOUGH SPACE ON THIS SURFACE.

5. PRODUCT SPECIFICATION GS-12-149.
APPLICATION SPECIFICATION BUS-20-067.

6. PACKAGED IN TRAYS.

PCB NOTES:

- 7. ALL HOLE DIAMETERS ARE FINISHED HOLE SIZE.
- 8. MOUNTING HOLES, WHERE APPLICABLE, ARE UNPLATED.

9 $\varnothing 1.151 \pm 0.025$ DRILLED HOLES PLATED WITH
0.008 MIN SnPb OR Sn OVER .001 [0.03]
TO 0.08 Cu PLATING TO ACHIEVE
 $\varnothing 1.02 \pm 0.07$ HOLE.

10 "DIM XXX" TO BE DETERMINED BY THE CUSTOMER.

11 CONNECTOR KEEP-OUT ZONE.

12. FOR PRESS FIT APPLICATION USE FCI CAM TOOL 430169-XXX.

spec ref		See Notes		dr	Anson Liu	2011/07/27	projection 	MM 	size	A4	scale	1:1	
tolerance std		TOLERANCES UNLESS OTHERWISE SPECIFIED		eng	Julia Wang	2011/10/11			ecn no	ELX-DG-006820-1			
See Notes				chr	-	-			product family	PwrBlade		rel level	Released
surface	linear	0.X	± 0.5		title	3ACP + 4P + 24S		dwg no	51952-194		rev	B	
		0.XX	± 0.25			VERTICAL PRESS-FIT HEADER							
		0.XXX	± 0.1			cat. no.	-		Product - Customer Drw	sheet 4 of 4			
angular	0°	$\pm 2^\circ$	www.fci.com										