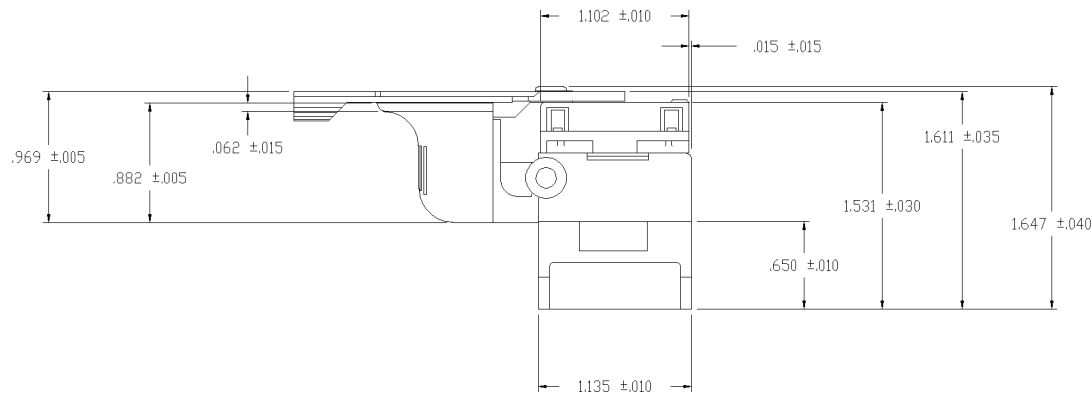
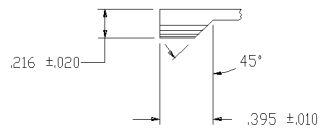
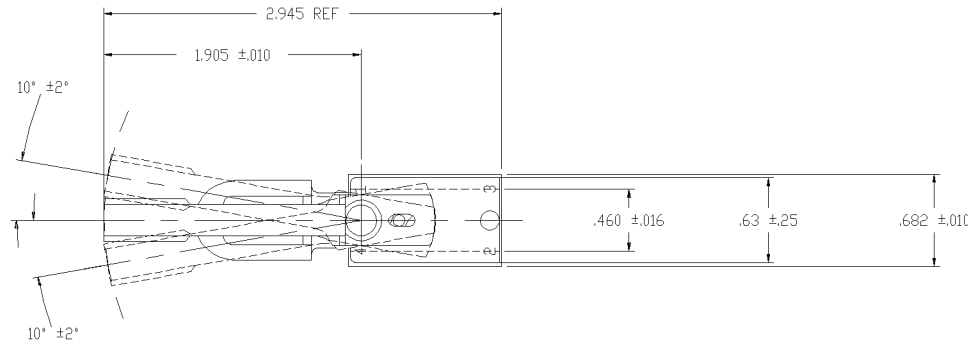
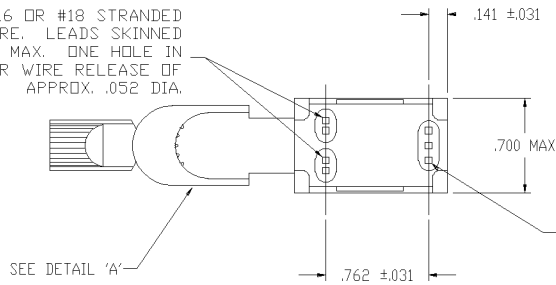


THIS DRAWING IS UNPUBLISHED. RELEASED FOR PUBLICATION  
 © COPYRIGHT BY TYCO ELECTRONICS CORPORATION. ALL RIGHTS RESERVED.

| LOC | DIST | REVISIONS      |         |     |      |
|-----|------|----------------|---------|-----|------|
| P   | LTR  | DESCRIPTION    | DATE    | DWN | APVD |
| C   |      | ECOG3G-0070-03 | 17NOV03 | MB  | RB   |

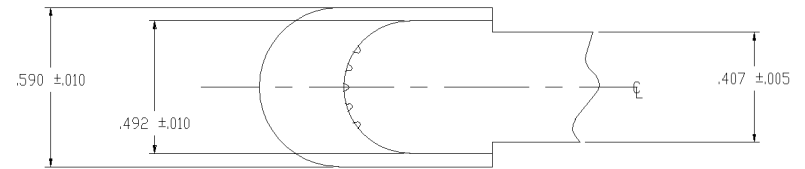


2 HOLES FOR #16 OR #18 STRANDED TIN DIPPED WIRE. LEADS SKINNED .250 MIN TO .312 MAX. ONE HOLE IN EACH RECESS FOR WIRE RELEASE OF APPROX. .052 DIA.



2 OUTER HOLES FOR #16 OR #18 STRANDED, TIN DIPPED WIRE. LEADS TO BE SKINNED .250 MIN TO .375 MAX. CENTER HOLE IS FOR WIRE RELEASE OF APPROX. .052 DIA.

1. LEAD STRIP LENGTH FOR REVERSING SWITCH TO BE .250 +.032 -.016.
2. 3 RECESSES IN BASE WILL ACCEPT MAX DIMENSION OF .120 DIA. (OVER INSULATION).



DETAIL A

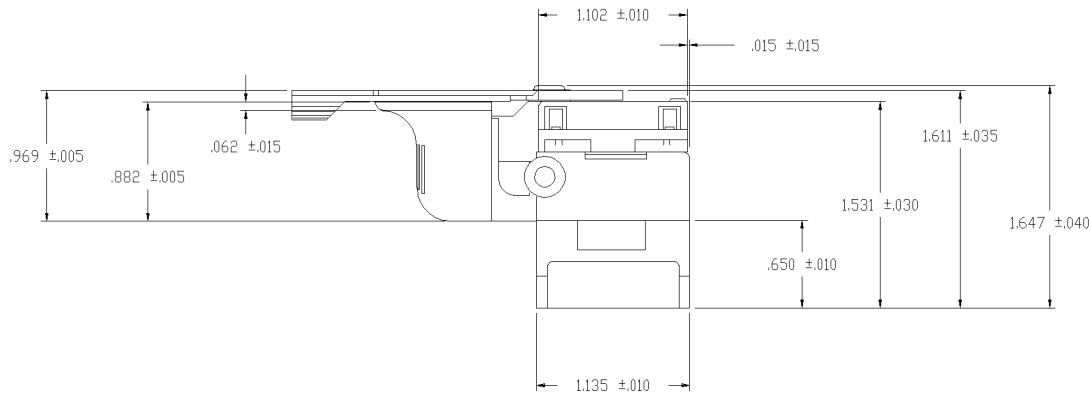
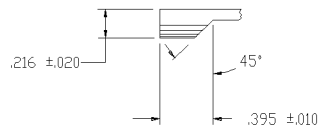
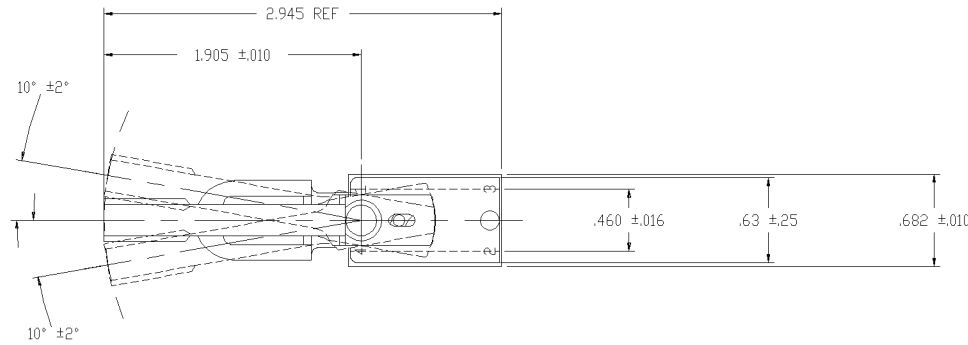
TYCO NO. 1520265-3 (ARAB NO. 8907K216) TYCO NO. 1520265-4 (ARAB NO. 8907K220) ~~TYCO NO. 1-1520265-2 (ARAB NO. 8907K436)~~

90-14583

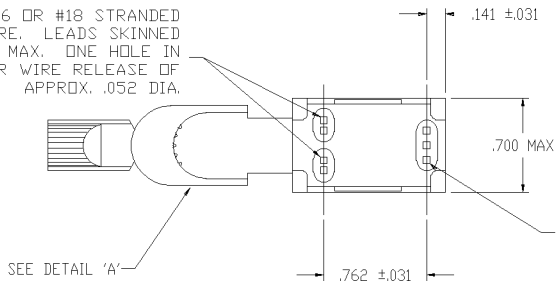
|  |  |                   |         |                            |  |   |
|--|--|-------------------|---------|----------------------------|--|---|
| THIS DRAWING IS A CONTROLLED DOCUMENT. |  | DWN<br>W. Leonard | 30JUN88 | <b>tyco</b><br>Electronics | Tyco Electronics Corporation<br>Arab, AL 35016 |   |
| DIMENSIONS:<br>INCHES                  |  | CHK<br>E. WESOLEK | 08JUL88 |                            | APVD<br>N. COLEMAN                             | NAME<br>UTILITY TRIGGER TOOL HANDLE SWITCH WITH REVERSING |
| TOLERANCES UNLESS OTHERWISE SPECIFIED: |  | PRODUCT SPEC      |         | APPLICATION SPEC           |  | SIZE<br>A2  |
| 0 PLC ± -                              |  | APPLICATION SPEC  |         | CAGE CODE<br>00779         |  | DRAWING NO<br>1520265                                     |
| 1 PLC ± -                              |  | WEIGHT            |         | RESTRICTED TO              |  | 1 OF 10   |
| 2 PLC ± -                              |  | CUSTOMER DRAWING  |         | SCALE<br>1:1               |  | SHEET   |
| 3 PLC ± -                              |  | SCALE<br>1:1      |         | REV<br>C                   |  |   |
| 4 PLC ± -                              |  | SHEET<br>1 OF 10  |         |                            |  |   |
| ANGLES ± -                             |  |                   |         |                            |  |   |
| FINISH                                 |  |                   |         |                            |  |   |

THIS DRAWING IS UNPUBLISHED.  
 RELEASED FOR PUBLICATION  
 COPYRIGHT BY TYCO ELECTRONICS CORPORATION. ALL RIGHTS RESERVED.

| LOC |     | DIST        |      | REVISIONS |      |  |  |
|-----|-----|-------------|------|-----------|------|--|--|
| P   | LTR | DESCRIPTION | DATE | OWN       | APVD |  |  |
| AD  | 00  | SEE SHEET 1 | -    | -         | -    |  |  |

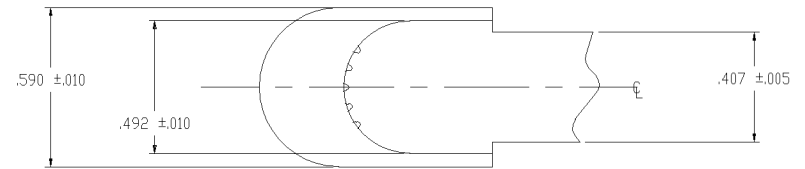


2 HOLES FOR #16 OR #18 STRANDED TIN DIPPED WIRE. LEADS SKINNED .250 MIN TO .312 MAX. ONE HOLE IN EACH RECESS FOR WIRE RELEASE OF APPROX. .052 DIA.



2 OUTER HOLES FOR #16 OR #18 STRANDED, TIN DIPPED WIRE. LEADS TO BE SKINNED .250 MIN TO .375 MAX. CENTER HOLE IS FOR WIRE RELEASE OF APPROX. .052 DIA.

1. LEAD STRIP LENGTH FOR REVERSING SWITCH TO BE .250 +.032 -.016.
2. 3 RECESSES IN BASE WILL ACCEPT MAX DIMENSION OF .120 DIA. (OVER INSULATION).



DETAIL A

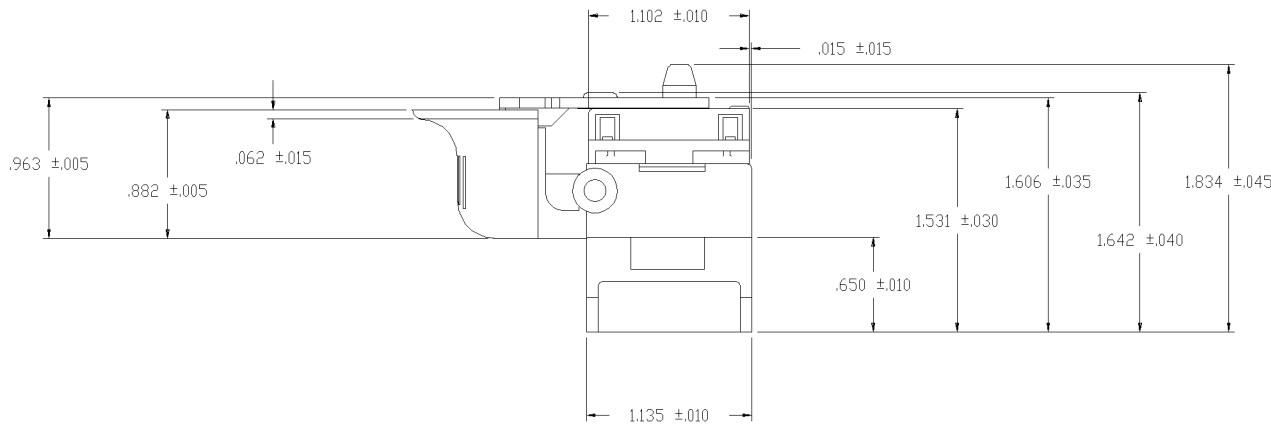
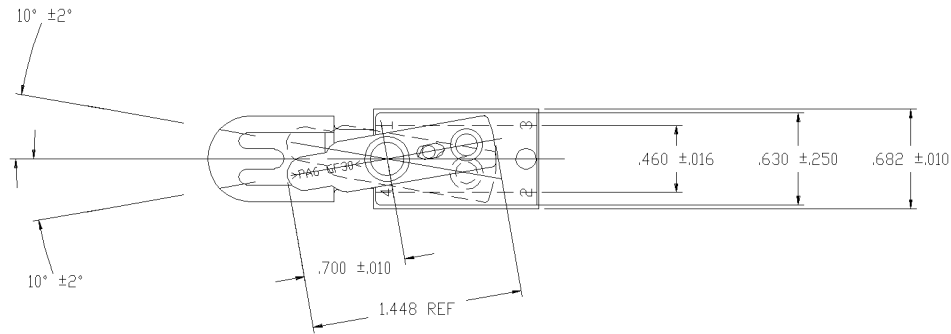
TYCO NO. 1520265-2  
 (ARAB NO. 8332K7)

91-545

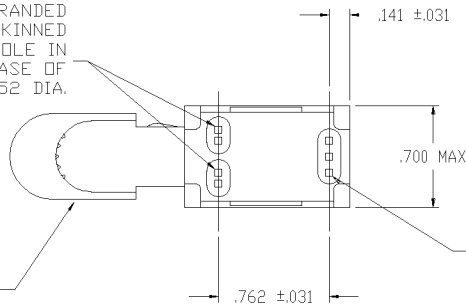
|   |  |                       |         |  |   |           |
|---|--|-----------------------|---------|--|---|-----------|
| THIS DRAWING IS A CONTROLLED DOCUMENT.  |  | DWN<br>W. HANSON      | 27SEP95 | <b>tyco</b><br>Electronics   | Tyco Electronics Corporation<br>Arab, AL 35016            |           |
| DIMENSIONS:<br>INCHES   |  | CHK<br>T. CHRISTENSEN | 27SEP95 |  | NAME<br>UTILITY TRIGGER TOOL HANDLE SWITCH WITH REVERSING |           |
| TOLERANCES UNLESS OTHERWISE SPECIFIED:<br>0 PLD ± -<br>1 PLD ± -<br>2 PLD ± -<br>3 PLD ± -<br>4 PLD ± -<br>ANGLES ± -<br>FINISH |  | APVD<br>M.R. DUMMER   | 27SEP95 | PRODUCT SPEC<br>APPLICATION SPEC<br>SIZE<br>CAGE CODE<br>DRAWING NO<br>RESTRICTED TO |   |           |
| MATERIAL  |  | WEIGHT                |         | A2 00779 C-1520265   |   | SCALE 1:1 |
| CUSTOMER DRAWING  |  |                       |         | SHEET 2 OF 10  |   | REV C     |

THIS DRAWING IS UNPUBLISHED. RELEASED FOR PUBLICATION  
 © COPYRIGHT BY TYCO ELECTRONICS CORPORATION. ALL RIGHTS RESERVED.

| LOC |     | DIST        |  | REVISIONS |     |      |  |
|-----|-----|-------------|--|-----------|-----|------|--|
| P   | LTR | DESCRIPTION |  | DATE      | OWN | APVD |  |
| -   | -   | SEE SHEET 1 |  | -         | -   | -    |  |



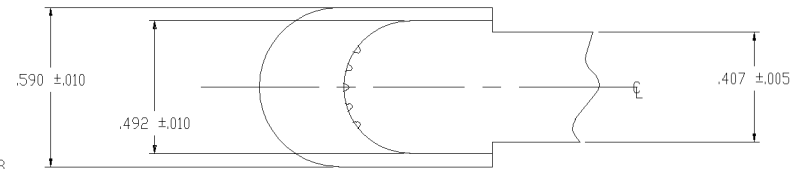
2 HOLES FOR #16 OR #18 STRANDED TIN DIPPED WIRE. LEADS SKINNED .250 MIN TO .312 MAX. ONE HOLE IN EACH RECESS FOR WIRE RELEASE OF APPROX. .052 DIA.



2 OUTER HOLES FOR #16 OR #18 STRANDED, TIN DIPPED WIRE. LEADS TO BE SKINNED .250 MIN TO .375 MAX. CENTER HOLE IS FOR WIRE RELEASE OF APPROX. .052 DIA.

SEE DETAIL "A"

1. LEAD STRIP LENGTH FOR REVERSING SWITCH TO BE .188 - .250.
2. 3 RECESSES IN BASE WILL ACCEPT MAX DIMENSION OF .120 DIA. (OVER INSULATION).



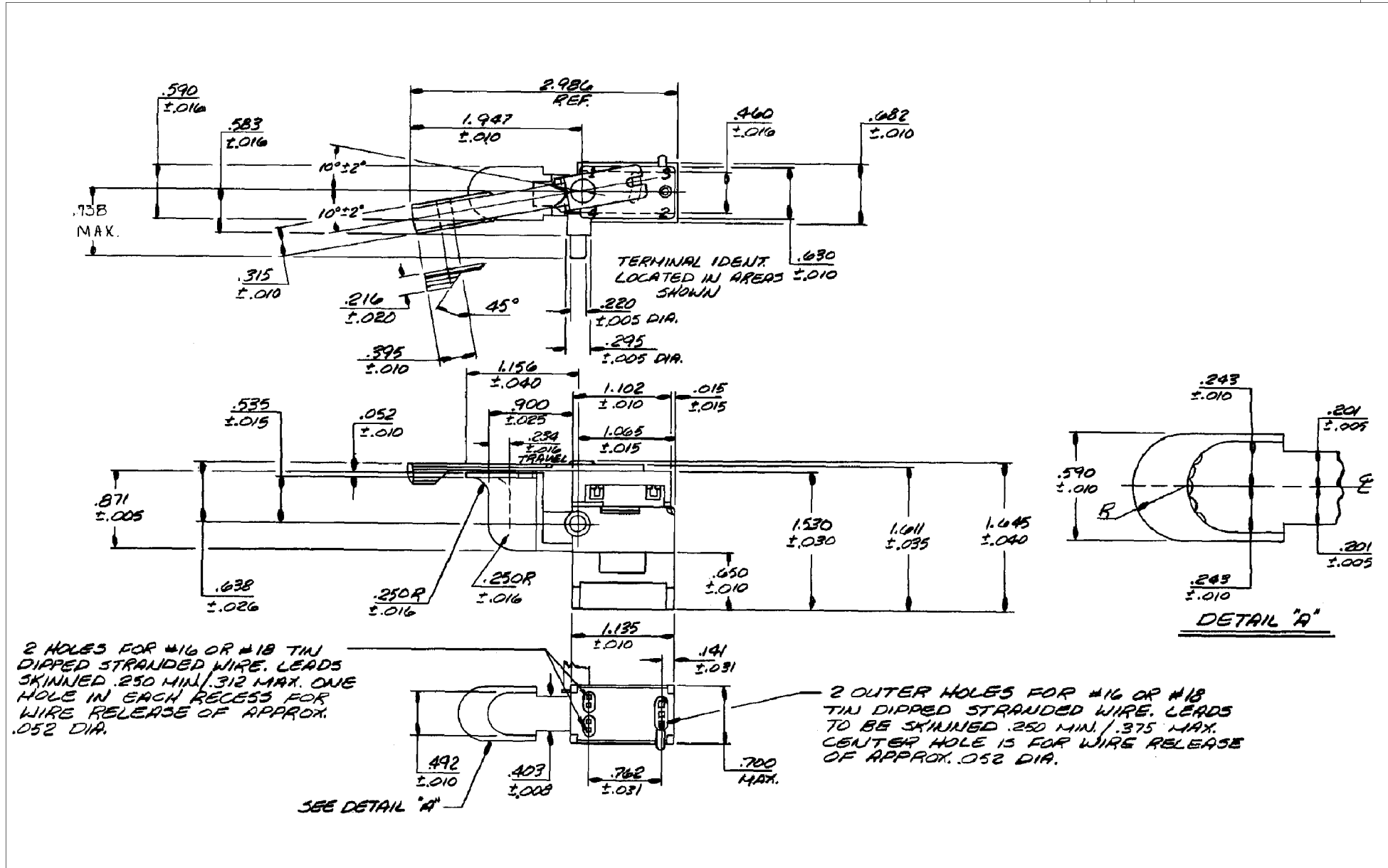
DETAIL A

91-628

|   |   |                                  |   |   |       |   |   |       |   |   |       |   |   |       |   |   |        |   |   |        |   |   |                  |                         |
|---|---|----------------------------------|---|---|-------|---|---|-------|---|---|-------|---|---|-------|---|---|--------|---|---|--------|---|---|------------------|-------------------------|
| THIS DRAWING IS A CONTROLLED DOCUMENT.  |   | DWN<br>W. HANSON<br>27SEP95      | <br>Tyco Electronics Corporation<br>Arab, AL 35016                          |   |       |   |   |       |   |   |       |   |   |       |   |   |        |   |   |        |   |   |                  |                         |
|   |   | CHK<br>T. CHRISTENSEN<br>27SEP95 |   |   |       |   |   |       |   |   |       |   |   |       |   |   |        |   |   |        |   |   |                  |                         |
| DIMENSIONS:   |   | APVD<br>M.R. DUMMER<br>27SEP95   | NAME  |   |       |   |   |       |   |   |       |   |   |       |   |   |        |   |   |        |   |   |                  |                         |
| INCHES  |   | PRODUCT SPEC                     | UTILITY TRIGGER TOOL HANDLE SWITCH WITH REVERSING (SPECIAL REVERSING LEVER) |   |       |   |   |       |   |   |       |   |   |       |   |   |        |   |   |        |   |   |                  |                         |
| <table border="1"> <tr><td>0 PLD</td><td>±</td><td>-</td></tr> <tr><td>1 PLD</td><td>±</td><td>-</td></tr> <tr><td>2 PLD</td><td>±</td><td>-</td></tr> <tr><td>3 PLD</td><td>±</td><td>-</td></tr> <tr><td>4 PLD</td><td>±</td><td>-</td></tr> <tr><td>ANGLES</td><td>±</td><td>-</td></tr> <tr><td>FINISH</td><td>±</td><td>-</td></tr> </table> |   | 0 PLD                            | ±   | - | 1 PLD | ± | - | 2 PLD | ± | - | 3 PLD | ± | - | 4 PLD | ± | - | ANGLES | ± | - | FINISH | ± | - | APPLICATION SPEC | 6A 125 VAC / 3A 250 VAC |
| 0 PLD   | ± | -                                |   |   |       |   |   |       |   |   |       |   |   |       |   |   |        |   |   |        |   |   |                  |                         |
| 1 PLD   | ± | -                                |   |   |       |   |   |       |   |   |       |   |   |       |   |   |        |   |   |        |   |   |                  |                         |
| 2 PLD   | ± | -                                |   |   |       |   |   |       |   |   |       |   |   |       |   |   |        |   |   |        |   |   |                  |                         |
| 3 PLD   | ± | -                                |   |   |       |   |   |       |   |   |       |   |   |       |   |   |        |   |   |        |   |   |                  |                         |
| 4 PLD   | ± | -                                |   |   |       |   |   |       |   |   |       |   |   |       |   |   |        |   |   |        |   |   |                  |                         |
| ANGLES  | ± | -                                |   |   |       |   |   |       |   |   |       |   |   |       |   |   |        |   |   |        |   |   |                  |                         |
| FINISH  | ± | -                                |   |   |       |   |   |       |   |   |       |   |   |       |   |   |        |   |   |        |   |   |                  |                         |
| MATERIAL  |   | WEIGHT                           | RESTRICTED TO   |   |       |   |   |       |   |   |       |   |   |       |   |   |        |   |   |        |   |   |                  |                         |
|   |   | A2 00779                         |   |   |       |   |   |       |   |   |       |   |   |       |   |   |        |   |   |        |   |   |                  |                         |
|   |   | C-1520265                        |   |   |       |   |   |       |   |   |       |   |   |       |   |   |        |   |   |        |   |   |                  |                         |
|   |   | CUSTOMER DRAWING                 | SCALE 1:1 SHEET 3 OF 10 REV C   |   |       |   |   |       |   |   |       |   |   |       |   |   |        |   |   |        |   |   |                  |                         |

TYCO NO. 1-1520265-6  
 (ARAB NO. 8907K7)

| LOC | DIST | REVISIONS |     |             |      |     |      |
|-----|------|-----------|-----|-------------|------|-----|------|
| AD  | 00   | P         | LTR | DESCRIPTION | DATE | DWN | APVD |
|     |      | -         | -   | SEE SHEET 1 | -    | -   | -    |



2 HOLES FOR #16 OR #18 TIN DIPPED STRANDED WIRE. LEADS SKINNED .250 MIN / .312 MAX. ONE HOLE IN EACH RECESS FOR WIRE RELEASE OF APPROX. .052 DIA.

2 OUTER HOLES FOR #16 OR #18 TIN DIPPED STRANDED WIRE. LEADS TO BE SKINNED .250 MIN / .375 MAX. CENTER HOLE IS FOR WIRE RELEASE OF APPROX. .052 DIA.

SEE DETAIL "A"

1. LEAD STRIP LENGTH FOR REVERSING SWITCH TO BE .250 +.032 -.016.
2. 3 RECESSES IN BASE WILL ACCEPT MAX DIMENSION OF .120 DIA. (OVER INSULATION).

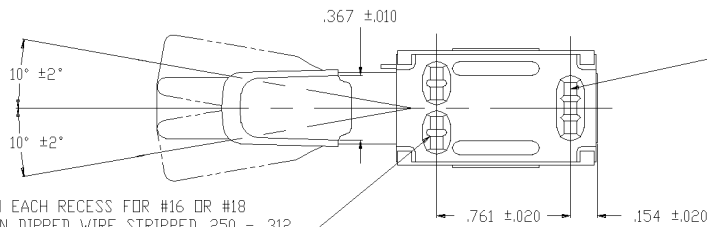
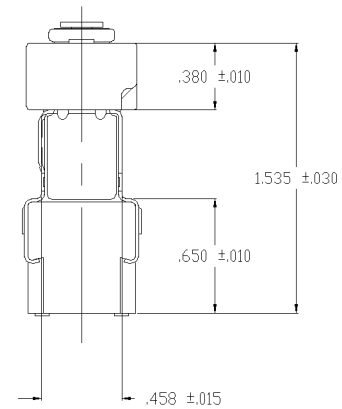
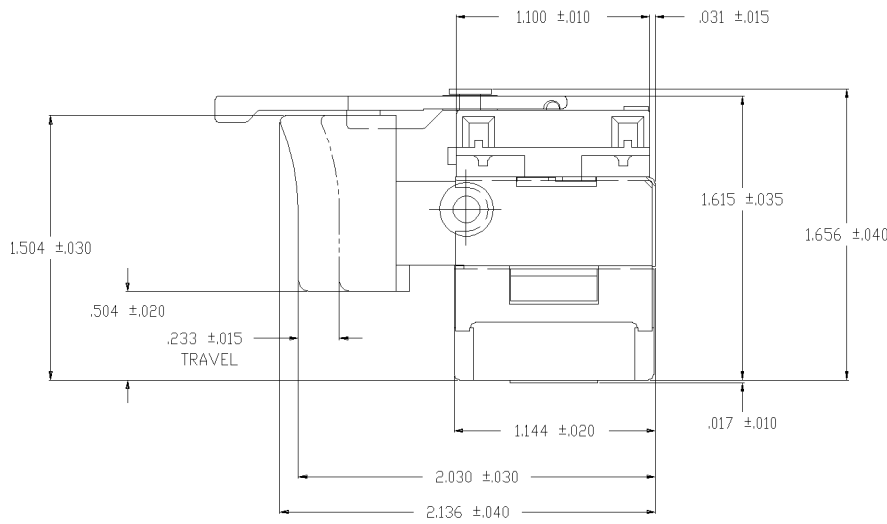
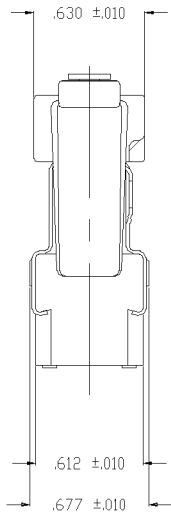
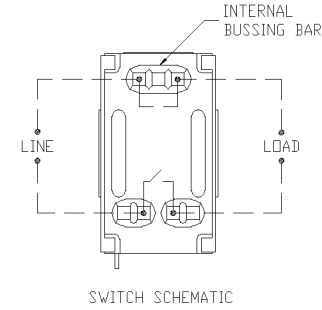
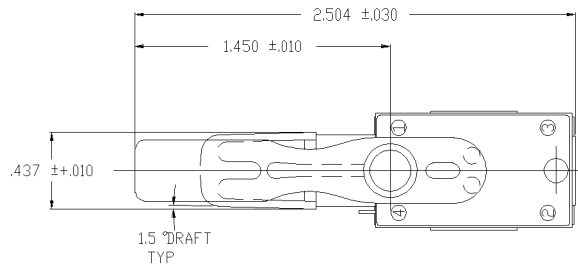
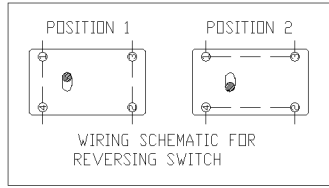
TYCO NO. 1520265-9 (ARAB NO. 8907K370) TYCO NO. 1-1520265-3 (ARAB NO. 8907K472) TYCO NO. 1-1520265-4 (ARAB NO. 8907K495)

90-11809

| THIS DRAWING IS A CONTROLLED DOCUMENT.  |        | DWN<br>B. THOMPSON<br>12JAN83          | <br>Tyco Electronics Corporation<br>Arab, AL 35016                                   |         |   |         |   |         |   |         |   |         |   |          |   |                       |                    |
|---|--------|--|--|---------|---|---------|---|---------|---|---------|---|---------|---|----------|---|-----------------------|--------------------|
|   |        | CHK<br>B. THOMPSON<br>12JAN83          |  |         |   |         |   |         |   |         |   |         |   |          |   |                       |                    |
| DIMENSIONS:<br>INCHES   |        | APVD<br>P. YANCEY<br>12JAN83           | NAME<br>UTILITY TRIGGER TOOL HANDLE SWITCH WITH REVERSING<br>6A 125 VAC / 3A 250 VAC |         |   |         |   |         |   |         |   |         |   |          |   |                       |                    |
| <table border="1"> <thead> <tr> <th>TOLERANCES UNLESS OTHERWISE SPECIFIED:</th> <th>FINISH</th> </tr> </thead> <tbody> <tr> <td>0 PLC ±</td> <td>-</td> </tr> <tr> <td>1 PLC ±</td> <td>-</td> </tr> <tr> <td>2 PLC ±</td> <td>-</td> </tr> <tr> <td>3 PLC ±</td> <td>-</td> </tr> <tr> <td>4 PLC ±</td> <td>-</td> </tr> <tr> <td>ANGLES ±</td> <td>-</td> </tr> </tbody> </table> |        | TOLERANCES UNLESS OTHERWISE SPECIFIED: | FINISH   | 0 PLC ± | - | 1 PLC ± | - | 2 PLC ± | - | 3 PLC ± | - | 4 PLC ± | - | ANGLES ± | - | APPLICATION SPEC<br>- | RESTRICTED TO<br>- |
| TOLERANCES UNLESS OTHERWISE SPECIFIED:  | FINISH |  |  |         |   |         |   |         |   |         |   |         |   |          |   |                       |                    |
| 0 PLC ±   | -      |  |  |         |   |         |   |         |   |         |   |         |   |          |   |                       |                    |
| 1 PLC ±   | -      |  |  |         |   |         |   |         |   |         |   |         |   |          |   |                       |                    |
| 2 PLC ±   | -      |  |  |         |   |         |   |         |   |         |   |         |   |          |   |                       |                    |
| 3 PLC ±   | -      |  |  |         |   |         |   |         |   |         |   |         |   |          |   |                       |                    |
| 4 PLC ±   | -      |  |  |         |   |         |   |         |   |         |   |         |   |          |   |                       |                    |
| ANGLES ±  | -      |  |  |         |   |         |   |         |   |         |   |         |   |          |   |                       |                    |
| MATERIAL<br>-   |        | WEIGHT<br>-                            | SIZE<br>A2   |         |   |         |   |         |   |         |   |         |   |          |   |                       |                    |
|   |        | CUSTOMER DRAWING                       | SCALE<br>1:1   |         |   |         |   |         |   |         |   |         |   |          |   |                       |                    |
|   |        |  | SHEET<br>4 OF 10   |         |   |         |   |         |   |         |   |         |   |          |   |                       |                    |
|   |        |  | REV<br>C   |         |   |         |   |         |   |         |   |         |   |          |   |                       |                    |

THIS DRAWING IS UNPUBLISHED. RELEASED FOR PUBLICATION  
 BY TYCO ELECTRONICS CORPORATION. ALL RIGHTS RESERVED.

| LOC |     | DIST        |      | REVISIONS |      |  |  |
|-----|-----|-------------|------|-----------|------|--|--|
| P   | LTR | DESCRIPTION | DATE | OWN       | APVD |  |  |
| AD  | 00  | SEE SHEET 1 |      |           |      |  |  |



ONE HOLE IN EACH RECESS FOR #16 OR #18 STRANDED TIN DIPPED WIRE STRIPPED .250 - .312.  
 ONE HOLE IN EACH RECESS FOR .052 DIA. WIRE RELEASE.

TWO OUTER HOLES FOR #16 OR #18 STRANDED TIN DIPPED WIRE STRIPPED .250 - .375.  
 CENTER HOLE FOR .052 DIA. WIRE RELEASE.

1. LEAD STRIP LENGTH FOR REVERSING SWITCH TO BE .250 +.032 -.016.
2. 3 RECESSES IN BASE WILL ACCEPT MAX DIMENSION OF .120 DIA. (OVER INSULATION).

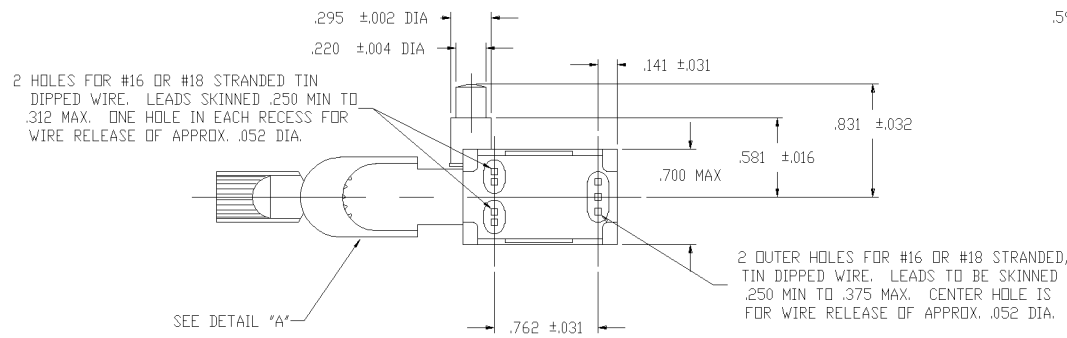
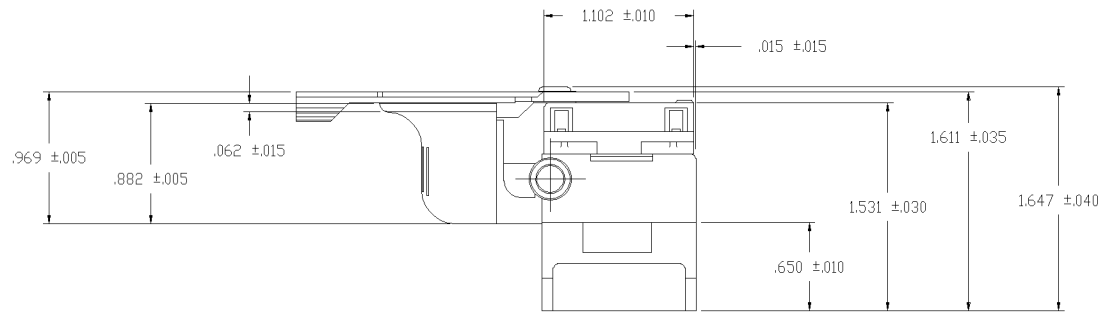
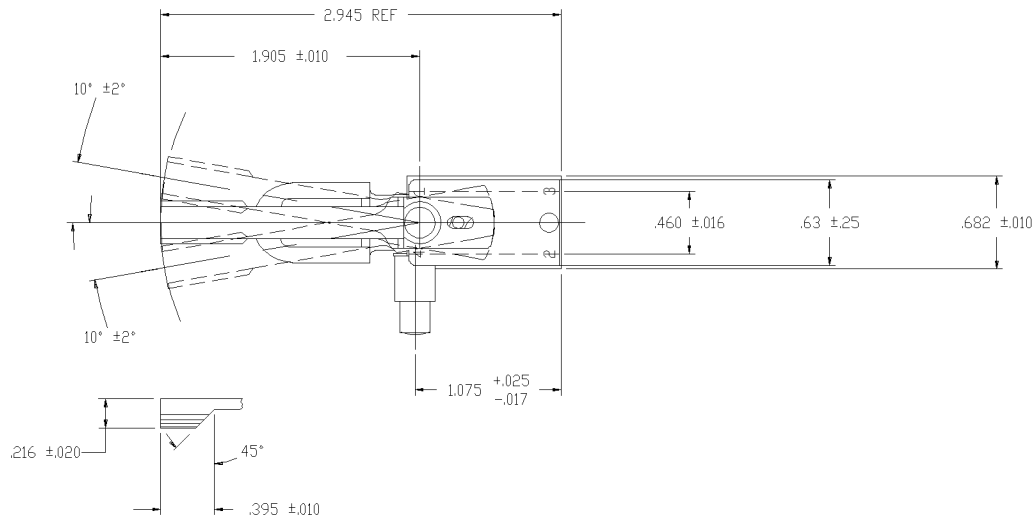
TYCO NO. 1520265-7  
 (ARAB NO. 8907K311)

90-15562

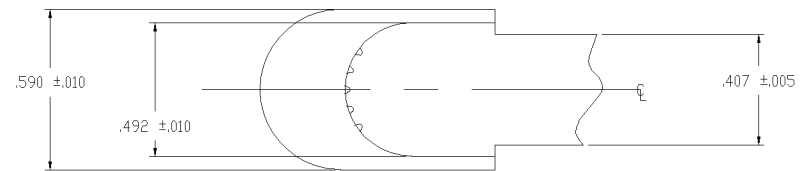
|   |  |                         |   |  |       |
|---|--|-------------------------|---|--|-------|
| THIS DRAWING IS A CONTROLLED DOCUMENT.              |  | DWN WESTEMEIER 06JUN90  | <b>tyco</b><br>Electronics              | Tyco Electronics Corporation<br>Arab, AL 35016   |       |
| DIMENSIONS:<br>INCHES                               |  | CHK E. WESOLEK 07JUN90  |   | NAME<br>UTILITY TRIGGER TOOL HANDLE SWITCH<br>WITH REVERSING<br>12A 125 VAC / 6A 250 VAC |       |
| TOLERANCES UNLESS OTHERWISE SPECIFIED:              |  | APVD E. WESOLEK 07JUN90 | SIZE CASE CODE DRAWING NO RESTRICTED TO |  |       |
| 0 PLC ±<br>1 PLC ±<br>2 PLC ±<br>3 PLC ±<br>4 PLC ± |  | PRODUCT SPEC            | A2 00779 C=1520265                      |  |       |
| ANGLES ±<br>FINISH                                  |  | APPLICATION SPEC        | WEIGHT                                  |  |       |
| MATERIAL  |  | SCALE 1:1               | SHEET 5 OF 10                           |  | REV C |
|   |  | CUSTOMER DRAWING        |   |  |       |

THIS DRAWING IS UNPUBLISHED.  
 RELEASED FOR PUBLICATION  
 BY TYCO ELECTRONICS CORPORATION. ALL RIGHTS RESERVED.

| LOC | DIST | REVISIONS |     |             |      |     |      |
|-----|------|-----------|-----|-------------|------|-----|------|
| AD  | 00   | P         | LTR | DESCRIPTION | DATE | OWN | APVD |
|     |      | -         |     | SEE SHEET 1 | -    | -   | -    |



1. LEAD STRIP LENGTH FOR REVERSING SWITCH TO BE .250 +.032 -.016.
2. 3 RECESSES IN BASE WILL ACCEPT MAX DIMENSION OF .120 DIA. (OVER INSULATION).



DETAIL A

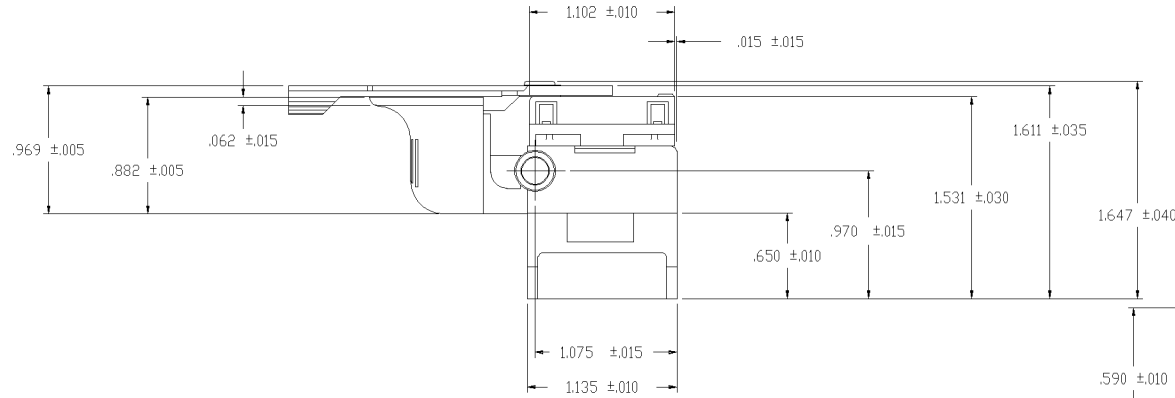
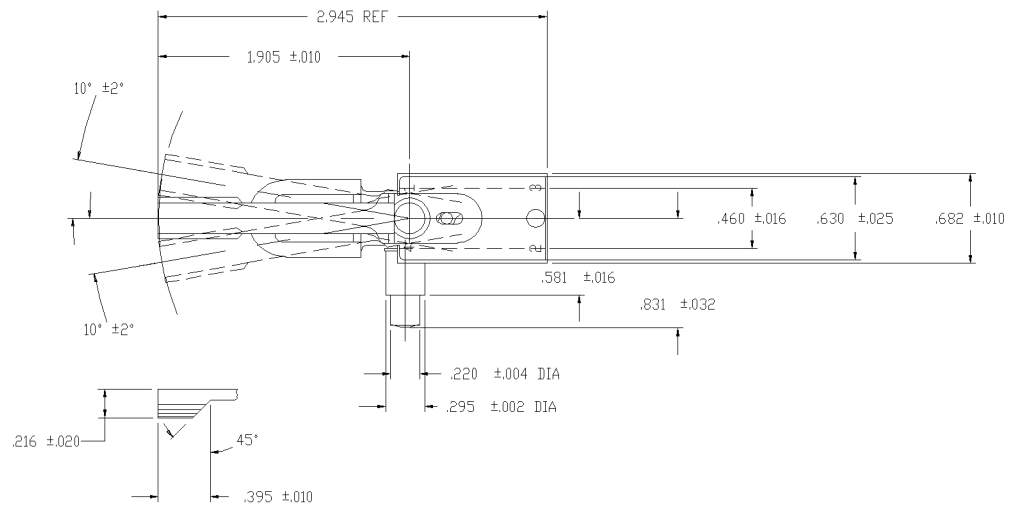
TYCO NO. 1520265-8  
 (ARAB NO. 8907K350)

91-602

|   |  |                              |  |  |
|---|--|------------------------------|--|--|
| THIS DRAWING IS A CONTROLLED DOCUMENT.  |  | DWN<br>W. HANSON<br>300CT95  | Tyco Electronics Corporation<br>Arab, AL 35016 |  |
| DIMENSIONS:<br>INCHES   |  | CHK<br>W. Leonard<br>300CT95 | NAME<br>M.R. DUMMER<br>300CT95                 |  |
|   |  | PRODUCT SPEC                 |  | UTILITY TRIGGER TOOL HANDLE SWITCH<br>WITH REVERSING<br>12A 125 VAC / 6A 250 VAC |
| TOLERANCES UNLESS OTHERWISE SPECIFIED:<br>0 PLC ± -<br>1 PLC ± -<br>2 PLC ± -<br>3 PLC ± -<br>4 PLC ± -<br>ANGLES ± -<br>FINISH |  | APPLICATION SPEC             |  | RESTRICTED TO  |
| MATERIAL  |  | WEIGHT                       |  | SCALE 1:1 SHEET 6 OF 10 REV C  |
|   |  | CUSTOMER DRAWING             |  | SIZE CAGE CODE DRAWING NO<br>A2 00779 C-1520265                                  |

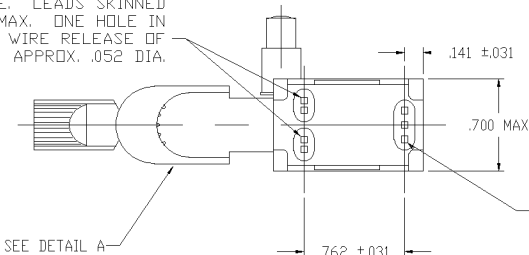
THIS DRAWING IS UNPUBLISHED. RELEASED FOR PUBLICATION  
 COPYRIGHT BY TYCO ELECTRONICS CORPORATION. ALL RIGHTS RESERVED.

| LOC |     | DIST        |      | REVISIONS |      |  |  |
|-----|-----|-------------|------|-----------|------|--|--|
| P   | LTR | DESCRIPTION | DATE | OWN       | APVD |  |  |
| -   | -   | SEE SHEET 1 | -    | -         | -    |  |  |

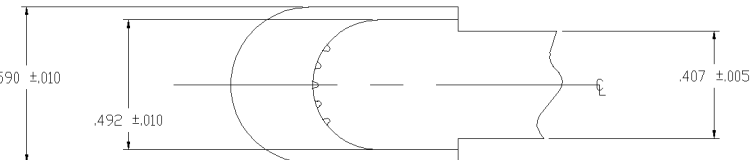


1. LEAD STRIP LENGTH FOR REVERSING SWITCH TO BE .250 +.032 -.016.
2. 3 RECESSES IN BASE WILL ACCEPT MAX DIMENSION OF .120 DIA. (OVER INSULATION).

2 HOLES FOR #16 OR #18 STRANDED TIN DIPPED WIRE. LEADS SKINNED .250 MIN TO .312 MAX. ONE HOLE IN EACH RECESS FOR WIRE RELEASE OF APPROX. .052 DIA.



2 OUTER HOLES FOR #16 OR #18 STRANDED, TIN DIPPED WIRE. LEADS TO BE SKINNED .250 MIN TO .375 MAX. CENTER HOLE IS FOR WIRE RELEASE OF APPROX. .052 DIA.



DETAIL A

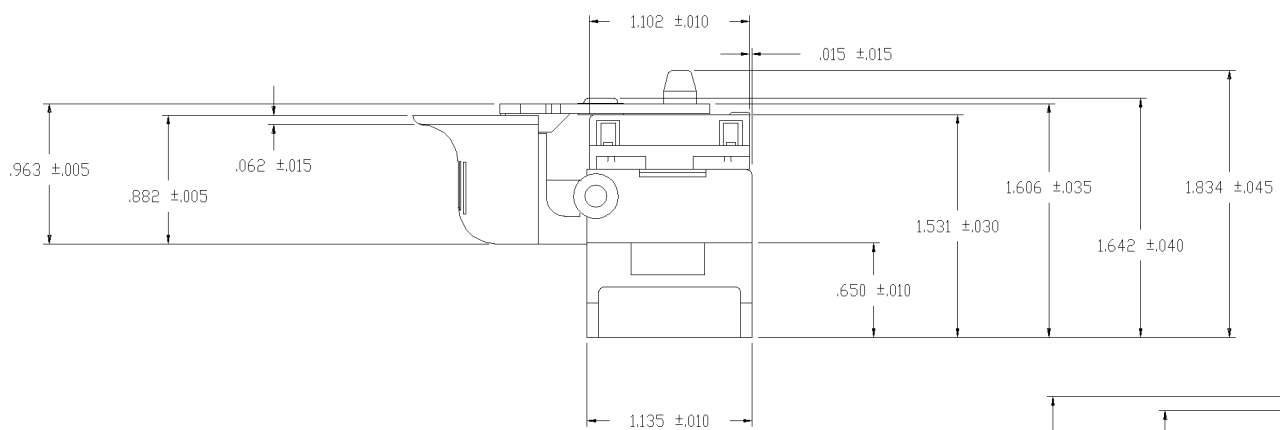
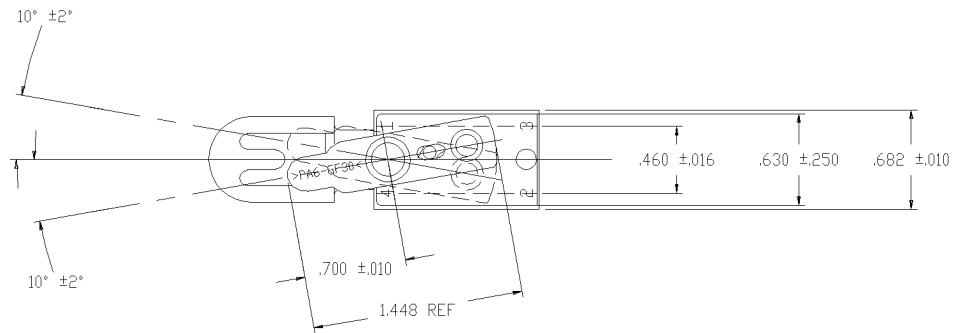
TYCO NO. 1520265-1  
(ARAB NO. 8332K6)

91-652

|   |  |                                  |                                |                    |  |                  |
|---|--|----------------------------------|--------------------------------|--------------------|--|------------------|
| THIS DRAWING IS A CONTROLLED DOCUMENT.  |  | DWN<br>W. HANSON<br>07MAR96      | tyco<br>Electronics            |                    | Tyco Electronics Corporation<br>Arab, AL 35016       |                  |
| DIMENSIONS:<br>INCHES   |  | CHK<br>T. CHRISTENSEN<br>07MAR96 | NAME<br>M.R. DUMMER<br>07MAR96 |                    | UTILITY TRIGGER TOOL HANDLE SWITCH<br>WITH REVERSING |                  |
| TOLERANCES UNLESS OTHERWISE SPECIFIED:<br>0 PLC ± -<br>1 PLC ± -<br>2 PLC ± -<br>3 PLC ± -<br>4 PLC ± -<br>ANGLES ± -<br>FINISH |  | APVD<br>M.R. DUMMER<br>07MAR96   | PRODUCT SPEC                   |                    | 12A 125 VAC / 6A 250 VAC / 14A 12 VDC                |                  |
| MATERIAL  |  | APPLICATION SPEC                 | SIZE<br>A2                     | CAGE CODE<br>00779 | DRAWING NO<br>C-1520265                              | RESTRICTED TO    |
|   |  | WEIGHT                           | CUSTOMER DRAWING               |                    | SCALE<br>1:1   | SHEET<br>7 OF 10 |

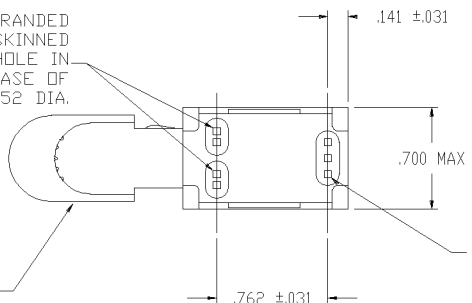
THIS DRAWING IS UNPUBLISHED. RELEASED FOR PUBLICATION  
 © COPYRIGHT BY TYCO ELECTRONICS CORPORATION. ALL RIGHTS RESERVED.

| LOC | DIST | REVISIONS |     |             |      |     |      |
|-----|------|-----------|-----|-------------|------|-----|------|
| AD  | 00   | P         | LTR | DESCRIPTION | DATE | OWN | APVD |
|     |      | -         | -   | SEE SHEET 1 | -    | -   | -    |

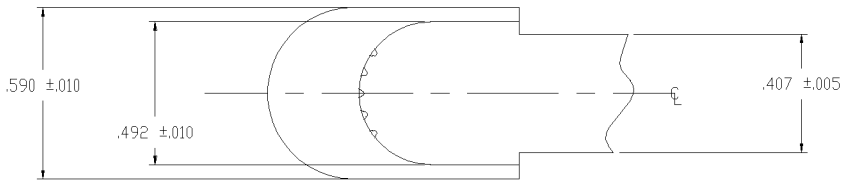


1. LEAD STRIP LENGTH FOR REVERSING SWITCH TO BE .250 +.032 -.016.
2. 3 RECESSES IN BASE WILL ACCEPT MAX DIMENSION OF .120 DIA. (OVER INSULATION).

2 HOLES FOR #16 OR #18 STRANDED TIN DIPPED WIRE. LEADS SKINNED .250 MIN TO .312 MAX. ONE HOLE IN EACH RECESS FOR WIRE RELEASE OF APPROX. .052 DIA.



2 OUTER HOLES FOR #16 OR #18 STRANDED, TIN DIPPED WIRE. LEADS TO BE SKINNED .250 MIN TO .375 MAX. CENTER HOLE IS FOR WIRE RELEASE OF APPROX. .052 DIA.



DETAIL A

TYCO NO. 1-1520265-5  
 (ARAB NO. 8907K56)

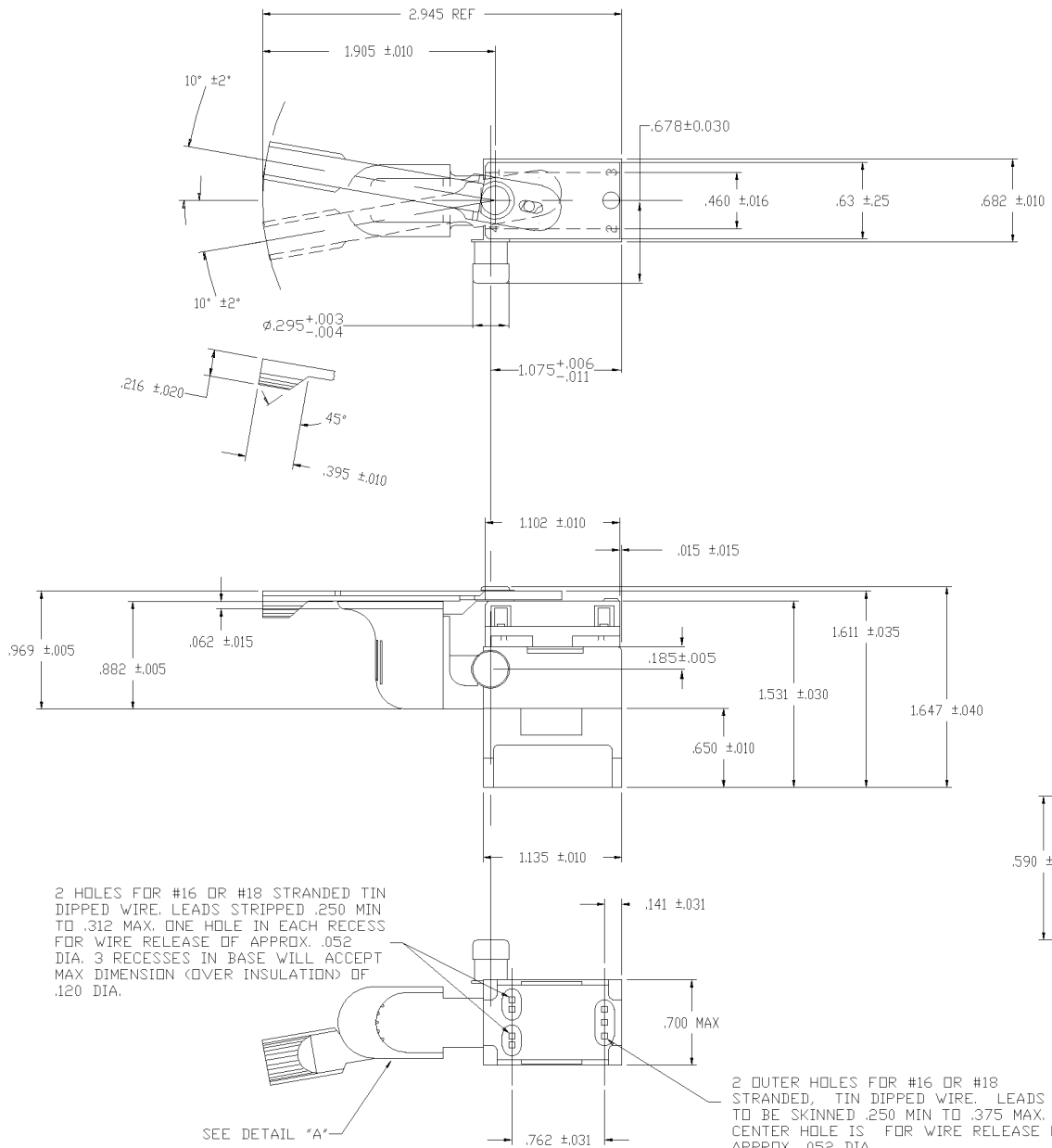
91-759

|  |            |   |   |                               |
|--|------------|---|---|-------------------------------|
| THIS DRAWING IS A CONTROLLED DOCUMENT. |            | DWN<br>L. CHRISTENSEN<br>28OCT96  | tyco Tyco Electronics Corporation<br>Arab, AL 35016 |                               |
| DIMENSIONS:<br>INCHES                  |            | CHK<br>W. HANSON<br>31OCT96   | APVD<br>M.R. DUMMER<br>05NOV96                      |                               |
| TOLERANCES UNLESS OTHERWISE SPECIFIED: |            | NAME<br>UTILITY TRIGGER TOOL HANDLE SWITCH WITH REVERSING (SPECIAL REVERSING LEVER)<br>14A 12 VDC |   |                               |
| 0 PLC ± -                              | 1 PLC ± -  | PRODUCT SPEC  |   |                               |
| 2 PLC ± -                              | 3 PLC ± -  | APPLICATION SPEC  |   |                               |
| 4 PLC ± -                              | ANGLES ± - | SIZE CAGE CODE DRAWING NO<br>A2 00779 C-1520265   |   |                               |
| MATERIAL                               |            | WEIGHT  |   | RESTRICTED TO                 |
| -                                      |            | -   |   | -                             |
| FINISH                                 |            | CUSTOMER DRAWING  |   | SCALE 1:1 SHEET 8 OF 10 REV C |



THIS DRAWING IS UNPUBLISHED. RELEASED FOR PUBLICATION  
 © COPYRIGHT BY TYCO ELECTRONICS CORPORATION. ALL RIGHTS RESERVED.

| LOC |     | DIST        |      | REVISIONS |      |  |  |
|-----|-----|-------------|------|-----------|------|--|--|
| P   | LTR | DESCRIPTION | DATE | OWN       | APVD |  |  |
| C   |     | SEE SHEET 1 | -    | -         | -    |  |  |

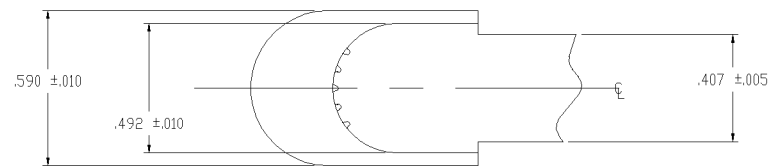


2 HOLES FOR #16 OR #18 STRANDED TIN DIPPED WIRE. LEADS STRIPPED .250 MIN TO .312 MAX. ONE HOLE IN EACH RECESS FOR WIRE RELEASE OF APPROX. .052 DIA. 3 RECESSES IN BASE WILL ACCEPT MAX DIMENSION (OVER INSULATION) OF .120 DIA.

2 OUTER HOLES FOR #16 OR #18 STRANDED, TIN DIPPED WIRE. LEADS TO BE SKINNED .250 MIN TO .375 MAX. CENTER HOLE IS FOR WIRE RELEASE OF APPROX. .052 DIA.

SEE DETAIL "A"

1. LEAD STRIP LENGTH FOR REVERSING SWITCH TO BE .250 +.032 -.016.



DETAIL A

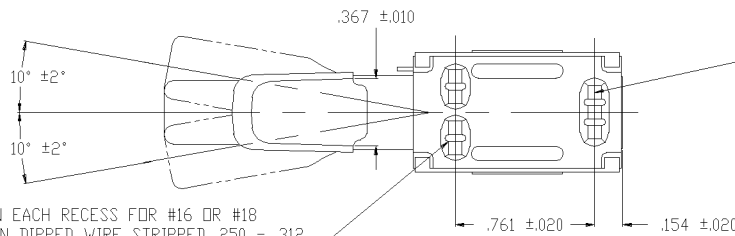
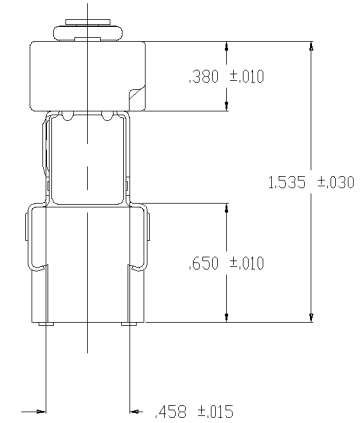
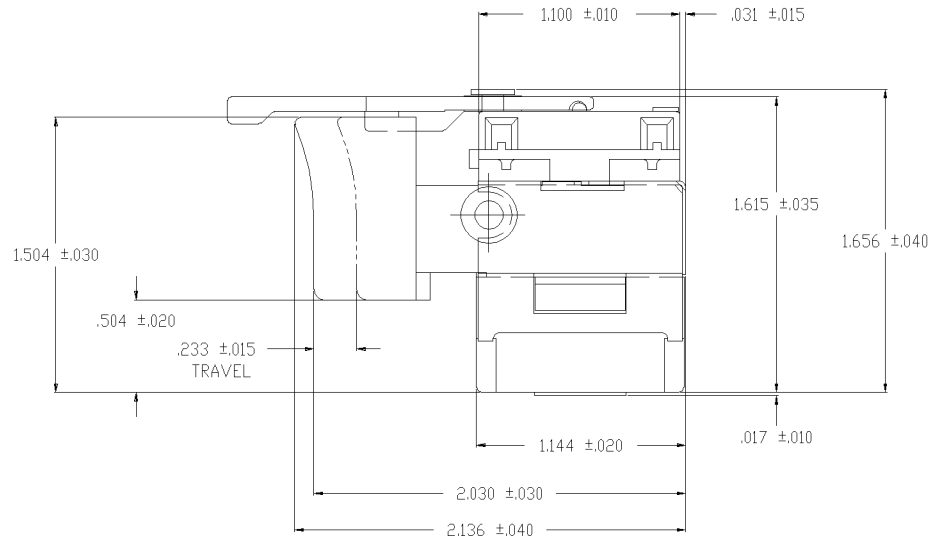
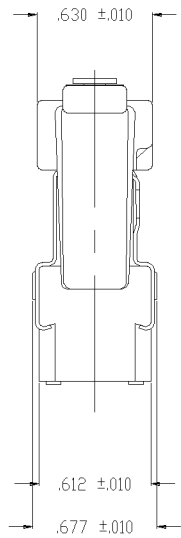
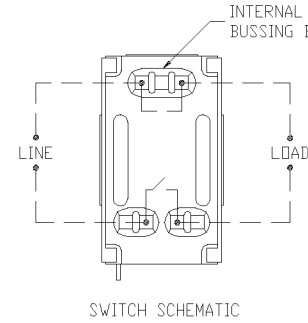
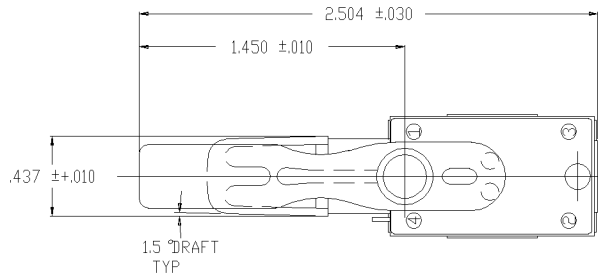
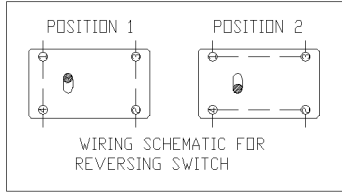
TYCO NO. 1-1520265-0  
 (ARAB NO. 8907K411)

91-16243

|  |  |                       |         |   |   |  |
|--|--|-----------------------|---------|---|---|--|
| THIS DRAWING IS A CONTROLLED DOCUMENT. |  | DWN<br>W. Leonard     | 25FEB00 | <b>tyco</b><br>Electronics              | Tyco Electronics Corporation<br>Arab, AL 35016  |  |
| DIMENSIONS:<br>INCHES                  |  | CHK<br>T. CHRISTENSEN | 25FEB00 |   | NAME<br>UTILITY TRIGGER TOOL HANDLE SWITCH WITH REVERSING & DUMMY LOCK PIN 12A 125 VAC / 6A 250 VAC |  |
| TOLERANCES UNLESS OTHERWISE SPECIFIED: |  | APVD<br>M. WARDRUP    | 25FEB00 | PRODUCT SPEC                            |   |  |
| 0 PLC ± -                              |  | APPLICATION SPEC      |         | SIZE CAGE CODE DRAWING NO RESTRICTED TO |   |  |
| 1 PLC ± -                              |  | WEIGHT                |         | A2 00779 C-1520265                      |   |  |
| 2 PLC ± -                              |  | CUSTOMER DRAWING      |         | SCALE 1:1 SHEET 9 OF 10 REV C           |   |  |
| 3 PLC ± -                              |  |                       |         |   |   |  |
| 4 PLC ± -                              |  |                       |         |   |   |  |
| ANGLES ± -                             |  |                       |         |   |   |  |
| FINISH                                 |  |                       |         |   |   |  |

THIS DRAWING IS UNPUBLISHED. RELEASED FOR PUBLICATION  
 BY TYCO ELECTRONICS CORPORATION. ALL RIGHTS RESERVED.

| LOC | DIST | REVISIONS   |      |     |      |
|-----|------|-------------|------|-----|------|
| P   | LTR  | DESCRIPTION | DATE | OWN | APVD |
| C   |      | SEE SHEET 1 | -    | -   | -    |



TWO OUTER HOLES FOR #16 OR #18 STRANDED TIN DIPPED WIRE STRIPPED .250 - .375. CENTER HOLE FOR .052 DIA. WIRE RELEASE.

ONE HOLE IN EACH RECESS FOR #16 OR #18 STRANDED TIN DIPPED WIRE STRIPPED .250 - .312. ONE HOLE IN EACH RECESS FOR .052 DIA. WIRE RELEASE.

1. LEAD STRIP LENGTH FOR REVERSING SWITCH TO BE .250 +.032 -.016.
2. 3 RECESSES IN BASE WILL ACCEPT MAX DIMENSION OF .120 DIA. (OVER INSULATION).

91-475

TYCO NO. 1-1520265-1  
(ARAB NO. 8907K417)

|   |  |                    |         |                            |  |   |
|---|--|--------------------|---------|----------------------------|--|---|
| THIS DRAWING IS A CONTROLLED DOCUMENT.  |  | DWN<br>W. HANSON   | 29APR84 | <b>tyco</b><br>Electronics | Tyco Electronics Corporation<br>Arab, AL 35016 |   |
| DIMENSIONS:<br>INCHES   |  | CHK<br>W. LeonardD | 03MAY94 |                            | NAME   | UTILITY TRIGGER TOOL HANDLE SWITCH WITH REVERSING |
| TOLERANCES UNLESS OTHERWISE SPECIFIED:  |  | APVD<br>E. WESOLEK | 03MAY94 | PRODUCT SPEC               | 12A 125 VAC / 6A 250 VAC                       |   |
| 0 PLC ± -<br>1 PLC ± -<br>2 PLC ± -<br>3 PLC ± -<br>4 PLC ± -<br>ANGLES ± -<br>FINISH |  | APPLICATION SPEC   |         | SIZE                       | CAGE CODE                                      | DRAWING NO  |
| MATERIAL  |  | WEIGHT             |         | A2                         | 00779  | C=1520265   |
| CUSTOMER DRAWING  |  |                    |         | SCALE                      | 1:1  | SHEET 10 OF 10                                    |
|   |  |                    |         | REV                        | B  |   |