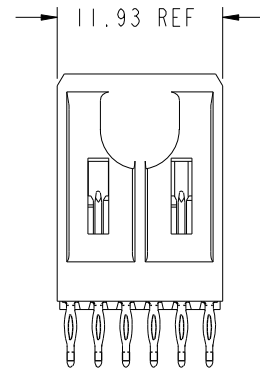
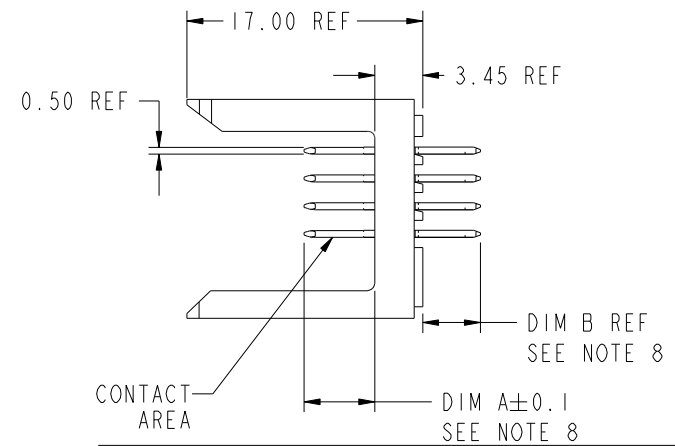
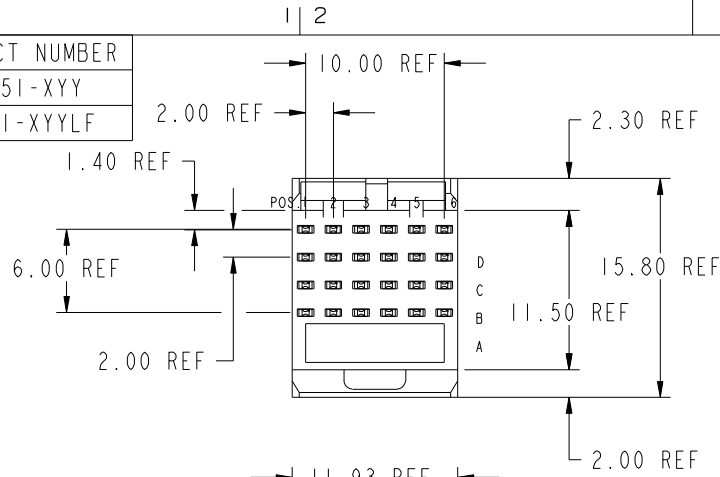


PRODUCT NUMBER
85851-XXX
85851-XXYLF



PLATING IN CONTACT AREA		
DASH NUMBER	PERFORMANCE LEVEL	NOTES
-Ayy	TELCORDIA CO	SEE NOTE 9
-N1yy	TELCORDIA CO (NXT)	-
-N5yy	TELCORDIA UE (NXT)	-
-1yy	TELCORDIA CO	-
-2yy	TELECOM CLASS	-
-3yy	IEC CLASS I	-
-5yy	TELCORDIA UE	-
-9yy	TELCORDIA CO	-
-N1yyLF	TELCORDIA CO (NXT) IEC CLASS I	SEE NOTE 10
-N5yyLF	TELCORDIA UE (NXT)	SEE NOTE 10
-1yyLF	TELCORDIA CO IEC CLASS I	SEE NOTE 10
-2yyLF	TELECOM CLASS	SEE NOTE 10
-5yyLF	TELCORDIA UE	SEE NOTE 10



This document is the property of and embodies CONFIDENTIAL and PROPRIETARY information of FCI. No part of the information shown on this document may be used in any way or disclosed to others without the written consent of FCI. Copyright FCI.

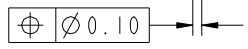
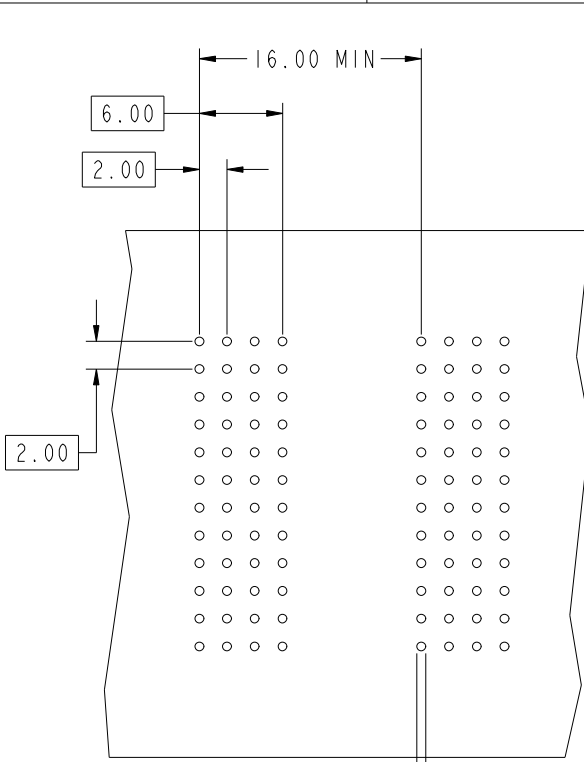
mat'l code				SEE NOTES		tolerances unless otherwise specified		CUSTOMER		FCI	
ltr	ecn no.	dr	date	linear	0.X ± 0.3	COPY		projection		www.fciconnect.com	
AA	V06-0569	DCH	2006-06-13		0.XX ± 0.13	MIM		title		METRAL SIGNAL HEADER	
AB	V07-0206	DCH	2007-03-06		.XXX ± .051	MIM		product family		METRAL	
AC	DG10-0165	TER	2010-05-05	angles	0° ± 2°	MIM		size		213	
-	-	-	-	dr	T.BRUNGARD 11/19/99	MIM		dwg no		85851	
W	V04-1216	HTB	12/23/04	enrg	M.STRAWSER 11/19/99	MIM		scale		1 of 4	
X	V05-0099	HTB	01/27/05	chr	M.STRAWSER 11/19/99	MIM		A			
Y	V05-0367	DAI	05/25/05	appd	M.STRAWSER 02/29/00	MIM		2:1			
sheet index	revision sheet	AC 1	AC 2	AC 3	AC 4	sheet		cage code		22526	

REV E - 2008-04-18

Pro/E 3 cage code 22526 4



This document is the property of and embodies CONFIDENTIAL and PROPRIETARY information of FCI. No part of the information shown on this document may be used in any way or disclosed to others without the written consent of FCI. Copyright FCI.



REQUIRED PC BOARD LAYOUT
COMPONENT SIDE
SEE PRINT 58351 FOR
ADDITIONAL PCB INFORMATION

KEY (SIGNAL PRESS-FIT)		
CODE	DIMENSIONS	
	DIM "A" MATE	DIM "B" TAIL
1	5.00	4.30
2	5.75	4.30
3	6.50	4.30
4	7.25	4.30
5	5.00	13.60
6	5.75	13.60
7	6.50	13.60
8	7.25	13.60
12	7.25	17.00
13	8.25	4.30
19	8.00	4.30
20	8.00	13.60
23	8.00	17.70
24	6.50	16.30
25	5.75	15.60
26	5.00	14.90
40	5.00	15.60
41	6.50	15.60
59	5.00	11.80
60	5.75	11.80
61	6.50	11.80

mat'l code				--		tolerances unless otherwise specified		CUSTOMER		 www.fciconnect.com		
ltr	ecr no.	dr	date	linear	0.X ±0.3		COPY		 title	METRAL SIGNAL HEADER		
AC					0.XX ±0.13		 product family			METRAL		code
					.XXX ±.051		 size			dwg no		213
				angles	0° ±2°		 scale		 sheet		2	
				dr	T. BRUNGARD	11/19/99	1:1		 cage code			
				enr	M. STRAWSER	11/19/99			85851			
				chr	M. STRAWSER	11/19/99						
				appd	M. STRAWSER	02/29/00						
sheet index	revision sheet											



This document is the property of and embodies CONFIDENTIAL and PROPRIETARY information of FCI. No part of the information shown on this document may be used in any way or disclosed to others without the written consent of FCI. Copyright FCI.

METRAL P/N	ROW	CONTACT CODE MOD. I				
		1	2	3	4	5
85851-X01 SEE NOTE 11 LEAD FREE OPTION	D	12	25	23	23	25
	C	12	25	23	23	25
	B	12	25	23	23	25
	A	12	25	23	23	25

METRAL P/N	ROW	CONTACT CODE MOD. I				
		1	2	3	4	5
85851-X07 SEE NOTE 11 LEAD FREE OPTION	D	59	59	59	59	59
	C	60	60	60	60	60
	B	60	60	60	60	60
	A	61	61	61	61	61

METRAL P/N	ROW	CONTACT CODE MOD. I				
		1	2	3	4	5
85851-X13 SEE NOTE 11 LEAD FREE OPTION	D	26	23	25	23	12
	C	23	23	25	23	12
	B	24	23	25	23	12
	A	23	23	25	23	12

METRAL P/N	ROW	CONTACT CODE MOD. I				
		1	2	3	4	5
85851-X18 SEE NOTE 11 LEAD FREE OPTION	D	19	2	2	2	2
	C	19	2	2	2	2
	B	19	2	2	2	2
	A	19	2	2	2	2

METRAL P/N	ROW	CONTACT CODE MOD. I				
		1	2	3	4	5
85851-X23 SEE NOTE 11 LEAD FREE OPTION	D	8	8	6	7	7
	C	8	8	6	7	7
	B	8	8	6	7	7
	A	8	8	6	7	7

METRAL P/N	ROW	CONTACT CODE MOD. I				
		1	2	3	4	5
85851-X02 SEE NOTE 11 LEAD FREE OPTION	D	26	12	12	12	23
	C	23	12	12	12	23
	B	24	12	12	12	23
	A	24	12	12	12	23

METRAL P/N	ROW	CONTACT CODE MOD. I				
		1	2	3	4	5
85851-X08 SEE NOTE 11 LEAD FREE OPTION	D	4	4	4	4	4
	C	2	2	2	2	2
	B	2	2	2	2	2
	A	2	2	2	2	2

METRAL P/N	ROW	CONTACT CODE MOD. I				
		1	2	3	4	5
85851-X14 SEE NOTE 11 LEAD FREE OPTION	D	2	2	2	3	4
	C	2	2	2	3	4
	B	2	2	2	3	4
	A	2	2	2	3	4

METRAL P/N	ROW	CONTACT CODE MOD. I				
		1	2	3	4	5
85851-X19 SEE NOTE 11 LEAD FREE OPTION	D	1	1	1	1	1
	C	1	1	1	1	1
	B	3	1	1	3	1
	A	1	1	1	1	1

METRAL P/N	ROW	CONTACT CODE MOD. I				
		1	2	3	4	5
85851-X24 SEE NOTE 11 LEAD FREE OPTION	D	4	4	4	2	2
	C	2	2	2	2	2
	B	2	2	2	2	2
	A	4	4	4	2	2

METRAL P/N	ROW	CONTACT CODE MOD. I				
		1	2	3	4	5
85851-X03 SEE NOTE 11 LEAD FREE OPTION	D	1	1	1	1	1
	C	2	2	2	2	2
	B	2	2	2	2	2
	A	2	2	2	2	2

METRAL P/N	ROW	CONTACT CODE MOD. I				
		1	2	3	4	5
85851-X09 SEE NOTE 11 LEAD FREE OPTION	D	40	40	40	40	41
	C	40	40	40	40	40
	B	40	40	40	40	40
	A	40	40	40	40	40

METRAL P/N	ROW	CONTACT CODE MOD. I				
		1	2	3	4	5
85851-X15 SEE NOTE 11 LEAD FREE OPTION	D	1	1	1	1	1
	C	1	1	1	1	1
	B	1	1	1	3	3
	A	1	1	1	1	1

METRAL P/N	ROW	CONTACT CODE MOD. I				
		1	2	3	4	5
85851-X20 SEE NOTE 11 LEAD FREE OPTION	D	4	3	4	2	2
	C	4	3	4	2	2
	B	4	3	4	2	2
	A	4	3	4	2	2

METRAL P/N	ROW	CONTACT CODE MOD. I				
		1	2	3	4	5
85851-X25 SEE NOTE 11 LEAD FREE OPTION	D	2	2	2	4	2
	C	2	2	2	2	2
	B	2	2	2	2	2
	A	2	2	2	4	2

METRAL P/N	ROW	CONTACT CODE MOD. I				
		1	2	3	4	5
85851-X04 SEE NOTE 11 LEAD FREE OPTION	D	19	19	19	-	-
	C	19	19	19	-	-
	B	19	19	19	-	19
	A	19	19	19	-	19

METRAL P/N	ROW	CONTACT CODE MOD. I				
		1	2	3	4	5
85851-X10 SEE NOTE 11 LEAD FREE OPTION	D	61	61	61	61	61
	C	20	20	61	61	61
	B	61	61	61	61	61
	A	61	61	61	61	61

METRAL P/N	ROW	CONTACT CODE MOD. I				
		1	2	3	4	5
85851-X16 SEE NOTE 11 LEAD FREE OPTION	D	6	6	6	5	6
	C	6	6	6	8	6
	B	6	6	6	6	6
	A	6	6	6	6	6

METRAL P/N	ROW	CONTACT CODE MOD. I				
		1	2	3	4	5
85851-X21 SEE NOTE 11 LEAD FREE OPTION	D	3	3	3	3	3
	C	3	3	3	3	3
	B	3	3	3	3	3
	A	1	3	3	3	3

METRAL P/N	ROW	CONTACT CODE MOD. I				
		1	2	3	4	5
85851-X26 SEE NOTE 11 LEAD FREE OPTION	D	3	3	4	4	2
	C	3	3	4	4	2
	B	3	3	4	4	2
	A	3	3	4	4	2

METRAL P/N	ROW	CONTACT CODE MOD. I				
		1	2	3	4	5
85851-X05 SEE NOTE 11 LEAD FREE OPTION	D	4	1	4	1	1
	C	4	1	1	1	1
	B	4	1	1	1	1
	A	4	1	4	1	1

METRAL P/N	ROW	CONTACT CODE MOD. I				
		1	2	3	4	5
85851-X11 SEE NOTE 11 LEAD FREE OPTION	D	61	61	61	61	61
	C	61	61	61	61	61
	B	61	61	61	61	61
	A	61	61	61	20	20

METRAL P/N	ROW	CONTACT CODE MOD. I				
		1	2	3	4	5
85851-X17 SEE NOTE 11 LEAD FREE OPTION	D	20	6	6	6	6
	C	20	6	6	6	6
	B	20	6	6	6	6
	A	20	6	6	6	6

METRAL P/N	ROW	CONTACT CODE MOD. I				
		1	2	3	4	5
85851-X22 SEE NOTE 11 LEAD FREE OPTION	D	4	4	2	3	2
	C	4	4	2	3	2
	B	4	4	2	3	2
	A	4	4	2	3	2

METRAL P/N	ROW	CONTACT CODE MOD. I				
		1	2	3	4	5
85851-X27 SEE NOTE 11 LEAD FREE OPTION	D	7	7	6	8	8
	C	7	7	6	8	8
	B	7	7	6	8	8
	A	7	7	6	8	8

METRAL P/N	ROW	CONTACT CODE MOD. I				
		1	2	3	4	5
85851-X06 SEE NOTE 11 LEAD FREE OPTION	D	59	59	59	59	59
	C	60	60	60	60	60
	B	60	60	60	60	60
	A	60	60	60	60	60

METRAL P/N	ROW	CONTACT CODE MOD. I				
		1	2	3	4	5
85851-X12 SEE NOTE 11 LEAD FREE OPTION	D	61	61	61	61	20
	C	61	61	61	61	61
	B	61	61	61	61	61
	A	61	61	61	61	61

mat'l code		--		tolerances unless otherwise specified		CUSTOMER		FCI		www.fciconnect.com	
ltr	ecn no.	dr	date	linear	0.X ±0.3	projection	COPY	title			
AC					0.XX ±0.13			METRAL SIGNAL HEADER			
				angles	.XXX ±.051			I MOD, 4 ROW PRESS-FIT			
				dr	0° ±2°			product family		METRAL	
				enrg	T.BRUNGARD 11/19/99			size	dwg no		213
				chr	M.STRAWSER 11/19/99			A	85851		sheet
				appd	M.STRAWSER 02/29/00						3
sheet index	revision sheet										

METRAL P/N	ROW	CONTACT CODE MOD. I					
		1	2	3	4	5	6
85851-X28 SEE NOTE 11 LEAD FREE OPTION	D	1	1	20	5	5	5
	C	1	1	20	5	5	5
	B	1	1	20	5	5	5
	A	1	1	20	5	5	5

METRAL P/N	ROW	CONTACT CODE MOD. I					
		1	2	3	4	5	6
85851-X29 SEE NOTE 11 LEAD FREE OPTION	D	3	3	4	4	3	3
	C	3	3	3	3	1	3
	B	3	3	3	3	3	3
	A	13	13	13	13	13	13

METRAL P/N	ROW	CONTACT CODE MOD. I					
		1	2	3	4	5	6
85851-X30 SEE NOTE 11 LEAD FREE OPTION	D	1	1	3	1	1	1
	C	1	1	3	1	1	1
	B	1	1	1	1	1	3
	A	1	1	1	1	1	3

METRAL P/N	ROW	CONTACT CODE MOD. I					
		1	2	3	4	5	6
85851-X31 SEE NOTE 11 LEAD FREE OPTION	D	2	2	19	2	19	2
	C	2	2	19	2	19	2
	B	2	1	19	2	19	2
	A	2	2	19	2	19	2

NOTES:

- FOR DIM A AND B SEE SHEET 2 AND UP.
- BODY MATERIAL: LIQUID CRYSTAL
POLYMER 30 % GLASS.
FLAME RETARDANT ACC. UL 94-V0.
- PIN MATERIAL:
PHOSPHOR BRONZE.
- PLATING ON PRESS-FIT TAIL:
85851 -XXX IS SnPb
85851 -XXYLF IS SN (LEAD FREE)
PLATING ON CONTACT AREA CONFORMS TO PERFORMANCE LEVEL SHOWN IN TABLE.
- PRODUCT MARKING:
PART NUMBER DESIGNATION & BATCH I.D.
- ALL PRODUCTS WITH PART NUMBERS SHOWN IN SUBSEQUENT TABLES WILL BE PACKAGED IN TUBES. IF TRAY PACKAGING IS REQUIRED, A SUFFIX "P" WILL BE ADDED TO THE END OF THE PART NUMBER. EXAMPLE: XXXXX-XXXP OR XXXXX-XXXPLF
- PRODUCT SPECIFICATION GS-12-180
APPLICATION SPECIFICATION BUS-20-073
- AFTER INSERTION INTO CIRCUIT BOARD WITH QUALIFIED TOOL.
- A PLATING HAS Au FLASH IN PRESS FIT AREA (LEAD FREE).
- THE PRODUCTS WHERE THE PART NUMBER ENDS IN LF MEET THE EUROPEAN UNION DIRECTIVES AND OTHER COUNTRY REGULATIONS AS DESCRIBED IN GS-22-008.
- FOR LEAD FREE PART NUMBERS, ADD AN "LF" SUFFIX. EXAMPLE: 85851-X01LF
- ALL PRODUCTS EXCEPT THOSE WITH PART NUMBERS CONTAINING (DRAWING NO.)-N1--- OR (DRAWING NO.)-N5---WILL WITHSTAND EXPOSURE TO 260°C FOR 60 SECONDS IN A CONVECTION, INFRA-RED OR VAPOR PHASE REFLOW OVEN. PART NUMBERS (DRAWING NO.)-N1--- AND (DRAWINGS NO.)-N5---WILL NOT WITHSTAND REFLOW AND Au CONTACT SURFACE OF THE CONTACTS SHALL BE EXPOSED TO A MAXIMUM 140°C FOR NO LONGER THAN 15 SECONDS IN A WAVE SOLDER APPLICATION.



This document is the property of and embodies CONFIDENTIAL and PROPRIETARY information of FCI. No part of the information shown on this document may be used in any way or disclosed to others without the written consent of FCI. Copyright FCI.

mat'l code		--		tolerances unless otherwise specified		CUSTOMER		FCI		www.fciconnect.com		
ltr	ecr no.	dr	date	linear	0.X ±0.3		COPY		title METRAL SIGNAL HEADER I MOD, 4 ROW PRESS-FIT			
AC					0.XX ±0.13		projection					
				angles	.XXX ±.051				product family METRAL code 213			
					0° ±2°							
				dr	T.BRUNGARD	11/19/99	MIM		size		dwg no 85851	
				enr	M.STRAWSER	11/19/99						
				chr	M.STRAWSER	11/19/99	scale 1:1		A		sheet 4	
				appd	M.STRAWSER	02/29/00						
sheet index	revision sheet											