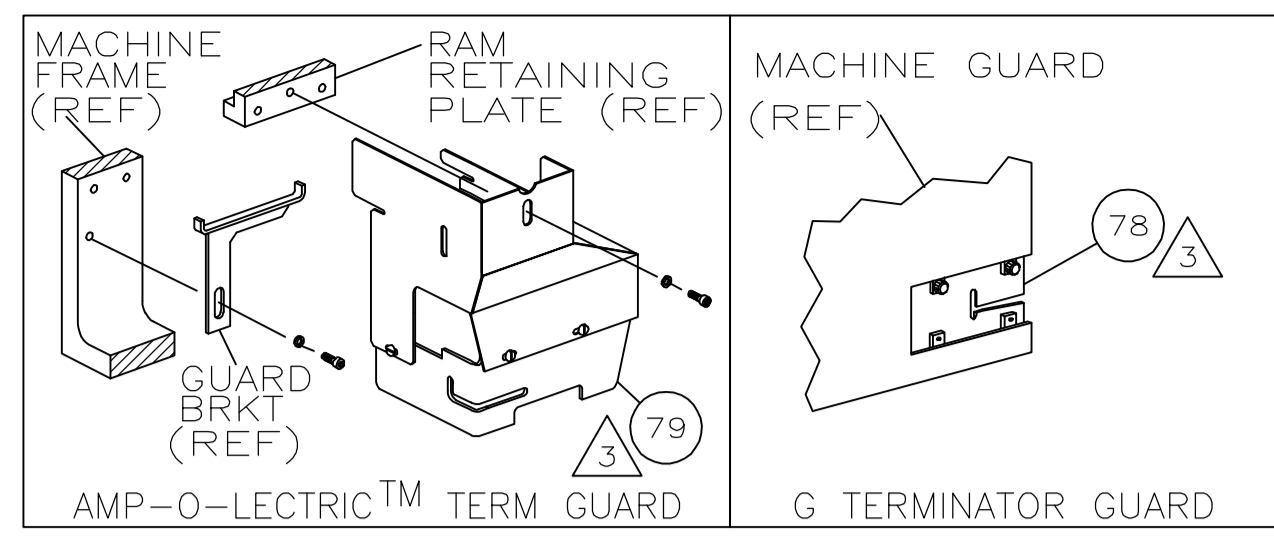


THIS DRAWING IS UNPUBLISHED. RELEASED FOR PUBLICATION.  
 © COPYRIGHT BY TYCO ELECTRONICS CORPORATION. ALL RIGHTS RESERVED.

PART NUMBER	REV	FIRST USED
1385156-1	B	122500-1
1385156-2	B	565435-5

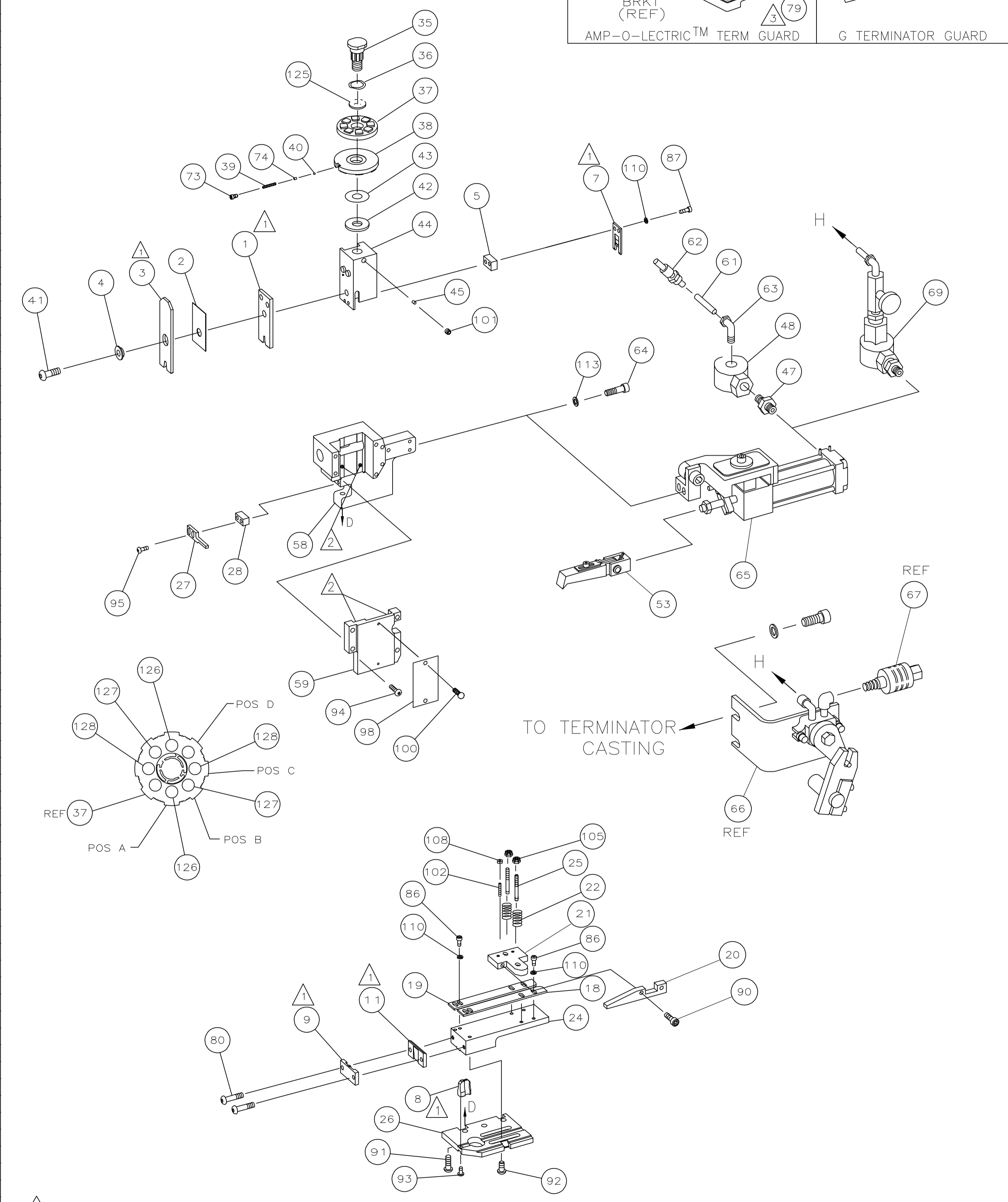


TERMINAL NAME: TERMINAL, SOCKET

AMP P/N	MFG P/N	CRIMP DATA (NON-AMP TERMINAL-AMP SPEC)			
286864	3744				
		PAD LTR CRIMP HEIGHT WIRE SIZE			
		A .073 ±.002 [1.85 ±0.05mm] 18			
		B .070 ±.002 [1.78 ±0.05mm] 20			
		C .065 ±.002 [1.65 ±0.05mm] 22			
		D NOT USED			
		CRIMP SIZE TYPE RANGE			
		WIRE .100 [2.54mm] F 18-22			
		INSUL .125 [3.18mm] F .079			
WIRE STRIP LENGTH	TERM APPL SPEC	FEED	APPL INSTRUCTION	SET UP GAGE	LAYOUT
.159-.190	NONE	.686	408-8039	458638-1	L2359

LOC	DIST	REVISIONS			
A	66	REV	DESCRIPTION	DATE	BY
		B	ECR-07-005415	3-2007	MY

REV	DESCRIPTION	DATE	BY
-1	LEADMAKER & BENCH MODEL G		AIR FEED
-2	BENCH MODEL K		AIR FEED



QTY	REV	DESCRIPTION	ITEM NO
2	2	9-354778-1 PIN, WIRE DISC (.2950)C	129
2	2	8-354778-1 PIN, WIRE DISC (.2900)B	127
2	2	7-354778-5 PIN, WIRE DISC (.2870)A	126
1	1	986950-1 WASHER, FLAT PRECISION	125
1	1	217238-1 GENERAL INSTRUCTION PACKAGE	124
1	1	4088039 EF APPL INST 408-8039	123
			122
			121
			120
			119
			118
			117
			116
			115
			114
2	2	21024-5 WASHER, LOCK(#10)AIR ASSY	113
			112
			111
4	4	21024-4 WASHER, LOCK(NO.8)SHEAR BL	110
			109
2	2	21018-4 NUT, HEX(4-40)DRAG	108
			107
			106
2	2	21022-2 NUT, HEX SL(8-32)DRAG STUD	105
			104
			103
2	2	2-21006-6 SCR, SKT SET(4-40x.62)DRAG	102
1	1	21009-2 SCR, SKT SET(1/4-20x.25 )RAM	101
2	2	21017-2 SCR, DRIVE(#2x.19)ID PLATE	100
			99
1	1	461264-1 PLATE, IDENTIFICATION	98
			97
			96
2	2	2-21002-2 SCR, BHC(8-32x.50)STRIPPER	95
4	4	2-21002-9 SCR, BHC(10-32x.75)CAP	94
1	1	22733-8 SCR, BHC(8-32x.38 LW)ANVIL	93
4	4	3-21002-3 SCR, BHC(1/4-20x.50)ST GD PL	92
3	3	2-22733-8 SCR, BHC(1/4-20x.62)HSG	91
2	2	1-21000-3 SCR, SHC(4-40x.25)	90
			89
			88
2	2	2-21000-8 SCR, SHC(8-32x.62)SLUG BLADE	87
4	4	2021000-6 SCR, SHC(8-32x.38)STRIP GUIDE	86
2	2	2-21000-8 SCR, BHC(8-32x.63)R STRIP GUIDE	85
			84
			83
			82
			81
2	2	2-21002-8 SCR, BHC(10-32x.63)SHEAR PL	80
1	-	455750-8 GUARD ASSY	79
-	REF	679532-1 INSERT, GUARD	78
			77
			76
			75
1	1	690603-1 SPRING, ASSIST	74
1	1	23030-1 SCR, SKT CAP(6-32x.25)CP DSC	73
			72
			71
-2	-1	U/M	

REV	DESCRIPTION	DATE	BY
4	1	692655-5	AIR FEED VALVE ASSY
			69
			68
			67
4	REF	24042-2	VALVE, SHUT OFF
			66
			65
			64
			63
			62
			61
			60
			59
			58
			57
			56
			55
			54
4	1	460680-2	FEED FINGER ASSY
			53
			52
			51
			50
			49
			48
			47
			46
			45
			44
			43
			42
			41
			40
			39
			38
			37
			36
			35
			34
			33
			32
			31
			30
			29
			28
			27
			26
			25
			24
			23
			22
			21
			20
			19
			18
			17
			16
			15
			14
			13
			12
1	1	240644-1	PLATE, REAR SHEAR
			11
			10
1	1	690482-6	PLATE, FRONT SHEAR
			9
1	1	8-461295-0	ANVIL
			8
1	1	690474-6	BLADE, SLUG
			7
			6
			5
			4
			3
			2
			1
-2	-1	U/M	

- 1 RECOMMENDED SPARE PARTS.
- 2 GREASE LIGHTLY.
- 3 GUARD MUST BE IN PLACE WHEN OPERATING APPLICATOR IN A BENCH MACHINE.
- 4 SEE DRAWING FOR COMPONENTS
- 5 ITEM 78 USED WITH G TERMINATOR ONLY.

QTY REQD PER ASSY	PARTS LIST

QTY REQD PER ASSY	PARTS LIST

THIS DRAWING IS A CONTROLLED DOCUMENT.

DIMENSIONS: INCHES	TOLERANCES UNLESS OTHERWISE SPECIFIED:	DRAWING NO	RESTRICTED TO
0 PLC ± .005	1 PLC ± .002	A1	
1 PLC ± .002	2 PLC ± .001	00779	
2 PLC ± .001	3 PLC ± .0005	1385156	
3 PLC ± .0005	4 PLC ± .0002		
4 PLC ± .0002	ANGLES ± .005		
MATERIAL	FINISH	WEIGHT	SCALE

CUSTOMER DRAWING