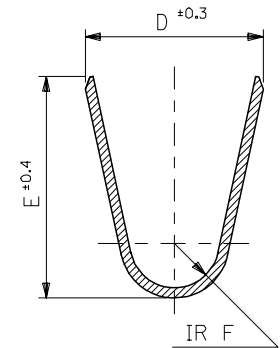
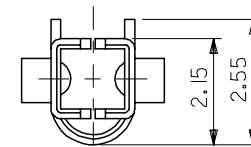


SECT. G-G



SECT. H-H



黄銅 BRASS (t=0.203)	部分金メッキ: 0.76 μm MIN. SELECTIVE GOLD: 0.76 μm MIN.	0.6	2.3	2.3	0.4	1.65	1.8	∅ 0.9-1.8	#22-28	39-00-0086	5556 GS2L	バラ状 LOOSE
	部分半田メッキ: 2 μm MIN. SELECTIVE TIN-LEAD: 2 μm MIN. ニッケルメッキ (下地): 1.27 μm MIN. NICKEL: 1.27 μm MIN.	0.9	4.5	3.6	0.5	2.3	1.9	∅ 1.3-3.1	#18-24	-0085 -0056	GS2 GSL	連鎖状 CHAIN LOOSE
MATERIAL	メッキ・FINISH	F	E	D	C	B	A	被覆外形 INS. RANGE	適用電線 WIRE RANGE	EDP NO.	ENG. NO.	端子形状 FORM

注記
NOTES.

- 適合ハウジング : 5557 シリーズ
APPLICABLE HOUSING : 5557 SERIES.
 - 嵌合相手 : 5558, 5566, 5569 シリーズ
MATES WITH TERMINAL : 5558, 5566, 5569 SERIES.
- △ 適用電線が #22-28 の製品のセレーション数は 1 とする。
THE NUMBER OF SERRATIONS TO BE ONE FOR WIRE RANGE #22-28.

REVISED EC NO: J2005-1103 DRAWN:MIMEDA 2004/10/20 CHKD:KTOYODA 2004/10/20 APP:R.NUKITA 2004/10/22	GENERAL TOLERANCES (UNLESS SPECIFIED)		DIMENSION STYLE MM ONLY		SCALE 10:1	DESIGN UNITS METRIC	THIRD ANGLE PROJECTION
	10 UNDER	±0.2	DRAWN BY H.HIRAMO		DATE 1991/05/18		
	10 OVER 30 UNDER	±0.25	CHECKED BY M.FUKUSI		DATE 1998/11/09		
	30 OVER	±0.3	APPROVED BY M.ENOMOT		DATE 1998/11/09		
ANGULAR ±3 °		DRAFT WHERE APPLICABLE MUST REMAIN WITHIN DIMENSIONS		MATERIAL NO. SEE CHART		DOCUMENT NO. SD-5556GS**	SHEET NO. 1 OF 1
SIZE A3 THIS DRAWING CONTAINS INFORMATION THAT IS PROPRIETARY TO MOLEX INCORPORATED AND SHOULD NOT BE USED WITHOUT WRITTEN PERMISSION							