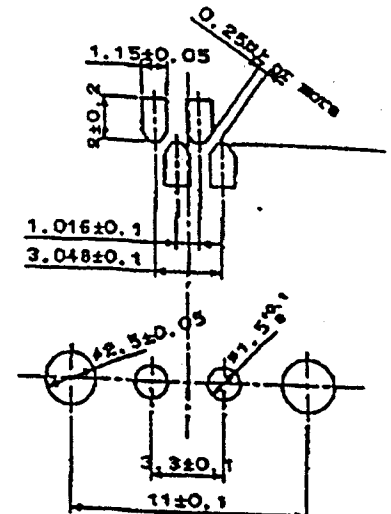
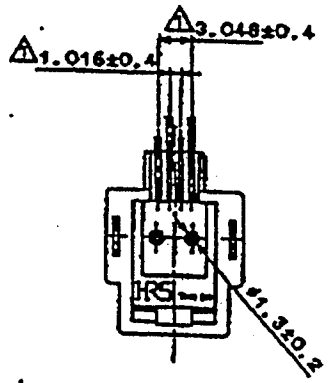
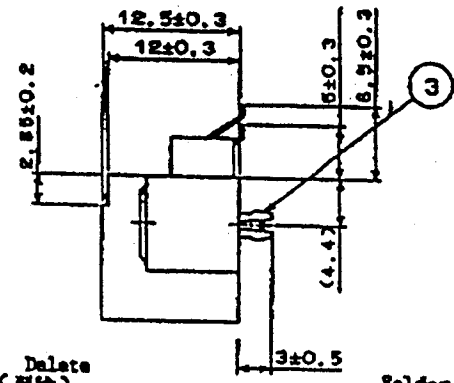
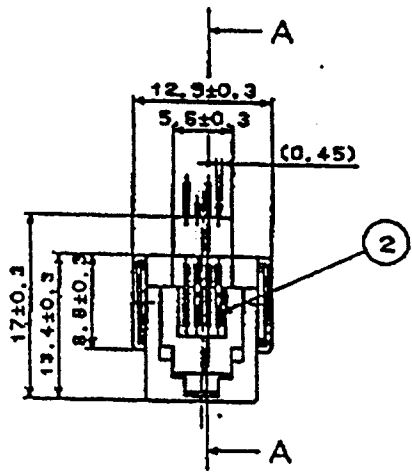
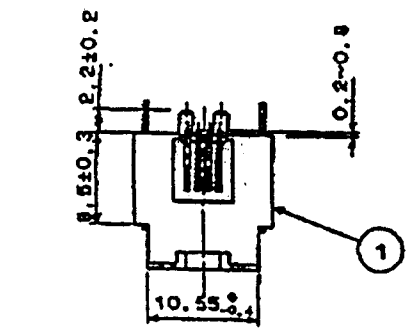


NO.	訂正記号	訂正者	年月日	訂正記号	訂正者
NO.	DESCRIPTION OF REVISIONS	BY	DATE	DESCRIPTION OF REVISIONS	BY
3	RE-E-1606	坂野 芳雄			



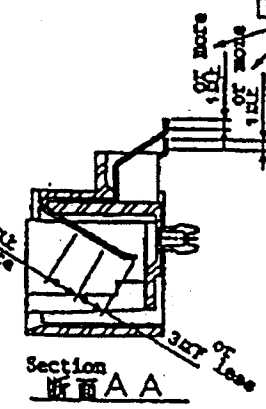
PCB Layout (Connector side)
 基板取付寸法図(コネクタ側)
 (適合基板厚 t = 1.6)
 (Applicable PCB Thickness t =)

Notes
 ① 金めっき及びはんだめっき部以外のニッケルめっきとする。
 Nickel plating on areas that are either gold or solder plated.

Delete (削除)

③ Solder plated area
 はんだめっき部

① Gold plated area
 金めっき部



Section
 断面 A-A

- 3 Copper Alloy, Solder plating.
- 2 Phosphor bronze Contact area: Gold 1.27 micron meter
PCB area: Solder 3 micron meter
- 1 PPS resin, Black color

御参考図

2	9人青銅	①	PPS樹脂	③	銅合金
1	PPS樹脂		色: 黒		はんだめ
部番 No.	材質	処理, 備考	部番 No.	材質	処理
		FINISH, REMARKS		MATERIAL	FINISH
一般公差 GENERAL DIMENSION TOLERANCE		図面記号 CODE No. (OLD)	製図 DRAWN	検査 CHECKED	受検 REVIEWED
寸法区分 OVER TO	公差 TOLERANCE		技 2.2.5 電考	技 2.2.5 電考	技 2.2.5 電考
6	±0.3				
8	1/2 ±0.5				
18	50 ±0.7				
50	125 ±1				
125	250 ±1.3				
250	500 ±2				
角度 ANGULAR ±1°					
承認 Preliminary drawing DRAWING NO. 00000000000000000000			図番 DRAWING No. ADC3-454		
HRS ヒロセ電機株式会社 HIROSE ELECTRIC CO., LTD.			図番 PART No. TM15R-44		
縮尺 SCALE mm 2:1			部品コード CODE No. CL222-2506		

Δ	Δ	REVISION	BY	CHKD	DATE	Δ	Δ	REVISION	BY	CHKD	DATE
Δ											
Δ											

APPLICABLE STANDARD											
RATING	VOLTAGE	CONTACT NO.	AC	DC	APPLICABLE CABLES						
	CURRENT	CONTACT NO.			IMPEDANCE FREQUENCY RANGE	Ω (0 ~ Hz)					
	POWER				OPERATING TEMPERATURE RANGE	-25 °C ~ 60 °C					
	SPECIALITY										

SPECIFICATIONS

NO.	ITEM	CONDITIONS	TEST STANDARD	MIN	MAX	UNITS	QT	AT
1	DESIGN-MATERIAL-FINISH			-	-	-	○	○
2	MARKING	Applicable Std. and ^{ADC} 3-45426 _{DC}		-	-	-		
3	INSULATION RESISTANCE	Must be over standard value at DC. 100V		100	-	MΩ		
4	CONTACT RESISTANCE CONTACT	The voltage drop must be under the Std. value at DC 100 mA		-	200	mΩ		
	CONTACT	The voltage drop must be under the Std. value at DC A		-		mΩ		
5	DIELECTRIC WITHSTANDING VOLTAGE	Must keep the AC 30 500 V for one minute.		-	-	-		
6	VSWR	The must be under the Std value at frequency ~ Hz		-	-	-		
7	INSERTION LOSS	The must be under the std value at frequency ~ Hz		-	-	dB		
8	LOW LEVEL CIRCUIT	The Contact Resistance must be under the Std. value at DC 20mV loss and mA.		-	-	mΩ		
9	CONTACT ENGAGEMENT AND SEPARATION FORCES	Must be suitable for the Std. value. at sizing gauge.				gf		
	MATING AND UNMATING FORCES	Must be suitable for the Std. value.				kgf		
10	HUMIDITY	Insulation resistance must be over the Std. value at 40 °C 90 ~ 95 % 500H	at high humidity	JIS C5402	1	-	MΩ	-
			at. hi humidity	PARA 7.3	10	-	MΩ	-
11	VIBRATION	Must have no damage, crack and looseness of parts. at frequency range 0 ~ 5 Hz, Total amplitude 1.5 mm, G at 2 hours for 3 directions.	JIS C5402 PARA 6.1	-	-	-		
12	SHOCK	Must have no damage, crack and looseness of parts. 50G at 3 times for 3 directions.	JIS C5402 PARA 6.2	-	-	-		
13	TEMPERATURE CYCLING	Must have no damage, crack and looseness of parts. -55 ~ 85 °C 5 cycles. hours	JIS C5402 PARA 7.2 con. (D)	-	-	-		
14	DURABILITY CONTACT	Must be less than the Std. value after 200 times insertion and extraction at the condition described in above item No. 4.		-	220	mΩ		
				-		mΩ		
5	SALT SPRAY (CORROSION)	Must not have heavy corrosion after 5 % salt water spray. 48 hours.	JIS C5402 PARA 7.1	-	-	-		
6	WATER PRESSURE WITHSTANDING	No leakage at depth = kgf/cm ² hours		-	-	-		
7	AIR PRESSURE WITHSTANDING	No leakage at pressure kgf/cm ² min		-	-	-		

REMARKS REFLUX RESISTANCE: MUST HAVE NO ABNORMALITY WHEN PUT IN THE HEAT OF 240°C FOR 3 SECONDS.

APPROVED		ISSUED BY	HRS ELECTRIC CO., LTD
REVIEWED			
CHECKED			
DESIGNED			

DRAWN: _____ PART NO. TH15R-44

AWING NO. CA 45426- specification sheet CODE NO. Q.222-2506-4