



CY3280-CPM1 CapSense[®] Plus Module Development Kit Quick Start Guide

Doc. # 001-51974 Rev. *A

Cypress Semiconductor
198 Champion Court
San Jose, CA 95134-1709
Phone (USA): 800.858.1810
Phone (Intl): 408.943.2600
<http://www.cypress.com>

1. Kit Contents

Each CY3280-CPM1 CapSense® Plus Module Development Kit contains:

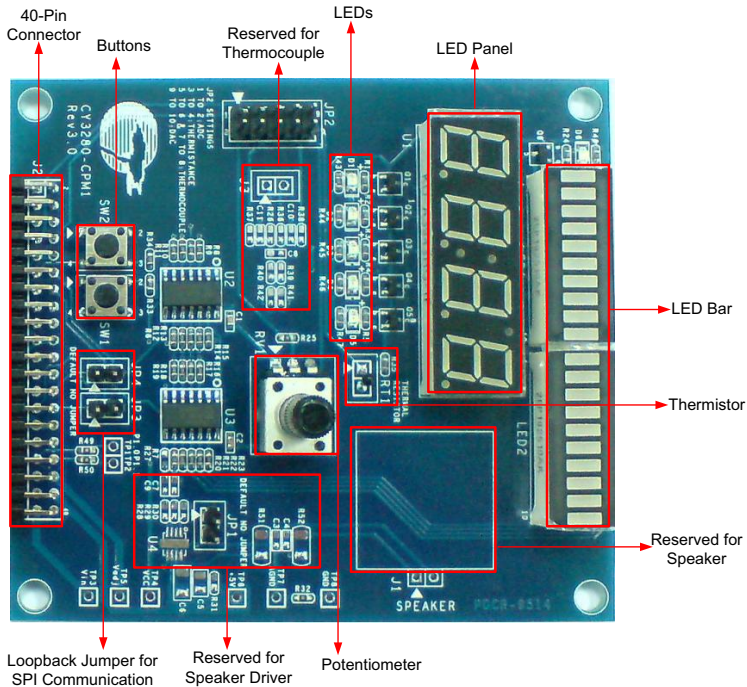
- CY3280-CPM1 CapSense Plus Module Board
- CY3280-CPM1 Kit CD
- Quick Start Guide

Universal CapSense Module boards are available for purchase separately. For more information, visit <http://www.cypress.com/shop>.

Prerequisites:

- CY3280-22x45/CY3280-28xxx Universal CapSense Controller Board
- PSoC MiniProg
- USB Mini-B Cable

2. Module Hardware



The module board consists of an LED panel, a potentiometer, an LED bar, six LEDs, a thermistor, and two buttons. These are interfaced to the CapSense Controller board via a 40-pin receptacle connector (J2). The board also consists of two loop-back connection jumpers (JP3 and JP4) to demonstrate the variable length SPI master-slave communication.

3. Getting Started

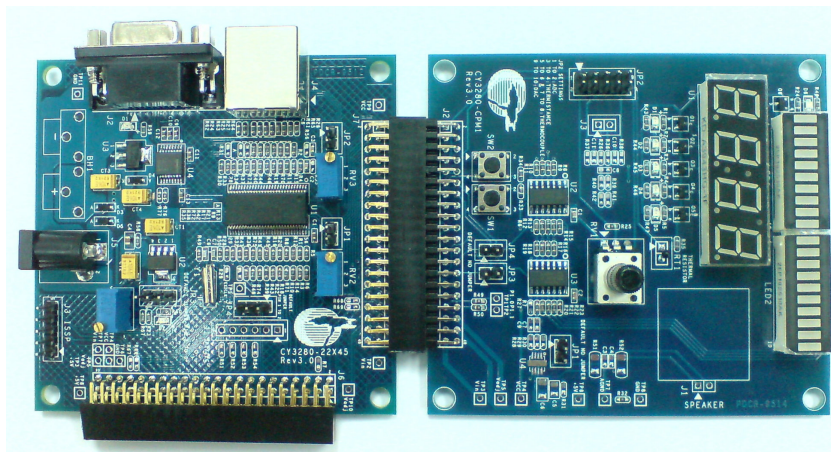
CY3280-CPM1 kit can be connected to the CY3280-22x45 or CY3280-28xxx Universal CapSense Controller boards. Insert the kit CD into the CD/DVD drive of your PC and follow the instructions to complete the installation.

4. Board Setup

This section uses one example firmware to demonstrate the setup of CY3280-CPM1 with CY3280-20x45 Universal CapSense Controller board. Similar procedure is followed for the CY3280-28xxx board. Refer to the CY3280-CPM1 kit guide for more examples.

4.1 Real Time Clock (RTC) Setup

1. Connect the CY3280-CPM1 board to the CY3280-22x45 Universal CapSense Controller board's P2 receptacle connector.



2. Connect your PC to the CY3280-22x45 Universal CapSense Controller board's ISSP connector (J3) using a PSoC MiniProg and an USB cable.

3. Program the RTC lab hex file to the CY3280-22x45 board. Refer to the quick start guide of CY3280-22x45 UCC board for detailed program procedure.
4. Unplug the MiniProg from the CY3280-22x45 board.
5. Disconnect JP3 and JP4 of CY3280-CPM1 board.
6. Power the CY3280-22x45 board.

5. Test the Board

The elapsed time is displayed on the LED panel in real time. You can also test the board with the other code examples available on the CD.

6. Design Support and Resources

A wealth of information about PSoC Designer™ and CapSense are available on www.cypress.com. For knowledge base articles, customer forums, and online application support, visit www.cypress.com/support.

©2009-2011 Cypress Semiconductor Corporation. PSoC and CapSense are registered trademarks of Cypress Semiconductor Corp. All other trademarks or registered trademarks referenced herein are property of the respective corporations.



Cypress Semiconductor Corporation
198 Champion Ct., San Jose, CA 95134 USA
www.cypress.com



If you have questions, call
Cypress Customer Support
+1 (800) 541-4736 Ext. 8 (in the USA),
+1 (408) 943-2600 Ext. 8 (International),
or visit www.cypress.com/go/support
Doc. # 001-51974 Rev. *A