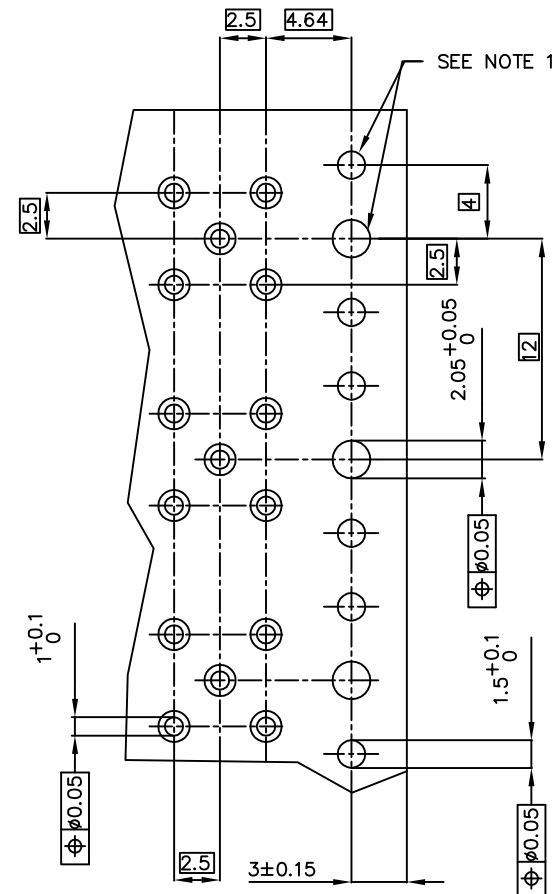
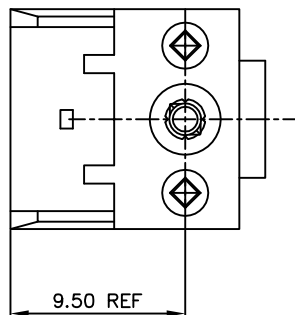
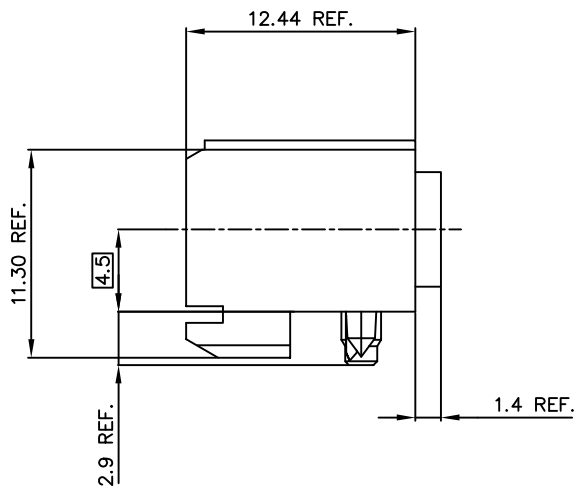
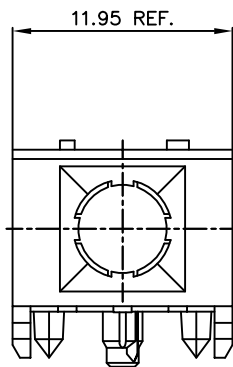


PRODUCT #	PCB THICKNES
89092-101LF	1.6 & 2.4



RECOMMENDED HOLE PATTERN,  
COMPONENT SIDE.

PRODUCT AFTER PC BOARD APPLICATION.

PC BOARD THICKNESS  $\pm 0.20$   
SEE TABLE

NOTES:

- INDICATED HOLES ARE UNPLATED.
- MATERIAL: LIQUID CRYSTAL POLYMER 30% GLASS FLAME RETARDANT ACC. UL 94-00 COLOR NATURAL.
- THIS PRODUCT WITH "LF" SUFFIX MEETS EUROPEAN UNION DIRECTIVES AND OTHER COUNTRY REGULATIONS AS DESCRIBED IN GS -22-008.
- THE HOUSING WILL WITHSTAND EXPOSURE TO 260 DEGREE PEAK TEMPERATURE FOR 20 SECONDS IN WAVE SOLDER APPLICATION WITH A 1.6 MM MINIMUM THICK CIRCUIT BOARD.

mat'l. code SEE NOTE 2		tolerances unless otherwise specified		CUSTOMER COPY	ELECTRONICS www.fciconnect.com	
ltr	ecn no dr date	linear		projection	title	code
A	H40355 DDB 940616				RA FEMALE HSG	213
B	H50047 RVI 950119				HYBRID 12MM PRESS PEG	1 of 1
C	H90478 DDB 990816	angles		mm	product family	
D	p005-0383 CLU 051011	dr	H.Bouwknegt 931206	scale	size	dwg no
E	p005-0406 CLU 051027	eng	D.Andrews 950119	5:1	A2	89092
		chr	D.Andrews 950119			
		app	H.Coolijmans 950119			
sheet	revision					
1	E					

All rights reserved. Reproduction or use in other products is not permitted without written authority from the proprietor.  
 Tous droits réservés. Reproduction ou utilisation dans d'autres produits sans autorisation écrite du propriétaire.  
 Property of FCI Inc.  
 © FCI Inc.