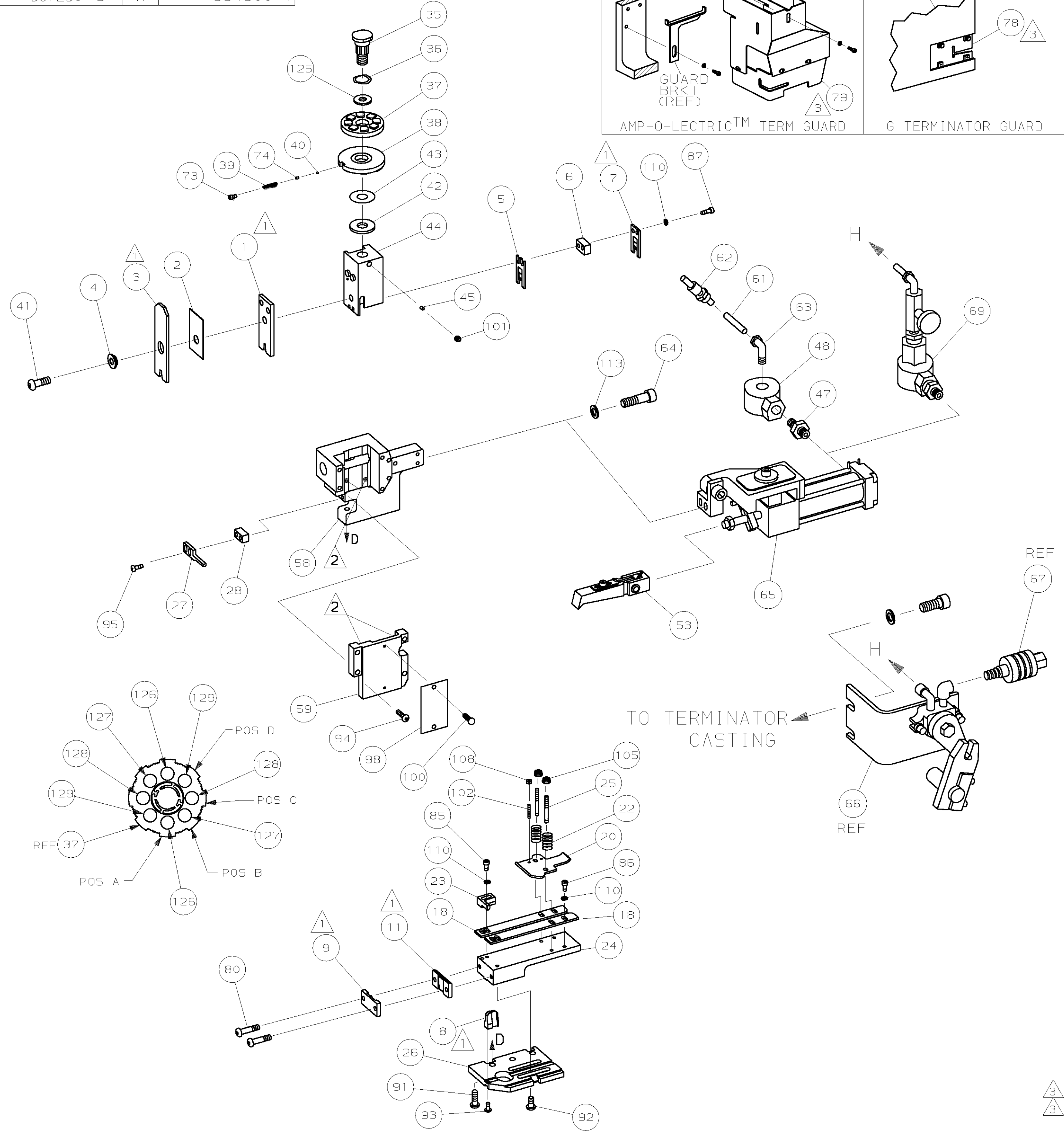
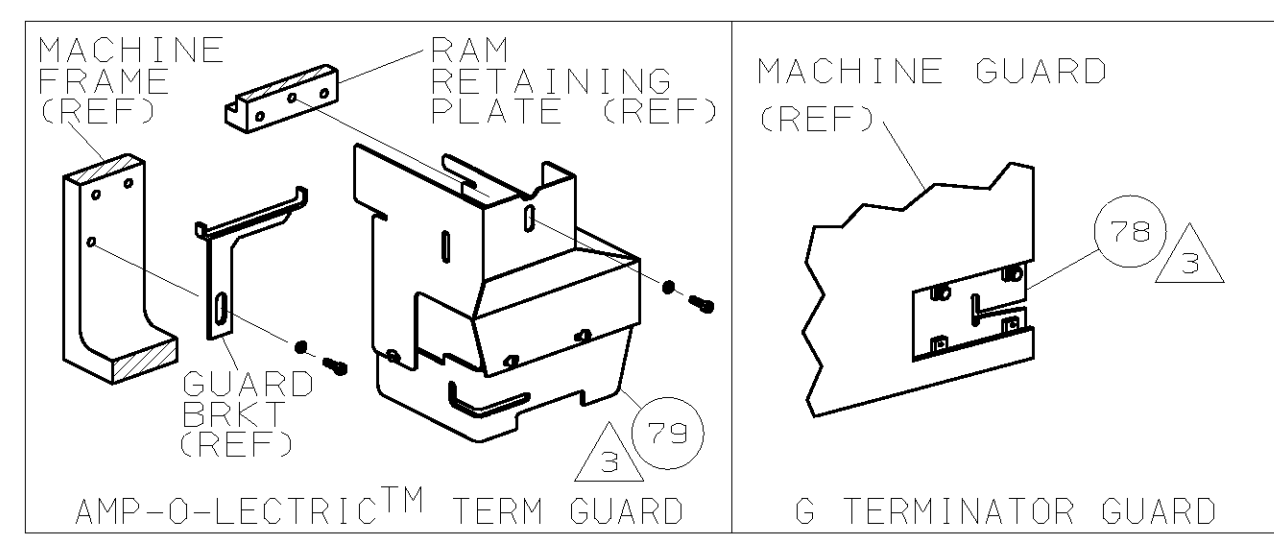


PART NUMBER	REV	FIRST USED
567250-1	H	565435-5
567250-3	K	354500-1

OBSOLETE



- 1 RECOMMENDED SPARE PARTS.
- 2 GREASE LIGHTLY.
- 3 GUARD MUST BE IN PLACE WHEN OPERATING APPLICATOR IN A BENCH MACHINE.
- 4 SEE DRAWING FOR COMPONENTS
- 5. DO NOT USE LUBRICANT ON TERMINAL STRIP.
- 6 FEED ON RECEPTACLE.

TERMINAL NAME: CLUSTER PIN RECPT		CRIMPING DATA	
PAD LTR	63455	CRIMP HEIGHT	WIRE SIZE
	1217173	A .091 ±.002 [2.31 ±0.05mm]	7400-8500 CMA
	1217672	B .086 ±.002 [2.18 ±0.05mm]	6300-7300 CMA
		C .081 ±.002 [2.06 ±0.05mm]	5100-6200 CMA
		D .076 ±.002 [1.93 ±0.05mm]	4000-5000 CMA
WIRE		CRIMP SIZE	TYPE
		.140 [3.56mm]	F
INSUL			RANGE
		.170 [4.32mm]	4000-8500 CMA
			.090-.170
WIRE STRIP LENGTH	TERM APPL SPEC	FEED	APPL INSTRUCTION
-	114-2019	.935	408-8039
			SET UP GAGE
			458638-1
			LAYOUT
			778-C

QTY	REQD	PER	ASSY	PARTS LIST	DESCRIPTION	ITEM NO	
2	-	2	-	C	6-354778-9	PIN, WIRE DISC (.2840)D	129
2	-	2	-	C	5-354778-9	PIN, WIRE DISC (.2790)C	128
2	-	2	-	C	4-354778-9	PIN, WIRE DISC (.2740)B	127
2	-	2	-	C	3-354778-9	PIN, WIRE DISC (.2690)A	126
1	-	-	-	A	986950-1	WASHER, FLAT PRECISION	125
							124
							123
							122
							121
							120
							119
							118
							117
							116
							115
							114
2	-	2	-	A	21024-5	WASHER, LOCK (#10) AIR ASSY	113
							112
							111
7	-	7	-	A	21024-4	WASHER, LOCK (NO.8) SHEAR BL	110
							109
2	-	2	-	A	21018-4	NUT, HEX (4-40) DRAG	108
							107
							106
2	-	2	-	A	21022-2	NUT, HEX 5L (8-32) DRAG STUD	105
							104
							103
2	-	2	-	A	2-21006-6	SCR, SKT SET (4-40x.62) DRAG	102
1	-	-	-	A	21009-2	SCR, SKT SET (1/4-20x.25) RAM	101
2	-	2	-	A	21017-2	SCR, DRIVE (#2x.19) ID PLATE	100
							99
1	-	-	-	B	461264-1	PLATE, IDENTIFICATION	98
							97
							96
2	-	2	-	A	2-21002-4	SCR, BHC (8-32x.75) STRIPPER	95
4	-	4	-	A	2-21002-9	SCR, BHC (10-32x.75) CAP	94
1	-	-	-	A	22733-8	SCR, BHC (8-32x.38 LW) ANVIL	93
4	-	4	-	A	3-21002-3	SCR, BHC (1/4-20x.50) ST 6D PL	92
3	-	3	-	A	2-22733-8	SCR, BHC (1/4-20x.62) H5G	91
							90
							89
							88
2	-	2	-	A	2-21000-7	SCR, SHC (8-32x.50) SLUG BLADE	87
3	-	3	-	A	2-21000-6	SCR, SHC (8-32x.38) STRIP GUIDE	86
2	-	2	-	A	2-21000-9	SCR, SHC (8-32x.75) STRIP GUIDE	85
							84
							83
							82
							81
2	-	2	-	A	3-21002-0	SCR, BHC (10-32x.88) SHEAR PL	80
-	-	-	-	A	455750-8	GUARD ASSY	79
REF	-	-	-	A	679532-1	INSERT, GUARD	78
							77
							76
							75
1	-	-	-	A	690603-1	SPRING, ASSIST	74
1	-	-	-	A	23030-1	SCR, SKT CAP (6-32x.25) CP DSC	73
							72
							71
-3	-	-1	U/M	DWG SIZE	PART NO	DESCRIPTION	ITEM NO

QTY	REQD	PER	ASSY	REVISION OF EACH ASSY NO (WHEN BLANK, USE DWG REVISION)	PARTS LIST	DESCRIPTION	ITEM NO	
-1	-	-	-	-	BENCH MODEL K	AIRFEED	OBSOLETE	
-	-	-	-	-	-	-	-	
-3	-	-	-	-	BENCH MODEL G	AIRFEED	-	
							70	
							69	
							68	
-	-	REF	-	A	24042-2	VALVE, SHUT OFF	67	
-	-	REF	-	C	692655-6	AIR FEED VALVE ASSY	66	
1	-	-	-	B	460277-1	AIR FEED ASSY	65	
2	-	2	-	A	3-21000-9	SCR, SHC 10-32x1.00 AIR ASSY	64	
1	-	-	-	A	983427-6	ELBOW, TUBING 1/8NPT - 1/4 T	63	
1	-	-	-	A	23238-1	QUICK DISCONNECT	62	
12.00	-	-	-	IN	A	27319-4	TUBING, POLY-FLO Ø.25	61
							60	
1	-	-	-	C	454220-1	CAP, RAM	59	
1	-	-	-	D	453736-1	HOUSING	58	
							57	
							56	
							55	
							54	
1	-	-	-	B	460680-2	FEED FINGER ASSY	53	
							52	
							51	
							50	
							49	
1	-	-	-	A	22374-7	VALVE, QUICK EXHAUST	48	
1	-	-	-	A	22304-1	NIPPLE, HEX 1/8 NPT	47	
							46	
1	-	-	-	A	690191-1	PLUG, NYLON	45	
1	-	-	-	C	455674-1	RAM	44	
1	-	-	-	A	690125-1	WASHER, LAMINATED	43	
1	-	-	-	A	690124-4	WASHER, RAM	42	
1	-	-	-	A	690686-1	BOLT, CRIMPER (5/16-24x1.00)	41	
1	-	-	-	A	23241-6	BALL, STEEL	40	
1	-	-	-	A	690170-1	SPRING, COMPRESSION	39	
1	-	-	-	C	690142-1	DISC, INSULATION	38	
1	-	-	-	D	354777-1	WIRE DISC, PLASTIC	37	
1	-	-	-	A	22480-5	WASHER, SPRING	36	
1	-	-	-	B	690212-1	POST, RAM	35	
							34	
							33	
							32	
							31	
							30	
							29	
1	-	-	-	B	690451-8	SPACER, STRIPPER	28	
1	-	-	-	A	240639-4	STRIPPER	27	
1	-	-	-	D	455676-1	PLATE, BASE	26	
2	-	2	-	A	22354-8	DRAG, STUD	25	
1	-	-	-	B	455678-1	PLATE, STRIP GUIDE	24	
1	-	-	-	C	240825-3	PLATE, STRIP HOLD DOWN	23	
2	-	2	-	A	4-22281-1	SPRING, DRAG	22	
							21	
1	-	-	-	A	454177-1	DRAG, STOCK	20	
-	-	-	-	B	-	-	19	
2	-	2	-	C	454204-4	GUIDE, STRIP (FRONT)	18	
							17	
							16	
							15	
							14	
							13	
							12	
1	-	-	-	B	240644-1	PLATE, REAR SHEAR	11	
							10	
1	-	-	-	B	690482-4	PLATE, FRONT SHEAR	9	
1	-	-	-	D	1-459866-3	ANVIL	8	
1	-	-	-	B	690474-4	BLADE, SLUG	7	
1	-	-	-	B	4-240641-3	SPACER, SLUG BLADE	6	
1	-	-	-	C	217573-1	TOOL, SIZING	5	
1	-	-	-	B	1-238009-4	SPACER, BLOCK CRIMPER	4	
1	-	-	-	C	5-456134-7	CRIMPER, INSULATION	3	
1	-	-	-	B	1-455888-5	SPACER, CRIMPER	2	
1	-	-	-	C	462808-7	CRIMPER, WIRE	1	
-3	-	-1	U/M	DWG SIZE	PART NO	DESCRIPTION	ITEM NO	

THIS DRAWING IS A CONTROLLED DOCUMENT.

THIS DRAWING IS UNRELEASED. RELEASE FOR PUBLICATION BY AMP INCORPORATED. ALL RIGHTS RESERVED. AMP 1756 REV 3-92

LOC A  
DIST 66

DIMENSIONS IN INCHES. DO NOT SCALE PRINT. TOLERANCES UNLESS OTHERWISE SPECIFIED: 2 PLC DEC ±.25 3 PLC DEC ±. 4 PLC DEC ±- ANGLES ±- SURF TEXTURE: REMOVE BURRS, BREAK SHARP EDGES R.015 MAX

MATL - HT TR - FIN -

DR 4/25/95 APP 5-30-95 T. BEDDICK  
L. COLLINS  
CHK 5-30-95 REL 5/31/95  
C. ERISMAN B. MORGAN

**AMP** AMP Incorporated Harrisburg, PA 17105-3608

NAME END FEED HDM APPLICATOR MACHINE REF MINI APPL  
SCALE - DWG NO 567250 SHEET 1 OF 1 REV K

00779 CUSTOMER AND ASSEMBLY DRAWING