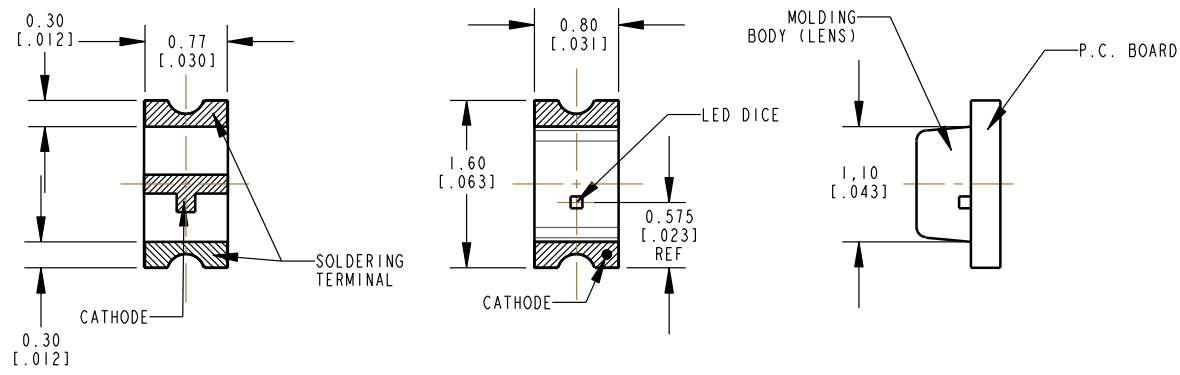


REV	ECN NO	REVISIONS	DRN	CKD	APP	DATE
A		NEW RELEASE	TWC			



- NOTES:
- EPOXY COLOR: WATER CLEAR.
 - DIE: InGaN BLUE
 - LEADS: Au (GOLD) PLATED, OVER Ni (NICKEL) ON Cu (COPPER ALLOY) ON A FR4 SUBSTRATE.
 - SOLDER ADHERANCE: BOTH LEADS PER MIL-STD-202E, METHOD 208C.
 - PART TAPED AND REELED PER EIA-RS-481-1.
 - PART SUPPLIED 3000 DEVICES PER 7" DIAMETER REEL, ONE REEL PER SEALED ALUMINUM BAG WITH DESICCANT.
 - LABELING FOR REEL AND OUTSIDE OF ALUMINUM FOIL BAG: DIALIGHT P/N, DATE CODE/ LOT NUMBER, INTENSITY BIN CODE/COLOR CODE, QTY/REEL AND COUNTRY OF ORIGIN.
 - THIS COMPONENT IS AN ELECTROSTATIC DISCHARGE SENSITIVE DEVICE (ESD). MAINTAIN ALL PRECAUTIONARY MEASURES DURING ASSEMBLY, HANDLING AND STORAGE IN ACCORDANCE WITH IPC-A-610.
 - DIALIGHT P/N: 597-3607-607F FULL REEL OR -602F 20 PIECE SAMPLE STRIP.
 - TAPE AND REEL LEDS MAY REQUIRE RE-TAPING AFTER TWELVE MONTHS.
 - THIS PRODUCT IS Pb FREE. IT IS IN COMPLIANCE WITH THE EUROPEAN UNION'S RoHS DIRECTIVE. EACH REEL & BAG IS MARKED WITH THE RoHS LABEL 9100-117-0852-99 OR EQUIVALENT

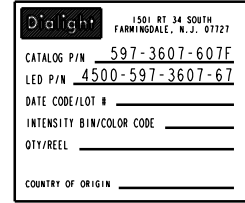
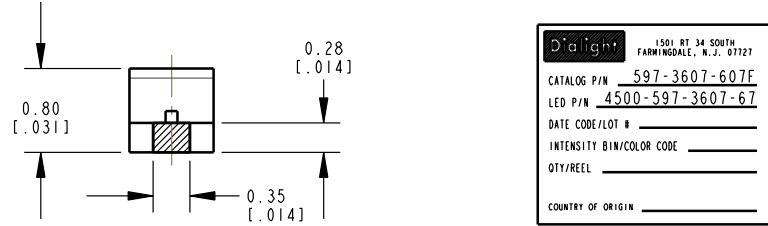
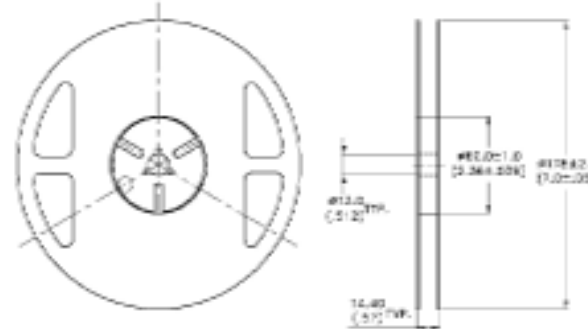
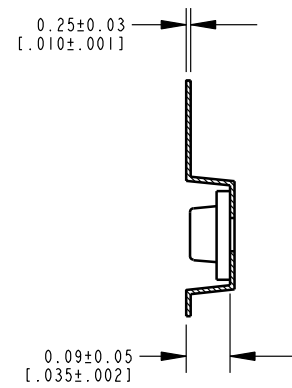
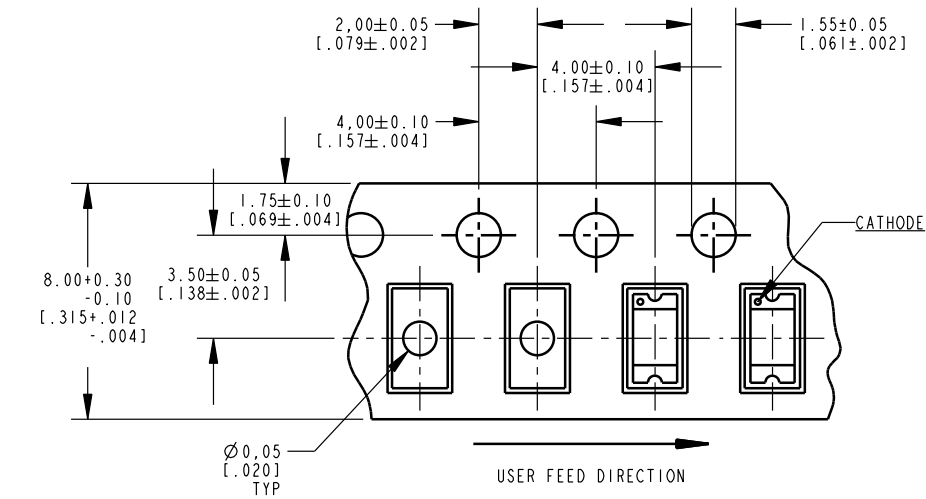
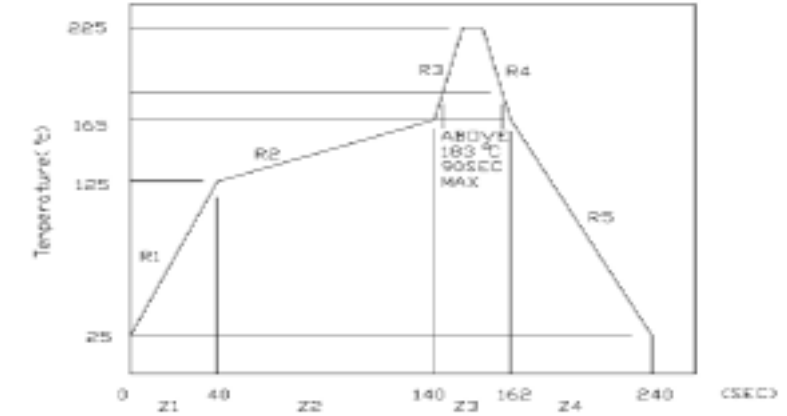


FIGURE (1)

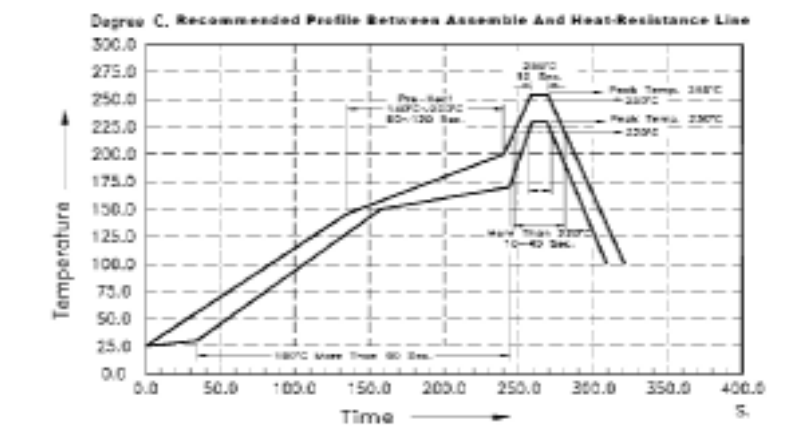


PACKAGE DIMENSIONS OF TAPE AND REEL

(1) Suggestion IR Reflow Profile For Normal Process



(2) Suggestion IR Reflow Profile For Pb Free Process

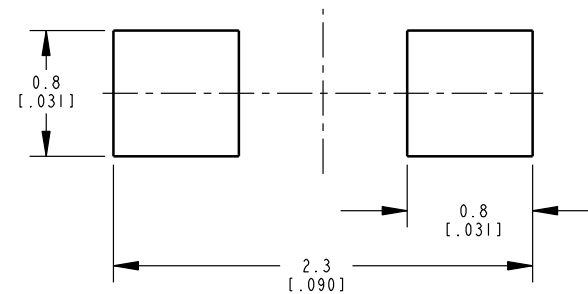


ABSOLUTE MAXIMUM RATINGS AT 25° C AMBIENT

	BLUE	UNITS
POWER DISSIPATION	76	mW
DERATE LINEARLY FROM 50° C	0.25	mA/°C
CONTINUOUS FORWARD CURRENT	20	mA
PEAK FORWARD CURRENT (1/10 DUTY CYCLE, 0.1 ms PULSE WIDTH)	100	mA
REVERSE VOLTAGE	5	V
OPERATING TEMPERATURE	-20 TO +80	°C
STORAGE TEMPERATURE	-30 TO +100	°C
WAVE SOLDERING CONDITION	260° C FOR 5 SEC	
INFRARED SOLDERING CONDITION	260° C FOR 5 SEC	
VAPOR PHASE SOLDERING CONDITION	215° C FOR 3 MIN	

OPERATING CHARACTERISTICS AT 25° C AMBIENT

LED CHARACTERISTICS	MIN.	TYP.	MAX.	UNITS	TEST CONDITIONS
LUMINOUS INTENSITY (I _v)	28.0	60.0	112.0	mcd	I _F = 20 mA
VIEWING ANGLE (2θ 1/2)		130		DEGREES	
PEAK WAVELENGTH (λ _p)		468		nm	MEASUREMENT @ PEAK
DOMINANT WAVELENGTH (λ _d)	465.0		475.0	nm	I _F = 20 mA
SPECTRAL LINE HALF-WIDTH (Δλ)		25		nm	
FORWARD VOLTAGE (V _F)	2.80		3.80	V	I _F = 20 mA
REVERSE CURRENT (I _R)			10	μA	V _R = 5V



ATTENTION:
 OBSERVE PRECAUTIONS FOR
 HANDLING ELECTROSTATIC
 SENSITIVE DEVICES

THIS DRAWING AND THE CONTENTS HEREIN ARE CONFIDENTIAL AND THE SOLE PROPERTY OF DIALIGHT. REPRODUCTION OF THIS DRAWING OR CONSTRUCTION OF ANY PARTS WITHIN THIS DRAWING ARE FORBIDDEN WITHOUT THE WRITTEN CONSENT OF DIALIGHT.		
SCALE: 20:000	DRAWING NUMBER	REV
ALL DIM'S IN: MM (INCHES)	C-17231	A
TOLERANCES: UNLESS OTHERWISE SPECIFIED	TITLE	
FRACTIONS: ±1/64	SMT 0603 InGaN BLUE LED	
DECIMALS (.XX): ±.01	MATERIAL	
DECIMALS (.XXX): ±.005		
DECIMALS (.XXXX): ±.0005		
ANGLES: ±1°		
FINISH:	Dialight	
FSCM 83330	1501 ROUTE 34 SOUTH FARMINGDALE, NJ 07727	
	SHEET 1 OF 1	FAMILY TABLE: