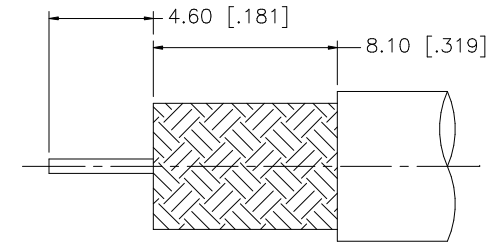
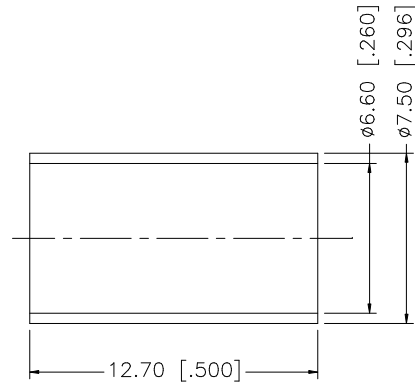
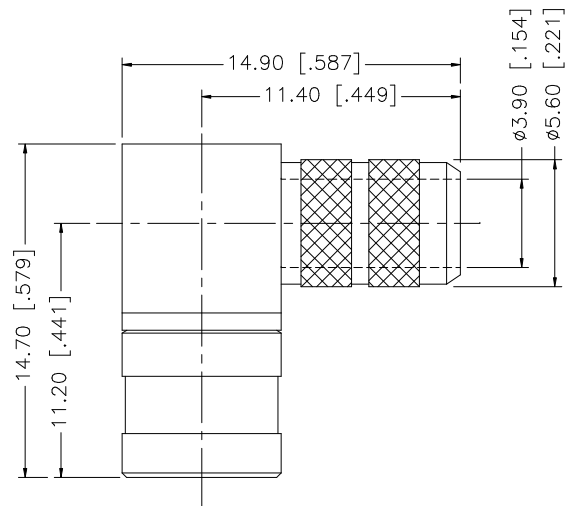
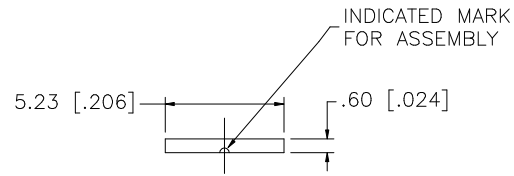


REV.	DATE	DESCRIPTION
NC	01/17/06	INITIAL RELEASE



RECOMMENDED CABLE STRIPPING DIMENSIONS

NOTE:

1. CRIMPED FERRULE  
HEX CRIMP SIZE .255"
2. CONTACT PIN TO SOLDER

				UNLESS OTHERWISE SPECIFIED DIMENSIONS ARE IN MILLIMETERS. DIMENSIONS IN [ ] ARE IN INCHES AND FOR CUSTOMER REFERENCE ONLY.	APPROVALS	DATE	<h1 style="color: blue;">Amphenol Connex</h1>									
8					DRAWN	G.R.S.					01/17/06	<b>MINI 75ohm SMB R/A CRIMP PLUG (FOR RG-59A/U, 59B/U, CABLE)</b>				
7					CHECKED			<b>142336-75</b>								
6					ISSUED							<b>142336-75.DWG</b>				
5	FERRULE	COPPER	GOLD	1	SHEET	1 OF 1		<b>142336-75</b>								
4	COVER	BRASS	GOLD	1								<b>142336-75</b>				
3	CONTACT PIN	BER. COPPER	GOLD	1	CAD FILE			<b>142336-75</b>								
2	INSULATOR	TEFLON	NATURAL	1								<b>142336-75</b>				
1	BODY	BRASS	GOLD	1				<b>142336-75</b>								
	DESCRIPTION	MATERIAL	FINISH	QTY	DO NOT SCALE DRAWING		C:/142/142336-75.DWG					DWG. NO.	142336-75.DWG	REV.	NC	SIZE

UNLESS OTHERWISE SPECIFIED DIMENSIONS ARE IN MILLIMETERS. DIMENSIONS IN [ ] ARE IN INCHES AND FOR CUSTOMER REFERENCE ONLY.

UNLESS OTHERWISE SPECIFIED TOLERANCES FOR MILLIMETERS ARE:  
0.5 - 8mm ± 0.20mm  
8 - 30mm ± 0.40mm  
30 - 120mm ± 0.50mm

UNLESS OTHERWISE SPECIFIED TOLERANCES FOR INCHES ARE:  
.020 - .315 = ± 0.007"  
.315 - 1.180 = ± 0.015"  
1.180 - 4.724 = ± 0.020"