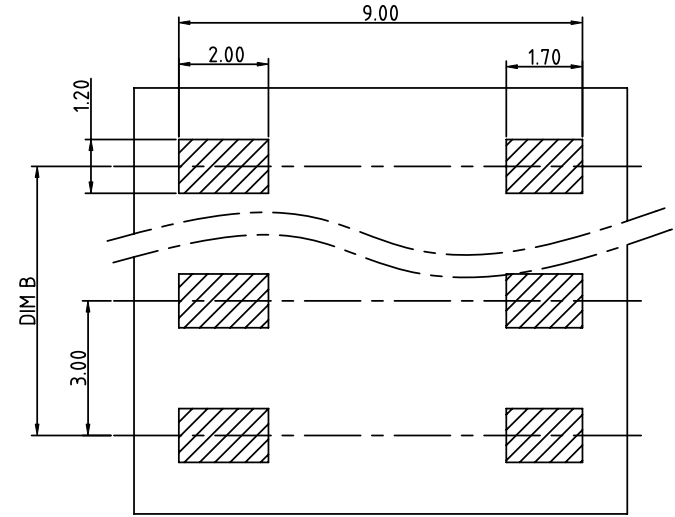
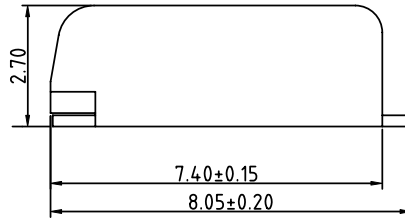
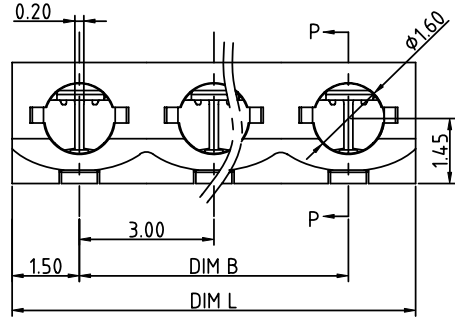
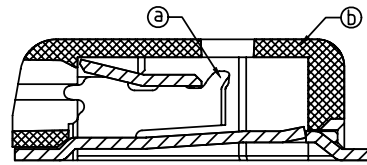


PRODUCT NUMBER	PITCH
NQxx41x000JOG	3.0 mm



RECOMMENDED P.C.B LAYOUT



SECTION P-P

Material

- ItemⒶ: Spring: Copper Alloy, Matte Tin plated over Nickel plated
- ItemⒷ: Body: LCP (UL94V-0)
- Electrical UL(1977)
- Voltage rating: 150V
- Current rating: 3A
- Wire range:
- Solid wire(AWG): 22-26
- Wire strip length: 5-6mm
- Withstanding Voltage: 1.3KV
- Operating temperature: -40°C to +130°C
- Reflow Soldering temperature: 260°C/10 Sec max
- Safety Approval:

N=Number of poles

Dim L	$(N-1) \times 3.0 + 3.0$
Dim B	$(N-1) \times 3.0$

TOLERANCE

POLES	DIM B	DIM L
1P		±0.10
2P	±0.10	±0.15
3P	±0.20	±0.20

PART NO.: NQ xx 4 1 x 0 00J0 G

No. of poles
01 1 pole
02 2 poles
03 3 poles

Color
0 Black (RAL 9005)
1 Natural color
8 Grey (RAL 7044)

RoHS compliant (lead<4%)
In copper Alloy

mat'l. code		surface ASME Y14.5	tolerance ASME Y14.5	projection 	product family TERMINAL BLOCK
ltr	ecn no	dr	date	tolerances unless otherwise specified	title TERMINAL BLOCK
				angles 	scale SPRING CLAMP, SMT TYPE
				X°±1'	scale
		dr	EVIN ZHONG	070815	dwg no
		enr	EVIN ZHONG	070815	sheet 1 of 1
		chr	HANKE FENG	070815	size A4
		appd	SHI JUN	070815	type CUSTOMER Drawing
sheet index	revision	A			
	sheet	1			