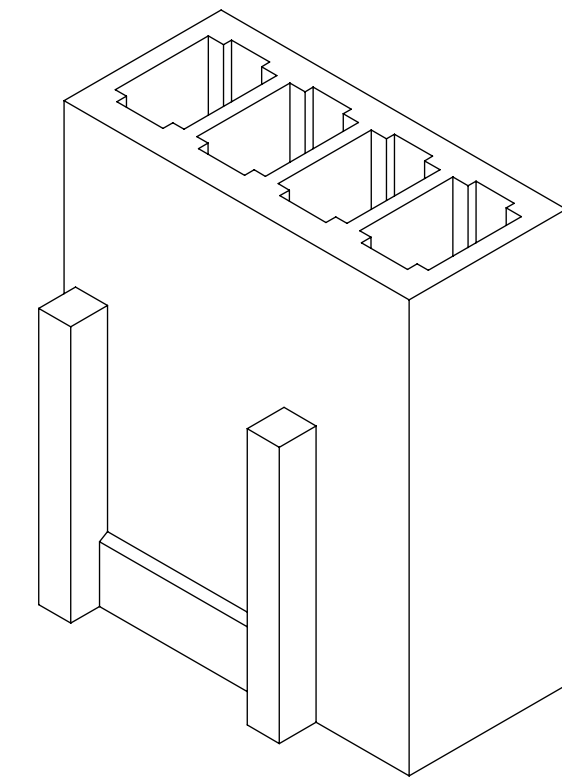
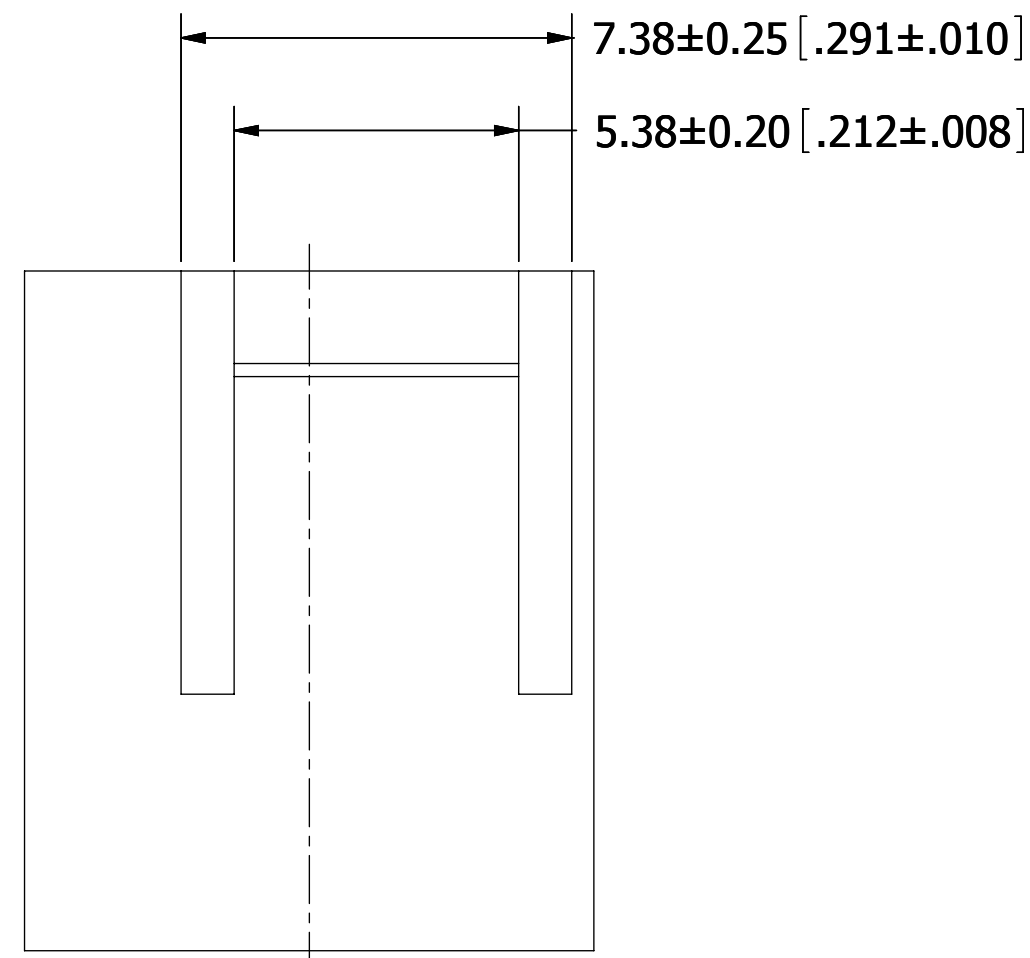
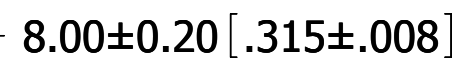
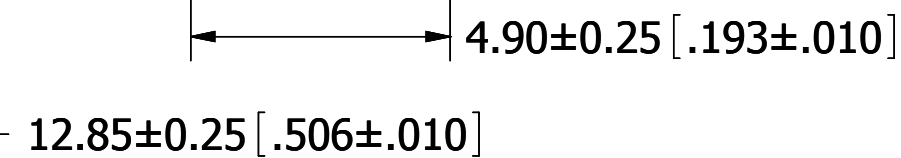
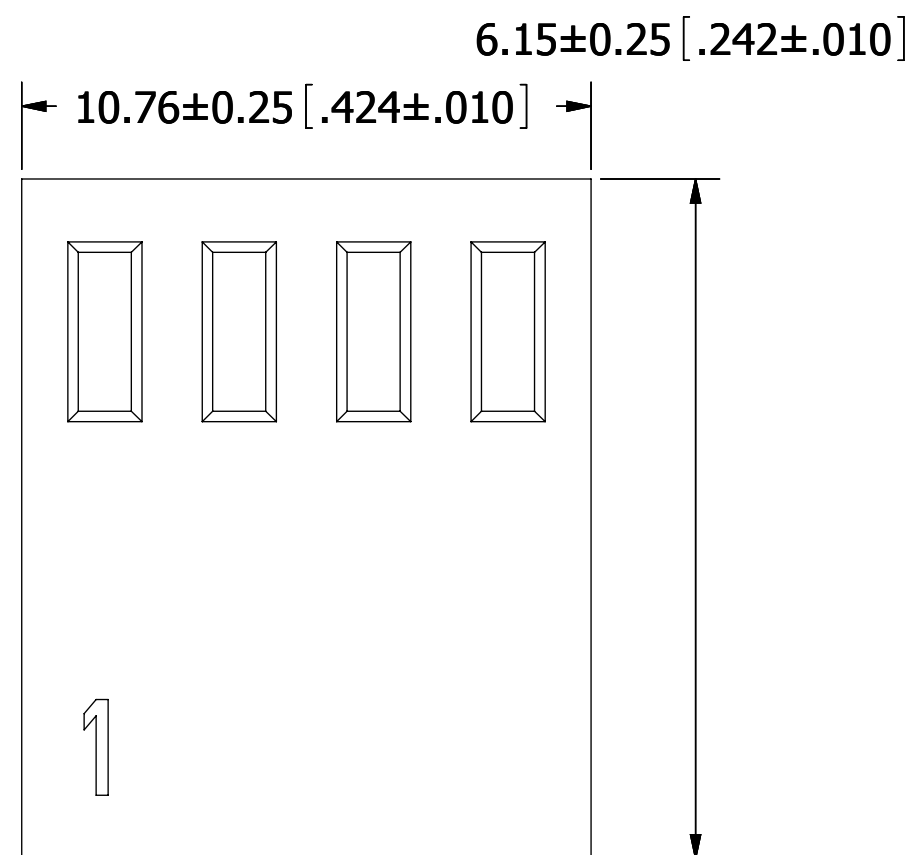
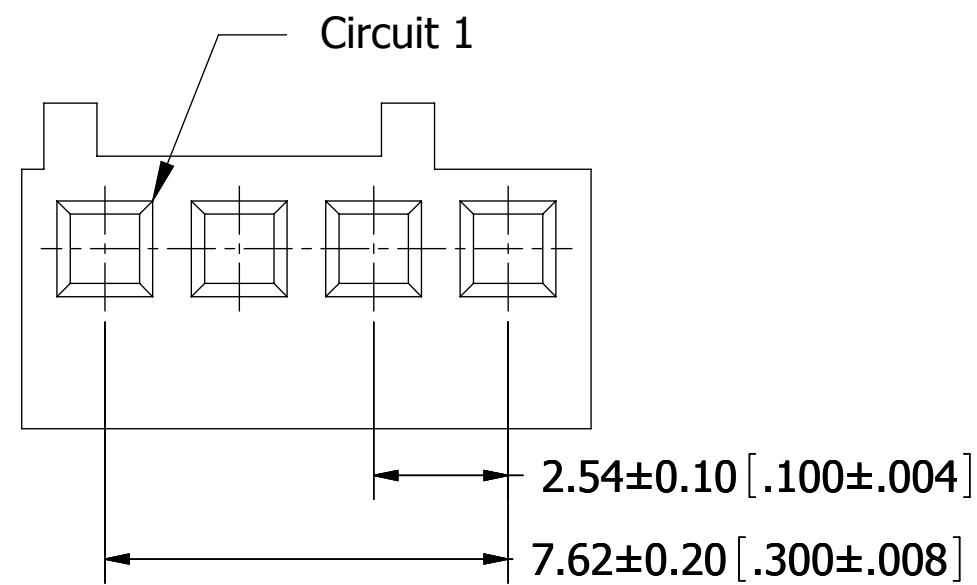


PART NUMBER CODING

SWH25C-NULC-S04-UU-WH

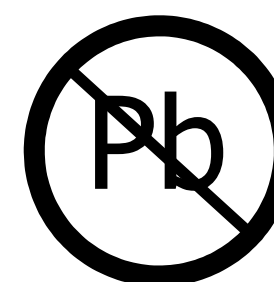
NUMBER OF POSITIONS

(CONTACTS PER ROW)



NOTES:

1. INSULATOR MATERIAL: NYLON66, UL94V-0, COLOR: WHITE.
2. CURRENT RATING: 4 AMPS.
3. VOLTAGE RATING: 250V AC/DC.
4. INSULATOR RESISTANCE: 1000 MEGOHMS MIN.
5. CONTACT RESISTANCE: 10 MILLIOHMS MAX.
6. DIELECTRIC WITHSTANDING VOLTAGE: 1000V AC.
7. OPERATING TEMPERATURE: -25° C TO +85° C.
8. SUITABLE FOR SWT25X SERIES TERMINAL.
9. MATES WITH SWR25C SERIES SINGLE ROW WAFER.



RoHS COMPLIANT

UNLESS OTHERWISE SPECIFIED:
 DIMENSIONS ARE IN MM(INCHES)
 TOLERANCES:
 ANGULAR: ± 5°
 .X= ± .3 [.01]
 .XX= ± .15 [.006]
 .XXX= ± .500 [.0020]
 SURFACE FINISH: 63 R_a
 REMOVE ALL BURRS AND SHARP EDGES .010 MAX

INTERPRET DIMENSIONS AND GEOMETRIC TOLERANCING PER: ANSI Y14.5M-1994

DRAWN	9/17/09	JH
THE INFORMATION HEREIN CONTAINS PROPRIETARY INFORMATION OF SULLINS ELECTRONICS AND IS NOT TO BE REPRODUCED, USED OR DISCLOSED TO OTHERS FOR ANY PURPOSE EXCEPT AS SPECIFICALLY AUTHORIZED IN WRITING BY AN OFFICER OF SULLINS ELECTRONICS.		

DATE		NAME	
9/17/09	JH		
DESCRIPTION			
HOUSING 2.54mm CC, 1 ROW			
PART NUMBER			
SWH25C-NULC-S04-UU-WH			
SIZE	DWG. NO.	REV	
C	11401	A	
SCALE: 7:1			SHEET 1 OF 1