

5

4

3

2

1

DRAWING NO.  
40-9809S-CUST(SEE TABLE I)

REVISIONS

01	OFFICIAL RELEASE				
	02-25-11	J	J	L	M

Description: 98 Series crimp style panel & cable mount  
D-Sub connectors

Part No: 40-9809S

Application: 98 Series D-Sub Connector

Crimp Tool: N/A

Impedance: N/A

Frequency Range: N/A

Material: Shell Steel, Nickel plated  
Insulator PBT+Fiber-grass and nylon-66,  
UL94-V0 Black

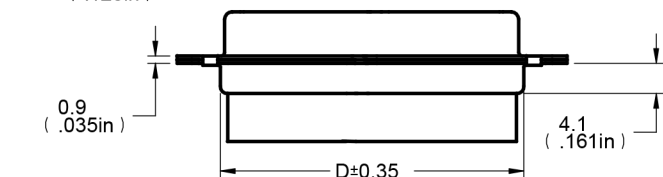
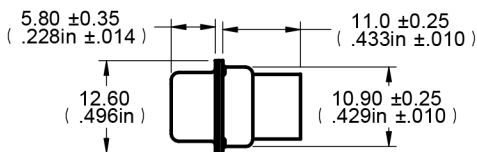
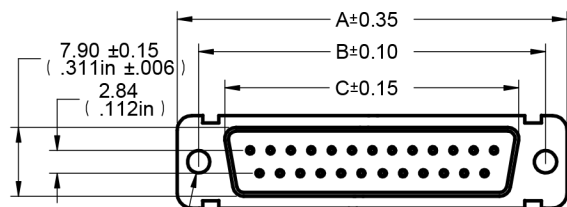
RoHS Compliance: Yes

Technical Detail: N/A



TABLE I

Part Number	Description	A (mm)	B (mm)	C (mm)	D (mm)
40-9809S	FEMALE SOCKET, CRIMP STYLE, 9-PIN	30.80	24.99	16.30	19.20
40-9815S	FEMALE SOCKET, CRIMP STYLE, 15-PIN	39.15	33.32	24.65	27.70
40-9825S	FEMALE SOCKET, CRIMP STYLE, 25-PIN	53.00	47.04	38.40	41.10
40-9837S	FEMALE SOCKET, CRIMP STYLE, 37-PIN	69.30	63.50	54.80	57.30



CUSTOMER COPY

TOLERANCE UNLESS OTHERWISE SPECIFIED	DRAWN BY JEAN.JIN	DATE 02-25-11
DECIMALS mm	CHECKED BY JEAN.JIN	DATE 02-25-11
X ± 0.5	APPROVED BY LIN.MA	DATE 02-25-11
X.X ± 0.3	U/M mm	
X.XX ± 0.2		
ANGLES ± 0.5°		



TITLE  
98 SERIES CRIMP STYLE PANEL & CABLE  
MOUNT D-SUB CONNECTORS

THIS DRAWING WAS PRODUCED BY COMPUTER,  
DO NOT SCALE DRAWING OR UPDATE MANUALLY.

SHEET  
1 OF 1

DRAWING NO.  
40-9809S-CUST  
(SEE TABLE I)

SIZE  
A

5

4

3

2

1

DIM OUTLINE

SOLID EDGE RESISTOR COPY